



## GeoClimate: a Geospatial processing toolbox for environmental and climate studies

Erwan Bocher, Jérémy Bernard, Elisabeth Le Saux Wiederhold, François Leconte, Gwendall Petit, Sylvain Palominos, Camille Noûs

### ► To cite this version:

Erwan Bocher, Jérémy Bernard, Elisabeth Le Saux Wiederhold, François Leconte, Gwendall Petit, et al.. GeoClimate: a Geospatial processing toolbox for environmental and climate studies. Journal of Open Source Software, 2021, 6 (65), pp.3541. 10.21105/joss.03541 . halshs-03359757

**HAL Id: halshs-03359757**

**<https://shs.hal.science/halshs-03359757>**

Submitted on 30 Sep 2021

**HAL** is a multi-disciplinary open access archive for the deposit and dissemination of scientific research documents, whether they are published or not. The documents may come from teaching and research institutions in France or abroad, or from public or private research centers.

L'archive ouverte pluridisciplinaire **HAL**, est destinée au dépôt et à la diffusion de documents scientifiques de niveau recherche, publiés ou non, émanant des établissements d'enseignement et de recherche français ou étrangers, des laboratoires publics ou privés.

# GeoClimate: a Geospatial processing toolbox for environmental and climate studies

Erwan Bocher<sup>\*1</sup>, Jérémy Bernard<sup>3, 1</sup>, Elisabeth Le Saux Wiederhold<sup>2</sup>, François Leconte<sup>4</sup>, Gwendall Petit<sup>1</sup>, Sylvain Palominos<sup>2</sup>, and Camille Noûs<sup>5</sup>

**1** CNRS, Lab-STICC, UMR 6285, Vannes, France **2** Université Bretagne Sud, Lab-STICC, UMR 6285, Vannes, France **3** University of Gothenburg, Department of Earth Sciences, Sweden **4** Université de Lorraine, INRAE, LERMaB, F88000, Epinal, France **5** Laboratoire Cogitamus, <https://www.cogitamus.fr/>

DOI: [10.21105/joss.03541](https://doi.org/10.21105/joss.03541)

## Software

- [Review](#) ↗
- [Repository](#) ↗
- [Archive](#) ↗

Editor: [Jayaram Hariharan](#) ↗

## Reviewers:

- [@abhishekv](#)
- [@omshinde](#)
- [@arbennett](#)

Submitted: 01 July 2021

Published: 29 September 2021

## License

Authors of papers retain copyright and release the work under a Creative Commons Attribution 4.0 International License ([CC BY 4.0](https://creativecommons.org/licenses/by/4.0/)).

## Summary

Human activities induce changes on land use and land cover. These changes are most significant in urban areas where topographic features (e.g., building, road) affect the density of impervious surface areas and introduce a range of urban morphological patterns. Those characteristics impact the energy balance and modify the climate locally (e.g., inducing the so-called Urban Heat Island phenomenon).

Therefore, there is a need for georeferenced morphological indicators as well as urban classifications (such as Local Climate Zones) that can be directly used for planning or as inputs of climate models. GeoClimate is dedicated to this purpose: it converts raw geographical data (OpenStreetMap and French BDTopo) into indicators useful for climate applications (sky view factor, vegetation fraction, etc.) However, its application is not limited to the climate field. The indicators calculated in GeoClimate can also be used for other diagnostic or planning purposes: studying the territory fragmentation, the influence of the urban fabric on pollution (noise or air chemical transport), the energy consumption, etc. GeoClimate is available as free and open source geospatial software.

## Statement of need

Urban spatial properties are useful to study the urban climate: (i) basic parameters such as building fraction or building height are needed as input of parametric urban climate models such as the Town Energy Balance (TEB)<sup>1</sup> ([Masson, 2000](#)), (ii) more sophisticated parameters are clearly correlated to urban climate observations<sup>2</sup>, and (iii) local climate classifications, useful for international comparisons, are mostly defined from urban spatial properties ([Stewart & Oke, 2012](#)). Thus there is a need for tools dedicated to the calculation of urban spatial metrics.

In previous research, scripts were developed to automatically calculate numerous indicators useful for urban climate applications ([Bocher et al., 2018](#)). These scripts have been organized,

---

<sup>\*</sup>corresponding author

<sup>1</sup><https://github.com/teb-model/teb>

<sup>2</sup>A few examples: (i) the lower the sky view factor, the higher solar radiation trapped by the urban canopy ([Bernabé et al., 2015](#)), the higher the urban air temperature ([Lindberg, 2007](#)), the lower the wind speed ([Johansson et al., 2016](#)); (ii) the higher the density of projected building facade in a given direction, the lower the wind speed within the urban canopy ([Hanna & Britter, 2002](#)).

improved, and implemented within a Groovy library called GeoClimate. New urban properties and classification algorithms have been added. GeoClimate also simplifies access to geospatial data since it automatically downloads and organizes data from the worldwide OpenStreetMap database<sup>3</sup>. One of the current major limitations for the climate community to use this data is its lack of building height information (Masson et al., 2020). Thus we have also added an algorithm to roughly estimate the height of each building missing this information.

This tool is first dedicated to urban climate researchers for modeling purposes: the output of GeoClimate can be directly used by urban climate models or by simple empirical models (Bernard et al., 2017). It is also useful for any investigation dealing with urban climate issues (the calculation of the Local Climate Zone is, for example, of major interest as metadata for any urban climate study). The indicators calculated by GeoClimate can also be used for territory diagnostic and planning purpose for any spatial related question (climate, energy, biodiversity, pollution, socio-economy, etc.)

## State of the field and features comparison

There is currently no software specifically designed for the calculation of geospatial indicators dedicated to urban climate. However, two software packages can currently be used to automatically perform some of the GeoClimate's features:

- Urban Multi-Scale Environment Predictor (Lindberg et al., 2019), available as a plugin in the free and open-source QGIS software, can be used for a variety of applications related to outdoor thermal comfort, urban energy consumption, climate change mitigation (Lindberg et al., 2018)
- Local Climate Zone Generator (LCZ Generator<sup>4</sup>), available as an online tool, produces the LCZ classification of a given area (Demuzere et al., 2021).

Table 1 shows the features covered by GeoClimate and for each feature the differences with UMEP and LCZ Generator.

Geoclimate features	Differences with UMEP	Differences with LCZ Generator
Import data from world-wide database (OSM) as GIS layers: buildings, roads, railways, water, vegetation, impervious	Only the building layer footprint and height are retrieved	Not performed
Estimate the height of building when missing	Building height is left to <i>Not a Number</i> when missing	Not performed
Calculate building indicators	Not performed	Not performed
Calculate block indicators	Not performed	Not performed
Calculate indicators at two Reference Spatial Unit (RSU) scales: (i) Topographical Spatial Unit (TSU) (vector format) (ii) Rectangular based grid scale (raster format)	(i) Only few indicators are calculated (ii) Calculations and results are available only at raster scale	Not performed

<sup>3</sup><https://www.openstreetmap.org>

<sup>4</sup><https://lcz-generator.rub.de/>

Geoclimate features	Differences with UMEP	Differences with LCZ Generator
Classify the urban fabric to LCZ	Not performed	(i) Need a training area generated by the user (ii) Only available as raster image format
Classify the buildings to Urban Typology by Random Forest (UTRF)	Not performed	Not performed

Table 1: GeoClimate features description and differences with similar commonly-used tools

## Processing steps

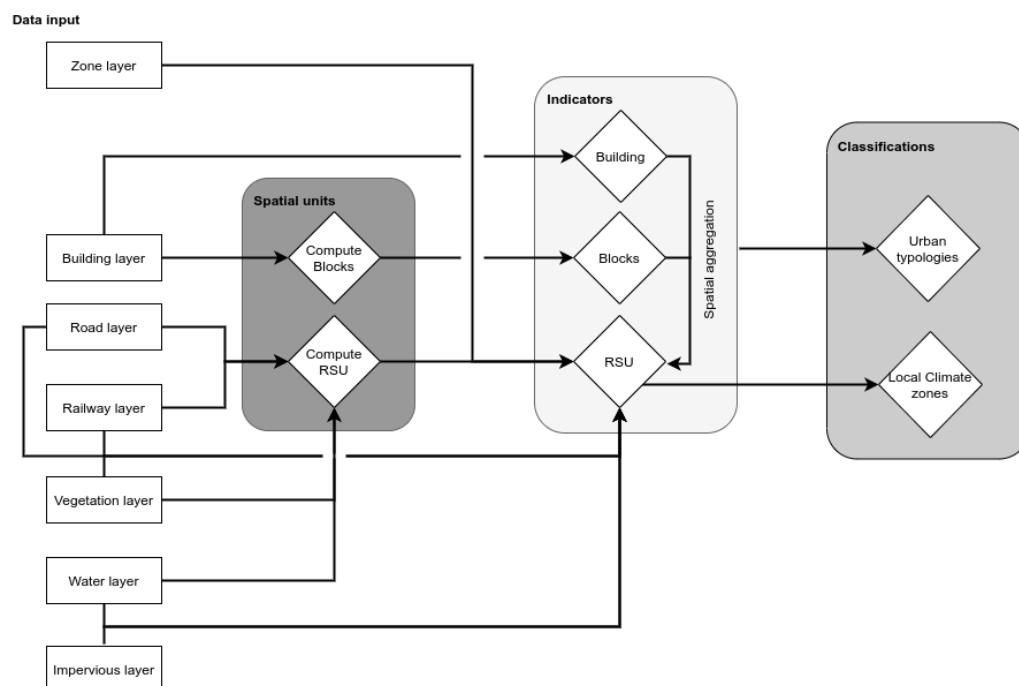
GeoClimate performs indicator computation at three spatial unit scales, a spatial unit being a POLYGON or MULTIPOLYGON geometry:

1. Building scale, defined as a collection of features represented by 2D geometries with attributes as measures for walls and roofs.
2. Block scale, defined as the union of the geometries of buildings touching each other (at least one point in common). Note that an isolated building is then also considered as a block.
3. Reference Spatial Unit (RSU) scale, being the elementary unit to characterize all the characteristics of a piece of land. The RSU is calculated according to several geographic information elements that describe the territory and could have an impact on the urban climate: the road and rail network as well as the vegetation area and water surfaces (when they are sufficiently large to be considered as climatically important – default values are respectively 100,000 m<sup>2</sup> and 2,500 m<sup>2</sup>).

The indicators in GeoClimate are calculated from vector GIS layers that represent the main topographic features: zone layer, building layer, road layer, railway layer, vegetation layer, water layer, and impervious layer (depending on the use of GeoClimate, only some of the inputs may be needed). To guarantee the use of the algorithms and their outputs, the GIS layers must follow a set of specifications. These specifications are defined for each layer. They include, notably, the name and the datatype of the columns, the values used by the attributes, and the dimension of the geometry.

GeoClimate output data consists of both a set of indicators and classifications. GeoClimate uses the concept of a Workflow to chain a set of spatial analysis and statistical processes. The Workflow is organized in 3 steps (Figure 1). Each step or each process within a step can be run individually. A Workflow can be used even if not all input data are provided: partitioning and indicators calculations will then be limited to the supplied data.





**Figure 1:** Main GeoClimate processing steps.

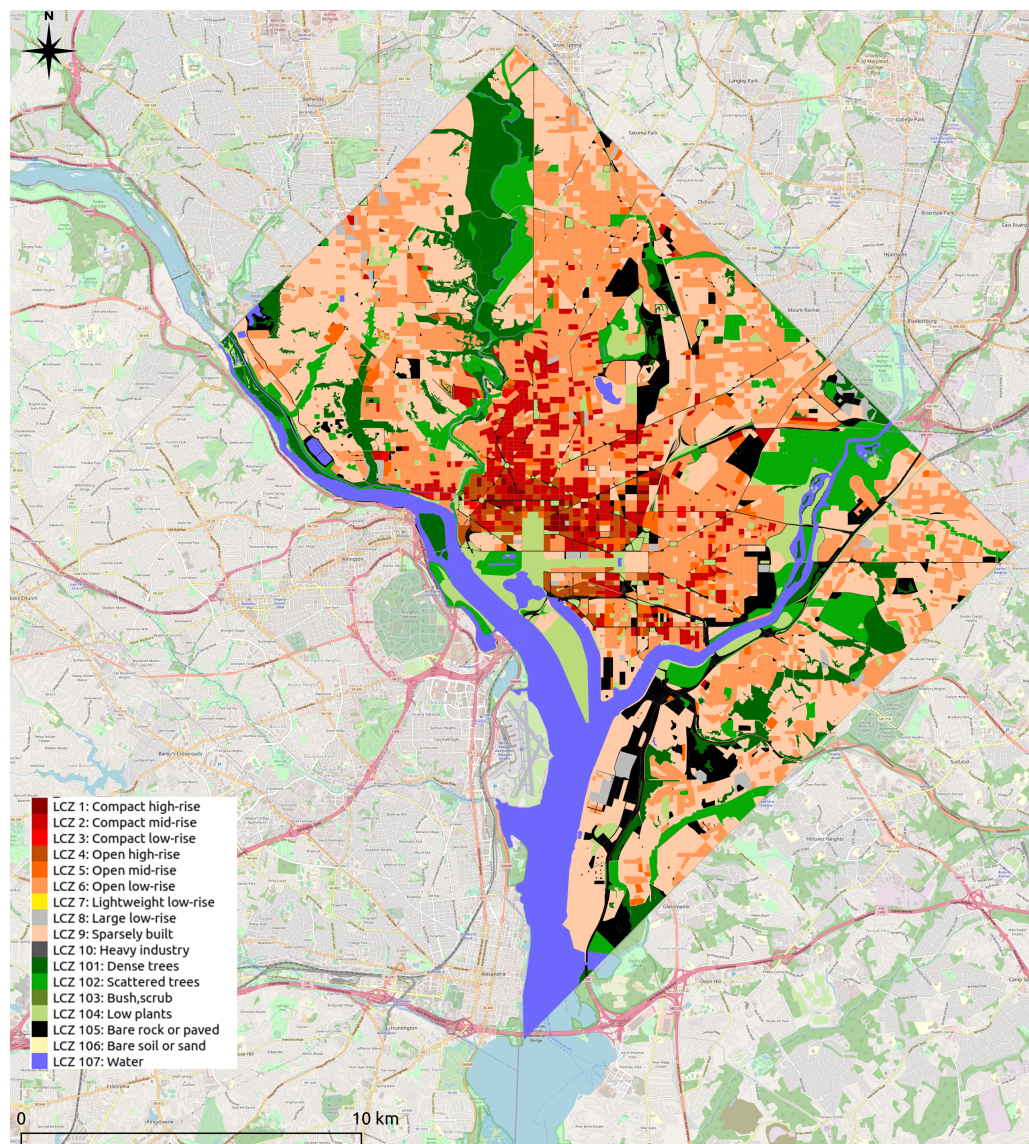
The first step of the GeoClimate chain concerns the construction of two new spatial units: block and RSU. In the default case described here, Topographical Spatial Units (TSU) are used as RSU. They are defined as a continuous and homogeneous way to divide the space using topographic constraints based on road and railway center lines, vegetation and water surface boundaries, and administrative boundaries. Only 2D is considered for partitioning, therefore underground elements (such as tunnels) and overground elements (such as bridges) are excluded from the input. Water and vegetation surfaces are also not considered for partitioning when they are smaller than a certain threshold, set by default to 2,500 m<sup>2</sup> for water and 10,000 m<sup>2</sup> for vegetation.

The second step is the calculation of spatial indicators. GeoClimate indicators are used to measure morphological properties (e.g., the form factor) and describe spatial organizations (e.g., distance measurements, patch metrics, shape index, spatial density). They quantify the shape and pattern of urban and landscape structures. The spatial indicators are computed at three scales: building, block, and RSU. Buildings are characterized by their location in a geographical space (e.g., distance to the nearest road, average distance to other buildings, number of building neighbors). Building and blocks are characterized by morphological indicators (e.g., a form factor), RSU are characterized by fractions of land type (e.g., vegetation, water, impervious fractions) and specific climate-oriented indicators (e.g., aspect ratio, mean sky view factor). Some of the building indicators are also aggregated at block scale (e.g., mean block height) and some of the building and block indicators are aggregated at RSU scale (e.g., mean number of neighbors per building, mean building height). In the end, more than 100 indicators are calculated<sup>5</sup>.

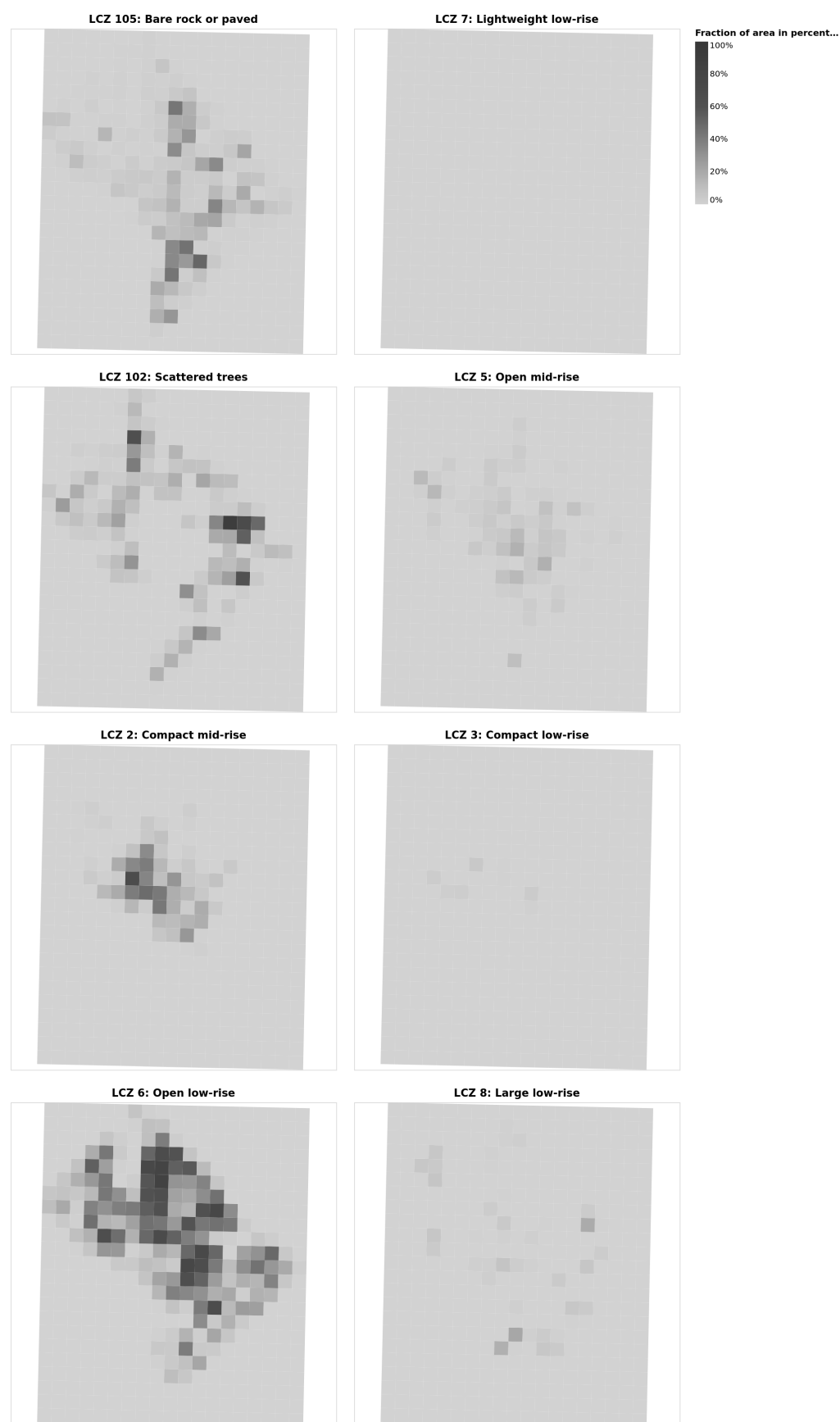
At the third step, classifications use the spatial indicators at the three scales and specific statistical models / algorithms to calculate Urban Typology by Random Forest (UTRF) (Bocher et al., 2018) and LCZ at RSU scale.

<sup>5</sup>For further details about the available indicators and their calculation, please refer to the online documentation, since the number of indicators will probably increase in new GeoClimate versions: <https://github.com/orbisgis/geoclimate/wiki/Output-data>

The indicators can also be calculated for each cell of a rectangular grid and the result of the classification at TSU scale can be rasterized according to the same grid (Figure 2 and Figure 3).



**Figure 2:** Local Climate zones classified at the TSU scale.



**Figure 3:** Rasterization of the LCZ classification on a regular grid.

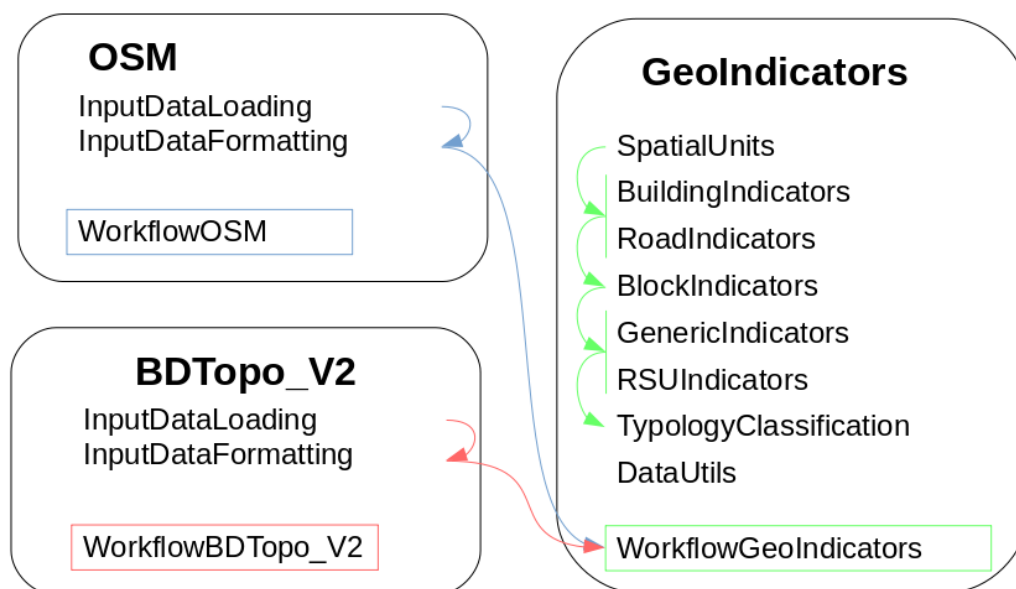
## Coding implementation

GeoClimate algorithms are implemented as functions in Groovy scripts. GeoClimate is organized in 3 modules: GeoIndicators, OSM, and BDTopo\_V2 (Figure 4).

GeoIndicators is the main module. It contains all the algorithms to build the units of analysis, compute the corresponding indicators, and classify urban fabric by type. The SpatialUnits script creates the units of analysis (currently blocks and TSU). The BuildingIndicators, BlockIndicators, RoadIndicators, and RSUIndicators scripts calculate morphological and topographical indicators respectively at building, block, road, and RSU scales. The GenericIndicators script calculates indicators that can be applied to any scale (e.g., the area of a unit - building, block, RSU - or the aggregation of indicators from one scale to another - mean building height within a block or a RSU). The TypologyClassification script classifies units to a certain type (currently building to UTRF and TSU to LCZ) based on indicators' values. The DataUtil script facilitates data handling (e.g., join several tables). All functions contained in the previous scripts may be called individually. To run several of them in a row, workflows are available in the WorkflowGeoIndicators script. The main one performs all the analysis (green arrows on Figure 4): it produces the units of analysis, computes the indicators at the base scales (building and road), computes indicators at block scale, aggregates indicators from lower to upper scales, computes indicators at RSU scale, and then classifies urban fabric.

The OSM module extracts and transforms the OSM data to the GeoClimate abstract model. Those data processes are specified in the InputDataLoading and InputDataFormatting scripts. The WorkflowOSM script chains algorithms (blue arrow Figure 4): it triggers the two scripts dedicated to the OSM data preparation and then the WorkflowGeoIndicators script. It is the main entry to specify the area to be processed, the indicators, and the classifications to compute.

The BDTopo\_V2 module follows the same logic as the OSM module, except that it is dedicated to version 2.2 of the French IGN BDTopo database<sup>6</sup>.



**Figure 4:** The GeoClimate modules.

<sup>6</sup><https://ign.fr/>

## A minimal example

GeoClimate can be executed directly in a command prompt or using the Groovy Console. In the following example, the GeoClimate OpenStreetMap chain is used through the command prompt to calculate TEB inputs, LCZ, and UTRF classification for Washington DC taken as an area of interest.

After downloading the archive GeoClimate.jar and opening a command prompt in the same directory, the script can be called as:

```
java -jar GeoClimate.jar -f configuration_file.json -w OSM
```

The `f` option is used to set the path of the configuration file and the `w` option to specify the workflow type (OSM or BDTopo\_V2).

The configuration file sets the main parameters of the calculation, e.g.:

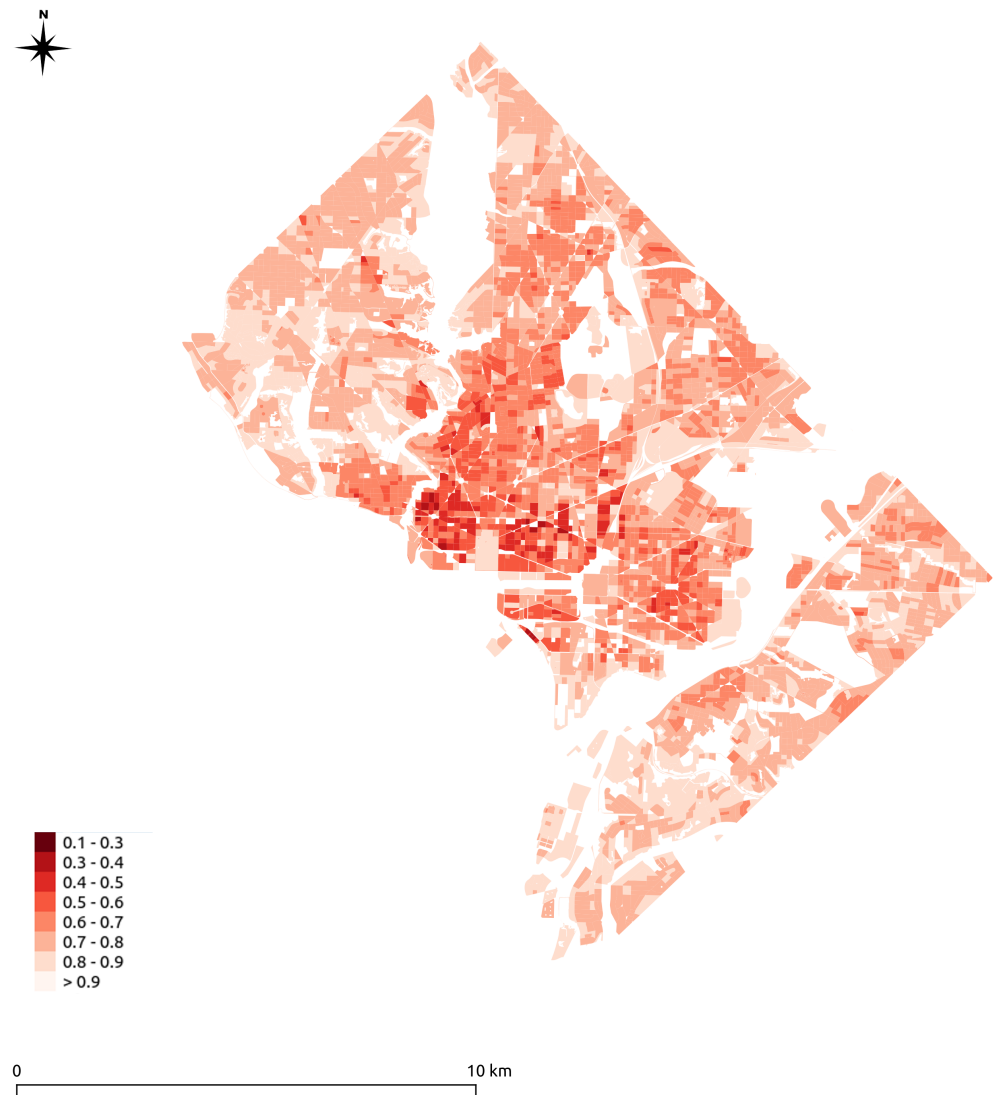
```
{
  "description": "Processing OSM data for the Washington DC area",
  "input": {
    "osm": [
      "Washington DC"
    ]
  },
  "output": {
    "folder": "/tmp"
  },
  "parameters": {
    "rsu_indicators": {
      "indicatorUse": [
        "LCZ",
        "TEB",
        "UTRF"
      ],
      "svfSimplified": true,
      "estimateHeight": true
    },
    "grid_indicators": {
      "x_size": 1000,
      "y_size": 1000,
      "indicators" :[
        "BUILDING_FRACTION",
        "BUILDING_HEIGHT",
        "WATER_FRACTION",
        "VEGETATION_FRACTION",
        "ROAD_FRACTION",
        "IMPERVIOUS_FRACTION",
        "LCZ_FRACTION"
      ]
    }
  }
}
```

The configuration file is structured in four main parts.

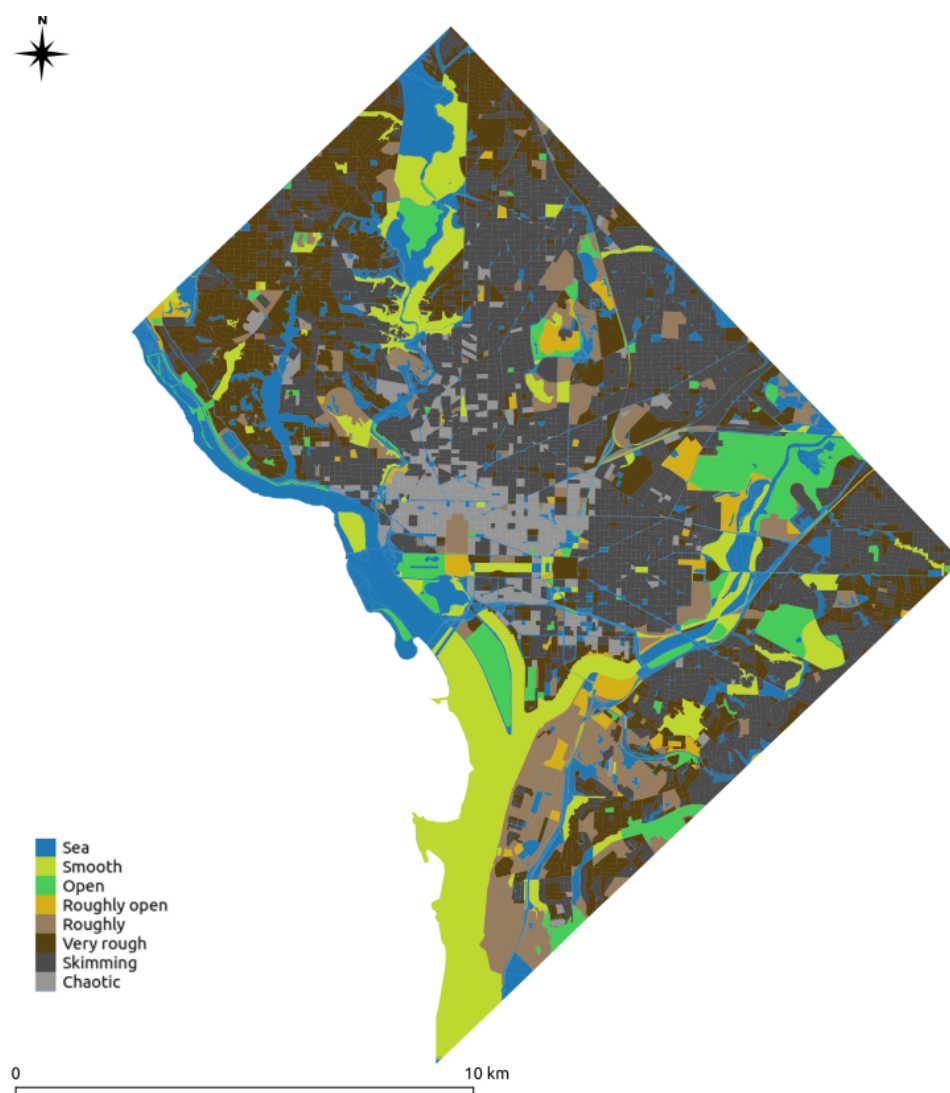


- “description” is text that describes the process.
- “input” specifies the input data. In this example, the OpenStreetMap chain is run for Washington DC.
- “output” specifies the expected format (here “folder”) and path (here “/tmp”).
- “parameters” specifies the calculated parameters based on reference spatial units (“rsu\_indicators”) and then rasterized using a grid (“grid\_indicators”).
  - At RSU scale, the LCZ, the TEB inputs, and the UTRF are calculated (“indicatorUse”: [“LCZ,”“TEB,”“UTRF”]). A simplified method is used to calculate the sky view factor (“svfSimplified”: true) and the method to estimate the height of buildings in OSM (“estimateHeight” : true).
  - With the grid approach, the grid dimensions in meters are specified (“x\_size” and “y\_size”). Then, output indicators are calculated for each cell of the grid (“BUILDING\_FRACTION,” “BUILDING\_HEIGHT,” “WATER\_FRACTION,” “VEGETATION\_FRACTION,” “ROAD\_FRACTION,” “IMPERVIOUS\_FRACTION,”“LCZ\_FRACTION”).

The following maps ([Figure 5](#), [Figure 6](#), [Figure 7](#), [Figure 8](#)) illustrate some result indicators computed at the TSU scale and aggregated on a regular grid.

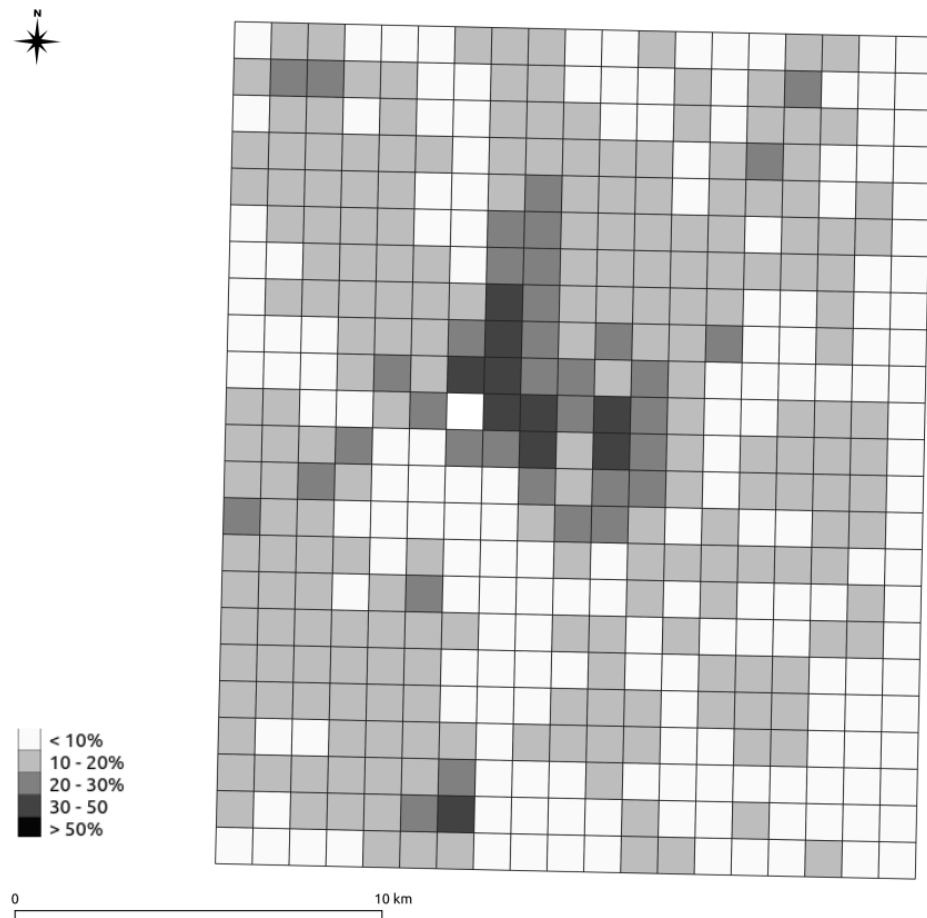


**Figure 5:** Sky view factor values by TSU.

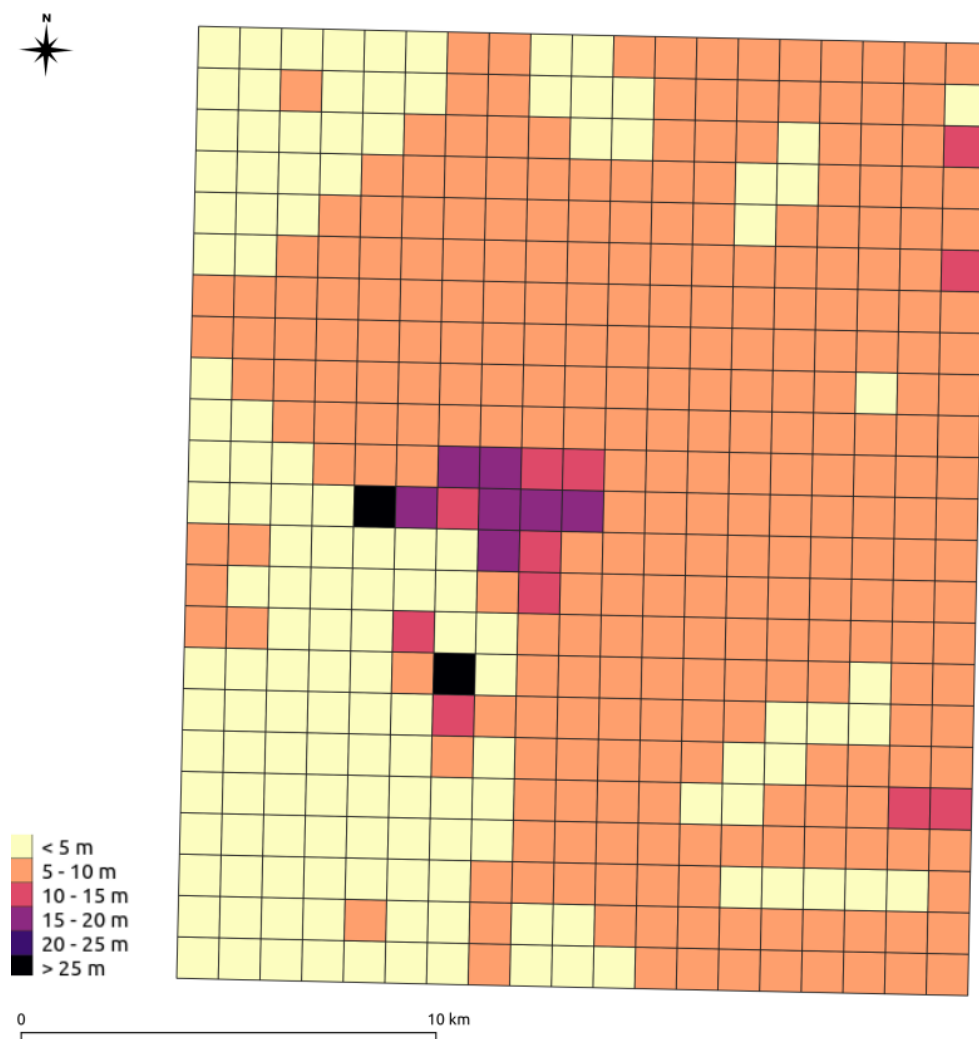


**Figure 6:** Terrain roughness class values by TSU.





**Figure 7:** Building density on a 1X1 km2 regular grid.



**Figure 8:** Building height average on a 1X1 km<sup>2</sup> regular grid.

## Research projects involving GeoClimate

The GeoClimate library has been originally developed within the following research projects:

- URCLIM (2017-2021), part of ERA4CS, a project initiated by JPI Climate and co-funded by the European Union under grant agreement No 690462
- PAENDORA (2017-2021), funded by ADEME
- SLIM (2020-2021), a Copernicus project C3S\_432 Provisions to Environmental Forecasting Applications (Lot 2)

## References

- Bernabé, A., Bernard, J., Musy, M., Andrieu, H., Bocher, E., Calmet, I., Kéravec, P., & Rosant, J.-M. (2015). Radiative and heat storage properties of the urban fabric derived from analysis of surface forms. *Urban Climate*, 12, 205–218. <https://doi.org/10.1016/j.uclim.2015.04.001>

- Bernard, J., Musy, M., Calmet, I., Bocher, E., & Keravec, P. (2017). Urban heat island temporal and spatial variations: Empirical modeling from geographical and meteorological data. *Building and Environment*, 125, 423–438. <https://doi.org/10.1016/j.buildenv.2017.08.009>
- Bocher, E., Petit, G., Bernard, J., & Palominos, S. (2018). A geoprocessing framework to compute urban indicators: The MApUCE tools chain. *Urban Climate*, 24, 153–174. <https://doi.org/10.1016/j.uclim.2018.01.008>
- Demuzere, M., Kittner, J., & Bechtel, B. (2021). LCZ Generator: A Web Application to Create Local Climate Zone Maps. *Frontiers in Environmental Science*, 9, 637455. <https://doi.org/10.3389/fenvs.2021.637455>
- Hanna, S. R., & Britter, R. E. (2002). *Wind flow and vapor cloud dispersion at industrial and urban sites* (A. I. of Chemical Engineers, Ed.). ISBN: 978-0-816-90863-9
- Johansson, L., Onomura, S., Lindberg, F., & Seaquist, J. (2016). Towards the modelling of pedestrian wind speed using high-resolution digital surface models and statistical methods. *Theoretical and Applied Climatology*, 124, 189–203. <https://doi.org/10.1007/s00704-015-1405-2>
- Lindberg, F. (2007). Modelling the urban climate using a local governmental geo-database. *Meteorological Applications*, 14(3), 263–273. <https://doi.org/10.1002/met.29>
- Lindberg, F., Grimmond, C. S. B., Gabey, A., Huang, B., Kent, C. W., Sun, T., Theeuwes, N. E., Järvi, L., Ward, H. C., Capel-Timms, I., Chang, Y., Jonsson, P., Krave, N., Liu, D., Meyer, D., Olofson, K. F. G., Tan, J., Wästberg, D., Xue, L., & Zhang, Z. (2018). Urban Multi-scale Environmental Predictor (UMEP): An integrated tool for city-based climate services. *Environmental Modelling & Software*, 99, 70–87. <https://doi.org/10.1016/j.envsoft.2017.09.020>
- Lindberg, F., Grimmond, C. S. B., Gabey, A., Jarvi, L., Kent, C. W., Krave, N., Sun, T., Wallenberg, N., & Ward, H. C. (2019). *Urban multi-scale environmental predictor (UMEP) manual*. University of Reading UK, University of Gothenburg Sweden, SIMS China. <https://umep-docs.readthedocs.io/>
- Masson, V. (2000). A Physically-Based Scheme For The Urban Energy Budget In Atmospheric Models. *Boundary-Layer Meteorology*, 94(3), 357–397. <https://doi.org/10.1023/A:1002463829265>
- Masson, V., Heldens, W., Bocher, E., Bonhomme, M., Bucher, B., Burmeister, C., Munck, C. de, Esch, T., Hidalgo, J., Kanani-Sühring, F., Kwok, Y.-T., Lemonsu, A., Lévy, J.-P., Maronga, B., Pavlik, D., Petit, G., See, L., Schoetter, R., Tornay, N., ... Zeidler, J. (2020). City-descriptive input data for urban climate models: Model requirements, data sources and challenges. *Urban Climate*, 31, 100536. <https://doi.org/10.1016/j.uclim.2019.100536>
- Stewart, I. D., & Oke, T. R. (2012). Local Climate Zones for Urban Temperature Studies. *Bulletin of the American Meteorological Society*, 93(12), 1879–1900. <https://doi.org/10.1175/BAMS-D-11-00019.1>