



HAL
open science

Unaccountable counting: the folly of incorporating open ocean carbon sinks in Nationally Determined Contributions

Manon Berger, Adrien Comte, Lester Kwiatkowski, Laurent Bopp

► **To cite this version:**

Manon Berger, Adrien Comte, Lester Kwiatkowski, Laurent Bopp. Unaccountable counting: the folly of incorporating open ocean carbon sinks in Nationally Determined Contributions. *Comptes Rendus. Géoscience*, 2024, 356 (G1), pp.123-137. 10.5802/crgeos.271 . hal-04764071

HAL Id: hal-04764071

<https://hal.univ-brest.fr/hal-04764071v1>

Submitted on 4 Nov 2024

HAL is a multi-disciplinary open access archive for the deposit and dissemination of scientific research documents, whether they are published or not. The documents may come from teaching and research institutions in France or abroad, or from public or private research centers.

L'archive ouverte pluridisciplinaire **HAL**, est destinée au dépôt et à la diffusion de documents scientifiques de niveau recherche, publiés ou non, émanant des établissements d'enseignement et de recherche français ou étrangers, des laboratoires publics ou privés.



Distributed under a Creative Commons Attribution - NonCommercial - NoDerivatives 4.0 International License



ACADÉMIE
DES SCIENCES
INSTITUT DE FRANCE

Comptes Rendus

Géoscience

Sciences de la Planète


Manon Berger, Adrien Comte, Lester Kwiatkowski and Laurent Bopp

Unaccountable counting: the folly of incorporating open ocean carbon sinks in Nationally Determined Contributions

Volume 356 (2024), p. 123-137

Online since: 19 August 2024

<https://doi.org/10.5802/crgeos.271>

 This article is licensed under the
CREATIVE COMMONS ATTRIBUTION 4.0 INTERNATIONAL LICENSE.
<http://creativecommons.org/licenses/by/4.0/>



*The Comptes Rendus. Géoscience — Sciences de la Planète are a member of the
Mersenne Center for open scientific publishing*
www.centre-mersenne.org — e-ISSN : 1778-7025



Research article

Unaccountable counting: the folly of incorporating open ocean carbon sinks in Nationally Determined Contributions

Manon Berger ^{*,a}, Adrien Comte ^{®,b}, Lester Kwiatkowski ^{®,c} and Laurent Bopp ^{®,a}

^a LMD/IPSL, ENS, PSL University, École Polytechnique, Institut Polytechnique de Paris, Sorbonne Université, CNRS, Paris, France

^b IRD, Univ Brest, CNRS, Ifremer, LEMAR, Plouzané, France

^c LOCEAN/IPSL, Sorbonne Université, CNRS, IRD, MNHN, Paris, France

E-mail: manon.berger@lmd.ipsl.fr (M. Berger)

Abstract. The national climate action plans to cut greenhouse gas emissions, referred to as Nationally Determined Contributions (NDCs), currently include anthropogenic land-based carbon fluxes but typically exclude open ocean carbon sinks within Exclusive Economic Zones (EEZs). Here, we utilise a high-resolution global ocean biogeochemical model alongside available observations to illustrate why including EEZ carbon sinks in NDCs would be both conceptually and practically highly problematic.

To demonstrate this, we focus on the case of the French EEZ, where we simulate an anthropogenic carbon sink of $0.21 \text{ GtCO}_2\text{-yr}^{-1}$ over the past decade, representing nearly 50% of France's territorial greenhouse gas emissions over the same period. However, it should be noted that this anthropogenic carbon uptake results from the physical and biogeochemical properties of water masses, rather than from human management practices. Additionally, the EEZ oceanic carbon sink is already considered in estimates of remaining carbon budgets to meet the goals of the Paris Agreement. Therefore, integrating these fluxes into NDCs would lead to inconsistency between national objectives and global climate goals.

We argue that to identify the additionality of management measures aimed at enhancing the anthropogenic carbon sink in EEZ waters, robust assessments of the baseline carbon sink and how it would have evolved without intervention will be needed. As we show, this is complicated by the spatially and temporally dynamic nature of ocean carbon fluxes. More fundamentally, there is no colocalization between air-sea fluxes and the subsequent sequestration of carbon in the ocean due to circulation and mixing. Consequently, the measurement, reporting, and verification requirements for national stocktakes would be highly challenging. Moreover, as fluxes predominantly occur in the high latitude oceans and sequestration in the subtropics, the national allocation of credits would involve contentious issues of equity and justice.

Keywords. Ocean carbon sink, Nationally Determined Contributions, Exclusive Economic Zones, Climate change, Mitigation.

Manuscript received 29 March 2024, revised 10 July 2024, accepted 11 July 2024.

1. Introduction

Under the Paris Agreement, global efforts to address climate change and achieve climate goals have led

nations to explore various strategies to reduce carbon emissions and enhance carbon sinks. The Global Stocktake evaluates progress towards the goals of the Paris Agreement, including mitigation, adaptation, and means of implementation and support. This assessment aims to determine the effectiveness

*Corresponding author

of existing climate policies, identify gaps in climate action and support, and accelerate efforts to combat climate change. As part of this effort, Nationally Determined Contributions (NDCs) have become an important framework for countries to outline their commitments to limit global warming. While terrestrial ecosystems have traditionally been the focus of carbon sink accounting and carbon removal initiatives [Powis *et al.*, 2023], the role of oceanic ecosystems has gained attention [Pendleton *et al.*, 2012].

To date, the only ocean-related pathways that are included as a mitigation strategy in NDCs are those mediated by blue carbon (mangroves, seagrasses, and salt marshes) or other carbon-rich ecosystems such as kelp forests [Lecerf *et al.*, 2021]. These ecosystems are recognized for their critical role in carbon sequestration and other ecosystem services, acting as natural buffers against storms and erosion, and providing essential habitats for marine biodiversity [Barbier *et al.*, 2011, Friess *et al.*, 2020]. Conservation and restoration of blue carbon ecosystems is emerging not only as a climate change mitigation strategy, but also as an adaptation tool for biodiversity conservation and the well-being of marine and human communities. Nevertheless, the global-scale mitigation potential of blue carbon ecosystems is limited, likely amounting to less than 2% of current CO₂ emissions [Bindoff *et al.*, 2019], primarily due to the restricted surface area available for the growth of these ecosystems.

In contrast, nations' Exclusive Economic Zones (EEZs) are vast, covering 41% of the Earth's ocean surface, and potentially representing a significant portion of the world's ocean carbon sink. Including these extensive oceanic areas in NDCs has been debated [Rickels *et al.*, 2023], particularly when comparing coastal states with large EEZs to landlocked states. This comparison raises questions about feasibility and the potential impact on global carbon accounting [McNeil, 2006, Karstensen *et al.*, 2021]. As climate change mitigation efforts intensify under the Paris Agreement, the role of oceanic ecosystems is gaining attention. The vast areas of EEZs present both an opportunity and a challenge for carbon accounting.

The ocean differs from terrestrial carbon sinks in that oceanic carbon fluxes and subsequent storage are delocalized. The mixing of water masses in the ocean hinders the validation of local changes in stock measurements. Ocean carbon fluxes are inorganic,

unlike terrestrial biosphere fluxes, which occur directly between the atmosphere and the organic carbon pool. Instead carbon fluxes between the atmosphere and the ocean are determined by the CO₂ partial pressure ($p\text{CO}_2$) gradient at the air–sea interface and physical properties like turbulence and bubbles. Another distinction is that, in the ocean, discrimination must be made between total carbon fluxes and anthropogenic carbon fluxes. The preindustrial ocean is estimated to have degassed approximately 0.6 PgC per year to the atmosphere due to imbalances in natural river inputs and sediment losses of carbon [Regnier *et al.*, 2022]. This estimated preindustrial natural carbon degassing and its distribution must be subtracted from the total ocean carbon flux that is measured today in order to estimate the residual anthropogenic ocean carbon flux. In contrast with the land biosphere, the circulation of water masses and biogeochemical processes in the ocean result in regions of natural atmospheric carbon uptake (e.g. deep-water formation regions) and loss (e.g. equatorial upwelling regions). Consequently, ocean anthropogenic carbon uptake can manifest as both an enhancement in total carbon ingassing, and counterintuitively, a reduction in total carbon outgassing. The resulting anthropogenic carbon sink is generally quantified with a combination of global ocean biogeochemical models and observation-based products. Global ocean biogeochemical models show relatively good agreement with the observed spatial and temporal variability of surface ocean $p\text{CO}_2$ over large spatial and annual scales [Hauck *et al.*, 2020, Friedlingstein *et al.*, 2023]. However, they are subject to biases, notably in the transport of carbon from the surface to the deep ocean [Bourgeois *et al.*, 2022], and potentially underestimate the mean ocean carbon sink [IPCC, 2021]. Measurements are therefore essential for estimating the total carbon flux from observations and for evaluating models. However, while the number of observations has increased considerably, sampling is not evenly distributed both spatially and temporally, leading to significant biases [Hauck *et al.*, 2023b].

France's EEZ covers about 10 million km², second only to the United States in global extent. It includes overseas territories spread across all ocean basins with the exception of the Arctic, making it a major contributor to the ocean carbon cycle. Here, we use the French EEZ as a case study to highlight the

potential pitfalls of incorporating the open ocean carbon sink in NDCs. Using a high-resolution ocean biogeochemical model forced with a recent atmospheric reanalysis, as well available $p\text{CO}_2$ observations, we assess the French EEZ anthropogenic carbon sink over the last forty years. Our analysis illustrates the multiple challenges associated with monitoring and assessing the dynamics of this carbon sink and highlights the conceptual complexities and incompatibilities surrounding the incorporation of the open ocean carbon sink into NDCs. We do not address the inclusion of coastal blue carbon ecosystems in NDCs, which is already taking place and is beyond the scope of this paper.

2. Methods

We use a high-resolution ocean biogeochemical model forced with atmospheric reanalyses. The model is therefore closely aligned to recent climate change and variability. The use of a model allows us to explicitly compute anthropogenic carbon fluxes in space and time, providing a comprehensive view of the underlying mechanisms and variability.

2.1. NEMO-PISCES ocean biogeochemical model

Historical ocean-only simulations were performed using version 3.6 of the Nucleus for European Modelling of the Ocean (NEMO). This comprehensive framework includes version 3 of the Louvain-La-Neuve Sea Ice Model (LIM) [Fichefet and Maqueda, 1997] and version 2 of the Pelagic Interaction Scheme for Carbon and Ecosystem Studies (PISCES) biogeochemical model [Aumont *et al.*, 2015]. The PISCES ocean biogeochemical model [Aumont *et al.*, 2015] includes key elements for the assessment of air-sea carbon fluxes and oceanic sequestration of anthropogenic carbon. This includes carbon in various non-living forms (dissolved inorganic carbon, dissolved organic carbon, particulate inorganic carbon (calcite), and particulate organic carbon) and living compartments (nanophytoplankton, diatoms, microzooplankton, and mesozooplankton). It also includes total alkalinity and essential marine macro/micro nutrients (nitrate, ammonium, phosphate, silicate and iron). No vegetated coastal ecosystems, such as blue carbon ecosystems, are

explicitly represented in the model. Air-sea CO_2 fluxes follow Ocean Model Intercomparison Project protocols [Orr *et al.*, 2017], with gas exchange dependent on the air-sea partial pressure gradient and a parameterization of the instantaneous gas transfer velocity that depends on 10 m atmospheric wind speed [Wanninkhof, 1992, Ho *et al.*, 2006]. We implemented the widely used “eddy-permitting” (0.25° horizontal grid) global ocean configuration eORCA025, which contains 75 vertical levels, including 7 levels in the top 10 m. The same model configuration has previously been used to assess the efficacy of marine carbon dioxide removal (mCDR) interventions, including macroalgae afforestation [Berger *et al.*, 2023] and ocean alkalinity enhancement [Kwiatkowski *et al.*, 2023] and has been shown to simulate total and anthropogenic ocean carbon fluxes in broad agreement with data-based estimates [Kwiatkowski *et al.*, 2023]. The simulated estimate of the global oceanic carbon sink for 2011–2020 is $9.59 \text{ GtCO}_2\cdot\text{yr}^{-1}$, consistent with the multi-model global carbon budget estimate of $10.3 \text{ GtCO}_2\cdot\text{yr}^{-1}$ ($9\text{--}12 \text{ GtCO}_2\cdot\text{yr}^{-1}$) [Friedlingstein *et al.*, 2023].

2.2. Simulations

Simulations were initiated in 1958, based on data-derived climatologies and a coarser resolution NEMO-PISCES historical simulation of the anthropogenic ocean carbon stock [Terhaar *et al.*, 2019]. The model was then run from 1958 to 2015 using atmospheric forcings provided by the Drakkar forcing set 5.2 (DFS5) [Dussin *et al.*, 2016], based on the ERA-Interim reanalysis over 1979–2015. A historical simulation was forced with yearly averaged historical atmospheric CO_2 concentrations reconstructed from ice cores and atmospheric records [Le Quéré *et al.*, 2015]. A parallel preindustrial control run (PI control) was also performed, in which the atmospheric forcings were identical but the atmospheric CO_2 mole fraction was held constant at the preindustrial level, defined as 287 ppm in 1870. Total air-sea CO_2 fluxes were derived from the historical simulation while anthropogenic fluxes were calculated as the difference between fluxes in the historical simulation and the parallel PI control.

An additional set of simulations (historical and PI control) was performed, incorporating atmospheric

forcings from JRA55-do v1.5 [Tsuji et al., 2018] which cover the period from 1958 to near present. These simulations were run from 2006 to 2020, initiated from DFS5 simulations. The DFS5 and JRA55-do v1.5 forced simulations were finally merged in January 2014 to form two coherent historical and PI control simulations that cover the period 1958 to 2020.

2.3. Observations

Robust $p\text{CO}_2$ measurements are critical for estimating total carbon fluxes from observations. In this context, we used the latest version of the Surface Ocean CO_2 Atlas (SOCAT, <https://www.socat.info>), which contains about 43 million observations of surface $p\text{CO}_2$. We characterized the temporal and spatial coverage of observations in the French EEZ using the gridded product on a $1^\circ \times 1^\circ$ grid. This was compared to EEZ boundaries projected on the same grid using the Python *shapefile* function.

EEZ boundaries, including the French territories, were defined using the Maritime Boundaries Geodatabase, version 11 (Flanders Marine Institute (2019), <https://www.marineregions.org>). This analysis included certain disputed areas, including those contested by New Caledonia and Vanuatu, and by Tromelin and Mauritius.

3. Results

3.1. The anthropogenic open ocean carbon sink of the French EEZ

The simulated anthropogenic ocean carbon sink in the French EEZ over the period 2011–2020 was $0.21 \text{ GtCO}_2\cdot\text{yr}^{-1}$ (Figure 1). This is 7.5% of the global EEZ anthropogenic carbon sink and 2% of the total global oceanic anthropogenic carbon sink. Due to extensive overseas territories, notably in the Pacific and Indian Oceans, French waters were the third largest EEZ carbon sink, after the United Kingdom and Australia, absorbing the equivalent of about 50% of the 418 million tonnes of $\text{CO}_{2,\text{eq}}\cdot\text{yr}^{-1}$ emissions of France over 2011–2020 (territorial annual greenhouse gas emissions in 2011–2022) [Jones et al., 2023, Friedlingstein et al., 2023].

3.2. Variable regional contributions to the French ocean carbon sink

The model simulations indicate significant regional disparities in the French EEZ anthropogenic carbon sink. Southern Ocean territories exhibited the highest fluxes per unit area, with mean anthropogenic carbon fluxes ranging from 20 to $60 \text{ gCO}_2\cdot\text{m}^{-2}\cdot\text{yr}^{-1}$ (Figure 2), up to $160 \text{ gCO}_2\cdot\text{m}^{-2}\cdot\text{yr}^{-1}$ in winter. Notably, the Atlantic and Mediterranean coastal areas of mainland France also demonstrated relatively high area-specific anthropogenic carbon fluxes, ranging from 10 to $50 \text{ gCO}_2\cdot\text{m}^{-2}\cdot\text{yr}^{-1}$, reaching $100 \text{ gCO}_2\cdot\text{m}^{-2}\cdot\text{yr}^{-1}$ in winter. In contrast, the tropical and subtropical regions of the French EEZ displayed lower area-specific anthropogenic carbon fluxes, ranging from 5 to $30 \text{ gCO}_2\cdot\text{m}^{-2}\cdot\text{yr}^{-1}$. Despite lower area-specific fluxes, the areal extent of some of these tropical regions, notably in the Pacific territories, means that they are major drivers of the anthropogenic carbon sink in the French EEZ. For instance, the total uptake for French Polynesia and New Caledonia in 2020 was $83.7 \text{ MtCO}_2\cdot\text{yr}^{-1}$ and $31.8 \text{ MtCO}_2\cdot\text{yr}^{-1}$, respectively. The combined anthropogenic carbon sequestration capacity of these two regions exceeded that of all other French territories combined.

3.3. Historical trends in the French ocean carbon sink

Our simulations show that over the last 40 years the French EEZ sink increased from $140 \text{ MtCO}_2\cdot\text{yr}^{-1}$ to about $225 \text{ MtCO}_2\cdot\text{yr}^{-1}$ (Figure 3a). The largest increases occurred in French Polynesia, New Caledonia, the Southern Ocean Islands and Clipperton, with the increase near proportional to the initial sink ($R^2 = 0.96$). The observed increase of the French EEZ carbon sink corresponds to that of the global EEZ carbon sink, indicative of a response to the atmospheric carbon dioxide growth rate (Figure 3a). However, our simulations revealed a decline in the growth of the French carbon sink since 2013 with a particularly low carbon sink in 2016 observed in 7 out of 21 territories. This slowdown is distinct from a slowdown of the global EEZ carbon sink (Figure 3b). As a result, the French EEZ share of the global EEZ carbon

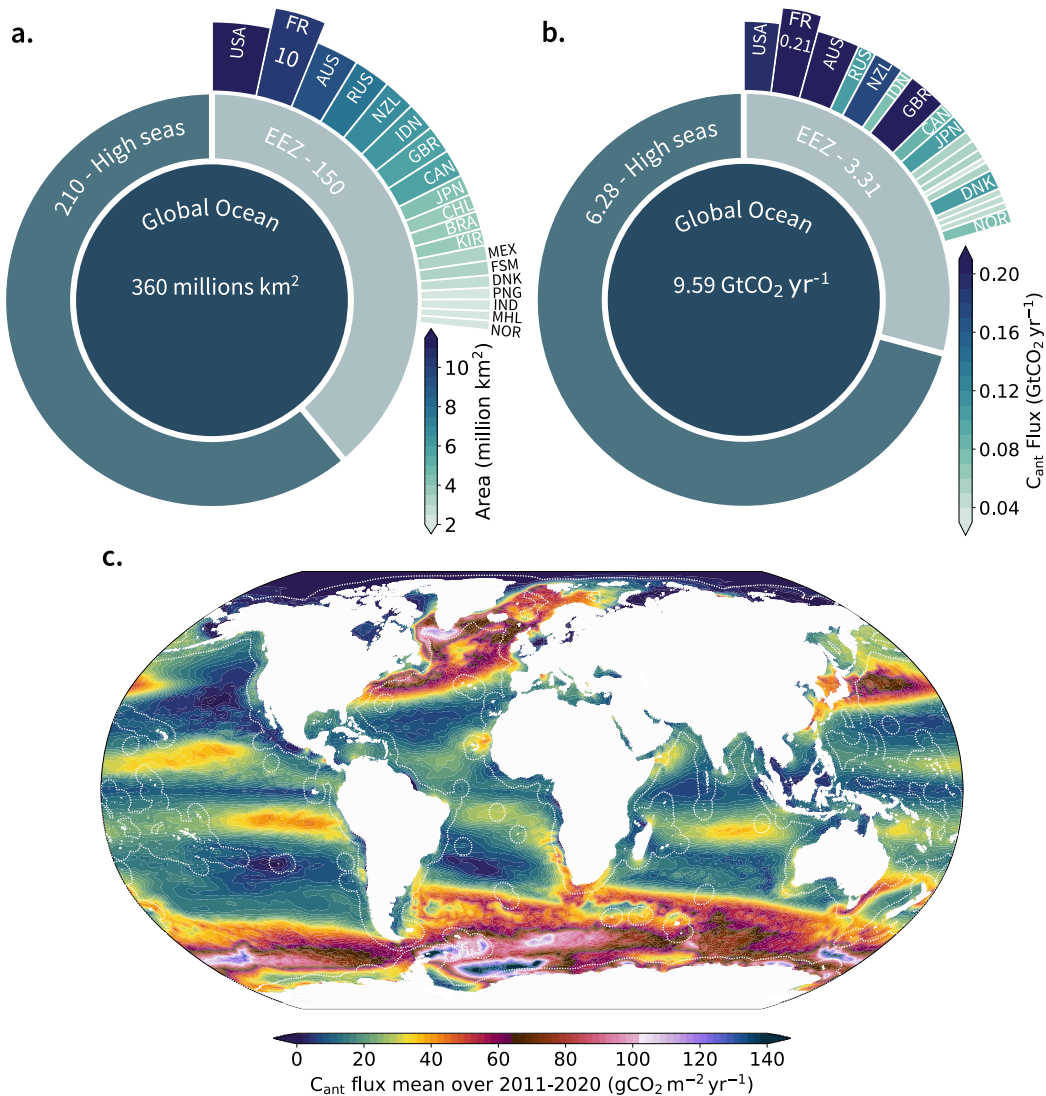


Figure 1. The extent of Exclusive Economic Zones and their associated anthropogenic carbon sink. (a) Surface area (million km²) of the world’s oceans, the high seas, the global Exclusive Economic Zone (EEZ), and the 19 largest EEZs (color bar), each identified by its ISO 3166 code. (b) Corresponding anthropogenic carbon sink values (in GtCO₂·yr⁻¹) for the same geographical entities: the global ocean, the high seas, the global EEZ (indicated by a numerical value), and the 19 largest EEZs sorted by extent. The anthropogenic carbon sink is averaged over the period 2011–2020 for each country. (c) Map of the mean global anthropogenic carbon sink over 2011–2020 in gCO₂·m⁻²·yr⁻¹.

sink declined from 7.3% to 6.4%, with French Polynesia, New Caledonia, and Amsterdam and St Paul Islands territories being the main contributors to this decline.

3.4. Disentangling anthropogenic and total ocean carbon fluxes and stocks

Analysis of the anthropogenic carbon sink using the French EEZ territories as a case study, highlights a

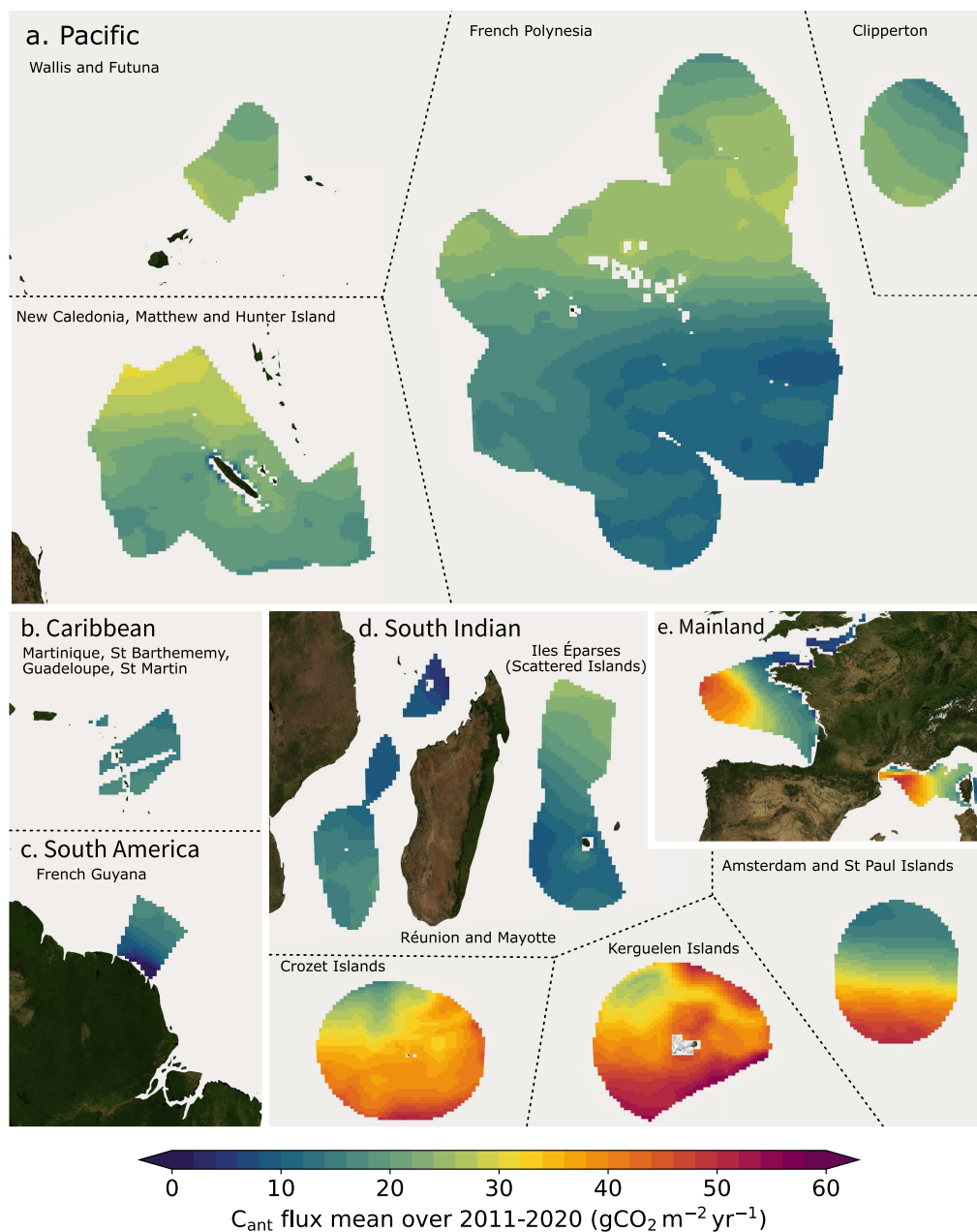


Figure 2. Distribution of the French EEZ anthropogenic carbon flux across territories. The mean anthropogenic carbon flux ($\text{gCO}_2 \cdot \text{m}^{-2} \cdot \text{yr}^{-1}$) over 2011–2020 in French territories of the (a) Pacific (New Caledonia, Matthew and Hunter Island, Wallis and Futuna, French Polynesia, and Clipperton), (b) Caribbean (Martinique, Guadeloupe, Saint-Martin, Saint-Barthélemy), (c) South America (French Guiana), (d) Indian Ocean (Juan de Nova, Bassas da India, Europa, Réunion and Tromelin) and Southern Ocean (Crozet, Kerguelen and Amsterdam and Saint Paul Islands), and (e) mainland France. All maps are on the same scale. Saint-Pierre and Miquelon has been omitted.

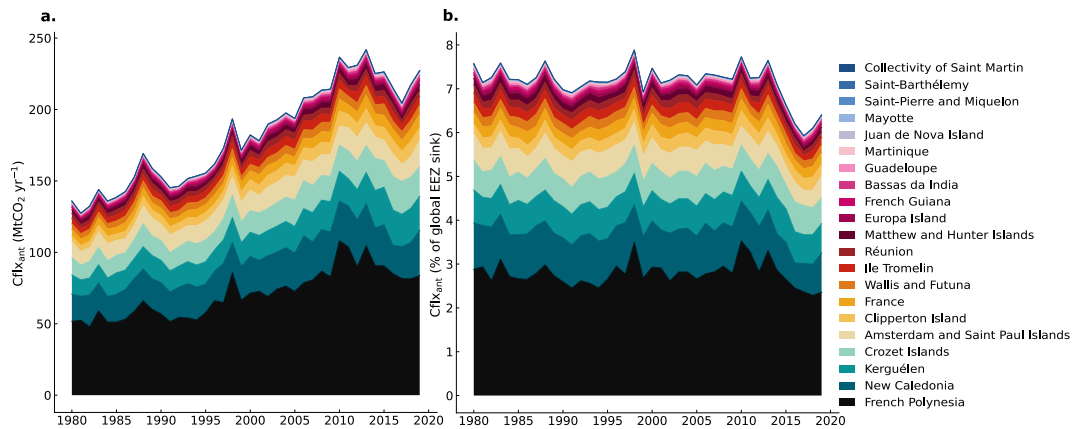


Figure 3. Evolution of the anthropogenic carbon sink in the territories of the French EEZ. The annual mean anthropogenic carbon sink presented as (a) absolute values and (b) percentages of the global EEZ anthropogenic carbon sink. The carbon sink values for each territory are stacked, and the cumulative total is the globally integrated French carbon sink.

number of features that are consistent across other EEZs.

3.4.1. *Net air–sea fluxes of anthropogenic carbon into an EEZ (or EEZ region) are not indicative of the change in anthropogenic carbon stocks within that EEZ*

For all of the French EEZ territories, there is an imbalance between the net air–sea anthropogenic carbon flux and the change in the ocean anthropogenic carbon stock (Figure 4a). Some EEZ territories are net exporters of anthropogenic carbon to other EEZs and the high seas. For example, roughly 25% ($3 \text{ gC}\cdot\text{m}^{-2}\cdot\text{yr}^{-1}$) of the net-air sea anthropogenic carbon flux in Kerguelen is not retained in its waters. While in Guadeloupe, the increase in the integrated anthropogenic carbon stock is approximately 4 times what it receives in net air–sea fluxes, with $12 \text{ gC}\cdot\text{m}^{-2}\cdot\text{yr}^{-1}$ supplied by waters that are transported into the Guadeloupe region. Ocean dynamics, therefore, lead to significant disparities between the carbon stocks within EEZ waters and the anthropogenic carbon uptake from the atmosphere.

3.4.2. *Anthropogenic carbon uptake occurs in regions of carbon ingassing and outgassing*

The French EEZ case study highlights the disconnect between total air–sea carbon fluxes and

anthropogenic carbon fluxes (Figure 4b). All territories of the French EEZ are anthropogenic carbon sinks with fluxes ranging from $2\text{--}11 \text{ gC}\cdot\text{m}^{-2}\cdot\text{yr}^{-1}$. However, the total air–sea carbon fluxes for the same EEZ territories range from -10 to $20 \text{ gC}\cdot\text{m}^{-2}\cdot\text{yr}^{-1}$. French EEZ territories can, therefore, exhibit net ingassing or outgassing of total carbon while still exhibiting anthropogenic carbon uptake. The French EEZ territory with the highest anthropogenic carbon fluxes (Kerguelen, C_{ant} : $11 \text{ gC}\cdot\text{m}^{-2}\cdot\text{yr}^{-1}$) has actually total carbon fluxes near zero.

3.5. *Observational coverage*

The NEMO-PISCES model permits the calculation of anthropogenic carbon fluxes in space and time, providing insight into carbon flux trends and the mismatch between carbon fluxes and carbon stocks. However, given the persistence of large discrepancies between data and models [Friedlingstein *et al.*, 2023], robust $p\text{CO}_2$ measurements are essential for estimating total carbon fluxes from observations. Therefore, good observational coverage is crucial, as under-sampling could lead to significant biases in fluxes reconstructed from observations [Hauck *et al.*, 2023b]. A review of the available SOCATv2023 $p\text{CO}_2$ measurements in French EEZ waters, showed that observational coverage remains limited (Figure 5). Compiled measurements for 2011–2021 are patchy in several

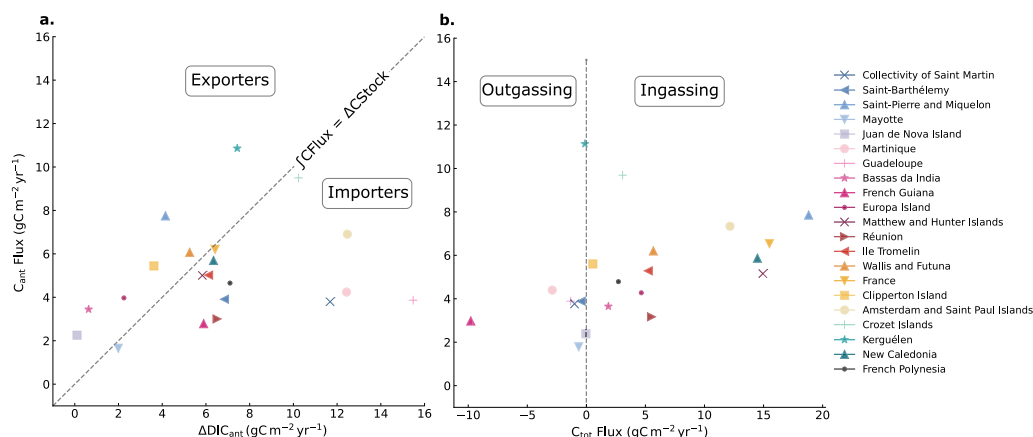


Figure 4. The relationship between total and anthropogenic carbon fluxes and anthropogenic carbon storage across French EEZ territories. (a) Comparison of the mean air–sea anthropogenic carbon flux ($\text{gC}\cdot\text{m}^{-2}\cdot\text{yr}^{-1}$) and the change in depth integrated anthropogenic carbon stock in each French EEZ territory ($\text{gC}\cdot\text{m}^{-2}\cdot\text{yr}^{-1}$). In the area identified as “importers”, the increase in the anthropogenic carbon stock exceeds the air–sea flux, indicating a net horizontal transport of carbon into territorial waters. Conversely, in the area identified as “exporters”, the air–sea anthropogenic carbon flux exceeds the increase in the inventory, indicating a net export of anthropogenic carbon to other EEZs or the high seas. (b) The mean anthropogenic carbon flux and mean total carbon flux in each French EEZ territory. The total carbon flux is the sum of the anthropogenic carbon flux and the natural carbon flux. A negative total carbon flux indicates a net flux of carbon to the atmosphere (outgassing). A positive total carbon flux indicates a net flux of carbon to the ocean (ingassing/uptake).

French territories. This is particularly striking in French Polynesia where spatial coverage is notably low. Large portions of the territory either have no observations at all or only one month of observations. Specifically, on a $1^\circ \times 1^\circ$ grid, only 14% of the French Polynesia EEZ grid cells have at least one observation, and a mere 1% has at least 2 months of observations available. The southern Indian Ocean also has limited data, with 35% of Crozet, 73% of Amsterdam and Saint Paul and 83% of Kerguelen Island covered by at least one observation. However, this coverage drops to 0%, 5.5% and 7% for those three islands, respectively, when the criterion is at least 4 months of observations per year. This lack of data is particularly problematic as this region plays an important role in carbon uptake, but only a fraction of the seasonal cycle is present in the observations. On the contrary, the Atlantic territories have good spatial and temporal coverage, with 75% of French Guiana territory covered with at least 6 months of data and 66% for both mainland France and Martinique.

4. Discussion

4.1. The French EEZ case study

Our study reveals a significant anthropogenic carbon sink in the world’s EEZs, accounting for $3.55 \text{ GtCO}_2\cdot\text{yr}^{-1}$ or 35% of the global ocean CO_2 sink in 2020. The anthropogenic carbon sink in EEZs can be a similar order of magnitude to national emissions: for example, the French EEZ sink corresponds to around 50% of French $\text{CO}_{2,\text{eq}}$ territorial emissions, while the two largest EEZ sinks, Australia and the UK, both absorb the equivalent of around 40% of their emissions. Even more absurd, the waters of 34 countries absorb more than their own emissions, up to 1640 times more for Tuvalu. We estimate an increase in the anthropogenic carbon sink within the French EEZ over the last 40 years, from $140 \text{ MtCO}_2\cdot\text{yr}^{-1}$ in 1980 to about $225 \text{ MtCO}_2\cdot\text{yr}^{-1}$ in 2020. This is driven by the increase in the global ocean carbon sink in response to rising atmospheric CO_2 levels [IPCC,

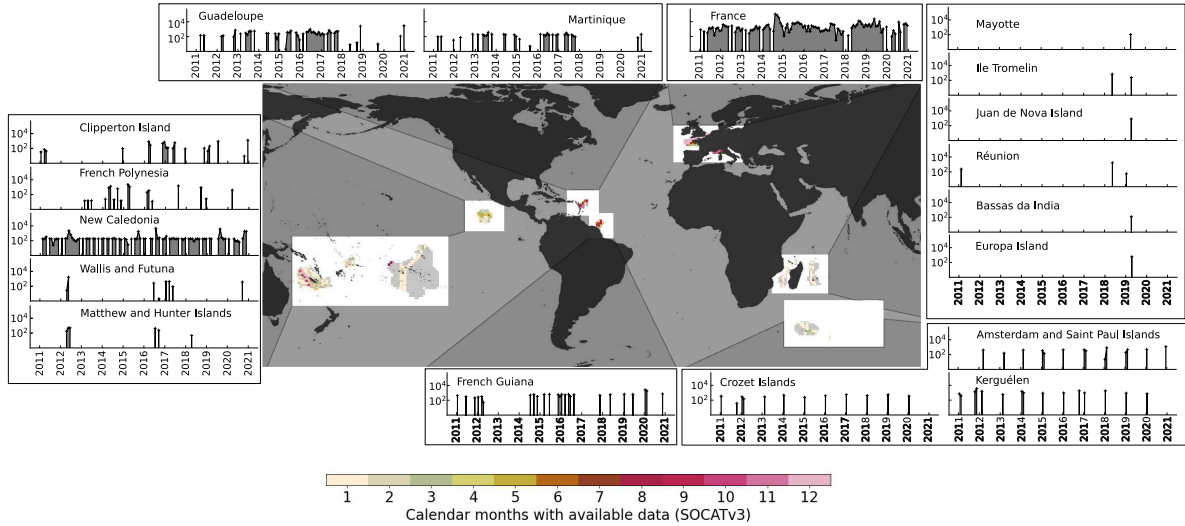


Figure 5. The scarcity of ocean carbon observations in the French EEZ. Spatial and temporal resolution of $p\text{CO}_2$ measurements (gridded SOCATv3) in the French EEZ during the period 2011–2021. Central map: Calendar months with available data in the French EEZ, where 12 indicates full coverage of the seasonal cycle and light gray indicates no measurements available for the period 2011–2021. Surrounding time series: Number of $p\text{CO}_2$ measurements for each French EEZ territory from 2011 to 2021. The grey area below the lines indicates continuous observations with at least one measurement per month.

2021, Friedlingstein *et al.*, 2023]. However, we have identified a recent decrease in the French EEZ that is not reflected in the global EEZ carbon sink. This decrease may be attributable to changes in atmospheric forcing in our simulations that affect ocean dynamics and redistribute air–sea fluxes.

Using the French EEZ as a case study, we highlight the considerable diversity among EEZ territories in terms of total air–sea carbon fluxes, anthropogenic air–sea carbon fluxes and changing oceanic C_{ant} stocks. French EEZ territories exhibit both total uptake of carbon from the atmosphere (ingassing) and total loss of carbon to the atmosphere (outgassing). Yet despite this, over the simulated period, all EEZ territories are net absorbers of anthropogenic carbon, albeit with the magnitude of the area-specific air–sea C_{ant} flux differing by a factor of 6 between territories. Moreover, territories show wide disparities in the accumulation of C_{ant} in their waters, and this accumulation is not equivalent to the cumulative air–sea C_{ant} flux. This disparity is a consequence of the advection and mixing of C_{ant} within the ocean, which results in certain EEZ territories being net exporters of C_{ant} to adjacent waters, while others are net importers. Despite the temptation to incorporate ocean

carbon fluxes into NDCs due to the magnitude of associated anthropogenic carbon sinks, the drivers and properties of ocean carbon fluxes, as well as the wider context of the remaining carbon budget, make this highly inadvisable.

4.2. Pitfalls of including EEZ carbon fluxes in NDCs

One of the principal issues with including EEZs in NDCs, is that ocean anthropogenic carbon uptake is already accounted for when estimating the remaining carbon budget [Lamboll *et al.*, 2023, Rogelj *et al.*, 2016, Matthews *et al.*, 2021]. Consequently, the only rationale for including EEZs in NDCs lies in demonstrating that human interventions have enhanced the anthropogenic carbon sink. The transient climate warming response to cumulative CO_2 emissions (TCRE) is central to remaining carbon budget estimates and can be derived from both models and observations using a variety of methodologies. TCRE estimates invariably account for unmanaged ocean anthropogenic carbon uptake, including that which is projected to occur in EEZs. As such, our best estimates of permissible emissions to

stay within 1.5 °C or 2 °C global warming targets already assume that ocean anthropogenic carbon uptake in EEZs will continue in response to biogeophysical forcing. Including total anthropogenic fluxes, as opposed to any managed additional flux, into NDCs would therefore break the coherence between the remaining carbon budget and the global stocktake.

Moreover, for consistency, any management practices found to have diminished EEZ C_{ant} uptake, would equally need to be declared [Bach *et al.*, 2021]. The concept of additionality requires a standardized definition applicable across all contexts. For instance, notable disparities exist in estimating anthropogenic land-use carbon fluxes between the model-based Global Carbon Budget (GCB) and the inventories submitted by countries to the United Nations Framework Convention on Climate Change (UNFCCC). The former includes only direct anthropogenic effects, while the inventories reported by countries generally include indirect removals on that land, such as the fertilization effect caused by increasing atmospheric CO_2 concentrations [Grassi *et al.*, 2023, Gidden *et al.*, 2023]. Similarly, the anthropogenic ocean carbon sink operates independently of human management, primarily in response to increased atmospheric CO_2 . Although ocean C_{ant} uptake is nearly ubiquitous, the magnitude of this flux at the air–sea interface is highly regionally variable (Figure 1) and strongly determined by ocean dynamics and carbonate chemistry. In particular, cold deep-water formation regions such as the North Atlantic and Southern Ocean are major hotspots of anthropogenic carbon uptake (Figure 1) as water masses containing C_{ant} are subducted. As such, both historical and future C_{ant} uptake in an EEZ is almost entirely determined by the natural ocean dynamics and carbonate chemistry of the waters, and the impact of climate change on these properties (in conjunction with global CO_2 emissions). Crucially, these oceanic properties are almost entirely independent of human intervention and presently beyond the control of any nation state.

Furthermore, integrating EEZ carbon fluxes into NDCs presents a challenge to fairness and equity, and may raise climate justice concerns. C_{ant} uptake at the air–sea interface is higher in high latitude regions, such as the Southern Ocean and the North Atlantic (Figure 1c), coincident with the EEZs of a small number of developed countries that have historically high

emissions. The potential for human enhancement of C_{ant} uptake may additionally be greater in these regions due to generally lower sea surface temperatures (i.e., higher CO_2 solubility, [Berger *et al.*, 2023, Feng *et al.*, 2017, He and Tyka, 2023]). Conversely, interior ocean C_{ant} storage is higher in subtropical regions [Gruber *et al.*, 2023], coincident with the EEZs of developing countries that have historically low emissions. The question of which nation could rightfully claim credit for Ocean C_{ant} would arise because of large differences between where uptake initially occurs and where C_{ant} is subsequently stored. The functioning of the ocean is global and cannot be divided into administrative units.

The transboundary nature of oceanic carbon also presents a heightened risk of potential double counting. Many EEZs are located near multiple borders; EEZ territories may be net importers or exporters of C_{ant} to adjacent waters, regardless of whether they ingest or outgas total carbon (Figure 4). This situation exacerbates the risks of potential double counting [Luisetti *et al.*, 2020]. Moreover, interventions in the waters of one EEZ can cause harm in another, particularly in the context of carbon dioxide removal (CDR) projects [Tagliabue *et al.*, 2023, Boyd *et al.*, 2022]. Thus, the emergence of ocean CDR poses novel risks that require specific policies and legislation [Boettcher *et al.*, 2021]. The development of such a comprehensive legal framework is imperative, but is challenging and necessitates an arduous process due to the ocean’s status as a shared resource requiring extensive international cooperation. Although existing international treaties, such as the London Protocol, have addressed transboundary environmental risks, focusing on ocean fertilization [Dixon *et al.*, 2014], there remains a notable absence of a comprehensive legal framework dedicated to marine CDR research [National Academies of Sciences, Engineering, and Medicine, 2022]. However various legal norms exist as well as codes of conduct to help guide responsible decisions in marine CDR [Boettcher *et al.*, 2023].

4.3. *Enhancing monitoring and estimation of oceanic carbon sinks: imperatives for climate mitigation and reporting*

Although the inclusion of EEZs in NDCs is misguided, an accurate estimate of the EEZ carbon sink is highly

desirable given its significant contribution to the global ocean carbon sink (up to 35% in our simulations). Enhanced monitoring of EEZ carbon fluxes is essential to track long-term trends and variability, as the ocean carbon sink is vulnerable to shifts caused by both direct and indirect anthropogenic drivers. Climate change exerts a diverse and multifaceted influence on ocean carbon fluxes and storage, via temperature increases, reduced buffering capacity, and changes in circulation and marine productivity. In addition, anthropogenic impacts on runoff and river inputs [Regnier *et al.*, 2022], bottom trawling [Atwood *et al.*, 2024, Sala *et al.*, 2021], coastal development, and deep-sea mining can also have substantial impacts on carbon fluxes and stocks. Predicting future changes in carbon fluxes and storage is therefore a considerable challenge, requiring the establishment of an efficient observational network to accurately constrain these dynamics. Moreover, monitoring the changes and variability is critical to delivering accurate carbon budgets to the parties to the UNFCCC, and to providing a comprehensive global understanding of carbon stocks and fluxes. This understanding assists parties in formulating mitigation targets consistent with the temperature goals of the Paris Agreement. Similar concerns have been raised for terrestrial ecosystems, highlighting the need for improved monitoring of natural and anthropogenic carbon fluxes [Gidden *et al.*, 2023, Nabuurs *et al.*, 2023].

Recent improvements in observational capabilities and developments in machine-learning based interpolation methods have facilitated the generation of global gap-filled, high-resolution data products of oceanic $p\text{CO}_2$ and ocean air–sea CO_2 fluxes [Fay *et al.*, 2021]. These developments have improved our understanding of long-term trends in coastal air–sea carbon fluxes [Roobaert *et al.*, 2024] and enabled model-data combination to estimate global coastal fluxes [Resplandy *et al.*, 2024]. However, despite this progress, the quantification of coastal CO_2 flux trends from observations remains severely constrained by limited spatial coverage and/or relatively short time series duration, while large discrepancies between data and models persist [Hauck *et al.*, 2023a, Resplandy *et al.*, 2024]. Additionally, the anthropogenic component of the air–sea carbon flux cannot be directly observed. While local estimates of DIC_{ant} are possible (e.g. though the ΔC^* method [Gruber *et al.*,

1996] or the transient time distribution method [Hall *et al.*, 2002], data-based methods can only estimate global anthropogenic carbon uptake. Furthermore, model estimates generally do not account for anthropogenic impacts unrelated to atmospheric CO_2 and climate change.

In the context of reporting on potential CDR projects, establishing a baseline is critical as it is the starting point against which emission reductions or additional sinks are measured. Accurate monitoring helps avoid errors in establishing this baseline and ensures that it reflects carbon fluxes and storage in the absence of human intervention [Ho *et al.*, 2023]. Accurate monitoring of carbon fluxes will allow for better accounting of managed carbon fluxes and avoiding methodological errors in setting baseline emissions in reporting of carbon projects, within NDCs or elsewhere [Cooley *et al.*, 2023]. In addition, a poorly defined baseline can lead to inaccurate accounting. This can be particularly detrimental if emission reductions are overestimated, creating a discrepancy between the remaining emissions allowed to meet climate change targets and the actual remaining emissions.

Declaration of interests

The authors do not work for, advise, own shares in, or receive funds from any organization that could benefit from this article, and have declared no affiliations other than their research organizations.

Dedication

The manuscript was written through contributions of all authors. All authors have given approval to the final version of the manuscript.

References

- Atwood, T. B., Romanou, A., DeVries, T., Lerner, P. E., Mayorga, J. S., Bradley, D., Cabral, R. B., Schmidt, G. A., and Sala, E. (2024). Atmospheric CO_2 emissions and ocean acidification from bottom-trawling. *Front. Mar. Sci.*, 10, article no. 1125137.
- Aumont, O., Ethé, C., Tagliabue, A., Bopp, L., and Gehlen, M. (2015). PISCES-v2: an ocean biogeochemical model for carbon and ecosystem studies. *Geosci. Model Dev.*, 8(8), 2465–2513.

- Bach, L. T., Tamsitt, V., Gower, J., Hurd, C. L., Raven, J. A., and Boyd, P. W. (2021). Testing the climate intervention potential of ocean afforestation using the great atlantic sargassum belt. *Nat. Commun.*, 12(1), article no. 2556.
- Barbier, E. B., Hacker, S. D., Kennedy, C., Koch, E. W., Stier, A. C., and Silliman, B. R. (2011). The value of estuarine and coastal ecosystem services. *Ecol. Monogr.*, 81(2), 169–193.
- Berger, M., Kwiatkowski, L., Ho, D. T., and Bopp, L. (2023). Ocean dynamics and biological feedbacks limit the potential of macroalgae carbon dioxide removal. *Environ. Res. Lett.*, 18(2), article no. 024039.
- Bindoff, N. L., Cheung, W. W. L., Kairo, J. G., Arístegui, J., Guinder, V. A., Hallberg, R., Hilmi, N., Jiao, N., Karim, M. S., Levin, L., O'Donoghue, S., Purca Cucicapusa, S. R., Rinkevich, B., Suga, T., Tagliabue, A., and Williamson, P. (2019). Changing Ocean, Marine Ecosystems, and Dependent Communities. In Pörtner, H.-O., Roberts, D. C., Masson-Delmotte, V., Zhai, P., Tignor, M., Poloczanska, E., Mintenbeck, K., Alegría, A., Nicolai, M., Okem, A., Petzold, J., Rama, B., and Weyer, N. M., editors, *IPCC Special Report on the Ocean and Cryosphere in a Changing Climate*, pages 477–587. Intergovernmental Panel on Climate Change.
- Boettcher, M., Brent, K., Buck, H. J., Low, S., McLaren, D., and Mengis, N. (2021). Navigating potential hype and opportunity in governing marine carbon removal. *Front. Clim.*, 3, article no. 664456.
- Boettcher, M., Chai, F., Conathan, M., Cooley, S., Keller, D., Klinsky, S., Lezaun, J., Renforth, P., Scobie, M., and Webb, R. (2023). *A Code of Conduct for Marine Carbon Dioxide Removal Research*. Aspen Institute Energy and Environment Program, <https://www.aspeninstitute.org/publications/a-code-of-conduct-for-marine-carbon-dioxide-removal-research/>.
- Bourgeois, T., Goris, N., Schwinger, J., and Tjiputra, J. F. (2022). Stratification constrains future heat and carbon uptake in the southern ocean between 30°s and 55°s. *Nat. Commun.*, 13(1), article no. 340.
- Boyd, P. W., Bach, L. T., Hurd, C. L., Paine, E., Raven, J. A., and Tamsitt, V. (2022). Potential negative effects of ocean afforestation on offshore ecosystems. *Nat. Ecol. Evol.*, 6(6), 675–683.
- Cooley, S. R., Klinsky, S., Morrow, D. R., and Satterfield, T. (2023). Sociotechnical considerations about ocean carbon dioxide removal. *Annu. Rev. Mar. Sci.*, 15(1), 41–66.
- Dixon, T., Garrett, J., and Kleverlaan, E. (2014). Update on the london protocol – developments on transboundary CCS and on geoengineering. *Energy Procedia*, 63, 6623–6628.
- Dussin, R., Brodeau, L., and Barnier, B. (2016). The making of drakkar forcing set DFS5. DRAKKAR/MyOcean Report 01-04-16.
- Fay, A. R., Gregor, L., Landschützer, P., McKinley, G. A., Gruber, N., Gehlen, M., Iida, Y., Laruelle, G. G., Rödenbeck, C., Roobaert, A., and Zeng, J. (2021). SeaFlux: harmonization of air–sea CO₂ fluxes from surface *p*CO₂ data products using a standardized approach. *Earth Syst. Sci. Data*, 13(10), 4693–4710.
- Feng, E. Y., Koeve, W., Keller, D. P., and Oschlies, A. (2017). Model-based assessment of the CO₂ sequestration potential of coastal ocean alkalization. *Earth's Future*, 5(12), 1252–1266.
- Fichefet, T. and Maqueda, M. A. M. (1997). Sensitivity of a global sea ice model to the treatment of ice thermodynamics and dynamics. *J. Geophys. Res. C*, 102(C6), 12609–12646.
- Friedlingstein, P., O'Sullivan, M., Jones, M. W., Andrew, R. M., Bakker, D. C. E., Hauck, J., Landschützer, P., Le Quéré, C., Luijkx, I. T., Peters, G. P., Peters, W., Pongratz, J., Schwingshackl, C., Sitch, S., Canadell, J. G., Ciais, P., Jackson, R. B., Alin, S. R., Anthoni, P., Barbero, L., Bates, N. R., Becker, M., Bellouin, N., Decharme, B., Bopp, L., Brasika, I. B. M., Cadule, P., Chamberlain, M. A., Chandra, N., Chau, T.-T.-T., Chevallier, F., Chini, L. P., Cronin, M., Dou, X., Enyo, K., Evans, W., Falk, S., Feely, R. A., Feng, L., Ford, D. J., Gasser, T., Ghattas, J., Gkritzalis, T., Grassi, G., Gregor, L., Gruber, N., Gürses, O., Harris, I., Hefner, M., Heinke, J., Houghton, R. A., Hurtt, G. C., Iida, Y., Ilyina, T., Jacobson, A. R., Jain, A., Jarníková, T., Jersild, A., Jiang, F., Jin, Z., Joos, F., Kato, E., Keeling, R. F., Kennedy, D., Klein Goldewijk, K., Knauer, J., Korsbakken, J. I., Körtzinger, A., Lan, X., Lefèvre, N., Li, H., Liu, J., Liu, Z., Ma, L., Marland, G., Mayot, N., McGuire, P. C., McKinley, G. A., Meyer, G., Morgan, E. J., Munro, D. R., Nakaoka, S.-I., Niwa, Y., O'Brien, K. M., Olsen, A., Omar, A. M., Ono, T., Paulsen, M., Pierrot, D., Pockock, K., Poulter, B., Powis, C. M., Rehder, G., Resplandy, L., Robertson, E., Rödenbeck, C., Rosan, T. M., Schwinger, J., Séférian, R., Smallman, T. L.,

- Smith, S. M., Sospedra-Alfonso, R., Sun, Q., Sutton, A. J., Sweeney, C., Takao, S., Tans, P. P., Tian, H., Tilbrook, B., Tsujino, H., Tubiello, F., van der Werf, G. R., van Ooijen, E., Wanninkhof, R., Watanabe, M., Wimart-Rousseau, C., Yang, D., Yang, X., Yuan, W., Yue, X., Zaehle, S., Zeng, J., and Zheng, B. (2023). Global carbon budget 2023. *Earth Syst. Sci. Data*, 15(12), 5301–5369.
- Friess, D., Yando, E., Alemu, I. J., Wong, L.-W., Soto, S., and Bhatia, N. (2020). Ecosystem services and disservices of mangrove forests and salt marshes. *Oceanogr. Mar. Biol.*, 58, 107–142.
- Gidden, M. J., Gasser, T., Grassi, G., Forsell, N., Janssens, I., Lamb, W. F., Minx, J., Nicholls, Z., Steinhauser, J., and Riahi, K. (2023). Aligning climate scenarios to emissions inventories shifts global benchmarks. *Nature*, 624(7990), 102–108.
- Grassi, G., Schwingshackl, C., Gasser, T., Houghton, R. A., Sitch, S., Canadell, J. G., Cescatti, A., Ciais, P., Federici, S., Friedlingstein, P., Kurz, W. A., Sanz Sanchez, M. J., Abad Viñas, R., Alkama, R., Bultan, S., Ceccherini, G., Falk, S., Kato, E., Kennedy, D., Knauer, J., Korosuo, A., Melo, J., McGrath, M. J., Nabel, J. E. M. S., Poulter, B., Romanovskaya, A. A., Rossi, S., Tian, H., Walker, A. P., Yuan, W., Yue, X., and Pongratz, J. (2023). Harmonising the land-use flux estimates of global models and national inventories for 2000–2020. *Earth Syst. Sci. Data*, 15(3), 1093–1114.
- Gruber, N., Bakker, D. C. E., DeVries, T., Gregor, L., Hauck, J., Landschützer, P., McKinley, G. A., and Müller, J. D. (2023). Trends and variability in the ocean carbon sink. *Nat. Rev. Earth Environ.*, 4(2), 119–134.
- Gruber, N., Sarmiento, J. L., and Stocker, T. F. (1996). An improved method for detecting anthropogenic CO₂ in the oceans. *Global Biogeochem. Cycles*, 10(4), 809–837.
- Hall, T. M., Haine, T. W., and Waugh, D. W. (2002). Inferring the concentration of anthropogenic carbon in the ocean from tracers. *Global Biogeochem. Cycles*, 16(4), 78–1.
- Hauck, J., Gregor, L., Nissen, C., Patara, L., Hague, M., Mongwe, P., Bushinsky, S., Doney, S. C., Gruber, N., Le Quéré, C., Manizza, M., Mazloff, M., Monteiro, P. M. S., and Terhaar, J. (2023a). The southern ocean carbon cycle 1985–2018: Mean, seasonal cycle, trends, and storage. *Global Biogeochem. Cycles*, 37(11), article no. e2023GB007848.
- Hauck, J., Nissen, C., Landschützer, P., Rödenbeck, C., Bushinsky, S., and Olsen, A. (2023b). Sparse observations induce large biases in estimates of the global ocean CO₂ sink: an ocean model subsampling experiment. *Phil. Trans. R. Soc. Lond. A*, 381(2249), article no. 20220063.
- Hauck, J., Zeising, M., Le Quéré, C., Gruber, N., Bakker, D. C. E., Bopp, L., Chau, T. T. T., Gürses, O., Ilyina, T., Landschützer, P., Lenton, A., Resplandy, L., Rödenbeck, C., Schwinger, J., and Séférian, R. (2020). Consistency and challenges in the ocean carbon sink estimate for the global carbon budget. *Front. Mar. Sci.*, 7, article no. 571720.
- He, J. and Tyka, M. D. (2023). Limits and CO₂ equilibration of near-coast alkalinity enhancement. *Biogeosciences*, 20(1), 27–43.
- Ho, D. T., Bopp, L., Palter, J. B., Long, M. C., Boyd, P. W., Neukermans, G., and Bach, L. T. (2023). Monitoring, reporting, and verification for ocean alkalinity enhancement. *State of the Planet*, 2-oae2023, 1–12.
- Ho, D. T., Law, C. S., Smith, M. J., Schlosser, P., Harvey, M., and Hill, P. (2006). Measurements of air-sea gas exchange at high wind speeds in the southern ocean: Implications for global parameterizations. *Geophys. Res. Lett.*, 33(16), article no. L16611.
- IPCC (2021). Summary for policymaker. In Masson-Delmotte, V., Zhai, P., Pirani, S., Connors, C., Péan, S., Berger, N., Caud, Y., Chen, L., Goldfarb, M., and Scheel Monteiro, P. M., editors, *IPCC, 2021: Summary for Policymakers. Climate Change 2021: The Physical Science Basis. Contribution of Working Group I to the Sixth Assessment Report of the Intergovernmental Panel on Climate Change*. Cambridge University Press, Cambridge, UK and New York, NY, USA.
- Jones, M. W., Peters, G. P., Gasser, T., Andrew, R. M., Schwingshackl, C., Gütschow, J., Houghton, R. A., Friedlingstein, P., Pongratz, J., and Le Quéré, C. (2023). National contributions to climate change due to historical emissions of carbon dioxide, methane, and nitrous oxide since 1850. *Sci. Data*, 10(1), article no. 155.
- Karstensen, J., Rickels, W., Testor, P., and Telszewski, M. (2021). Valuing the ocean carbon sink in light of national climate action plans. *Oceanography*, 34, 50–51. <https://hal.science/hal-03870013>.
- Kwiatkowski, L., Berger, M., Bopp, L., Doléac, S., and Ho, D. T. (2023). Contrasting carbon dioxide re-

- removal potential and nutrient feedbacks of simulated ocean alkalinity enhancement and macroalgae afforestation. *Environ. Res. Lett.*, 18(12), article no. 124036.
- Lamboll, R. D., Nicholls, Z. R. J., Smith, C. J., Kikstra, J. S., Byers, E., and Rogelj, J. (2023). Assessing the size and uncertainty of remaining carbon budgets. *Nat. Clim. Change*, 13(12), 1360–1367.
- Le Quéré, C., Moriarty, R., Andrew, R. M., Canadell, J. G., Sitch, S., Korsbakken, J. I., Friedlingstein, P., Peters, G. P., Andres, R. J., Boden, T. A., Houghton, R. A., House, J. I., Keeling, R. F., Tans, P., Arneeth, A., Bakker, D. C. E., Barbero, L., Bopp, L., Chang, J., Chevallier, F., Chini, L. P., Ciais, P., Fader, M., Feely, R. A., Gkritzalis, T., Harris, I., Hauck, J., Ilyina, T., Jain, A. K., Kato, E., Kitidis, V., Klein Goldewijk, K., Koven, C., Landschützer, P., Lauvset, S. K., Lefèvre, N., Lenton, A., Lima, I. D., Metzl, N., Millero, F., Munro, D. R., Murata, A., Nabel, J. E. M. S., Nakaoka, S., Nojiri, Y., O'Brien, K., Olsen, A., Ono, T., Pérez, F. F., Pfeil, B., Pierrot, D., Poulter, B., Rehder, G., Rödenbeck, C., Saito, S., Schuster, U., Schwinger, J., Séférian, R., Steinhoff, T., Stocker, B. D., Sutton, A. J., Takahashi, T., Tilbrook, B., van der Laan-Luijkx, I. T., van der Werf, G. R., van Heuven, S., Vandemark, D., Viovy, N., Wiltshire, A., Zaehle, S., and Zeng, N. (2015). Global carbon budget 2015. *Earth Syst. Sci. Data*, 7(2), 349–396.
- Lecerf, M., Herr, D., Thomas, T., Elverum, C., Delrieu, E., and Picourt, L. (2021). *Coastal and marine ecosystems as Nature-based Solutions in new or updated Nationally Determined Contributions*. Ocean & Climate Platform, Conservation International, IUCN, GIZ, Rare, The Nature Conservancy, Wetlands International and WWF.
- Luisetti, T., Ferrini, S., Grilli, G., Jickells, T. D., Kennedy, H., Kröger, S., Lorenzoni, I., Milligan, B., van der Molen, J., Parker, R., Pryce, T., Turner, R. K., and Tyllianakis, E. (2020). Climate action requires new accounting guidance and governance frameworks to manage carbon in shelf seas. *Nat. Commun.*, 11(1), article no. 4599.
- Matthews, H. D., Tokarska, K. B., Rogelj, J., Smith, C. J., MacDougall, A. H., Haustein, K., Mengis, N., Sippel, S., Forster, P. M., and Knutti, R. (2021). An integrated approach to quantifying uncertainties in the remaining carbon budget. *Commun. Earth Environ.*, 2(1), 1–11.
- McNeil, B. I. (2006). Significance of the oceanic CO₂ sink for national carbon accounts. *Carbon Balance Manage.*, 1(1), article no. 5.
- Nabuurs, G.-J., Ciais, P., Grassi, G., Houghton, R. A., and Sohngen, B. (2023). Reporting carbon fluxes from unmanaged forest. *Commun. Earth Environ.*, 4(1), 1–4.
- National Academies of Sciences, Engineering, and Medicine (2022). *A Research Strategy for Ocean-based Carbon Dioxide Removal and Sequestration*. The National Academies Press, Washington, DC.
- Orr, J. C., Najjar, R. G., Aumont, O., Bopp, L., Bullister, J. L., Danabasoglu, G., Doney, S. C., Dunne, J. P., Dutay, J.-C., Graven, H., Griffies, S. M., John, J. G., Joos, F., Levin, I., Lindsay, K., Matear, R. J., McKinley, G. A., Mouchet, A., Oschlies, A., Romanou, A., Schlitzer, R., Tagliabue, A., Tanhua, T., and Yool, A. (2017). Biogeochemical protocols and diagnostics for the CMIP6 ocean model intercomparison project (OMIP). *Geosci. Model Dev.*, 10(6), 2169–2199.
- Pendleton, L., Donato, D. C., Murray, B. C., Crooks, S., Jenkins, W. A., Sifleet, S., Craft, C., Fourqurean, J. W., Kauffman, J. B., Marbà, N., Megonigal, P., Pidgeon, E., Herr, D., Gordon, D., and Baldera, A. (2012). Estimating global “blue carbon” emissions from conversion and degradation of vegetated coastal ecosystems. *PLOS One*, 7(9), article no. e43542.
- Powis, C., Smith, S., Minx, J., and Gasser, T. (2023). Quantifying global carbon dioxide removal deployment. *Environ. Res. Lett.*, 18(2), article no. 024022.
- Regnier, P., Resplandy, L., Najjar, R. G., and Ciais, P. (2022). The land-to-ocean loops of the global carbon cycle. *Nature*, 603(7901), 401–410.
- Resplandy, L., Hogikyan, A., Müller, J. D., Najjar, R. G., Bange, H. W., Bianchi, D., Weber, T., Cai, W.-J., Doney, S. C., Fennel, K., Gehlen, M., Hauck, J., Lacroix, F., Landschützer, P., Le Quéré, C., Roobaert, A., Schwinger, J., Berthet, S., Bopp, L., Chau, T. T. T., Dai, M., Gruber, N., Ilyina, T., Kock, A., Manizza, M., Lachkar, Z., Laruelle, G. G., Liao, E., Lima, I. D., Nissen, C., Rödenbeck, C., Séférian, R., Toyama, K., Tsujino, H., and Regnier, P. (2024). A synthesis of global coastal ocean greenhouse gas fluxes. *Global Biogeochem. Cycles*, 38(1), article no. e2023GB007803.
- Rickels, W., Karstensen, J., Meier, F., Peterson, S., Posern, C., Quaas, M., Grasse, P., Rühland, S., Tube, S., Vafeidis, A., and Wolff, C. (2023). Eco-

- conomic benefit of regional ocean carbon uptake. Project Report. https://doi.org/10.3289/eurosea_d7.5, GEOMAR Helmholtz-Zentrum für Ozeanforschung Kiel, <https://oceanrep.geomar.de/id/eprint/59991/>.
- Rogelj, J., Schaeffer, M., Friedlingstein, P., Gillett, N. P., Vuuren, D. P. V., Riahi, K., Allen, M., and Knutti, R. (2016). Differences between carbon budget estimates unravelled. *Nat. Clim. Change*, 6, 245–252.
- Roobaert, A., Regnier, P., Landschützer, P., and Laruelle, G. G. (2024). A novel sea surface pCO₂-product for the global coastal ocean resolving trends over 1982–2020. *Earth Syst. Sci. Data*, 16(1), 421–441.
- Sala, E., Mayorga, J., Bradley, D., Cabral, R. B., Atwood, T. B., Auber, A., Cheung, W., Costello, C., Ferretti, F., Friedlander, A. M., Gaines, S. D., Garilao, C., Goodell, W., Halpern, B. S., Hinson, A., Kaschner, K., Kesner-Reyes, K., Leprieux, F., McGowan, J., Morgan, L. E., Mouillot, D., Palacios-Abrantes, J., Possingham, H. P., Rechberger, K. D., Worm, B., and Lubchenco, J. (2021). Protecting the global ocean for biodiversity, food and climate. *Nature*, 592(7854), 397–402.
- Tagliabue, A., Twining, B. S., Barrier, N., Maury, O., Berger, M., and Bopp, L. (2023). Ocean iron fertilization may amplify climate change pressures on marine animal biomass for limited climate benefit. *Global Change Biol.*, 29(18), 5250–5260.
- Terhaar, J., Orr, J. C., Gehlen, M., Ethé, C., and Bopp, L. (2019). Model constraints on the anthropogenic carbon budget of the arctic ocean. *Biogeosciences*, 16(11), 2343–2367.
- Tsujino, H., Urakawa, S., Nakano, H., Small, R. J., Kim, W. M., Yeager, S. G., Danabasoglu, G., Suzuki, T., Bamber, J. L., Bentsen, M., Böning, C. W., Bozec, A., Chassignet, E. P., Curchitser, E., Boeira Dias, F., Durack, P. J., Griffies, S. M., Harada, Y., Ilicak, M., Josey, S. A., Kobayashi, C., Kobayashi, S., Komuro, Y., Large, W. G., Le Sommer, J., Marsland, S. J., Masina, S., Scheinert, M., Tomita, H., Valdivieso, M., and Yamazaki, D. (2018). JRA-55 based surface dataset for driving ocean–sea-ice models (JRA55-do). *Ocean Modell.*, 130, 79–139.
- Wanninkhof, R. (1992). Relationship between wind speed and gas exchange over the ocean. *J. Geophys. Res. C*, 97(C5), 7373–7382.