



**HAL**  
open science

## Effect of personalized moderate exercise training on Wistar rats fed with a fructose enriched water

Julie Dupas, Annie Feray, Anthony Guernec, Morgane Pengam, Manon Inizan, François Guerrero, Jacques Mansourati, Christelle Goanvec

► **To cite this version:**

Julie Dupas, Annie Feray, Anthony Guernec, Morgane Pengam, Manon Inizan, et al.. Effect of personalized moderate exercise training on Wistar rats fed with a fructose enriched water. *Nutrition and Metabolism*, 2018, 15 (1), 10.1186/s12986-018-0307-6 . hal-02142986

**HAL Id: hal-02142986**

**<https://hal.univ-brest.fr/hal-02142986>**

Submitted on 17 Jan 2024

**HAL** is a multi-disciplinary open access archive for the deposit and dissemination of scientific research documents, whether they are published or not. The documents may come from teaching and research institutions in France or abroad, or from public or private research centers.


L'archive ouverte pluridisciplinaire **HAL**, est destinée au dépôt et à la diffusion de documents scientifiques de niveau recherche, publiés ou non, émanant des établissements d'enseignement et de recherche français ou étrangers, des laboratoires publics ou privés.

RESEARCH

Open Access



# Effect of personalized moderate exercise training on Wistar rats fed with a fructose enriched water

Julie Dupas<sup>1,5</sup>, Annie Feray<sup>1,3,5</sup>, Anthony Guerne<sup>1,3,5</sup>, Morgane Pengam<sup>1,5</sup>, Manon Inizan<sup>1,2,5</sup>, François Guerrero<sup>1,3,5</sup>, Jacques Mansourati<sup>1,4,5</sup> and Christelle Goanvec<sup>1,2,5\*</sup> 

## Abstract

**Background:** Metabolic Syndrome has become a public health problem. It mainly results from the increased consumption of fat and sugar. In this context, the benefits of personalized moderate exercise training were investigated on a metabolic syndrome male wistar rat model food with fructose drinking water (20–25% w/v). Different markers including body weight, metabolic measurements, blood biochemistry related to metabolic syndrome complications have been evaluated.

**Methods:** Male Wistar rats were randomly allocated to 4 groups: control (sedentary (C,  $n = 8$ ) and exercise trained (Ex,  $n = 8$ )), fructose fed (sedentary (FF,  $n = 8$ ) and exercise trained fructose fed rats (ExFF,  $n = 10$ )). ExFF and Ex rats were trained at moderate intensity during the last 6 weeks of the 12 weeks-long protocol of fructose enriched water. Metabolic control was determined by measuring body weight, fasting blood glucose, HOMA 2-IR, HIRI, MISI, leptin, adiponectin, triglyceridemia and hepatic dysfunction.

**Results:** After 12 weeks of fructose enriched diet, rats displayed on elevated fasting glycaemia and insulin resistance. A reduced food intake, as well as increased body weight, total calorie intake and heart weight were also observed in FF group. Concerning biochemical markers, theoretical creatinine clearance, TG levels and ASAT/ALAT *ratio* were also affected, without hepatic steatosis. Six weeks of 300 min/week of moderate exercise training have significantly improved overweight, fasting glycaemia, HOMA 2-IR, MISI without modify HIRI. Exercise also decreased the plasma levels of leptin, adiponectin and the ratio leptin/adiponectin. Regarding liver function and dyslipidemia, the results were less clear as the effects of exercise and fructose-enriched water interact together, and, sometimes counteract each other.

**Conclusion:** Our results indicated that positive health effects were achieved through a personalized moderate training of 300 min per week (1 h/day and 5 days/week) for 6 weeks. Therefore, regular practice of aerobic physical exercise is an essential triggering factor to attenuate MetS disorders induced by excessive fructose consumption.

**Keywords:** Metabolic syndrome, Fructose enriched water rat model, Aerobic training

## Background

Metabolic syndrome (MetS) is a cluster of different symptoms including, for example insulin resistance (IR), abdominal obesity, dyslipidemia, hypertension [1] and is strongly related to the development of Type 2 Diabetes (T2D) increasing the risk by 5-fold [2]. The fast increase

in MetS prevalence is strongly related to changes of our lifestyle characterized nowadays by reduced physical activities and bad habits in our diet [3]. Particularly, high consumption of sugar [4], specifically fructose used in soft drinks as a common sweetener, contributed to the development of MetS [5].

Although they have not always expressed all signs of the syndrome, as shown by previous studies [6, 7], rats fed this type of diet have been used as an experimental model of human MetS [8]. Especially, fructose overload in drinking water can induce MetS in rats as demonstrated previously

\* Correspondence: [christelle.goanvec@univ-brest.fr](mailto:christelle.goanvec@univ-brest.fr)

<sup>1</sup>EA 4324: Optimisation des Régulations Physiologiques, Université de Bretagne Occidentale, 6 avenue Le Gorgeu, 29238 Brest Cedex 3, France

<sup>2</sup>UFR Sciences et Techniques, Université de Bretagne Occidentale, 6 avenue Le Gorgeu, 29237 Brest Cedex 3, France

Full list of author information is available at the end of the article



[9, 10]. Our group had validated a rat model of MetS without obesity after 21 weeks of fructose overload. This model is close to what happens in human in term of risk and pathology development [11]. Its originality consists in the development of cardiovascular risk factors at early age after consumption of a real-like fructose enriched diet at similar levels to those children could be exposed. Otherwise, we have also shown an overweight after 12 weeks of the same fructose overload [12]. Consequently, new markers must be studied to identify the origin of this overweight. Adipokines are reportedly associated with the risk for MetS, T2D and cardiovascular diseases. Among them, leptin and adiponectin may be risk markers of fat-induced dyslipidemia and IR. Their plasma levels are directly proportional to secretion rates of the adipokine by adipose tissue [13]. Persons at high risk seemingly have high levels of plasma leptin and low levels of plasma adiponectin. Because leptin and adiponectin have opposite effects, the LAR (Leptin/Adiponectin ratio) has been proposed as a better biomarker for IR [14, 15] and MetS diagnosis criteria [16, 17] than leptin and adiponectin separately.

In the context of MetS, non-pharmacological and non-invasive therapeutic benefits, such as exercise training (ET), are becoming increasingly acknowledged. To modify lifestyle and reduce risk factors associated with MetS, ET may be implemented since it has been shown to fight the negative effects of excess fructose intake [18–21]. Indeed, chronic ET, over 4 weeks long [22], has beneficial impact on some cardiovascular risk factors like hyperglycaemia, obesity and hypertension, and is now commonly used in cardiovascular disease primary and secondary prevention [23]. For most adults suffering with diabetes, the updated recommendations of the American Diabetes Association [24] propose doing 150 min or more of moderate-to-vigorous intensity activity weekly, spread over at least 3 days/week, with no more than 2 consecutive days without activity. Training at moderate intensity (50 to 70% of maximal aerobic capacity) seems to be the best compromise between efficiency and feasibility for individual care [25]. Recently, Bird and colleagues (2017) [26] have reported that: “the potential to adapt and improve insulin sensitivity is likely to be influenced by the basal state of the participants: with healthy participants, overweight/obese, prediabetic MetS, and patients with diabetes all likely to differ in the magnitude of adaptation and improvement”. As a consequence, a personalized aerobic moderate ET (70% of maximal aerobic speed (MAS)) of 300 min/week has been chosen. Although the importance of taking gender into account is an evidence, in the present paper, we used only male to avoid estrogen interaction during our investigations of the training effects on MetS [27]. Using our non-obese model of MetS male Wistar rats, this integrative study aimed to evaluate the effects of personalized protocol training on several metabolic

markers of the MetS: body weight, blood biochemistry especially triglyceridemia, glucose homeostasis, IR and hepatic dysfunction.

## Methods

### Animals

All experiments were approved by local French ethical comity (CEFEA, n°74), and authorized by the French “Ministère de l'Éducation Nationale, de l'Enseignement Supérieur et de la Recherche” under the number 2269.

Fifty male Wistar rats (weight < 49 g, Janvier labs, Le Genest Saint Ile, France), were housed individually at the age of three weeks in a light (12 h:12 h light/dark cycle) and temperature ( $21 \text{ }^{\circ}\text{C} \pm 1 \text{ }^{\circ}\text{C}$ ) controlled animal facility. Rats were all fed with a standard diet (Kliba Nafag, M/R Maintenance, 3.152 kcal/g). Rats were randomly assigned to one of the two groups: control rats with tap water (C,  $n = 24$ ) and fructose fed rats (FF,  $n = 26$ ) with fructose (4 kcal/g) enriched drink (20% *w/v* from age 3 weeks to age 9 weeks) for 6 weeks. To test training effect on fructose fed animals, each group of rats was divided in 2 at the age of 9 weeks. We obtained 4 groups: control rats (sedentary (C,  $n = 8$ ) and exercise trained (Ex,  $n = 8$ )) with tap water, fructose fed rats (sedentary (FF,  $n = 8$ ) and exercise trained fructose fed rats (ExFF,  $n = 10$ )) with fructose enriched drink (25% *w/v* from age 10 weeks to age 15 weeks). ExFF and Ex rats were trained at moderate intensity for 6 weeks. The other rats ( $n = 16$ ) were sacrificed at the age of 9 weeks and were used to define our model [12]. Fructose enriched drinks were changed every couple of days; water bottles were sterilized every week. Body weight (bw) was measured weekly. Food, drink and total calorie intakes rat were recorded individually once a week. The consumption was estimated as daily for 100 g of rat. The three parameters were expressed as Area Under the Curve (AUC), calculated by trapezoidal method.

### Personalized moderate exercise protocol

Prior to the moderate exercise protocol, all rats underwent an evaluation of their maximal aerobic speed (MAS). The protocol consisted of an exercise session where the speed was progressively incremented by 3.33 m/min for five minutes and then by 1.6 m/min until rats were unable to run anymore [27, 28]. This last speed was used as their MAS. After the first MAS evaluation, rats were randomly divided into the four groups defined before: sedentary C, FF and trained groups Ex, ExFF. MAS was re-evaluated twice during the training period in order to adapt training intensity and to evaluate exercise efficiency only on trained group to avoid acute effect of MAS on sedentary group. Each trained rats (Ex and ExFF) ran on a treadmill 5 days/week for 1 h at a speed equivalent to  $70 \pm 5\%$  of their MAS, while FF and C remained on the turned-off treadmill.

### Sampling

Rats were anaesthetised with Ketamine (Ketamine 100, Virbac, 80 mg/kg) and Xylazine (Rompun 2%, Bayer, 12 mg/kg) injected intramuscularly (into the left back leg). Blood was collected intraventricularly. Blood was collected into 2 mL sampling tube (pre-coated with EDTA). Plasma was obtained after centrifugation for 15 min at 1000 g. Heart was collected and cleared of residual blood and then weighted. Plasma and organs were immediately frozen in liquid nitrogen and then stored at  $-80^{\circ}\text{C}$  for further analysis.

Heart weight (% bw) was calculated as followed:

$$\text{Heart weight (\%bw)} = \frac{\text{heart weight(g)}}{\text{body weight(g)}} \times 100$$

### Metabolic measurements

After a 15 h without food, fasting glucose was measured in blood collected by a single prick onto the mandibular veins (allowing only one drop to come off) using a glucometer (Accu-Chek Performa, Roche, Meylan, France) [29]. Oral Glucose Tolerance Test (OGTT) was performed at the age of 13 weeks and was described previously [11]. Plasma from OGTT blood sample was obtained after centrifugation at 2000 g for 5 min. Plasma was then frozen and stored at  $-80^{\circ}\text{C}$  before further analysis. Insulin concentration was evaluated on those plasma samples using ELISA methods (Rat Insulin Elisa, ALPCO, Eurobio, Courtaboeuf, France). Glucose and Insulin responses were expressed as AUC, calculated by trapezoidal method, and Net AUC calculated after subtracting the baseline concentration.

Based on OGTT and insulin concentrations results, three indicators of insulin resistance and sensitivity were determined: the Homeostatic Model Assessment for Insulin Resistance (HOMA 2-IR), the Hepatic Insulin Resistance Index (HIRI) and the Muscle Insulin Sensitivity Index (MISI). HOMA 2-IR was calculated using a HOMA 2 IR calculator software [30] (software available at <https://www.dtu.ox.ac.uk/homacalculator>, Oxford University) and using OGTT data, i.e. fasting insulinemia and fasting glycaemia were taken at  $t = 0$  min (before the ingestion of a high dose of glucose (1 g/kg bw)). HIRI is the product of the net AUC for blood glucose multiplied by the net AUC for plasma insulin during the first 30 min of the OGTT. MISI is the rate of blood glucose concentration decay from its peak value to its nadir divided by the mean plasma insulin concentration during the OGTT [31, 32].

Adiponectin and leptin concentrations were evaluated on plasma samples using ELISA methods (Rat Adiponectin Elisa, ALPCO, and "Mouse and Rat Leptin ELISA" BioVendor®, Eurobio, Courtaboeuf, France). The LAR was then calculated.

### Blood biochemistry

Blood chemistry measurements were done on a Koné lab 20 (Thermo Scientific) using adapted kit for: ASpartate AminoTransferase activity (ASAT)(Biomerieux), ALanine AminoTransferase activity (ALAT) (Biomerieux), Creatinine (Jaffé method, Fisher Brahms), Albumin (Bromocresol green method, Biomerieux), Non-Esterified Fatty Acid (NEFA) (Wako), TriGlycerides (TG) (PAP methods, Biomerieux), total cholesterol (Cholesterol RTU, Biomerieux). The ASAT/ALAT ratio was then calculated. Different molar ratios were calculated as a part of the lipids levels evaluation: NEFA to cholesterol ratio [33], NEFA to Albumin ratio [34], and cholesterol to TG ratio [35]. Theoretical creatinine clearance was calculated using the Cockcroft and Gault formula [36], that has been already used in rat model [37].

$$\begin{aligned} \text{Theoretical creatinine clearance} & \left( \frac{\text{mL}}{\text{min}} \right) \\ & = \frac{(140 - \text{age (years)}) * \text{body weight (kg)}}{\left( \text{creatinine} \left( \frac{\text{mg}}{\text{dL}} \right) * 72 \right)} \end{aligned}$$

### Citrate synthase (CS) activity

50 mg of either left ventricle or left soleus were homogenised in a  $4^{\circ}\text{C}$  Tris HCl buffer (0.1 M, pH 8.1) with a Polytron. The homogenate was then collected and used immediately for analysis. Measurements of CS activity were done by an indirect method [28] using 5,5-dithio-bis-2-nitrobenzoic acid (DTNB). CS activity was thus measured at 412 nm (Evolution 201, Thermo-Scientific).

### Hepatic histology

Small portions of the liver were sampled and immediately put in fixative solution (Bouin) for at least 48 h. Samples were then embedded in paraffin and transverse slices of  $5 \mu\text{m}$  were cut and stained by eosin/hematoxylin to detect eventual steatosis. Classification of steatosis evolution was determined as followed: score 0: no lipid droplet, score 1: less than 10 microvesicles of lipid droplets, score 2: more than 10 micro-vesicles lipid droplets, score 3: macro and micro vesicles lipid droplets  $> 30$ , score 4: steatosis.

### Statistics

All results are expressed as means  $\pm$  standard error of mean (SEM). All statistics were performed using Statistica v. 12 software (StatSoft, France). Normality of population was tested using the Shapiro-Wilk test. Adapted tests were then performed (Kruskal-Wallis, Mann and Whitney U test, two-way analyses of variance (ANOVA) and ANOVA for repeated measures). ANOVA were followed by a post-hoc test (HSD for n different). Significant differences ( $p < 0.05$ ) between groups were mentioned by different letters (a, b, c...) in the tables and figures.

## Results

### Personalized moderate exercise protocol

In order to evaluate exercise training efficiency, CS activity levels were measured in both soleus muscle and myocardium of left ventricle as a marker of mitochondrial content in the 4 experimental groups (Table 1). In both tissues, ET increased CS activity ( $p < 0.01$ ) while fructose enriched diet decreased it ( $p < 0.05$ ). There was also an interaction between both of these two factors ( $p < 0.001$ ). The Ex soleus muscles have a higher CS activity than C ( $55.6 \pm 3.3$  vs.  $35.6 \pm 2.7$   $\mu\text{mol}/\text{min}/\text{mg}$  FW), likewise ExFF soleus muscles compared to FF ( $36.6 \pm 1.8$  vs.  $28.1 \pm 1.9$   $\mu\text{mol}/\text{min}/\text{mg}$  FW). Finally, the hearts of Ex rats displayed a greater CS activity than C ( $184.0 \pm 3.4$  vs.  $98.2 \pm 10.2$   $\mu\text{mol}/\text{min}/\text{mg}$  FW).

MAS was measured regularly in trained animals (Ex, ExFF) both to evaluate ET efficiency as well as to normalize individual training. Results are summarized in Table 2. Before the start of the treadmill training, both groups (Ex and ExFF, age: 9 weeks) have similar MAS values:  $31.00 \pm 0.67$  and  $29.50 \pm 0.83$  m/min, respectively. Inside Ex group, MAS increases continuously at the age of 12 and 14 weeks, respectively after 3 and 5 weeks of ET ( $p < 0.001$ ) compared to the previous MAS. It is the same in ExFF group. It can also be noticed that, soon as after 3 weeks of training, Ex displayed a higher MAS than ExFF (Ex:  $41.83 \pm 1.67$  vs. ExFF:  $34.33 \pm 0.67$  m/min,  $p < 0.001$ ). The same conclusion can be drawn after 5 weeks of ET (Ex:  $47.33 \pm 2.00$  vs. ExFF:  $38.67 \pm 0.15$  m/min,  $p < 0.001$ ).

### Morphometric and metabolic measurements

The Fig. 1a displays the body weight evolution of experimental groups. During the six first weeks, the body weight was similar between C and FF. After week 9, training effect was significant ( $p = 0.004$ ) and interaction (fructose effect x training) was observed ( $p < 0.001$ ). Post-Hoc test displayed higher weights in FF group compared with the C group and ExFF group. At 15 weeks (Table 3), larger body weight was observed only in FF group. For the results on heart weight after 15 weeks of the experiment (Table 3), only FF heart weight was bigger than C ( $0.32 \pm 0.010$  vs.  $0.27 \pm 0.02\%$  bw).

Anova 2 analysis of OGTT curves (Fig. 1b) and net glucose AUC (Fig. 1c) at 13 weeks old, showed that the fructose enriched diet had an effect on glucose levels ( $p = 0.031$  and  $p = 0.026$  respectively), and ET have had an analog effect ( $p = 0.043$  and  $p = 0.020$  respectively). Surprisingly, post-hoc test displayed higher net glucose AUC for C group compared to the others ( $p < 0.05$ ).

Insulin levels were measured concomitantly to glucose levels during OGTT. Results are displayed in Fig. 1d and e. Differences could be found between groups both in term of the entire curve ( $p < 0.05$ ) as well as at specific time. Indeed, as a whole, FF had higher insulin levels than C (respectively  $p < 0.01$ ). In a more precise manner, 15 min after the beginning of OGTT, FF have higher insulin levels than the others groups ( $p < 0.001$ ). For net insulin AUC (Fig. 1e) only training induces a decrease ( $p = 0.043$ ).

Table 3 also summarizes morphological and metabolic markers of 15 weeks old rats. Body weight was significantly higher in FF group ( $p < 0.05$ ). Heart weight for FF compared to C was upper ( $p < 0.05$ ). Food intake AUC was significantly lower in FF group compared to C group without modification of drink intake while total calorie intake was increased. Training protocol in ExFF did not changed food, drink and total calorie intakes AUC compared to FF. The fructose enriched diet increased fasting glycaemia ( $p < 0.05$ ). ET reduced fasting glycaemia ( $p < 0.05$ ), moreover, there was no interaction between the effects of diet and exercise. From glucose and insulin levels during OGTT, three markers were calculated: HOMA 2-IR, HIRI and MISI (Table 3). With regard to HOMA 2-IR, it can be noticed that fructose diet increasing it ( $p = 0.027$ ) while ET lowering it ( $p = 0.002$ ). This marker indicates IR for a value higher than 1.85 [38]; only FF group displayed a higher value ( $2.87 \pm 0.43$ ). For HIRI, neither fructose, nor training provided significant impact and only ET increased MISI ( $p > 0.001$ ). Concerning leptin, adiponectin and LAR, fructose displayed no effect and exercise decreased their plasma levels ( $p < 0.01$ ).

### Blood biochemistry

Table 4 shows the results of blood biochemistry analysis. The theoretical creatinine clearance has been studied: this value was modified by both fructose enriched diet and ET (both  $p < 0.05$ ). The other values shown in Table 4 concerning the lipid profile. First, NEFA, total cholesterol and TG were directly measured. Interaction between training and fructose enriched diet displayed a significant effect on total cholesterol level ( $p < 0.001$ ). TG level was only modified by fructose supplementation ( $p = 0.025$ ). Three molar ratios were then calculated: NEFA/Cholesterol, NEFA/Albumin and total cholesterol/TG, results are shown in Table 4. NEFA/Cholesterol and NEFA/Albumin results showed no difference between groups. Using an ANOVA 2, the ratio total

**Table 1** Citrate synthase activity in two different tissues at 15 weeks

	Muscle	C (n = 8)	Ex (n = 8)	FF (n = 8)	ExFF (n = 10)
CS activity ( $\mu\text{mol}/\text{min}/\text{mg}$ FW)	Soleus	$35.6 \pm 2.7a$	$55.6 \pm 3.3b$	$28.1 \pm 1.9 c$	$36.6 \pm 1.8 a$
	Left ventricle	$98.2 \pm 10.2a$	$184.0 \pm 3.4b$	$116.1 \pm 3.4 ac$	$135.4 \pm 4.3 c$

Values are means  $\pm$  SEM in  $\mu\text{mol}/\text{min}/\text{mg}$  of Fresh Weight (FW). For the soleus and the left ventricle, training effect ( $p < 0.01$ ), fructose effect ( $p < 0.05$ ), interaction ( $p < 0.001$ ) were statistically significant. Statistical differences with post-hoc test are observed when lowercase letters (a, b, c) under values are different with  $p < 0.05$



**Table 2** Effect of moderate training on MAS (m/min)

Age	Ex (n = 8)	ExFF (n = 8)	Ex vs ExFF
9 weeks	31.00 ± 0.67 a	29.50 ± 0.83 a	NS
12 weeks	41.83 ± 1.67 b	34.33 ± 0.67 d	p < 0.001
14 weeks	47.33 ± 2.00 c	38.67 ± 0.15 e	p < 0.001

Values are means ± SEM. Statistical differences with post-hoc test are observed between groups. Different lowercase letters (a, b, c, d, e under values) indicate time effect in each experimental group. Difference between groups at each age appears as *p* value. NS: Non Significant

cholesterol/TG was surprisingly decreased by the fructose enriched diet ( $p = 0.04$ ), an interaction between the effects of the diet and ET were also found ( $p = 0.02$ ). Indeed, Ex had a higher total cholesterol/TG ratio than C and ExFF (respectively  $4.27 \pm 0.69$  vs.  $2.06 \pm 0.27$  and  $1.88 \pm 0.55$ ).

### Hepatic histology

The ASAT/ALAT ratio (Fig. 2a) was significantly modified by the fructose enriched diet ( $p = 0.021$ ). An interaction between the diet and ET ( $p < 0.001$ ) was also found by an ANOVA 2 analysis. Indeed ExFF had a higher ASAT/ALAT ratio than both FF and Ex (respectively  $5.47 \pm 0.52$  vs.  $2.72 \pm 0.35$ ,  $p < 0.001$ ;  $5.47 \pm 0.52$  vs.  $2.08 \pm 0.14$ ,  $p < 0.001$ ) but Ex had a lower ratio than C ( $2.08 \pm 0.14$  vs.  $4.11 \pm 0.47$ ,  $p < 0.01$ ). Figures 2b and c suggested the presence of microvesicles of lipid droplets only in the FF group with a score of 2 (about 33% of rat observed). Whatever the group, no steatosis could be observed.

### Discussion

The aim of this study was to evaluate the effects of personalized moderate ET in a rat model of fructose supplementation just after weaning, on various parameters including metabolic measurements and blood biochemistry.

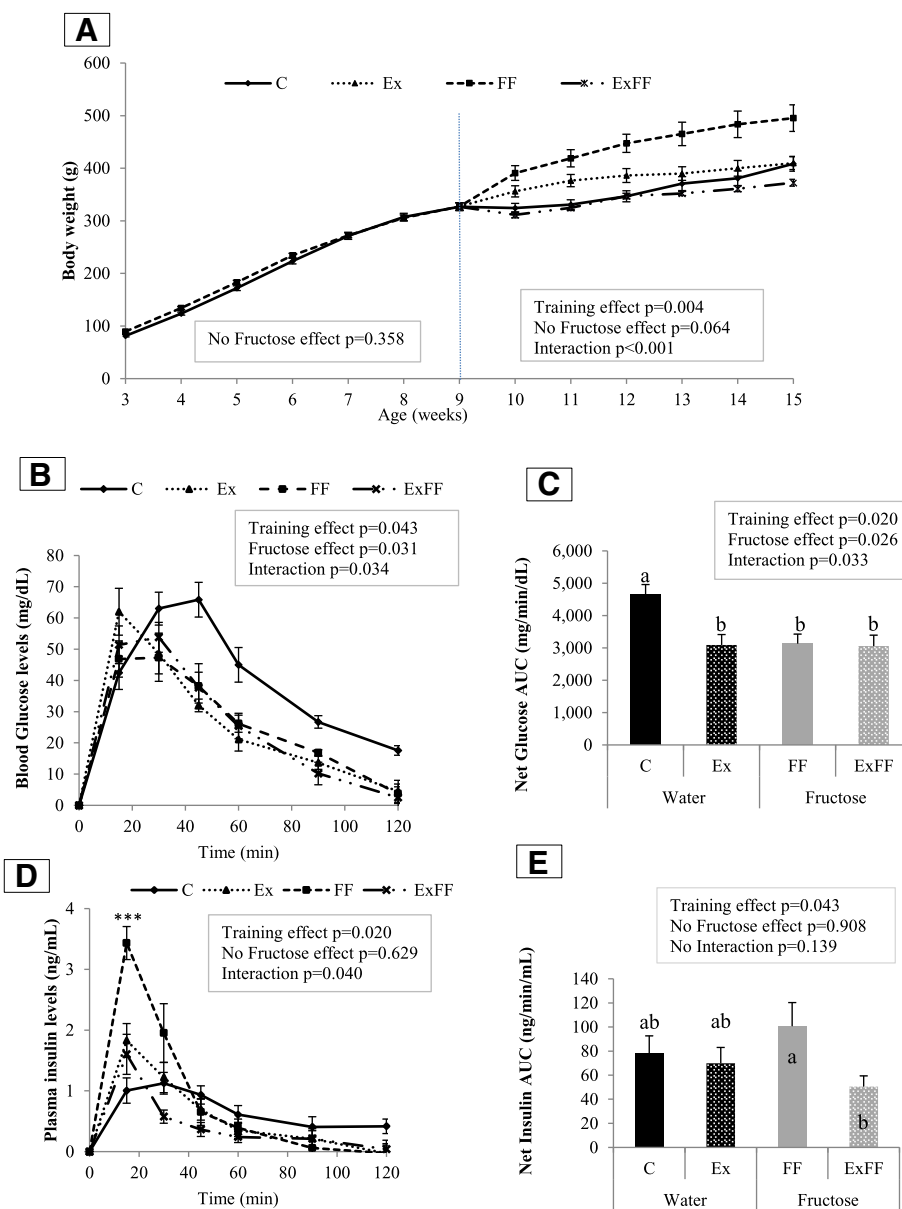
Previous studies have shown that a diet enriched in fructose (20–25% *w/v* in drinking water for 12 weeks) induced early stage of T2D without inducing obesity in Wistar rats [12]. With the same supplementation for 21-week-long, this model induced a MetS without steatosis and not always a T2D and obesity [11]. This study is consistent with our previous findings regarding the fructose enriched diet. Indeed, after 12 weeks of fructose enriched diet, rats developed elevated fasting glycaemia (Table 3) and IR (shown with HOMA 2-IR > 1.85), an increased body weight (provided by increased total calorie intake) and heart weight only in FF group (Table 3). Concerning biochemical markers, theoretical creatinine clearance, TG levels (Table 4) and ASAT/ALAT ratio (Fig. 2a) is also affected, without hepatic steatosis (Fig. 2b, c).

In our study, we first evaluated the efficiency of our personalized ET using the CS activity as a marker of mitochondrial content [28, 39]. For the two muscles studied, the training protocol has improved CS activity.

That is consistent with previous finding [40] and prove the efficiency of our training protocol (Table 1). Furthermore, MAS (Table 2) was enhanced at each measurement, regardless of the diet, another evidence of our training protocol efficiency [28]. It is to notice that performance was more increased in control rats (Ex group: + 52%) than in fructose-supplemented animals (ExFF: + 31%,  $p < 0.001$ ). The effect of personalized moderate ET on our model can thus be fully discussed.

First, MetS markers (fasting glycaemia, HOMA 2-IR, HIRI, MISI as well as OGTT curves, net glucose AUC, plasma insulin levels, net insulin AUC) were studied. ET helps to reduce fasting glycaemia, insulin resistance (HOMA 2-IR lowered below 1.85) and improves muscular insulin sensitivity (MISI) without modify hepatic resistance (HIRI) (Table 3). ET restores the blood glucose levels (in OGTT curves). The concomitantly measured insulin levels showed interesting results (Fig. 1 d). Indeed, ET reduces insulin levels in ExFF group, thus showing the positive impact of exercise on glucose metabolism in MetS rats likewise others authors [19, 20, 41, 42]. About the net glucose AUC, our results are not obvious: training seems to restore Impaired Glucose Tolerance (IGT). Surprisingly, our results looks like C group impaired glucose tolerance. In this paper, net glucose AUC is used (and not total AUC like for Isi-Gly calculator) to determine HIRI and MISI, markers accurately than Isi-Gly to evaluate ET effect. Previously, we have shown a reduced insulin sensitivity (with Isi-gly, a whole body/peripheral insulin sensitivity) in FF group [12] and higher glycaemia at time 0, 15 min for OGTT curves compared to C ( $102.1 \pm 3.1$  vs.  $83.9 \pm 1.6$ , at  $T = 0$  and  $149.0 \pm 7.41$  vs.  $126.3 \pm 6.1$  mg/dL). In our case, by using net glucose AUC for identifying IGT, it becomes possible to bring out AUC of the C group. For that matter, if total AUC is used rather than net AUC (data not shown), only training will improve IGT (reduced total glucose AUC). Consequently, as C, FF, and ExFF group are not statistically different, we propose to invalidate IGT in C group with net glucose AUC. Nonetheless, IGT is not systematically observed in fructose fed model of MetS, and this IGT would be dependent of gender [6], time of regimen [43, 44] and is improve with training [19].

An important point to discuss about MetS markers is the sex differences on the manifestation of MetS. In Sprague–Dawley rats, Sangüesa and colleagues (2018) [45] report that fructose induced hypertriglyceridemia and fatty liver in both sexes, but only females showed IGT and hepatic insulin resistance. Wistar strain rat is less sensitive towards MetS than Sprague–Dawley [12]. Using Wistar, Koricanac and colleagues (2013) [46] have also support the idea of gender-dependent differences in the expression of the metabolic syndrome phenotype with 10% of fructose solution in tap water. In fact,



**Fig. 1** Weight, glucose and insulin tolerance measured during the study. **a** – Body weight evolution for the whole experiment. **c** control ( $n = 24$  for 3 to 9 weeks, and  $n = 8$  for 9 to 15 weeks). Ex: Exercise standard diet ( $n = 8$ ). FF: fructose supplemented ( $n = 26$  for 3 to 9 weeks and  $n = 8$  for 9 to 15 weeks). ExFF: Exercise fructose supplemented ( $n = 10$ ). **b** - Effect of training and fructose supplementation on blood glucose levels during OGTT, 15, 30, 45, 60, 90, 120 min after glucose charge in all groups, after subtracting baseline concentrations at 13 weeks old. **c** - Evolution of net glucose AUC in the four rat groups at 13 weeks old. **d** - Effect of training and fructose supplementation on plasma insulin levels during OGTT after subtracting baseline concentrations at 13 weeks old.\*C compared to FF ( $***p < 0.001$ ). **e** - Evolution of net insulin AUC in the four rat groups at 13 weeks old. For **a, b, c, d, e** figures: groups C: control ( $n = 7$ ). Ex: Exercise standard diet ( $n = 8$ ). FF: fructose supplemented ( $n = 7$ ). ExFF: Exercise fructose supplemented ( $n = 10$ ). Values are means  $\pm$  SEM. For C and E figures, statistical differences with post-hoc test are observed when lowercase letters (**a, b**) are different with  $p < 0.05$

female rats were characterized by decreased glycemia, increased triglycerides, enlarged visceral adipose tissue and increased absolute mass of liver, without changes in systolic blood pressure and insulin sensitivity. In contrast, male rats developed less disturbances in physical and biochemical characteristics, but blood pressure and

insulin sensitivity were impaired by fructose diet. In this paper, working only on male wistar rats makes sense to determine training effect on MetS development avoiding estrogen protector effects [47].

The first 6 weeks of fructose intake, rats are not in overweight. Previous reports showed that the overweight

**Table 3** Effects of training and fructose supplementation on morphological and metabolic characteristics of rats

	C	Ex	FF	ExFF	ANOVA2 or Kruskal Wallis
Body weight at 15 weeks (g)	408.50 ± 14.07 a (n = 8)	409.63 ± 12.14 a (n = 8)	495.25 ± 25.26 b (n = 8)	372.50 ± 6.47 a (n = 10)	Training effect $p = 0.016$
Heart weight (% bw)	0.27 ± 0.02 a (n = 8)	0.30 ± 0.01 ab (n = 8)	0.32 ± 0.01 b (n = 8)	0.29 ± 0.01 ab (n = 10)	Interaction $p = 0.007$
Food intake AUC for 6 weeks (g/day/100 g)	41.26 ± 0.99 a (n = 8)	37.74 ± 1.02 b (n = 8)	30.48 ± 0.73 c (n = 8)	29.53 ± 0.57 c (n = 10)	Training effect $p = 0.02$ Fructose effect $p < 0.001$
Drink intake AUC for 6 weeks (mL/day/100 g)	74.10 ± 3.22 a (n = 8)	54.44 ± 3.90 b (n = 8)	81.14 ± 1.87 a (n = 8)	80.27 ± 3.43 a (n = 10)	Training effect $p = 0.004$ Fructose effect $p < 0.001$ Interaction $p = 0.007$
Total Calorie intake AUC for 6 weeks (kcal/day/100 g)	130.06 ± 3.11 a (n = 8)	118.96 ± 3.21 a (n = 8)	177.20 ± 1.62 b (n = 8)	173.34 ± 3.75 b (n = 10)	Fructose effect $p < 0.001$
Fasting glycaemia (mg/dL)	88.14 ± 3.05 a (n = 7)	77.38 ± 3.41 b (n = 8)	98.29 ± 3.01 a (n = 7)	86.70 ± 2.95 a (n = 10)	Training effect $p = 0.002$ Fructose effect $p = 0.006$
HOMA 2-IR	1.62 ± 0.16 ab (n = 6)	0.74 ± 0.40 a (n = 8)	2.87 ± 0.43 b (n = 7)	1.48 ± 0.34 ab (n = 10)	Training effect $p = 0.002$ Fructose effect $p = 0.027$
HIRI ( $\times 10^4$ )	2.61 ± 0.40 (n = 7)	4.74 ± 0.80 (n = 8)	7.27 ± 1.23 (n = 7)	3.67 ± 0.90 (n = 10)	No effect
MISI	0.50 ± 0.04 ab (n = 7)	0.75 ± 0.11 b (n = 8)	0.34 ± 0.04 a (n = 7)	0.77 ± 0.07 b (n = 10)	Training effect $p < 0.001$
Fasting Leptin (ng/mL)	4.52 ± 0.40 a (n = 6)	1.38 ± 0.18 b (n = 8)	4.20 ± 0.92 a (n = 8)	1.92 ± 0.27 c (n = 9)	Training effect $p < 0.001$
Fasting Adiponectin ( $\mu\text{g/mL}$ )	10.81 ± 0.58 a (n = 8)	8.26 ± 1.06 ab (n = 6)	9.31 ± 0.61 ab (n = 8)	7.79 ± 0.45 b (n = 8)	Training effect $p = 0.005$
Ratio leptin/adiponectin (LAR)	0.46 ± 0.06 a (n = 6)	0.19 ± 0.03 b (n = 6)	0.43 ± 0.07 a (n = 8)	0.27 ± 0.04 ab (n = 8)	Training effect $p = 0.0004$

Values are means ± SEM. The results of ANOVA 2 or Kruskal Wallis were displayed in the extreme right column. Statistical differences with post-hoc test are observed when lowercase letters (a, b, c under values) are different with  $p < 0.05$

is not in the first MetS markers systematically associated to MetS development [11, 12, 43]. In our study, the overweight obtained with twelve weeks of fructose supplemented animal is reduced by ET at a level similar to exercise trained rats with a standard diet, without heart weight and total calorie intake differences (Fig. 1a and Table 3). Moreover, fructose diet caused stimulation of satiety center thereby reducing food intake [9]. Otherwise, higher heart weight FF group compared to control can be associated with a higher systolic blood pressure [48]. In our previous data [11], a similar fructose supplementation induced hypertension that is maintained for 21 weeks. Renal function is often affected in T2D cases [49] and can be linked to higher blood pressure. In this purpose, theoretical creatinine clearance was calculated and surprisingly the fructose enriched diet increased this marker thus indicating a better renal function. More surprisingly, exercise trained animals appear to have a lower renal function as

they display a reduced theoretical creatinine clearance. This result is not consistent with the current knowledge, as plasma protein clearance is known to be increase with ET [50]. However, in our knowledge, no study on the modification of the theoretical creatinine clearance following ET was found. A possible explanation may be that theoretical creatinine clearance formula includes body weight in a position where lowering body weight decreases the clearance value. As exercise trained rats presented lower body weight than sedentary animals, it may explain our observation.

Many studies have concluded that plasma leptin and adiponectin are associated with obesity and MetS, and can be used as diagnostic markers for MetS [51]. The LAR may be useful to identify subjects susceptible to metabolic risk, and may reflect the functionality of adipose tissue [13]. Moreover, the presence of MetS leads to high LAR associated with an increasing number of



**Table 4** Effects of moderate exercise and fructose supplementation on biochemical blood markers

	C	Ex	FF	ExFF	ANOVA2 or Kruskal Wallis
Theoretical creatinine clearance (ml/min)	1.30 ± 0.10 ab (n = 8)	1.14 ± 0.05 a (n = 8)	1.53 ± 0.08 b (n = 8)	1.22 ± 0.04 a (n = 9)	Training effect $p = 0.002$ Fructose effect $p = 0.037$
NEFA (μmol/L)	382.78 ± 32.47 (n = 8)	403.38 ± 41.70 (n = 8)	444.21 ± 26.08 (n = 8)	386.52 ± 25.99 (n = 9)	No effect
Total cholesterol (mg/L)	629.16 ± 35.75 a (n = 8)	851.07 ± 30.83 b (n = 8)	713.97 ± 54.11 ab (n = 8)	599.75 ± 38.93 a (n = 9)	Interaction $p < 0.001$
Triglycerides (mg/L)	769.35 ± 89.67 ab (n = 8)	530.02 ± 72.47 a (n = 8)	941.39 ± 202.35 ab (n = 8)	1058.82 ± 175.57b (n = 9)	Fructose effect $p = 0.025$
NEFA/Cholesterol (molar ratio)	0.24 ± 0.02 (n = 8)	0.18 ± 0.02 (n = 8)	0.23 ± 0.02 (n = 8)	0.26 ± 0.03 (n = 9)	No effect
NEFA/Albumin (molar ratio)	0.73 ± 0.06 (n = 8)	0.72 ± 0.07 (n = 8)	0.87 ± 0.04 (n = 8)	0.66 ± 0.05 (n = 9)	No effect
Cholesterol/Tri-glycerides (molar ratio)	2.06 ± 0.27 a (n = 8)	4.27 ± 0.69 b (n = 8)	2.23 ± 0.43 a (n = 8)	1.88 ± 0.55 a (n = 9)	Fructose effect $p = 0.04$ Interaction $p = 0.02$

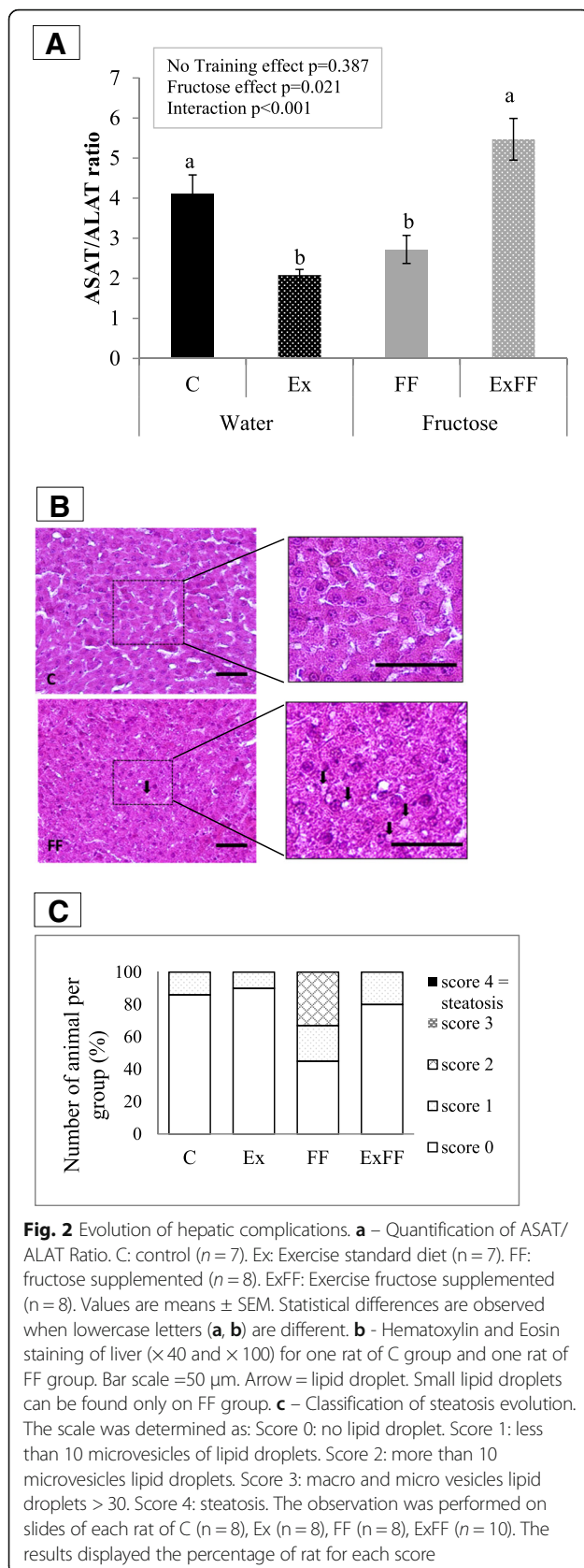
Values are means ± SEM. The results of ANOVA 2 or Kruskal Wallis are displayed in the extreme right column. Statistical differences with post-hoc test are observed when lowercase letters (a, b, under values) are different ( $p < 0.05$ )

MetS components [13, 15]. Frühbeck and colleagues (2017) [52] proposed that LAR performed in humans below 1 is considered as normal, ratio between 1 and 2 is in moderate cardiometabolic risk, and ratio above 2 is in severe cardiometabolic risk. Surprisingly, our study showed no difference between C and FF groups with LAR below 1. Consequently, these rats could be considered “metabolically healthy” or “normal” with a functional adipose tissue. Exercise has been reported to increase and reduce adiponectin and leptin concentrations, respectively, although a different impact may be produced depending on the type of exercise (endurance vs. resistance exercise) [53, 54]. Our personalized moderate endurance protocol shows that LAR is decreased with training about two-fold compared to untrained groups. Clearly, in the context of prevention of MetS, moderate exercise is efficient on LAR and some components of MetS like IR.

Previously, the liver was considered the primary site of sugar metabolism. Jang and colleagues (2018) [55] have shown, in C56BL/6 mice, that fructose at low dietary doses, does not reach the liver; instead, it is converted to glucose and other metabolites in the small intestine. But at higher doses, the intestine can not keep up, leaving the liver and bacteria of the colon to handle with the excess of fructose [55]. It is known that nearly all the ingested fructose is metabolized in the liver, the majority is converted into glucose, while around 15% is converted into glycogen, only a small proportion of which is converted into TG by de novo lipogenesis, usually around 1–5% [56]. However in case of fructose overload, like in our fructose supplemented rats, this percentage can rise up to 10% [57].

Even though dyslipidemia is known to be induced by fructose enriched diet in both human and Sprague-Dawley rats [58, 59], it does not systematically appear in Wistar rats [11, 60]. Neither ET nor fructose supplementation appeared to have an impact on NEFA levels. ET seems to have various effects depending on the diet. In Ex group only, higher total cholesterol is observed and in ExFF group, training does not reduce the TG level, which has increased with fructose-diet. Botzelli and colleagues (2010, 2016) [41, 61] also observed higher TG levels on fructose fed rats whatever length and modalities of training. During moderate intensity, lipids and carbohydrates are the preferential energy sources of muscular cells. In the case of fructose supplemented rats, adaptation to exercise may have promoted fructose oxidation and suppressed its hepatic accumulation [62]. As exercise decreases hepatic accumulation of TG from fructose fed, thus it is increasing circulating lipids availability [61]. An overload of fructose promotes de novo synthesis of TG: in our study, we could suppose that exercise does not reduce this mechanism. These circulating lipids are then used for energy production instead of being stored in the liver or adipose tissue. This idea is be comforted by the observation of Lozano and colleagues (2016) [43]: using similar fructose supplementation as ours, rats did not present increased hepatic TG levels even though their hepatic glycogen levels were higher. We can suppose that the TG stay in the plasma to be available for the metabolism.

Meanwhile, different molar ratios were calculated from the lipids levels results (Table 4). Total cholesterol/TG molar ratio is decreased with the fructose enriched diet and exercise alone improves it. This ratio predicts the



presence of small density LDL both in human [35] and murine models [63]. The lower the ratio is, the higher the presence of small density LDL is and, as a consequence, the higher the cardiovascular risks are [64]. Consequently, if we have no explanation for the upper value of total cholesterol in Ex group compared to C and ExFF, training is in favor of reducing cardiovascular risk factors. We could suggest that our training protocol improve HDL compared to the others groups especially as the total plasma cholesterol is about 80% in HDL particles in rats because of the absence of plasma cholesteryl ester transfer protein [65]. In this paper, all the performed assays were plasmatic ones. We have not performed hepatic and adipose tissue TG measurements. The cholesterol pathway was not evaluated and we have only total cholesterol. Like Bottezelli and colleagues (2016) [41], we found an increase of plasmatic triglyceride in ExFF without modification of total cholesterol. These authors observed an increase of HDL-cholesterol with training. We agree with them when they explain that improvement in liver function or high TG consumption may be due to aerobic exercise. We suppose the HDL cholesterol level is more enhanced with training without fructose fed. NEFA/Albumin is a parameter that indicating cardiovascular risks, particularly less coronary heart disease risk [34] in trained animals. In our study, no difference was found between the groups. According to these markers, moderate exercise is beneficial for the cardiovascular system whereas fructose enriched diet increased cardiovascular risks, even if moderate training was performed.

In order to study MetS markers often associated with T2D, such as liver dysfunction and dyslipidemia, further blood biochemistry analyses were performed (Table 4 and Fig. 2). Cutoff of NEFA (0.566 mM) is never joined in the four groups. The NEFA/cholesterol molar ratio, another indicator of a liver dysfunction [11, 12], is not modified by the experiments. This suggests there is no hepatic lipodosis that was confirmed by no steatosis, considered as the hepatic manifestation of the MetS. Hepatic steatosis is commonly diagnosed when 5% of hepatocytes contain large lipid droplets or when intrahepatic TG content is superior to 5.6%, but the definition of normal liver fat content depends on the assessment method [66]. In an other hand, blood marker of liver function can be the ASAT/ALAT ratio. A higher ASAT/ALAT ratio may, indeed, indicates a liver dysfunction [67]. Fructose enriched diet increase ASAT/ALAT ratio, however both the diet and the ET interact together. Indeed, in fructose fed rats, ET increases the ASAT/ALAT ratio whereas in healthy rat exercise decreases it. No study on this ratio was found on exercise trained rats however it is known that ET induces mainly higher ASAT levels [68] and sometimes ALAT level [69] in

human. The increase is more intense just after exercise, ALAT levels are normalized in 48 h hours whereas ASAT levels are in 9 days [69]. This regulation period may be longer in fructose fed rats in which metabolism is modified as it induced MetS markers [12]. However no study on the regulation of ASAT levels in T2D rats was found and this hypothesis can thus not be confirmed.

## Conclusion

The present study examined the influence of ET on MetS markers. After 6 weeks, ET fought the negative effects of fructose-enriched diet. Our data provided evidences that ET reduced body weight in fructose fed rats and improved glucose metabolism. Indeed, hyperglycaemia and IR were reduced by enhancement of insulin muscular sensitivity. It was very likely that ET contributed to diminish the fructose fed adipose tissue dysfunction. Nevertheless, it is possible that the excess of TG de novo synthesis induced by fructose could not be counterbalanced by ET and would contribute to maintain hypertriglyceridemia. Machado and colleagues (2017) [70] recently proposed that frequency and duration of aerobic exercise are determinant factors for the reversal of metabolic disorders in the experimental model of MetS induced by fructose diet. Our results indicated that positive health effects were achieved through a personalized moderate training of 300 min per week (1 h/ day and 5 days a week) for 6 weeks. So, it is reasonable to assume that duration of our personalized training (6 weeks) must be higher to accentuate the positive effects of ET.

## Abbreviations

ALAT: Alanine aminotransferase activity; ASAT: Aspartate aminotransferase activity; AUC: Area Under the Curve; Bw: body weight; CS: Citrate Synthase; ET: exercise training; FW: Fresh Weight; HDL: High Density Lipoprotein; HIRI: Hepatic Insulin Resistance Index; HOMA 2-IR: Homeostatic Model Assessment 2 for Insulin Resistance; IGT: Impaired Glucose tolerance; IR: insulin resistance; LAR: Leptin/Adiponectin ratio; LDL: Low Density Lipoprotein; MAS: maximal aerobic speed; MetS: Metabolic Syndrome; MISI: Muscle Insulin Sensitivity Index; NEFA: Non-esterified fatty acid; NS: Non Significant; OGTT: Oral Glucose Tolerance Test; SEM: standard error of mean; T2D: Type 2 Diabetes; TG: triglycerides

## Acknowledgements

This study was partially funded by a research grant from the Federation Française de Cardiologie. Authors wish to acknowledge Nathalie GUEGUENIAT<sup>1</sup>, Jean L'HEGARET<sup>1</sup>, Stéphane VIELLEDENT<sup>3</sup> and Charline ALAIN<sup>1</sup> for the help they gave us in this project.

## Availability of data and materials

The datasets used and/or analysed during the current study are available from the corresponding author on reasonable request.

## Authors' contributions

CG, JD, AF, AG designed and performed the experiments, analyzed and interpreted the data and wrote the manuscript. MP and MI helped to performed some experiments. CG, JD and AF were responsible for conducting and monitoring the experiments. CG, AF, AG, FG and JM supervised the research and reviewed the manuscript throughout the study. All authors read and approved the final manuscript.

## Ethics approval and consent to participate

All experiments on rats were approved by local French ethical comity (CEFEA, n°74), and authorized by the French "Ministère de l'Éducation Nationale, de l'Enseignement Supérieur et de la Recherche" under the number 2269. This manuscript does not report on or involve the use of human data or tissue.

## Consent for publication

Not applicable.

## Competing interests

The authors declare that they have no competing interests.

## Publisher's Note

Springer Nature remains neutral with regard to jurisdictional claims in published maps and institutional affiliations.

## Author details

<sup>1</sup>EA 4324: Optimisation des Régulations Physiologiques, Université de Bretagne Occidentale, 6 avenue Le Gorgeu, 29238 Brest Cedex 3, France. <sup>2</sup>UFR Sciences et Techniques, Université de Bretagne Occidentale, 6 avenue Le Gorgeu, 29237 Brest Cedex 3, France. <sup>3</sup>UFR Sciences du Sport et de l'Éducation, 20 avenue Le Gorgeu, 29238 Brest Cedex 3, France. <sup>4</sup>Département de Cardiologie, Centre Hospitalo-Universitaire de Brest, Boulevard Tanguy Prigent, 29200 Brest, France. <sup>5</sup>IBSAM: Institut Brestois Santé Agro Matière, UFR Médecine, avenue Camille Desmoulin, 29200 Brest, France.

Received: 20 July 2018 Accepted: 24 September 2018

Published online: 03 October 2018

## References

- Alberti KGMM, Eckel RH, Grundy SM, Zimmet PZ, Cleeman JI, Donato KA, et al. Harmonizing the metabolic syndrome: a joint interim statement of the international diabetes federation task force on epidemiology and prevention; National Heart, Lung, and Blood Institute; American Heart Association; world heart federation; international atherosclerosis society; and International Association for the Study of obesity. *Circulation*. 2009;120:1640–5. <https://doi.org/10.1161/CIRCULATIONAHA.109.192644>.
- O'Neill S, O'Driscoll L. Metabolic syndrome: a closer look at the growing epidemic and its associated pathologies. *Obes Rev*. 2015;16:1–12. <https://doi.org/10.1111/obr.12229>.
- Whiting DR, Guariguata L, Weil C, Shaw J. IDF diabetes atlas: global estimates of the prevalence of diabetes for 2011 and 2030. *Diabetes Res Clin Pract*. 2011;94:311–21. <https://doi.org/10.1016/j.diabres.2011.10.029>.
- Malik VS, Popkin BM, Bray GA, Després J-P, Willett WC, Hu FB. Sugar-sweetened beverages and risk of metabolic syndrome and type 2 diabetes: a meta-analysis. *Diabetes Care*. 2010;33:2477–83. <https://doi.org/10.2337/dc10-1079>.
- Tappy L. Q&a: "toxic" effects of sugar: should we be afraid of fructose? *BMC Biol*. 2012;10:42. <https://doi.org/10.1186/1741-7007-10-42>.
- Vilà L, Roglans N, Perna V, Sánchez RM, Vázquez-Carrera M, Alegret M, et al. Liver AMP/ATP ratio and fructokinase expression are related to gender differences in AMPK activity and glucose intolerance in rats ingesting liquid fructose. *J Nutr Biochem*. 2011;22:741–51. <https://doi.org/10.1016/j.jnutbio.2010.06.005>.
- Aydin S, Aksoy A, Aydin S, Kalayci M, Yilmaz M, Kuloglu T, et al. Today's and yesterday's of pathophysiology: biochemistry of metabolic syndrome and animal models. *Nutrition*. 2014;30:1–9. <https://doi.org/10.1016/j.nut.2013.05.013>.
- Cambri LT, Ghezzi AC, Arsa G, Botzelli JD, de Mello M a R. Standard short-term diet ameliorates the lipid profile altered by a fructose-rich diet in rats. *J Dev Orig Health Dis*. 2015;6:335–41. <https://doi.org/10.1017/S2040174415001026>.
- Mamikutty N, Thent ZC, Sapri SR, Sahrudin NN, Mohd Yusof MR, Haji Suhaimi F. The establishment of metabolic syndrome model by induction of fructose drinking water in male Wistar rats. *Biomed Res Int*. 2014;2014:263897. <https://doi.org/10.1155/2014/263897>.
- Mamikutty N, Thent ZC, Haji Suhaimi F. Fructose-drinking water induced nonalcoholic fatty liver disease and ultrastructural alteration of hepatocyte mitochondria in male Wistar rat. *Biomed Res Int* 2015;2015: 895961. doi: <https://doi.org/10.1155/2015/895961>.
- Dupas J, Feray A, Goanvec C, Guernec A, Samson N, Bougaran P, et al. Metabolic syndrome and hypertension resulting from fructose enriched diet in Wistar rats. *Biomed Res Int*. 2017;2017:2494067. <https://doi.org/10.1155/2017/2494067>.

12. Dupas J, Goanvec C, Feray A, Guernec A, Alain C, Guerrero F, et al. Progressive induction of type 2 diabetes: effects of a reality-like fructose enriched diet in young Wistar rats. *PLoS One*. 2016;11:e0146821. <https://doi.org/10.1371/journal.pone.0146821>.
13. Vega GL, Grundy SM. Metabolic risk susceptibility in men is partially related to adiponectin/leptin ratio. *J Obes*. 2013;2013:409679. <https://doi.org/10.1155/2013/409679>.
14. Inoue M, Maehata E, Yano M, Taniyama M, Suzuki S. Correlation between the adiponectin-leptin ratio and parameters of insulin resistance in patients with type 2 diabetes. *Metabolism*. 2005;54:281–6. <https://doi.org/10.1016/j.metabol.2004.09.006>.
15. Jung C-H, Rhee E-J, Choi J-H, Bae J-C, Yoo S-H, Kim W-J, et al. The relationship of adiponectin/leptin ratio with homeostasis model assessment insulin resistance index and metabolic syndrome in apparently healthy Korean male adults. *Korean Diabetes J*. 2010;34:237–43. <https://doi.org/10.4093/kdj.2010.34.4.237>.
16. López-Jaramillo P, Gómez-Arbeláez D, López-López J, López-López C, Martínez-Ortega J, Gómez-Rodríguez A, et al. The role of leptin/adiponectin ratio in metabolic syndrome and diabetes. *Horm Mol Biol Clin Investig*. 2014;18:37–45. <https://doi.org/10.1515/hmbci-2013-0053>.
17. Falahi E, Khalkhali Rad AH, Roosta S. What is the best biomarker for metabolic syndrome diagnosis? *Diabetes Metab Syndr*. 2015;9:366–72. <https://doi.org/10.1016/j.dsx.2013.06.014>.
18. Egli L, Lecoultre V, Theytaz F, Campos V, Hodson L, Schneider P, et al. Exercise prevents fructose-induced hypertriglyceridemia in healthy young subjects. *Diabetes*. 2013;62:2259–65. <https://doi.org/10.2337/db12-1651>.
19. Farah D, Nunes J, Sartori M, Dias D da S, Sirvente R, Silva MB, et al. Exercise training prevents cardiovascular derangements induced by fructose overload in developing rats. *PLoS One*. 2016;11:e0167291. <https://doi.org/10.1371/journal.pone.0167291>.
20. Bidwell AJ. Chronic fructose ingestion as a major health concern: is a sedentary lifestyle making it worse? A review. *Nutrients*. 2017;9:549. <https://doi.org/10.3390/nu9060549>.
21. Pereira RM, Botezelli JD, da Cruz Rodrigues KC, Mekary RA, Cintra DE, Pauli JR, et al. Fructose consumption in the development of obesity and the effects of different protocols of physical exercise on the hepatic metabolism. *Nutrients*. 2017;9. <https://doi.org/10.3390/nu9040405>.
22. Spier SA, Laughlin MH, Delp MD. Effects of acute and chronic exercise on vasoconstrictor responsiveness of rat abdominal aorta. *J Appl Physiol*. 1999; 87:1752–7.
23. Metkus TS, Baughman KL, Thompson PD. Exercise prescription and primary prevention of cardiovascular disease. *Circulation*. 2010;121:2601–4. <https://doi.org/10.1161/CIRCULATIONAHA.109.903377>.
24. Colberg SR, Sigal RJ, Yardley JE, Riddell MC, Dunstan DW, Dempsey PC, et al. Physical activity/exercise and diabetes: a position statement of the American Diabetes Association. *Diabetes Care*. 2016;39:2065–79. <https://doi.org/10.2337/dc16-1728>.
25. Goto C, Higashi Y, Kimura M, Noma K, Hara K, Nakagawa K, et al. Effect of different intensities of exercise on endothelium-dependent vasodilation in humans: role of endothelium-dependent nitric oxide and oxidative stress. *Circulation*. 2003;108:530–5. <https://doi.org/10.1161/01.CIR.0000080893.55729.28>.
26. Bird SR, Hawley JA. Update on the effects of physical activity on insulin sensitivity in humans. *BMJ Open Sport Exerc Med*. 2017;2:e000143. <https://doi.org/10.1136/bmjsem-2016-000143>.
27. Farhat F, Amérand A, Simon B, Guegueniat N, Moisan C. Gender-dependent differences of mitochondrial function and oxidative stress in rat skeletal muscle at rest and after exercise training. *Redox Rep Commun Free Radic Res*. 2017;22:508–14. <https://doi.org/10.1080/13510002.2017.1296637>.
28. Farhat F, Dupas J, Amérand A, Goanvec C, Feray A, Simon B, et al. Effect of exercise training on oxidative stress and mitochondrial function in rat heart and gastrocnemius muscle. *Redox Rep*. 2015;20:60–8. <https://doi.org/10.1179/1351000214Y.0000000105>.
29. Bettaieb A, Vazquez Prieto MA, Rodríguez Lanzi C, Miatello RM, Haj FG, Fraga CG, et al. (–)-Epicatechin mitigates high-fructose-associated insulin resistance by modulating redox signaling and endoplasmic reticulum stress. *Free Radic Biol Med*. 2014;72:247–56. <https://doi.org/10.1016/j.freeradbiomed.2014.04.011>.
30. Matthews DR, Hosker JP, Rudenski AS, Naylor BA, Treacher DF, Turner RC. Homeostasis model assessment: insulin resistance and beta-cell function from fasting plasma glucose and insulin concentrations in man. *Diabetologia*. 1985;28:412–9.
31. Abdul-Ghani MA, Matsuda M, Balas B, DeFronzo RA. Muscle and liver insulin resistance indexes derived from the Oral glucose tolerance test. *Diabetes Care*. 2007;30:89–94. <https://doi.org/10.2337/dc06-1519>.
32. Caillaud K, Boisseau N, Ennequin G, Chavanelle V, Etienne M, Li X, et al. Neuregulin 1 improves glucose tolerance in adult and old rats. *Diabetes Metab*. 2016;42:96–104. <https://doi.org/10.1016/j.diabet.2015.08.003>.
33. Ndlovu T, Chimonyo M, Okoh AI, Muchenje V, Dzama K, Raats JG. Assessing the nutritional status of beef cattle: current practices and future prospects. *Afr J Biotechnol*. 2007;6:2727–34. <https://doi.org/10.5897/AJB2007.000-2436>.
34. Pickart L. Increased ratio of plasma free fatty acids to albumin during normal aging and in patients with coronary heart disease. *Atherosclerosis*. 1983;46:21–8. [https://doi.org/10.1016/0021-9150\(83\)90160-0](https://doi.org/10.1016/0021-9150(83)90160-0).
35. Yoshida A, Kowaki M, Matsutani Y, Fukuchi Y, Naito M. Usefulness of serum total cholesterol/triglyceride ratio for predicting the presence of small, dense LDL. *J Atheroscler Thromb*. 2004;11:215–9.
36. Cockcroft DW, Gault MH. Prediction of creatinine clearance from serum creatinine. *Nephron*. 1976;16:31–41.
37. Yuan G, Deng J, Wang T, Zhao C, Xu X, Wang P, et al. Tissue Kallikrein reverses insulin resistance and attenuates nephropathy in diabetic rats by activation of PI3 kinase/Akt and AMPK signaling pathways. *Endocrinology*. 2007;148:2016–26. <https://doi.org/10.1210/en.2006-0602>.
38. Gayoso-Diz P, Otero-González A, Rodríguez-Alvarez MX, Gude F, García F, Francisco AD, et al. Insulin resistance (HOMA-IR) cut-off values and the metabolic syndrome in a general adult population: effect of gender and age: EPIRCE cross-sectional study. *BMC Endocr Disord*. 2013;13:47. <https://doi.org/10.1186/1472-6823-13-47>.
39. Ramos-Filho D, Chicaybam G, de-Souza-Ferreira E, Guerra Martinez C, Kurtenbach E, Casimiro-Lopes G, et al. High intensity interval training (HIIT) induces specific changes in respiration and Electron leakage in the mitochondria of different rat skeletal muscles. *PLoS One*. 2015;10:e0131766. <https://doi.org/10.1371/journal.pone.0131766>.
40. Siu PM, Donley DA, Bryner RW, Alway SE. Citrate synthase expression and enzyme activity after endurance training in cardiac and skeletal muscles. *J Appl Physiol*. 2003;94:555–60. <https://doi.org/10.1152/jappphysiol.00821.2002>.
41. Botezelli JD, Coope A, Ghezzi AC, Cambri LT, Moura LP, Scariot PPM, et al. Strength training prevents hyperinsulinemia, insulin resistance, and inflammation independent of weight loss in fructose-fed animals. *Sci Rep*. 2016;6:31106. <https://doi.org/10.1038/srep31106>.
42. Frantz EDC, Medeiros RF, Giori IG, Lima JBS, Bento-Bernardes T, Gaique TG, et al. Exercise training modulates the hepatic renin-angiotensin system in fructose-fed rats. *Exp Physiol*. 2017. <https://doi.org/10.1113/EP085924>.
43. Lozano I, Van der Werf R, Bietiger W, Seyfritz E, Peronet C, Pinget M, et al. High-fructose and high-fat diet-induced disorders in rats: impact on diabetes risk, hepatic and vascular complications. *Nutr Metab*. 2016;13:15. <https://doi.org/10.1186/s12986-016-0074-1>.
44. Ramos-Romero S, Hereu M, Atienza L, Casas J, Jáuregui O, Amézqueta S, et al. Mechanistically different effects of fat and sugar on insulin resistance, hypertension, and gut microbiota in rats. *Am J Physiol-Endocrinol Metab*. 2018;314:E552–63. <https://doi.org/10.1152/ajpendo.00323.2017>.
45. Sangüesa G, Montañés JC, Baena M, Sánchez RM, Roglans N, Alegret M, et al. Chronic fructose intake does not induce liver steatosis and inflammation in female Sprague-Dawley rats, but causes hypertriglyceridemia related to decreased VLDL receptor expression. *Eur J Nutr*. 2018. <https://doi.org/10.1007/s00394-018-1654-9>.
46. Koricanac G, Djordjevic A, Zakula Z, Vojnovic-Milutinovic D, Tepavcevic S, Velickovic N, et al. Gender modulates development of the metabolic syndrome phenotype in fructose-fed rats. *Arch Biol Sci*. 2013;65:455–64. <https://doi.org/10.2298/ABS1302455K>.
47. Bundalo M, Romić S, Tepavcevic S, Stojiljkovic M, Stankovic A, Zivkovic M, et al. Fructose-rich diet and insulin action in female rat heart: estradiol friend or foe? *Eur J Pharmacol*. 2017;811:141–7. <https://doi.org/10.1016/j.ejphar.2017.06.003>.
48. Doggrel SA, Brown L. Rat models of hypertension, cardiac hypertrophy and failure. *Cardiovasc Res*. 1998;39:89–105. [https://doi.org/10.1016/S0008-6363\(98\)00076-5](https://doi.org/10.1016/S0008-6363(98)00076-5).
49. Ritz E, Rychlík I, Locatelli F, Halimi S. End-stage renal failure in type 2 diabetes: a medical catastrophe of worldwide dimensions. *Am J Kidney Dis*. 1999;34:795–808. [https://doi.org/10.1016/S0272-6386\(99\)70035-1](https://doi.org/10.1016/S0272-6386(99)70035-1).
50. Poortmans JR. Exercise and renal function. *Sports Med Auckl NZ*. 1984;1: 125–53.



51. Chen VC-H, Chen C-H, Chiu Y-H, Lin T-Y, Li F-C, Lu M-L. Leptin/adiponectin ratio as a potential biomarker for metabolic syndrome in patients with schizophrenia. *Psychoneuroendocrinology*. 2018;92:34–40. <https://doi.org/10.1016/j.psyneuen.2018.03.021>.
52. Frühbeck G, Catalán V, Rodríguez A, Gómez-Ambrosi J. Adiponectin-leptin ratio: a promising index to estimate adipose tissue dysfunction. Relation with obesity-associated cardiometabolic risk. *Adipocyte*. 2018;7:57–62. <https://doi.org/10.1080/21623945.2017.1402151>.
53. Simpson KA, Singh MAF. Effects of exercise on adiponectin: a systematic review. *Obes Silver Spring Md*. 2008;16:241–56. <https://doi.org/10.1038/oby.2007.53>.
54. Görgens SW, Eckardt K, Jensen J, Drevon CA, Eckel J. Exercise and regulation of Adipokine and Myokine production. *Prog Mol Biol Transl Sci*. 2015;135: 313–36. <https://doi.org/10.1016/bs.pmbts.2015.07.002>.
55. Jang C, Hui S, Lu W, Cowan AJ, Morscher RJ, Lee G, et al. The small intestine converts dietary fructose into glucose and organic acids. *Cell Metab*. 2018; 27:351–361.e3. <https://doi.org/10.1016/j.cmet.2017.12.016>.
56. Rippe JM, Marcos A. Controversies about sugars consumption: state of the science. *Eur J Nutr*. 2016. <https://doi.org/10.1007/s00394-016-1227-8>.
57. Tran LT, Yuen VG, McNeill JH. The fructose-fed rat: a review on the mechanisms of fructose-induced insulin resistance and hypertension. *Mol Cell Biochem*. 2009;332:145–59. <https://doi.org/10.1007/s11010-009-0184-4>.
58. Tappy L, Lê K-A. Metabolic effects of fructose and the worldwide increase in obesity. *Physiol Rev*. 2010;90:23–46. <https://doi.org/10.1152/physrev.00019.2009>.
59. Elliott SS, Keim NL, Stern JS, Teff K, Havel PJ. Fructose, weight gain, and the insulin resistance syndrome. *Am J Clin Nutr*. 2002;76:911–22.
60. Basciano H, Federico L, Adeli K. Fructose, insulin resistance, and metabolic dyslipidemia. *Nutr Metab*. 2005;2:5. <https://doi.org/10.1186/1743-7075-2-5>.
61. Botezelli JD, Mora RF, Dalia RA, Moura LP, Cambri LT, Ghezzi AC, et al. Exercise counteracts fatty liver disease in rats fed on fructose-rich diet. *Lipids Health Dis*. 2010;9:116. <https://doi.org/10.1186/1476-511X-9-116>.
62. Egli L, Lecoultre V, Cros J, Rosset R, Marques A-S, Schneiter P, et al. Exercise performed immediately after fructose ingestion enhances fructose oxidation and suppresses fructose storage. *Am J Clin Nutr*. 2016;103:348–55. <https://doi.org/10.3945/ajcn.115.116988>.
63. González-Torres L, Vázquez-Velasco M, Olivero-David R, Bastida S, Benedí J, González RR, et al. Glucosaminan and glucosaminan plus spirulina added to pork significantly block dietary cholesterol effects on lipoproteinemia, arylesterase activity, and CYP7A1 expression in Zucker fa/fa rats. *J Physiol Biochem*. 2015;71:773–84. <https://doi.org/10.1007/s13105-015-0441-9>.
64. Lamarche B, Lemieux I, Després JP. The small, dense LDL phenotype and the risk of coronary heart disease: epidemiology, patho-physiology and therapeutic aspects. *Diabetes Metab*. 1999;25:199–211.
65. Xiangdong L, Yuanwu L, Hua Z, Liming R, Qiuyan L, Ning L. Animal models for the atherosclerosis research: a review. *Protein Cell*. 2011;2:189–201. <https://doi.org/10.1007/s13238-011-1016-3>.
66. Ter Horst KW, Serlie MJ. Fructose consumption, lipogenesis, and non-alcoholic fatty liver disease. *Nutrients*. 2017;9. <https://doi.org/10.3390/nu9090981>.
67. Wallerstedt S, Olsson R, Waldenström J. The diagnostic significance of a high Asat/Alat (got/Gpt) ratio in patients with very high serum aminotransferase levels. *Acta Med Scand*. 1974;195:227–9. <https://doi.org/10.1111/j.0954-6820.1974.tb08127.x>.
68. Dufour DR, Lott JA, Nolte FS, Gretch DR, Koff RS, Seeff LB. Diagnosis and monitoring of hepatic injury. I. Performance characteristics of laboratory tests. *Clin Chem*. 2000;46:2027–49.
69. Wu H-J, Chen K-T, Shee B-W, Chang H-C, Huang Y-J, Yang R-S. Effects of 24 h ultra-marathon on biochemical and hematological parameters. *World J Gastroenterol*. 2004;10:2711–4.
70. Machado MV, Vieira AB, da Conceição FG, Nascimento AR, da Nóbrega ACL, Tibirica E. Exercise training dose differentially alters muscle and heart capillary density and metabolic functions in an obese rat with metabolic syndrome. *Exp Physiol*. 2017;102:1716–28. <https://doi.org/10.1113/EP086416>.

**Ready to submit your research? Choose BMC and benefit from:**

- fast, convenient online submission
- thorough peer review by experienced researchers in your field
- rapid publication on acceptance
- support for research data, including large and complex data types
- gold Open Access which fosters wider collaboration and increased citations
- maximum visibility for your research: over 100M website views per year

**At BMC, research is always in progress.**

Learn more [biomedcentral.com/submissions](https://biomedcentral.com/submissions)

