



**HAL**  
open science

## Changes in the trophic structure, abundance and species diversity of exploited fish assemblages in the artisanal fisheries of the northern coast, Senegal, West Africa

I Ndour, François Le Loc'h, Justin Kantoussan, Modou Thiaw, Hamet Diadhiou, Jean-Marc Ecoutin, Luis Tito de Morais, Omat Thiom Thiaw

### ► To cite this version:

I Ndour, François Le Loc'h, Justin Kantoussan, Modou Thiaw, Hamet Diadhiou, et al.. Changes in the trophic structure, abundance and species diversity of exploited fish assemblages in the artisanal fisheries of the northern coast, Senegal, West Africa. *African Journal of Marine Science*, 2014, 36 (3), pp.361-368. 10.2989/1814232X.2014.950696 . hal-01103160

**HAL Id: hal-01103160**

**<https://hal.univ-brest.fr/hal-01103160>**

Submitted on 11 Mar 2024

**HAL** is a multi-disciplinary open access archive for the deposit and dissemination of scientific research documents, whether they are published or not. The documents may come from teaching and research institutions in France or abroad, or from public or private research centers.

L'archive ouverte pluridisciplinaire **HAL**, est destinée au dépôt et à la diffusion de documents scientifiques de niveau recherche, publiés ou non, émanant des établissements d'enseignement et de recherche français ou étrangers, des laboratoires publics ou privés.



**Changes in the trophic structure, abundance and species diversity of exploited fish assemblages in the artisanal fisheries of the northern coast, Senegal, West Africa**

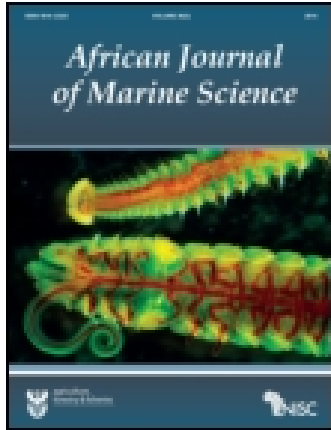
|               |   |
|---------------|---|
| Item Type     | Journal Contribution  |
| Authors       | Ndour, Ismaila  |
| Rights        | Attribution-NonCommercial-NoDerivatives 4.0 International   |
| Download date | 11/03/2024 10:25:59   |
| Item License  | <a href="http://creativecommons.org/licenses/by-nc-nd/4.0/">http://creativecommons.org/licenses/by-nc-nd/4.0/</a> |
| Link to Item  | <a href="http://hdl.handle.net/1834/41423">http://hdl.handle.net/1834/41423</a>                                   |

This article was downloaded by: [41.82.139.87]

On: 12 November 2014, At: 07:17

Publisher: Taylor & Francis

Informa Ltd Registered in England and Wales Registered Number: 1072954 Registered office: Mortimer House, 37-41 Mortimer Street, London W1T 3JH, UK



## African Journal of Marine Science

Publication details, including instructions for authors and subscription information:

<http://www.tandfonline.com/loi/tams20>

### Changes in the trophic structure, abundance and species diversity of exploited fish assemblages in the artisanal fisheries of the northern coast, Senegal, West Africa

I Ndour<sup>abc</sup>, F Le Loc'h<sup>b</sup>, J Kantoussan<sup>d</sup>, M Thiaw<sup>a</sup>, HD Diadhiou<sup>a</sup>, JM Ecoutin<sup>e</sup>, L Tito de Morais<sup>b</sup> & OT Thiaw<sup>c</sup>

<sup>a</sup> Institut Sénégalais de Recherches Agricoles [ISRA]/Centre de Recherche Océanographique de Dakar-Thiaroye [CRODT], Pôle de Recherche de Hann, Dakar, Sénégal

<sup>b</sup> Institut de Recherche pour le Développement [IRD], Laboratoire des sciences de l'Environnement Marin [UMR 6539 LEMAR] (Centre national de la recherche scientifique [CNRS]/Université de Bretagne Occidentale [UBO]/IRD/Institut français de recherche pour l'exploitation de la mer [Ifremer]), Plouzané, France

<sup>c</sup> L'Institut Universitaire de Pêche et d'Aquaculture [IUPA], Université Cheikh Anta Diop de Dakar, Dakar, Sénégal

<sup>d</sup> Université Gaston Berger [UGB], Saint-Louis, Sénégal

<sup>e</sup> Institut de Recherche pour le Développement [IRD], Laboratoire des sciences de l'Environnement Marin [UMR 6539 LEMAR] (CNRS/UBO/IRD/Ifremer), Dakar, Sénégal

Published online: 01 Oct 2014.

To cite this article: I Ndour, F Le Loc'h, J Kantoussan, M Thiaw, HD Diadhiou, JM Ecoutin, L Tito de Morais & OT Thiaw (2014) Changes in the trophic structure, abundance and species diversity of exploited fish assemblages in the artisanal fisheries of the northern coast, Senegal, West Africa, African Journal of Marine Science, 36:3, 361-368, DOI: [10.2989/1814232X.2014.950696](https://doi.org/10.2989/1814232X.2014.950696)

To link to this article: <http://dx.doi.org/10.2989/1814232X.2014.950696>

PLEASE SCROLL DOWN FOR ARTICLE

Taylor & Francis makes every effort to ensure the accuracy of all the information (the "Content") contained in the publications on our platform. However, Taylor & Francis, our agents, and our licensors make no representations or warranties whatsoever as to the accuracy, completeness, or suitability for any purpose of the Content. Any opinions and views expressed in this publication are the opinions and views of the authors, and are not the views of or endorsed by Taylor & Francis. The accuracy of the Content should not be relied upon and should be independently verified with primary sources of information. Taylor and Francis shall not be liable for any losses, actions, claims, proceedings, demands, costs, expenses, damages, and other liabilities whatsoever or howsoever caused arising directly or indirectly in connection with, in relation to or arising out of the use of the Content.

This article may be used for research, teaching, and private study purposes. Any substantial or systematic reproduction, redistribution, reselling, loan, sub-licensing, systematic supply, or distribution in any

form to anyone is expressly forbidden. Terms & Conditions of access and use can be found at <http://www.tandfonline.com/page/terms-and-conditions>

# Changes in the trophic structure, abundance and species diversity of exploited fish assemblages in the artisanal fisheries of the northern coast, Senegal, West Africa

I Ndour<sup>1,2,3</sup>, F Le Loc'h<sup>2\*</sup>, J Kantoussan<sup>4</sup>, M Thiaw<sup>1</sup>, HD Diadiou<sup>1</sup>, JM Ecoutin<sup>5</sup>, L Tito de Morais<sup>2</sup> and OT Thiaw<sup>3</sup>

<sup>1</sup> Institut Sénégalais de Recherches Agricoles [ISRA]/Centre de Recherche Océanographique de Dakar-Thiaroye [CRODT], Pôle de Recherche de Hann, Dakar, Sénégal

<sup>2</sup> Institut de Recherche pour le Développement [IRD], Laboratoire des sciences de l'Environnement Marin [UMR 6539 LEMAR] (Centre national de la recherche scientifique [CNRS]/Université de Bretagne Occidentale [UBO]/IRD/Institut français de recherche pour l'exploitation de la mer [Ifremer]), Plouzané, France

<sup>3</sup> L'Institut Universitaire de Pêche et d'Aquaculture [IUPA], Université Cheikh Anta Diop de Dakar, Dakar, Sénégal

<sup>4</sup> Université Gaston Berger [UGB], Saint-Louis, Sénégal

<sup>5</sup> Institut de Recherche pour le Développement [IRD], Laboratoire des sciences de l'Environnement Marin [UMR 6539 LEMAR] (CNRS/UBO/IRD/Ifremer), Dakar, Sénégal

\* Corresponding author, e-mail: [francois.le.loch@ird.fr](mailto:francois.le.loch@ird.fr)

This work investigates the effects of changes in both fishing pressure and the environment on the trophic dynamics, abundance and diversity of species in the artisanal commercial fisheries off the northern coast of Senegal. Using artisanal commercial fishing data (provided by the Centre for Oceanographic Research of Dakar-Thiaroye [CRODT] in Senegal), we identify changes in the catch per unit effort, mean trophic level, biomass trophic spectrum and species diversity between two fishing periods (1990–1999 and 2000–2009). Decreases in mean trophic level, the biomass of high trophic level species and indices of species diversity between 1990 and 2009 were observed in commercial catches. These decreases were then related to changes in fishing pressure, fishing strategy and the combined effects of fishing and environmental factors (as derived from satellite observations). This paper helps to better inform the management of fisheries resources by providing decision makers with more effective biological indicators that incorporate the effects of fishing pressure and environmental change and that are applicable at local, regional and global scales.

**Keywords:** artisanal fishery, ecosystems indicators, trophic level

## Introduction

Changes in fishing practices, exploitation levels and climate affect the steady state of marine ecosystems (Garcia et al. 2001), with fishing being a key human impact (Jennings and Kaiser 1998; Jackson et al. 2001). Fisheries activities affect fish communities directly by removing target (Zwanenburg 2000) and bycatch species (Stevens et al. 2000) and indirectly through habitat modification (Moran and Stephenson 2000). In addition, fishing indirectly alters biotic interactions, a phenomenon which is spread through food webs via trophic cascades (Cury et al. 2003). In conjunction with climate change, fishing can cause changes in the structure of fish assemblages in terms of biomass, species richness, trophic structure (Pauly et al. 1998; Albaret and Laë 2003) and size spectra (Blaber et al. 2000).

The need to respond effectively to these multi-faceted impacts has led to the increasing adoption of ecosystem-based approaches to fisheries management (Garcia et al. 2003; Cury et al. 2005; Coll et al. 2008). Commonly, ecosystem indicators, including those based on size, trophic structure, relative abundance and species diversity (e.g. Bianchi et al. 2000; Trenkel and Rochet 2003), are used

to inform such approaches (Cury and Christensen 2005). When changes to these indicators occur, managers are provided with an enhanced picture of how fishing pressures and/or environmental changes may be impacting the evolution of the structure and functioning of ecosystems.

Few studies in Africa have integrated the effects of both fishing and environmental change in the assessment of fisheries resources (Domain 2000; Erzini et al. 2005; Shannon et al. 2009). Typically, they are assessed separately (e.g. fishing effects: Gascuel and Ménard 1997; Jouffre et al. 2004; Laurans et al. 2004; or environmental effects: Cury and Roy 1987; Diatta et al. 2010; Koranteng 2001). This study aims to integrate both fishing effort and environmental factors when assessing the fisheries resources of a heavily exploited, but poorly documented, marine ecosystem. By investigating changes in biological indicators based on trophic structure, relative abundance and species diversity between two fishing periods (1990–1999 and 2000–2009), this study aims to better understand the responses of fish assemblages to the effects of both environmental change and fishing pressure.

**Materials and methods**

**Data**

*Commercial fishing data*

Artisanal commercial fishing data were obtained from the Centre for Oceanographic Research of Dakar-Thiaroye (CRODT), Senegal. The catch data were based on daily surveys of landings in Saint-Louis and Kayar on the northern coast (Grande Côte) of Senegal between 1990 and 2009 (Figure 1). This database includes catch by species (kg), fishing effort (i.e. number of fishing trips), fishing season and fishing gear. The data collection method is based on a hierarchical three-tier stratification scheme based on: (i) the fishing port; (ii) the month during which fishing occurred; and (iii) the type of gear used. This method incorporates the spatio-temporal variations of each fishing method.

The trophic levels of the species considered in this study were extracted from FishBase (Froese and Pauly 2012).

*Environmental data*

Sea surface temperatures and chlorophyll *a* concentrations (1990–2009) were extracted from the websites of the National Oceanic and Atmospheric Administration (NOAA; <http://las.pfeg.noaa.gov>) and the French Research Institute for the Exploitation of the Sea (Ifremer; <http://www.brest.ird.fr/us191/valorisation/obsat/aos.php>). A coastal upwelling index was extracted from [http://las.pfeg.noaa.gov/las6in?var=1638\\_5/servlets/constra](http://las.pfeg.noaa.gov/las6in?var=1638_5/servlets/constra).

*Extrapolation of catch*

The catch from commercial fisheries (Table 1) was extrapolated from the number of daily fishing trips according to the following equations:

$$C_j = (C_{sur} / S_{sur}) \times S_j \tag{1}$$

$$C_k = (C_j \times 365) \tag{2}$$

where  $C_j$  is the estimated catch (kg) per day  $j$ ;  $S_j$  is the fishing effort (i.e. number of fishing trips);  $C_{sur}$  is the catch that is surveyed (kg);  $S_{sur}$  is the fishing effort (i.e. number of fishing trips) represented by the survey catch; and  $C_k$  is the estimated annual catch (kg), assuming each year has 365 days.

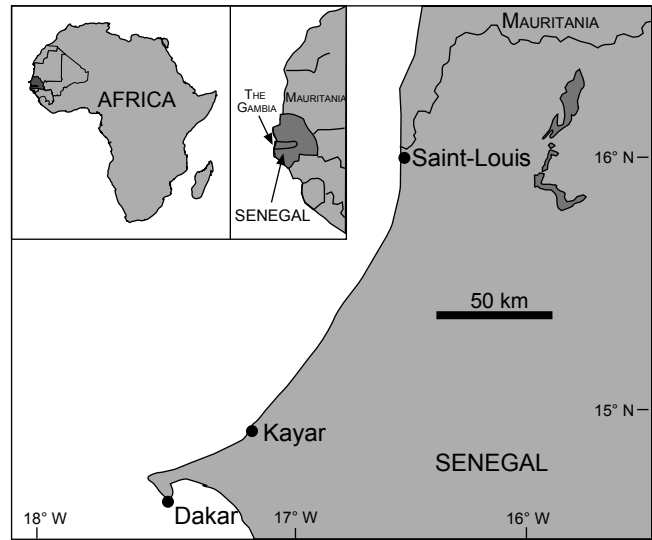
*Catch per unit effort*

A generalised linear model (GLM) was applied (Gaussian distribution) to standardise the catch per unit effort (CPUE) (i.e. the abundance index [AI]) per year for each trophic class (i.e. classes based on trophic levels binned by 0.25, range: 2 to 4.75). A benefit of GLMs is that they enable an equal weight distribution to be given to each category of the explanatory variables selected, thereby balancing the sampling plan. They can also simultaneously process different years of data by taking into account information that is acquired each year (Laurans et al. 2004). The variables included in the GLM were the fishing port (Kayar and Saint-Louis), year (1990 to 2009), season (cold and hot season) and gear type (lines, longlines, gillnets, driftnets, trammelnets, purse-seines, beach-seines and castnets).

First, a logarithmic transformation was applied to the data to homogenise the variances due to the multiplicative effects of the variables. We assumed that the response,  $\ln(\text{CPUE})$ , follows a linear model of the form:

$$\ln(\text{CPUE}) = \mu + P + Y + S + G + \varepsilon \tag{3}$$

where  $\ln(\text{CPUE})$  is the natural logarithm of the CPUE by trophic class,  $\mu$  is the intercept,  $P$  is the effect of fishing port,  $Y$  is the year effect,  $S$  is the season effect,  $G$  is the effect of fishing gear category and  $\varepsilon$  is the residual. The individual and interaction effects were tested. Only variables



**Figure 1:** Map showing the study areas along the northern coast of Senegal

**Table 1:** Catch (kg) by artisanal fisheries at two fishing ports on the northern coast of Senegal from 1990 to 2009

| Year  | Kayar         | Saint-Louis   | Total         |
|-------|---------------|---------------|---------------|
| 1990  | 3 561 052.3   | 2 529 927.0   | 6 090 979.2   |
| 1991  | 2 316 671.9   | 1 178 099.7   | 3 494 771.6   |
| 1992  | 11 592 230.0  | 2 338 425.1   | 13 930 655.1  |
| 1993  | 11 865 580.4  | 8 801 335.0   | 20 666 915.4  |
| 1994  | 7 881 408.8   | 10 119 916.4  | 18 001 325.1  |
| 1995  | 6 078 383.4   | 7 823 386.1   | 13 901 769.6  |
| 1996  | 6 645 038.4   | 4 914 459.4   | 11 559 497.8  |
| 1997  | 6 492 308.5   | 1 282 712.8   | 7 775 021.3   |
| 1998  | 6 486 377.3   | 840 252.7     | 7 326 630.0   |
| 1999  | 6 506 720.7   | 5 513 389.1   | 12 020 109.7  |
| 2000  | 9 788 529.6   | 4 820 661.1   | 14 609 190.7  |
| 2001  | 10 498 139.0  | 4 362 525.1   | 14 860 664.1  |
| 2002  | 7 988 503.9   | 11 483 161.7  | 19 471 665.7  |
| 2003  | 11 468 148.8  | 19 280 855.0  | 30 749 003.9  |
| 2004  | 17 920 390.5  | 30 776 076.4  | 48 696 466.8  |
| 2005  | 17 579 236.3  | 65 603 975.9  | 83 183 212.1  |
| 2006  | 13 448 114.6  | 42 653 701.8  | 56 101 816.4  |
| 2007  | 187 620.8     | 49 616 469.9  | 49 804 090.7  |
| 2008  | 18 469 208.8  | 53 708 312.8  | 72 177 521.6  |
| 2009  | 21 784 868.0  | 30 377 233.8  | 52 162 101.8  |
| Total | 198 558 531.9 | 358 024 876.6 | 556 583 408.5 |

Downloaded by [41.82.139.87] at 07:17 12 November 2014

that significantly explained the observed deviance were retained (Table 2). CPUE values were then retransformed to their original scale using an exponential transformation with the Laurent correction (Laurent 1963), which provides unbiased values of the expected AI:

$$AI_i = e^{\ln(CPUE_i)} \times e^{(\sigma^2(\ln(CPUE_i)))/2} \quad (4)$$

where  $\sigma^2$  is the variance estimator associated with the observation.

**Mean trophic level**

The mean trophic level ( $TL_m$ ) was calculated from the commercial fishing catches as follows:

$$TL_m = \frac{\sum_{i=1}^S Y_{ik} TL_i}{\sum_{i=1}^S Y_{ik}} \quad (5)$$

where  $Y_{ik}$  is the landing of species  $i$  for year  $k$ ,  $TL_i$  is the trophic level of the species and  $S$  is the number of species surveyed during the year. To verify the relationship between year and the mean trophic level, a linear correlation was used.

**Diversity indices**

Species diversity was compared between the two fishing periods using the commonly used Shannon diversity index  $H'$  (Lobry et al. 2003; Munyandorero 2006), the Simpson index  $\lambda$ , the equitability index  $J$  and the dominance index  $D$ . In the present study,  $H'$  was calculated from the proportions of species in the catches (Whitfield 1986; Jin and Tang 1996; Emery et al. 2007), according to the following equation:

$$H' = -\sum_{i=1}^S p_i \times \ln p_i \quad (6)$$

where  $p_i$  is the proportion of species  $i$  and  $S$  is the total number of species in the sample. The Shannon index is often accompanied by the equitability index  $J$  (Pielou 1966):

$$J = H' / \ln S \quad (7)$$

The Simpson index  $\lambda$  (Simpson 1949) measures the probability that two randomly selected individuals belong to the same species:

$$\lambda = \frac{\sum_{i=1}^S p_i^2}{\sum_{i=1}^S p_i^2} \quad (8)$$

A determination of the dominance parameters allowed the taxonomic structure of the fish assemblages to be defined (Grall and Coïc 2006):

$$D = 1 - \sum_{i=1}^S p_i^2 \quad (9)$$

**Statistical analysis**

The CPUE, trophic level and species diversity indices were tested between the two fishing periods (1990–1999 and 2000–2009) using bootstrapping. The Aspin–Welch non-parametric test, which is equivalent to the Student’s  $t$ -test for samples that possibly have unequal variances, was performed to compare the means of the indicators

between the two periods. A one-way ANOVA was used to test the effects of environmental factors and fishing pressure – separately and together – and the combined effects of both on changes in the indicators.

**Results**

**Environmental variation and dynamics of exploitation**

Significant differences were found for both fishing pressure and environmental factors between the two fishing periods (Table 3). The means of the fishing effort were greater during the second period (2000s: 270 688 fishing trips; SD 43 658) than the first (1990s: 153 386 fishing trips; SD 57 870). In contrast, the mean concentration of chlorophyll  $a$  was greater in the 1990s (6.15 mg m<sup>-3</sup>; SD 2.10) than in the 2000s (4.30 mg m<sup>-3</sup>; SD 0.59).

**CPUE abundance index**

The AI represented by the commercial fishing CPUE showed a gradual decline from 1990 to 2009 (Figure 2). The mean CPUE differed significantly (Table 3) between the two fishing periods, with an output of 1 008.8 kg fishing trip<sup>-1</sup> y<sup>-1</sup> in the 1990s as compared with 948.4 kg fishing trip<sup>-1</sup> y<sup>-1</sup> in the 2000s (Figure 2).

**Mean trophic level**

The  $TL_m$  of the commercial catches showed a significant decrease between 1990 and 2009 (Figure 3), with a mean decrease of 0.01 trophic level year<sup>-1</sup>. It differed significantly between the two periods (Table 3) with a  $TL_m$  of 3.50 (1990–1999) and 3.42 (2000–2009; Figure 3).

**Relationship between catch and  $TL_m$**

A significant negative relationship was found between  $TL_m$

**Table 2:** Generalised linear model (GLM) results for testing the effects of variables on CPUE by trophic class

|        | Df | Deviance | Resid. df | Resid. dev | $p$      |
|--------|----|----------|-----------|------------|----------|
| Null   |    |          | 29 792    | 56 724     |          |
| Year   | 19 | 2 127.83 | 29 773    | 54 596     | <2.2E–16 |
| Port   | 1  | 990.96   | 29 772    | 53 605     | <2.2E–16 |
| Season | 3  | 42.97    | 29 769    | 53 562     | 1.4E–05  |
| Gear   | 7  | 2 814.81 | 29 762    | 50 747     | <2.2E–16 |

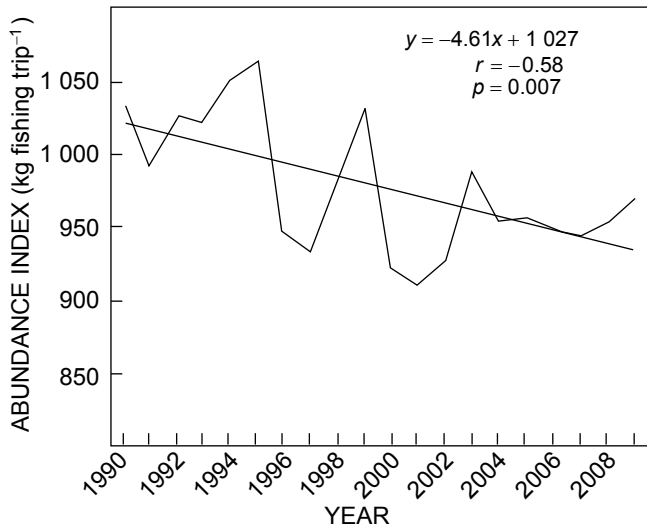
**Table 3:** Results of statistical analyses (Aspin–Welch test) of differences between environmental parameters, fishing effort, catch per unit effort (CPUE) and mean trophic level ( $TL_m$ ) during two fishing periods (1990–1999 and 2000–2009) on the northern coast of Senegal

|                               | $t$ -value | df    | $p$    |
|-------------------------------|------------|-------|--------|
| Chlorophyll $a$ concentration | 7.17       | 10.39 | 0.0225 |
| Sea surface temperature (°C)  | 5.479      | 11.9  | 0.0375 |
| Fishing effort                | 26.18      | 16.74 | 0.0001 |
| CPUE                          | 14.19      | 13.74 | 0.0021 |
| $TL_m$                        | 19.71      | 11.18 | 0.001  |

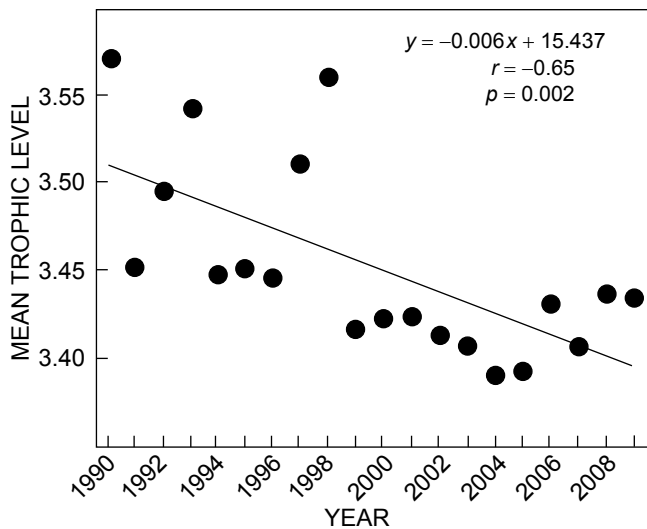
and catch volume ( $r = -0.52$ ;  $p = 0.020$ ; Figure 4a), as although  $TL_m$  decreased in the commercial catch, the total volume of catch increased (Figure 4b). Catch volumes of demersal species were observed to decline from 1990 to 2009, while volumes of pelagic species were observed to increase (Figure 4c).

**Trophic spectra of catch**

Higher catch rates of low trophic level species ( $TL < 3.00$ ) were observed in the 2000s but the catch rates between the two periods were relatively similar for high ( $TL > 3.50$ ) and intermediate ( $3.00 \leq TL \leq 3.25$ ) trophic level species (Figure 5).



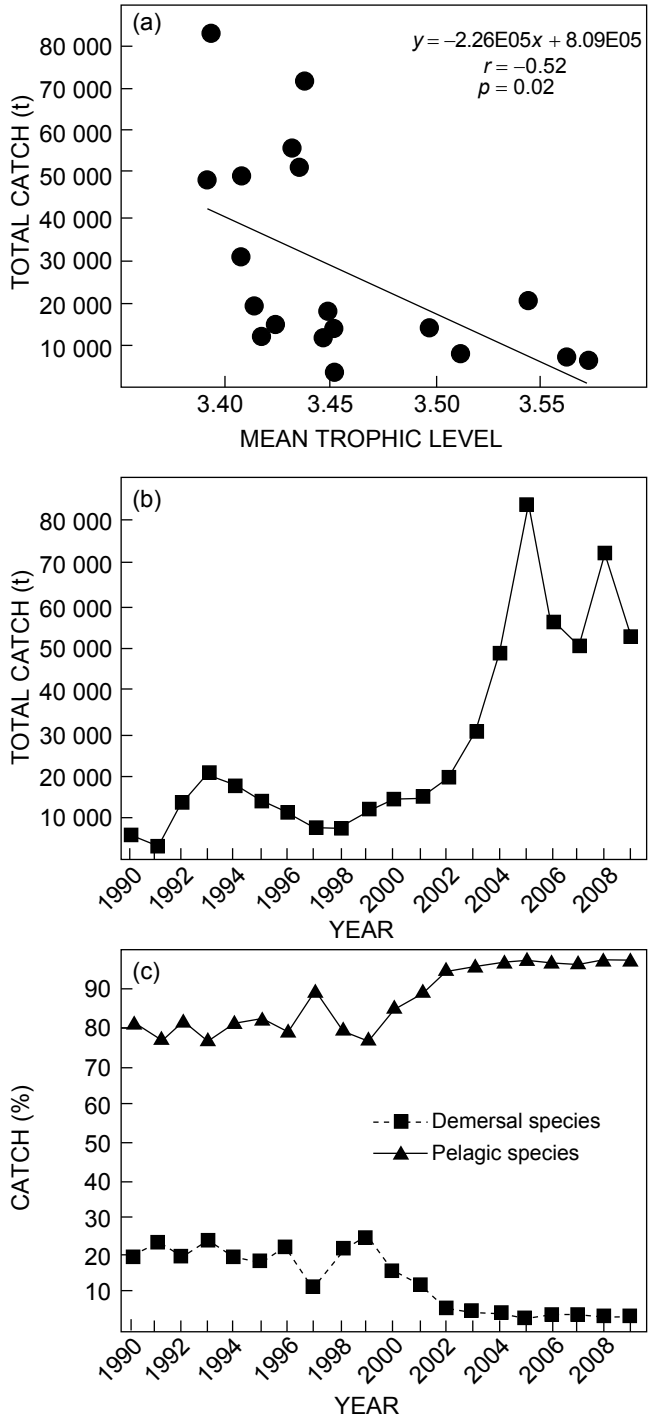
**Figure 2:** Trend in the abundance index of fish communities estimated from the catch per unit effort of commercial fishing on the northern coast of Senegal between 1990 and 2009



**Figure 3:** Trend in mean trophic level of fish communities estimated from commercial fishing catches on the northern coast of Senegal between 1990 and 2009

**Diversity indices**

The Shannon species diversity index was found to be greater in the 1990s (2.14) than the 2000s (1.44). In contrast, the dominance index was stronger in the 2000s (0.51) than the 1990s (0.32). The equitability index was



**Figure 4:** (a) Relationship between the mean trophic level and total catch estimated from commercial fishing; (b) time-series of the estimated total catch from commercial fishing; (c) percentage of the catch of pelagic and demersal species, on the northern coast of Senegal from 1990 to 2009

Downloaded by [41.82.139.87] at 07:17 12 November 2014



determined to be greater in the 1990s (0.41) than the 2000s (0.27) (Table 4). During the period 1990–1999 the dominant species caught, by biomass, were *Sardinella aurita* (57.6%), *Sardinella maderensis* (15.1%), *Pagellus bellottii* (4.7%) and *Chloroscombrus chrysurus* (2.9%), and during the period 2000–2009 *S. aurita* (70.6%), *S. maderensis*

(11.4%), *C. chrysurus* (6.4%) and *Scomber japonicus* (1.8%) (Table 5).

**Analysis of impact factors**

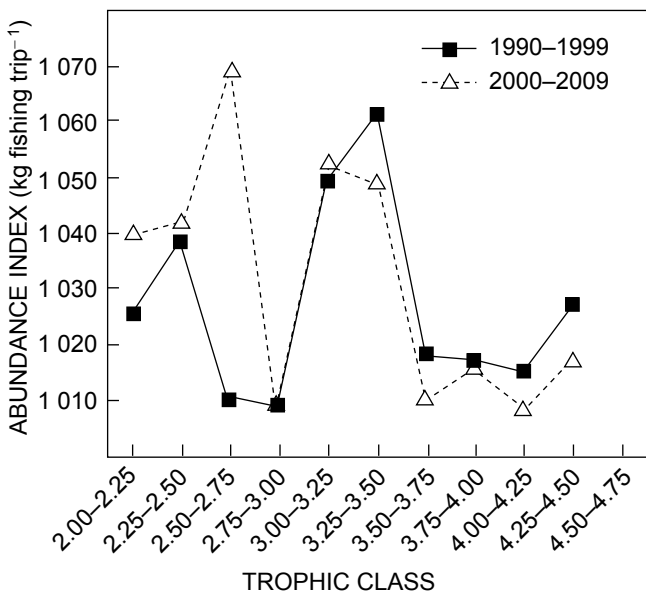
The results showed significant statistical associations or potential effects of both fishing effort and chlorophyll a concentration on CPUE and TL<sub>m</sub> (Table 6). There was also a significant potential effect of fishing effort on the Shannon diversity index (Table 6).

**Discussion**

Several studies have been conducted to develop indicators that identify variations and changes in the structure and health of communities; this goal has been desirable so that principal threats acting on marine ecosystems may be detected more easily and with a greater understanding of their impacts (Nicholson and Jennings 2004; Jennings and Dulvy 2005; Greenstreet and Rogers 2006). However, the management and/or mitigation of these threats requires an understanding of their relative importance, and cumulative effects, in complex ecosystems (Blanchard et al. 2010; Bundy et al. 2010; Shin and Shannon 2010). Biological indicators are a synthetic simplification of this information and can thus act as relevant tools for management purposes (Elliott et al. 2007; Harrison and Whitfield 2008).

The decrease in the commercial CPUE from 1990 to 2009 can be explained by the decrease in the catches of larger species and the increase of smaller species, which are both related to increasing fishing pressure (as also found by Sibert et al. [2006]), changes in environmental factors (e.g. chlorophyll a concentration) and a change in the targeted species in this fishery. The study of Erzini et al. (2005) in Mauritania also found significant relationships between CPUE and the environment, and linked the general decline in CPUE over time to environmental changes.

The change in the TL<sub>m</sub> of catches toward a higher biomass of low trophic level species for the 2000–2009 period may be due to fishing down marine food webs (Pauly et al. 1998). In combination with this hypothesis, our results suggest that the observed decrease in TL<sub>m</sub> found here may be related to effects of changing fishing effort and environment on the trophic structure of fish assemblages. We observed a change in fishing strategies of these fisheries to target the smaller, more abundant species (e.g. use of small mesh, mixing of fishing gear, etc.) as larger species become



**Figure 5:** Trophic spectra of fish communities estimated from commercial fishing catches for two fishing periods (1990–1999 and 2000–2009) on the northern coast of Senegal

**Table 4:** Dominance and species diversity indices estimated from commercial fishing catches between 1990–1999 and 2000–2009 on the northern coast of Senegal (t: bootstrapping)

|                        | 1990–1999 | 2000–2009 | t   |
|------------------------|-----------|-----------|-----|
| Total no. of species S | 178       | 178       | ns  |
| Sample weight (kg)     | 114 784   | 441 729   | *** |
| Dominance D            | 0.32      | 0.51      | *** |
| Shannon index H'       | 2.14      | 1.40      | *** |
| Equitability index J   | 0.41      | 0.27      | *** |

ns = not significant  
 \*\*\* = significant at 0.001

**Table 5:** Percentage of dominant species in the catches and their trophic levels (TL) for the two fishing periods (1990–1999 and 2000–2009) on the northern coast of Senegal

| 1990–1999                          |           |     | 2000–2009                          |           |     |
|------------------------------------|-----------|-----|------------------------------------|-----------|-----|
| Species                            | Catch (%) | TL  | Species                            | Catch (%) | TL  |
| 1. <i>Sardinella aurita</i>        | 57.6      | 3.4 | 1. <i>Sardinella aurita</i>        | 70.6      | 3.4 |
| 2. <i>Sardinella maderensis</i>    | 15.1      | 3.2 | 2. <i>Sardinella maderensis</i>    | 11.4      | 3.2 |
| 3. <i>Pagellus bellottii</i>       | 4.7       | 3.6 | 3. <i>Chloroscombrus chrysurus</i> | 6.4       | 3.2 |
| 4. <i>Chloroscombrus chrysurus</i> | 2.9       | 3.2 | 4. <i>Scomber japonicus</i>        | 1.8       | 3.1 |
| 5. <i>Decapterus rhonchus</i>      | 2.6       | 3.6 | 5. <i>Decapterus rhonchus</i>      | 1.4       | 3.6 |
| 6. <i>Brachydeuterus auritus</i>   | 1.9       | 3.0 | 6. <i>Sardina pilchardus</i>       | 0.9       | 3.1 |
| 7. <i>Pteroscion peli</i>          | 1.7       | 3.6 | 7. <i>Pagellus bellottii</i>       | 0.9       | 3.6 |
| 8. <i>Dentex angolensis</i>        | 1.3       | 3.5 | 8. <i>Brachydeuterus auritus</i>   | 0.7       | 3.0 |
| 9. <i>Cynoglossus canariensis</i>  | 1.2       | 3.6 | 9. <i>Pteroscion peli</i>          | 0.5       | 3.6 |

**Table 6:** Results of statistical analyses of the effects of chlorophyll *a* concentration and of fishing effort on the biological indicators using a one-way ANOVA test.  $H'$  = Shannon diversity index ;  $TL_m$  = mean trophic level; CPUE = catch per unit effort

| Factor                                | Variable | df | Sum sq.  | Mean sq. | F-value | p       |
|---------------------------------------|----------|----|----------|----------|---------|---------|
| Chlorophyll <i>a</i>                  | $TL_m$   | 1  | 0.01484  | 0.014842 | 5.233   | 0.0345  |
|                                       | CPUE     | 1  | 0.0141   | 0.014097 | 9.076   | 0.00748 |
|                                       | $H'$     | 1  | 0.767    | 0.7665   | 3.814   | 0.0666  |
| Fishing effort                        | $TL_m$   | 1  | 0.02494  | 0.024942 | 10.96   | 0.00389 |
|                                       | CPUE     | 1  | 0.00907  | 0.009067 | 4.948   | 0.0392  |
|                                       | $H'$     | 1  | 1.146    | 1.146    | 6.37    | 0.0212  |
| Chlorophyll <i>a</i> : Fishing effort | $TL_m$   | 1  | 0.000122 | 0.000122 | 0.065   | 0.80266 |
|                                       | CPUE     | 1  | 0.002124 | 0.002124 | 1.758   | 0.20349 |
|                                       | $H'$     | 1  | 0.0438   | 0.0438   | 0.266   | 0.6134  |

more scarce in the ecosystem (Caddy and Garibaldi 2000; Laë et al. 2004). Sosa-Lopez et al. (2005) also observed changes in the trophic structure of a coastal lagoon in Mexico due to several simultaneous and interacting factors, supporting our observations.

Indeed, as low trophic level species usually occur in schools, fishing effort is expected to have an important influence on the amount of biomass in the catches. Similar results have been found in the Celtic Sea (Pinnegar et al. 2002) and in the Mauritanian exclusive economic zone (Abdellahi 2010), where an overall decline in the  $TL_m$  of artisanal fisheries catch was observed over a 12-year period. The decline in  $TL_m$  shown here is linked to the shift in fishing effort toward small-sized species, which then become the predominant proportion of the catch. The increased catches of a high volume of low trophic level species landed by the artisanal fisheries then affect the abundance of these species in the ecosystem. This is likely to have a critical impact on ecosystem health as these species are an important component of the food web and help to maintain the trophic structure of the ecosystem (Cury et al. 2003).

Several studies on artisanal fisheries have shown that as fishing effort increases, the diversity index decreases (Albaret and Laë 2003; Kantoussan et al. 2010). The decline in the Shannon diversity index from the 1990s to the 2000s can be explained, in part, by the significant differences in fishing effort and strategies between the two periods (Daan et al. 2005; Jouffre and Inejih 2005). In fact, higher fishing pressure is commonly associated with lower diversity and the higher dominance of a few species in the ecosystem (Gislason and Rice 1998; Pinnegar et al. 2000).

Decreases in the biological indicators used in this study (i.e. CPUE,  $TL_m$  and the Shannon diversity index) are significantly linked to the effects of intense fishing pressure, as found in other studies. For example, Lobry et al. (2003) observed that decreases over time in the abundance and species richness of fish on the continental shelf of Guinea was a result of increased fishing effort. Moreover, recent studies have shown that different trophic-level-trend scenarios can correspond to specific sequences of the evolution of a fishery (Foley 2013).

The present results indicate that fishing pressure is affecting the composition of catches off the Senegalese coast. Therefore, our results indicate that changes in fishing pressure may play an important role in changing the

trophic structure, diversity and abundance of fish species in the Senegalese coastal ecosystem, consistent with the findings of several studies (Munyandorero 2006; Coll et al. 2010; Link et al. 2010). However, fishing effort is not the sole factor affecting ecosystem dynamics, as we also found that chlorophyll *a* concentrations significantly influenced the trophic structure and abundance of fish species.

Our study tested the response of three indicators ( $TL_m$ , the Shannon diversity index and CPUE as an abundance index) to the effects of both fishing effort and environmental changes, with the aim of better estimating how biological indicators can be used in fisheries management. The results of this paper identify the importance of simultaneously assessing the individual and cumulative effects of fishing effort and environmental factors on biological indicators of ecosystem health. This paper supports their inclusion in resource and fisheries management, as has been requested by other recent studies (Link et al. 2010; Shannon et al. 2010).

## Conclusion

This study suggests that environmental changes and fishing pressure are both influencing the fish assemblage dynamics along the northern coast of Senegal. These results show that integrating environmental effects is an important consideration for fisheries management. The results of this study also demonstrate the urgent need to again investigate the potentially significant role of coastal artisanal fisheries on the degradation of fishery resources. This paper helps to better inform the management of fisheries resources by providing decision makers with more effective biological indicators that incorporate the effects of fishing pressure and environmental change and that are applicable at local, regional and global scales.

*Acknowledgements* — Our thanks go to the PARTAGE project of the International Union for Conservation of Nature (IUCN), Mauritania, the Intergovernmental Oceanographic Commission (IOC) of the United Nations Educational, Scientific and Cultural Organisation (UNESCO) and the U3E program of French Cooperation for their financial support for IN. Thanks go as well to Drs Massal Fall, Djiga Thiao, Diaga Thiam and Fambaye Ngom Sow for reading and correcting the paper, and to Madiemé Faye and Mor Sylla, technicians in CRODT/ISRA, for their technical assistance. We are very grateful to Jane Alpine for English editing. We also thank the two anonymous referees for their helpful comments on the manuscript.

## References

- Abdellahi OSOB. 2010. Évolution du niveau trophique des débarquements de la pêche artisanale mauritanienne entre 1997 et 2008. *Journal des Sciences Halieutiques et Aquatiques* 3: 97–103.
- Albaret JJ, Laë R. 2003. Impact of fishing on fish assemblages in tropical lagoons: the example of the Ebrie lagoon, West Africa. *Aquatic Living Resources* 16: 1–9.
- Bianchi G, Gislason H, Graham K, Hill L, Jin X, Koranteng K, Manickchand-Heileman S, Paya I, Sainsbury K, Sanchez F, Zwanenburg K. 2000. Impact of fishing on size composition and diversity of demersal fish communities. *ICES Journal of Marine Science* 57: 558–571.
- Blaber SJM, Cyrus DP, Albaret JJ, Ching CV, Day JW, Elliott M, Fonseca MS, Hoss DE, Orensanz J, Potter IC, Silvert W. 2000. Effects of fishing on the structure and functioning of estuarine and nearshore ecosystems. *ICES Journal of Marine Science* 57: 590–602.
- Blanchard JL, Coll M, Trenkel VM, Vergnon R, Yemane D, Jouffre D, Link JS, Shin YJ. 2010. Trend analysis of indicators: a comparison of recent changes in the status of marine ecosystems around the world. *ICES Journal of Marine Science* 67: 732–744.
- Bundy A, Shannon LJ, Rochet MJ, Neira S, Shin YJ, Hill L, Aydin K. 2010. The good(ish), the bad and the ugly: a tripartite classification of ecosystem trends. *ICES Journal of Marine Science* 67: 745–768.
- Caddy JF, Garibaldi L. 2000. Apparent changes in the trophic composition of world marine harvests: the perspective from the FAO capture database. *Ocean & Coastal Management* 43: 615–655.
- Coll M, Libralato S, Tudela S, Palomera I, Pranovi F. 2008. Ecosystem overfishing in the ocean. *PLoS ONE* 3: e3881.
- Coll M, Shannon LJ, Yemane D, Link JS, Ojaveer H, Neira S, Jouffre D, Labrosse P, Heymans JJ, Fulton EA, Shin YJ. 2010. Ranking the ecological relative status of exploited marine ecosystems. *ICES Journal of Marine Science* 67: 769–786.
- Cury PM, Christensen V. 2005. Quantitative ecosystem indicators for fisheries management. *ICES Journal of Marine Science* 62: 307–310.
- Cury P[M], Roy C. 1987. Upwelling et pêche des espèces pélagiques côtiers de Côte d'Ivoire : une approche globale. *Oceanologica Acta* 10: 347–357.
- Cury PM, Shannon LJ, Roux JP, Daskalov GM, Jarre A, Moloney CL, Pauly D. 2005. Trophodynamic indicators for an ecosystem approach to fisheries. *ICES Journal of Marine Science* 62: 430–442.
- Cury P[M], Shannon LJ, Shin YJ. 2003. The functioning of marine ecosystems: a fisheries perspective. In: Sinclair M, Valdimarsson G (eds), *Responsible fisheries in the marine ecosystem*. Wallingford: CAB International. pp 103–123.
- Daan N, Gislason H, Pope JG, Rice JC. 2005. Changes in the North Sea fish community: evidence of indirect effects of fishing? *ICES Journal of Marine Science* 62: 177–188.
- Diatta Y, Diop M, Ka A. 2010. Effet de la variabilité de l'environnement physique, température et vent, sur l'abondance des ressources pélagiques au Sénégal (1989–2001). *Journal des Sciences Halieutiques et de l'Aquaculture* 1: 39–48.
- Domain F. 2000. Influence de la pêche et de l'hydroclimat sur l'évolution dans le temps du stock côtier (1985–1995). In: Domain F, Chavance P, Diallo A (eds), *La pêche côtière en guinée : ressources et exploitation*. IRD/CNSHB. pp 117–136.
- Elliott M, Whitfield AK, Potter IC, Blaber SJ, Cyrus DP, Nordlie FG, Harrison TD. 2007. The guild approach to categorizing estuarine fish assemblages: a global review. *Fish and Fisheries* 8: 241–268.
- Emery E, Tewes R, Argo R, Thomas J. 2007. Development of a probability based monitoring and assessment strategy for selected large rivers within US EPA Region V. Final report prepared for the US Environmental Protection Agency. River Valley Water Sanitation Commission, Ohio.
- Erzini K, Inejih CAO, Stobberup KA. 2005. An application of two techniques for the analysis of short, multivariate non-stationary time-series of Mauritanian trawl survey data. *ICES Journal of Marine Science* 62: 353–359.
- Foley CMR. 2013. Management implications of fishing up, down, or through the marine food web. *Marine Policy* 37: 176–182.
- Froese R, Pauly D (eds). 2012. FishBase, WorldWideWeb electronic publication. Available at [www.fishbase.org](http://www.fishbase.org) [accessed 5 January 2012].
- Garcia AM, Viera JP, Winemiller KO. 2001. Dynamics of the shallow-water fish assemblage of the Patos Lagoon estuary (Brazil) during cold and warm ENSO episodes. *Journal of Fish Biology* 59: 1218–1238.
- Garcia SM, Zerbi A, Aliaume C, Do Chi T, Lasserre G. 2003. The ecosystem approach to fisheries. Issues, terminology, principles, institutional foundations, implementation and outlook. *FAO Technical Report* 443. Rome: Food and Agriculture Organization.
- Gascuel D, Ménard F. 1997. Assessment of a multispecies fishery in Senegal, using production models and diversity indices. *Aquatic Living Resources* 10: 281–288.
- Gislason H, Rice J. 1998. Modelling the response of size and diversity spectra of fish assemblages to changes in exploitation. *ICES Journal of Marine Science* 55: 362–370.
- Grall J, Coïc N. 2006. Synthèse des méthodes d'évaluation de la qualité du benthos en milieu côtier. REF. Ifremer DYNECO/VIGIES/06-13/REBENT.
- Greenstreet SPR, Rogers SI. 2006. Indicators of the health of the North Sea fish community: identifying reference levels for an ecosystem approach to management. *ICES Journal of Marine Science* 63: 573–593.
- Harrison T, Whitfield AK. 2008. Geographical and typological changes in fish guilds of South African estuaries. *Journal of Fish Biology* 73: 2542–2570.
- Jackson JBC, Kirby MX, Berger WH, Bjorndal KA, Botsford LW, Bourque BJ, Bradbury RH, Cooke R, Eerlandson J, Estes JA, Hughes TP, Kidwell S, Lange CB, Lenihan HS, Pandolfi JM, Peterson CH, Steneck RS, Tegner MJ, Warner RR. 2001. Historical overfishing and the recent collapse of coastal ecosystems. *Science* 293: 629–638.
- Jennings S, Dulvy NK. 2005. Reference points and reference directions for size-based indicators of community structure. *ICES Journal of Marine Science* 62: 397–404.
- Jennings S, Kaiser MJ. 1998. The effects of fishing on marine ecosystems. *Advances in Marine Biology* 34: 201–351.
- Jin X, Tang Q. 1996. Changes in fish species diversity and dominant species composition in the Yellow Sea. *Fisheries Research* 26: 337–352.
- Jouffre D, Domalain G, Caverivière A, Thiam D. 2004. Analysis of demersal fish assemblages on the Senegalese continental shelf considering fishing impact over the decade 1986–1995. In: Vanden Berghe E, Brown M, Costello M, Heip C, Levitus S, Pissierssens P (eds), *Proceedings of the Colour of Ocean Data Symposium, 25–27 November 2002, Brussels*. IOC Workshop Report 188. Paris: UNESCO/Intergovernmental Oceanographic Commission; Oostende: Vlaams Instituut voor de Zee. pp 105–113.
- Jouffre D, Inejih CA. 2005. Assessing the impact of fisheries on demersal fish assemblages of the Mauritanian continental shelf, 1987–1999, using dominance curves. *ICES Journal of Marine Science* 62: 380–383.
- Kantoussan J, Ecoutin JM, Fontenelle G, Tito de Morais L, Laë R.

2010. Ecological indicators based on trophic spectrum as a tool to assess ecosystems fishing impacts. *Ecological Indicators* 10: 927–934.
- Koranteng KA. 2001. Diversity and stability of demersal species assemblages in the Gulf of Guinea. *West African Journal of Applied Ecology* 2: 49–63.
- Laë R, Ecoutin JM, Kantoussan J. 2004. The use of biological indicators for monitoring fisheries exploitation: application to manmade reservoirs in Mali. *Aquatic Living Resources* 17: 95–105.
- Laurans M, Gascuel D, Chassot E, Thiam D. 2004. Changes in the trophic structure of fish demersal communities in West Africa in three last decades. *Aquatic Living Resources* 17: 163–173.
- Laurent AG. 1963. Lognormal distribution and the translation method: description and estimation problems. *Journal of the American Statistical Association* 58: 231–235.
- Link JS, Yemane D, Shannon LJ, Coll M, Shin YJ, Hill L, Borges MF. 2010. Relating marine ecosystem indicators to fishing and environmental drivers: an elucidation of contrasting responses. *ICES Journal of Marine Science* 67: 787–795.
- Lobry J, Gascuel D, Domain F. 2003. La biodiversité spécifique des ressources démersales du plateau continental guinéen: utilisation d'indices classiques pour un diagnostic sur l'évolution de l'écosystème. *Aquatic Living Resources* 16: 59–68.
- Moran MJ, Stephenson PC. 2000. Effects of otter trawling on macrobenthos and management of demersal scalefish fisheries on the continental shelf of north-western Australia. *ICES Journal of Marine Science* 57: 510–516.
- Munyandorero J. 2006. Size, diversity, dominance and trophic structures of the fish community in a tropical lake: a case study for the Sinazongwe area, Lake Kariba, Zambia. *Aquatic Living Resources* 19: 123–136.
- Nicholson MD, Jennings S. 2004. Testing candidate indicators to support ecosystem-based management: the power of monitoring surveys to detect temporal trends in fish community metrics. *ICES Journal of Marine Science* 61: 35–42.
- Pauly D, Christensen V, Dalsgaard J, Froese R, Torres F. 1998. Fishing down marine food webs. *Science* 279: 860–863.
- Pielou EC. 1966. Shannon's formula as a measure of specific diversity: its use and measure. *American Naturalist* 100: 463–465.
- Pinnegar JK, Jennings S, O'Brien CM, Polunin NVC. 2002. Long-term changes in trophic level of the Celtic Sea fish community and fish market price distribution. *Journal of Applied Ecology* 39: 377–390.
- Pinnegar JK, Polunin VCN, Francour P, Badalamenti F, Chemello R, Harmelin-Vivien ML, Hereu B, Milazzo M, Zabala M, D'Anna G, Pipitone C. 2000. Trophic cascades in benthic marine ecosystems: lessons for fisheries and protected-area management. *Environmental Conservation* 27: 179–200.
- Shannon LJ, Coll M, Neira S. 2009. Exploring the dynamics of ecological indicators using food web models fitted to time series of abundance and catch data. *Ecological Indicators* 9: 1078–1095.
- Shannon LJ, Coll M, Yemane D, Jouffre D, Neira S, Bertrand A, Diaz E, Shin YJ. 2010. Comparing data-based indicators across upwelling and comparable systems for communicating ecosystem states and trends. *ICES Journal of Marine Science* 67: 807–832.
- Shin YJ, Shannon LJ. 2010. Using indicators for evaluating, comparing, and communicating the ecological status of exploited marine ecosystems. 1. The IndiSeas Project. *ICES Journal of Marine Science* 67: 686–691.
- Sibert J, Hampton J, Kleiber P, Maunder M. 2006. Biomass, size, and trophic status of top predators in Pacific Ocean. *Science* 314: 1773–1776.
- Simpson EH. 1949. Measurement of diversity. *Nature* 163: 688.
- Sosa-Lopez A, Mouillot D, Do Chi T, Ramos-Miranda J. 2005. Ecological indicators based on fish biomass distribution along trophic levels: an application to the Terminos coastal lagoon. *ICES Journal of Marine Science* 62: 453–458.
- Stevens JD, Bonfil R, Dulvy NK, Walker PA. 2000. The effects of fishing on sharks, rays and chimaeras (chondrichthyans) and the implications for marine ecosystems. *ICES Journal of Marine Science* 57: 476–494.
- Trenkel VM, Rochet MJ. 2003. Performance of indicators derived from abundance estimates for detecting the impact of fishing on a fish community. *Canadian Journal of Fisheries and Aquatic Sciences* 60: 67–85.
- Whitfield AK. 1986. Fish community structure response to major habitat changes within the littoral zone of an estuarine coastal lake. *Environmental Biology of Fishes* 17: 11–51.
- Zwanenburg KCT. 2000. The effects of fishing on demersal fish communities of the Scotian Shelf. *ICES Journal of Marine Science* 57: 503–509.