



**HAL**  
open science

## Cardiac molecular-acclimation mechanisms in response to swimming-induced exercise in Atlantic salmon.

Vicente Castro, Barbara Grisdale-Helland, Ståle J Helland, Jacob Torgersen, Torstein Kristensen, Guy Claireaux, Anthony P Farrell, Harald Takle

► **To cite this version:**

Vicente Castro, Barbara Grisdale-Helland, Ståle J Helland, Jacob Torgersen, Torstein Kristensen, et al.. Cardiac molecular-acclimation mechanisms in response to swimming-induced exercise in Atlantic salmon.. PLoS ONE, 2013, 8 (1), pp.e55056. 10.1371/journal.pone.0055056 . hal-00818112

**HAL Id: hal-00818112**

**<https://hal.univ-brest.fr/hal-00818112>**

Submitted on 26 Apr 2013

**HAL** is a multi-disciplinary open access archive for the deposit and dissemination of scientific research documents, whether they are published or not. The documents may come from teaching and research institutions in France or abroad, or from public or private research centers.

L'archive ouverte pluridisciplinaire **HAL**, est destinée au dépôt et à la diffusion de documents scientifiques de niveau recherche, publiés ou non, émanant des établissements d'enseignement et de recherche français ou étrangers, des laboratoires publics ou privés.

# Cardiac Molecular-Acclimation Mechanisms in Response to Swimming-Induced Exercise in Atlantic Salmon

Vicente Castro<sup>1,2</sup>, Barbara Grisdale-Helland<sup>3,4</sup>, Ståle J. Helland<sup>2,3,4</sup>, Jacob Torgersen<sup>1</sup>, Torstein Kristensen<sup>5</sup>, Guy Claireaux<sup>6</sup>, Anthony P. Farrell<sup>7</sup>, Harald Takle<sup>1,8\*</sup>

**1** Nofima AS, Ås, Norway, **2** Institute of Animal Sciences, Norwegian University of Life Sciences (UMB), Ås, Norway, **3** Aquaculture Protein Centre, Ås, Norway, **4** Nofima AS, Sunndalsøra, Norway, **5** Norwegian Institute of Water Research, Bodø, Norway, **6** Laboratoire des Sciences de l'Environnement Marin (LEMAR), Université de Bretagne Occidentale, & Unité de Physiologie Fonctionnelle des Organismes Marins, Ifremer, Plouzané, France, **7** Faculty of Land and Food Systems, & Department of Zoology, University of British Columbia, Vancouver, British Columbia, Canada, **8** AVS Chile SA, Puerto Varas, Chile

## Abstract

Cardiac muscle is a principal target organ for exercise-induced acclimation mechanisms in fish and mammals, given that sustained aerobic exercise training improves cardiac output. Yet, the molecular mechanisms underlying such cardiac acclimation have been scarcely investigated in teleosts. Consequently, we studied mechanisms related to cardiac growth, contractility, vascularization, energy metabolism and myokine production in Atlantic salmon pre-smolts resulting from 10 weeks exercise-training at three different swimming intensities: 0.32 (control), 0.65 (medium intensity) and 1.31 (high intensity) body lengths  $s^{-1}$ . Cardiac responses were characterized using growth, immunofluorescence and qPCR analysis of a large number of target genes encoding proteins with significant and well-characterized function. The overall stimulatory effect of exercise on cardiac muscle was dependent on training intensity, with changes elicited by high intensity training being of greater magnitude than either medium intensity or control. Higher protein levels of PCNA were indicative of cardiac growth being driven by cardiomyocyte hyperplasia, while elevated cardiac mRNA levels of MEF2C, GATA4 and ACTA1 suggested cardiomyocyte hypertrophy. In addition, up-regulation of EC coupling-related genes suggested that exercised hearts may have improved contractile function, while higher mRNA levels of EPO and VEGF were suggestive of a more efficient oxygen supply network. Furthermore, higher mRNA levels of PPAR $\alpha$ , PGC1 $\alpha$  and CPT1 all suggested a higher capacity for lipid oxidation, which along with a significant enlargement of mitochondrial size in cardiac myocytes of the compact layer of fish exercised at high intensity, suggested an enhanced energetic support system. Training also elevated transcription of a set of myokines and other gene products related to the inflammatory process, such as TNF $\alpha$ , NF $\kappa$ B, COX2, IL1RA and TNF decoy receptor. This study provides the first characterization of the underlying molecular acclimation mechanisms in the heart of exercise-trained fish, which resemble those reported for mammalian physiological cardiac growth.

**Citation:** Castro V, Grisdale-Helland B, Helland SJ, Torgersen J, Kristensen T, et al. (2013) Cardiac Molecular-Acclimation Mechanisms in Response to Swimming-Induced Exercise in Atlantic Salmon. PLoS ONE 8(1): e55056. doi:10.1371/journal.pone.0055056

**Editor:** Josep V. Planas, Universitat de Barcelona, Spain

**Received:** February 28, 2012; **Accepted:** December 19, 2012; **Published:** January 25, 2013

**Copyright:** © 2013 Castro et al. This is an open-access article distributed under the terms of the Creative Commons Attribution License, which permits unrestricted use, distribution, and reproduction in any medium, provided the original author and source are credited.

**Funding:** This study was funded by the Fishery and Aquaculture Industry Research Fund (FHF) and the Research Council of Norway (Grant number: 190067). The funders had no role in study design, data collection and analysis, decision to publish, or preparation of the manuscript.

**Competing Interests:** The authors have declared that no competing interests exist. Nofima AS is not a commercial company but a governmental own non-profit research institute. Nofima do independent research and this study was supported by two public funding bodies: the norwegian research council (NRC) and the fishery and aquaculture research fund (FHF).

\* E-mail: harald.takle@nofima.no

## Introduction

Aerobic exercise training imposes an intensity-dependent cardiac load in vertebrates in response to an increased need for internal oxygen transport. The cardiac growth in aerobically trained humans is typically associated with improved physical capacity [1–3]. Conversely, pathological cardiac growth occurs in response to volume overload in disease settings (e.g. hypertension), myocardial infarction and ischemia [4]. The fish cardiovascular system is similarly an important target for the training-induced effects, being plastic [5] and modulated by training intensity [6,7]. Cardiovascular improvements in fish include maximum oxygen consumption [7], maximum cardiac output [8,9], tissue capillarization [10,11], oxygen extraction by tissues [12], haematocrit [7,13,14], tissue oxidative capacity [8] and relative cardiac size

[5,15]. Clearly, exercise training in fish targets many same levels of the oxygen cascade as it does in mammals.

Cardiac mass, on which cardiac stroke volume depends, is highly plastic to environmental and physiological stressors in fish, e.g. sexual maturation, cold temperature acclimation and anemia [5,16–18]. For example, sexual maturation [19,20] and anemia conditions [21] triggered both cardiomyocyte enlargement (hypertrophy) and proliferation (hyperplasia), while exercise training triggered cardiac hyperplasia, as evidenced by elevated transcription of proliferating cell nuclear antigen (PCNA) in zebrafish (*Danio rerio*) [22]. In contrast, mammalian cardiomyocytes practically lose their ability to proliferate after birth, growing mainly through cellular hypertrophy [23] governed by the expression of transcription factors such as myocyte enhancer factor (MEF)2C, GATA4 and the homeobox protein NKX2.5

[24]. Thus, the cellular responses of fish and mammals to environmental stressors can differ considerably.

Exercise training in mammals elevates transcription of cardiac genes encoding proteins involved in the excitation–contraction (EC) coupling process and in the handling of  $\text{Ca}^{2+}$  fluxes required for contraction activation such as the voltage dependent L-type  $\text{Ca}^{2+}$  channel (dihydropyridine receptor; DHPR), the sarcoplasmic reticulum (SR)  $\text{Ca}^{2+}$  release channel (ryanodine receptor; RYR) and the SR  $\text{Ca}^{2+}$  ATPase (SERCA), responses that likely improve the contractile function of the myocytes [25–27]. However, to our knowledge, no information is published on the exercise training regulation of these molecules in cardiac muscle of fish. Nevertheless, there is good reason that certain proteins may be targeted. For example, an association exists between DHPR or RYR and skeletal muscle contractile performance [28–30]. Exercise training in fish improves capillarity, favouring oxygen diffusion to mitochondria in skeletal muscles [7,10,31,32], and stimulates erythropoiesis, as evidenced by increased haematocrit levels [14]. Such training effects are likely driven by vascular endothelial growth factor (VEGF), the most important angiogenic factor in vertebrates [33], and the principal regulator of erythropoiesis, erythropoietin (EPO), which was recently cloned in fish and was found to be mainly produced in the heart and not in the kidney, as for mammals [34].

Cardiac muscle of high performance fish such as tunas and salmonids, like humans, prefers lipids as a fuel under normal conditions [35,36]. Further, lipid use increases during aerobic swimming while the use of glucose remains limited [37]. Peroxisome proliferator activated receptor (PPAR) $\alpha$  is a key cardiac transcription factor regulating lipid catabolism pathways by inducing the transcription of genes such as *camitine palmitoyl-transferase 1 (CPT1)* [38]. PPAR $\gamma$  co-activator (PGC)1 $\alpha$  is a cardiac-enriched PPAR coactivator that directly activates PPAR $\alpha$ , boosting its effects at the same time of co-activating other transcription factors involved in mitochondrial biogenesis. Exercise-induced myokine regulation, a set of cytokines, may be another important molecular acclimation mechanism affecting cardiac performance because regular exercise training in mammals induces skeletal muscle myokine production and release [39]. A modulation in cardiac myokines production in response to training was recently shown for Atlantic salmon (*Salmo salar*) [40].

In view of the above, we hypothesized that the many pathways involved in strengthening the cardiovascular capacity are conserved among fishes and terrestrial vertebrates. Further, we hypothesized that exercise-induced activation of underlying gene transcription mechanisms must be dependent on the cardiac workload. To test our hypotheses, we trained Atlantic salmon pre-smolts at three different exercise intensities for 10 weeks and then analyzed key markers of pathways affecting the traits known to be involved in cardiomyocyte growth and proliferation, contractility, capillarization, oxygen transport, myokine production, energy metabolism and fuel preference.

## Results

### Cardiac Growth and Contractile Capacity

After 10 weeks of training, average mass and length of sampled fish were similar: 99.6 $\pm$ 5.7 g and 19.9 $\pm$ 0.33 cm for the control (C); 91.7 $\pm$ 1.7 g and 19.2 $\pm$ 0.16 cm for the medium intensity (M), and 92.8 $\pm$ 5.2 g and 19.6 $\pm$ 0.13 cm for the high intensity (H) groups, respectively ( $p > 0.05$ ). Yet, ventricular mass relative to body mass (RVM) of trained fish had grown more than control fish by 11.1% for M and 19.4% for H: RVM values were 0.087 $\pm$ 0.004%; 0.097 $\pm$ 0.007% and 0.104 $\pm$ 0.007% for C, M

and H, respectively. Hence, a clear tendency ( $p = 0.06$ , Student's *t*-test) existed for cardiac growth to be intensity-dependent between C and H.

To evaluate hyperplastic cardiac growth, ventricular myocyte proliferation was assessed by PCNA immunofluorescence and found to be  $\sim 7$  fold greater in H relative to C ( $p = 0.05$ ; Figure 1). Expression of ten genes directly related with processes of cardiac muscle growth, development, contraction machinery and EC coupling was assessed by qPCR to further define the molecular signature behind cardiac growth (Figure 2). The transcription levels of these markers tended to be higher in trained than control fish, suggesting hypertrophic cardiomyocyte growth had occurred as well (Figure 2A). The H regime triggered significant differences for the genes encoding MEF2C and actin alpha 1 (ACTA1) when compared to C. Conversely, the M regime triggered only up-regulated levels of GATA4 in comparison to C. Similarly, key marker genes associated with the contractile machinery, specifically those encoding DHPR, FK-506 binding protein (FKBP1B) and calsequestrin 1 (CALSEQ1), showed significantly higher transcription with the H regime compared to C (Figure 2B).

### Capillarization and Oxygen Carrying Capacity

Improvements to oxygen carrying capacity and the coronary vasculature would provide better cardiac oxygen and nutrient delivery. Five genes involved in oxygen transport and blood diffusion were studied by qPCR (Figure 3A; *inducible nitric oxide synthase -iNOS-* was undetectable). Transcription levels of *EPO* were significantly higher in ventricle of H-trained fish, while the *EPO receptor (EPOR)* was unchanged. Training significantly increased transcription levels of *VEGF* and its cell surface receptor *VEGF-R2* with the H regime compared to C. The spatial expression of VEGF was localized in the ventricular epi- and myocardium for both H and C regimes, while a difference in protein levels was not found by IF (Figure 3B).

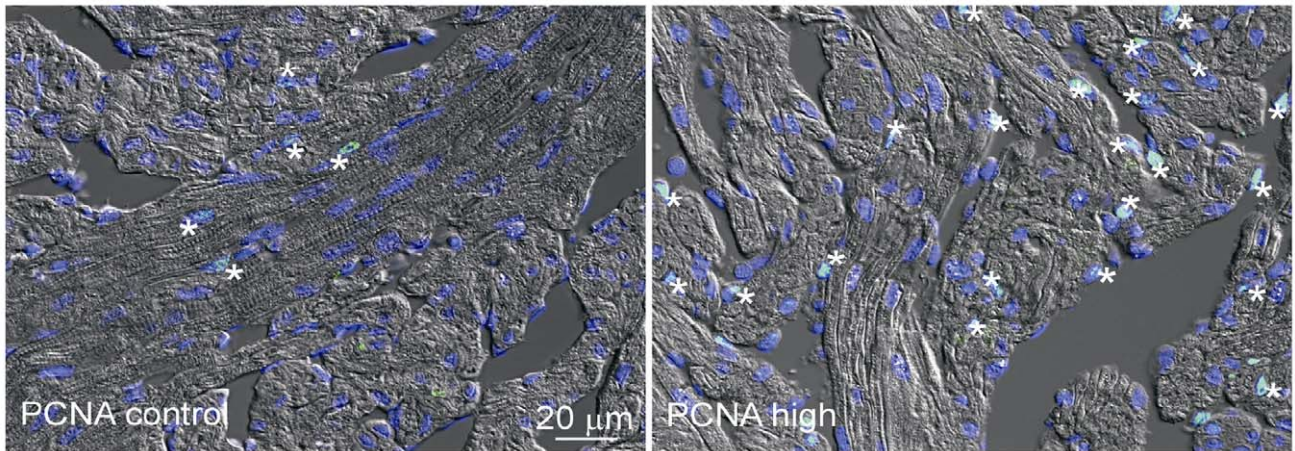
### Energy Metabolism

A greater cardiac oxidative capacity was indicated by the mitochondria area being significantly larger (46%) in H compared with C (1.23 $\pm$ 0.015  $\mu\text{m}^2$ ;  $n = 15620$  and 0.84 $\pm$ 0.09  $\mu\text{m}^2$ ;  $n = 17780$ , respectively). The mitochondrial to genomic DNA ratio (mtDNA/gDNA) was unaffected by exercise (Figure 4).

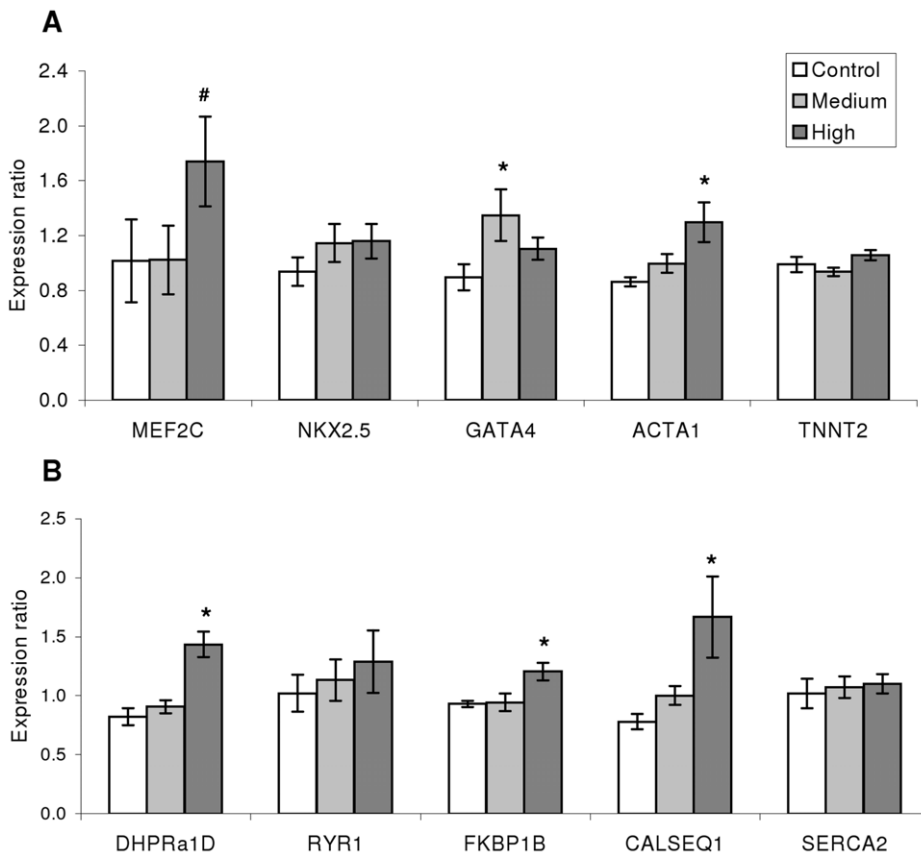
Insight into cardiac fuel preference was assessed using qPCR expression of 18 genes involved in the metabolism of lipids and glucose. Exercise training had a profound effect on the expression of those genes involved in lipid metabolism since 7 out of 10 genes were consistently up-regulated in H compared with C (Figure 5A). These genes included those encoding proteins promoting mitochondrial biogenesis and fatty acid oxidation such as PPAR $\alpha$ , PGC1 $\alpha$ , CPT1, and malonyl-CoA decarboxylase (MCD). Furthermore, mRNA of proteins participating in lipogenic pathways were also up-regulated by H training, including malonyl CoA-acyl carrier protein transacylase (MCAT), acetyl CoA carboxylase (ACC) and fatty acid synthase (FAS). In addition, two (*hexokinase (HK)* and *pyruvate dehydrogenase kinase (PDK3)*) out of eight genes involved in glucose metabolism were significantly up-regulated in the H regime compared to C (Figure 5B). In contrast, none of these genes were differentially expressed between M and C.

### Cardiomyokine Expression

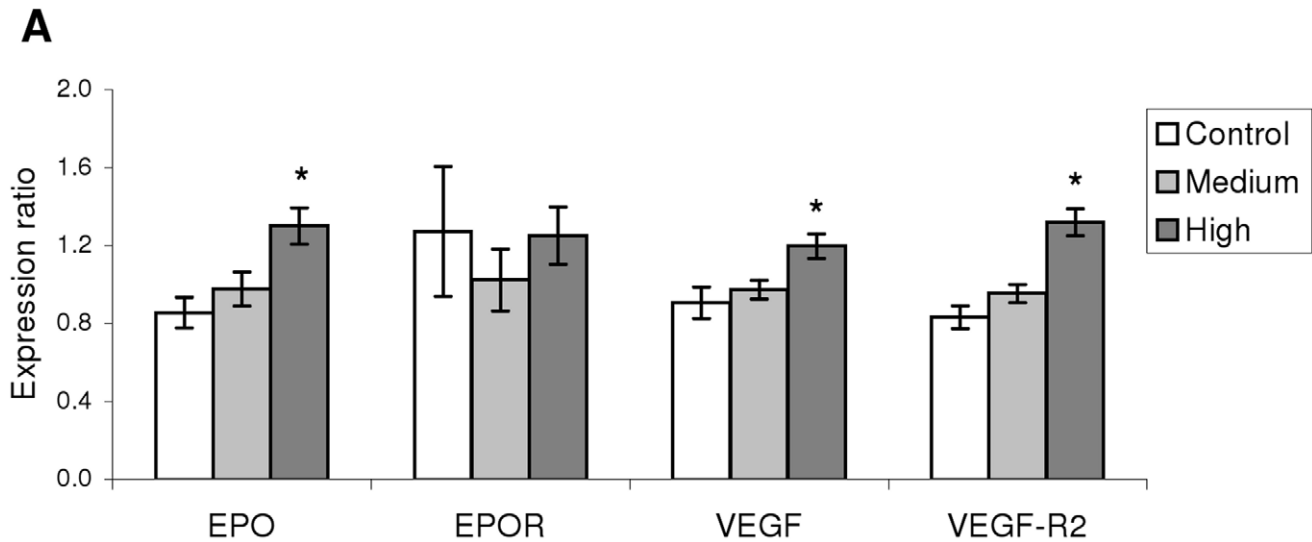
Aerobic exercise increased cardiac expression of pro- and anti-inflammatory cytokines in an intensity-dependent manner. Protein and mRNA levels of tumor necrosis factor (TNF) $\alpha$  were significantly up-regulated in H compared with C, as shown by IF and qPCR, respectively (Figures 6A & 6B). Further, IF analysis



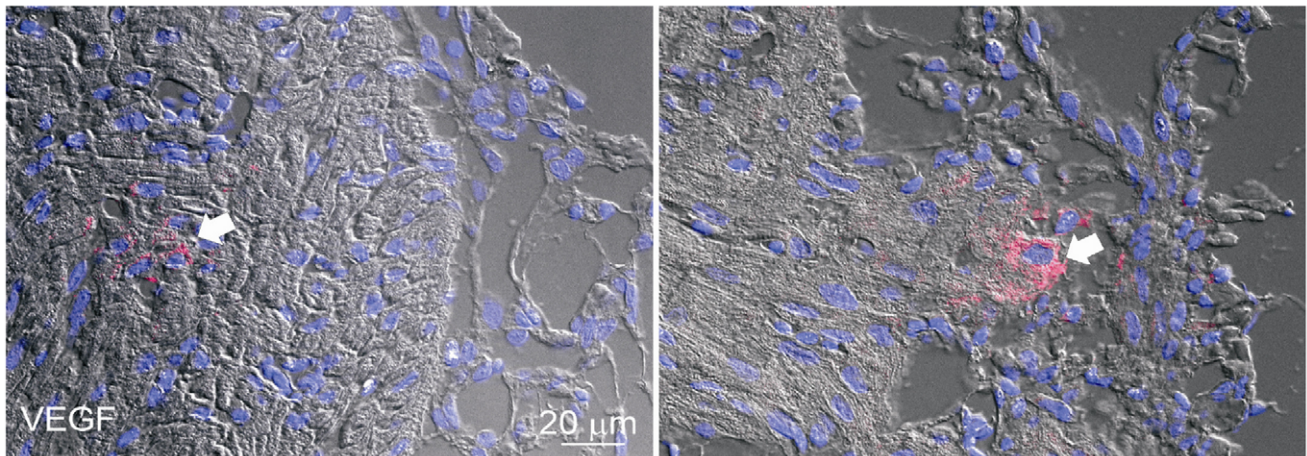
**Figure 1. Exercise training and cardiomyocyte proliferation.** Immunofluorescence detection of PCNA (green) in spongy myocardium. Control fish showed modest cell proliferation (\*) with an average of three positive cells per frame (left image). PCNA staining of exercised fish from the high intensity-training regime (right image) shows a considerable increase (20 positive cells per frame) in cell proliferation over specimen from the Control group. Nuclei are stained with DAPI (blue).  $n = 12/\text{group}$ . doi:10.1371/journal.pone.0055056.g001



**Figure 2. Cardiomyocyte growth and contractile capacity are affected by exercise.** Gene expression related to the growth and contractile capacity of Atlantic salmon cardiomyocytes was analyzed by qPCR. A: Genes related to cardiomyocyte growth. B: Genes involved in the EC-coupling process as well as in  $\text{Ca}^{2+}$  handling. \* denotes statistical difference ( $p < 0.05$ ; one-way ANOVA performed on  $\log_2$  transformed expression ratio values followed by Tukey's HSD;  $n = 9 - 12/\text{group}$ ) between either of the training regimes and the Control. # denotes significant difference between C and H (Students  $t$ -test;  $p < 0.05$ ). Bars represent SEM. MEF2C: Myocyte-specific enhancer factor 2C; GATA4: GATA binding protein 4; NKX2: NK2 homeobox 5; ACTA1: Actin; TNNT2: Troponin; DHPRA1D: Voltage dependent L-type  $\text{Ca}^{2+}$  channel alpha1D subunit (dihydropyridine receptor); RYR1: Sarcoplasmic reticulum  $\text{Ca}^{2+}$  release channel (ryanodine receptor) isoform1; FKBP1B: FK506 binding protein B; CALSEQ1: Calsequestrin 1; SERCA2: Sarcoplasmic reticulum  $\text{Ca}^{2+}$  ATPase 2. doi:10.1371/journal.pone.0055056.g002



## B



**Figure 3. Oxygen carrying and distribution capacity is affected by exercise training.** A: High intensity exercise training stimulated up-regulation of genes coding for EPO, involved in erythropoiesis, and for VEGF and VEGF receptor (VEGF-R2), which mediates angiogenesis. B: Immunofluorescence detection image of VEGF (arrows, red staining) showing its production in both the epicardium (right image) and compact myocardium (left image) suggesting the formation of new blood vessels. No apparent differences were found between high intensity trained and control fish (nuclei: blue (DAPI)). \* denotes statistical difference ( $p < 0.05$ ; one-way ANOVA performed on log<sub>2</sub> transformed expression ratio values followed by Tukey's HSD;  $n = 9-12$ /group) between either of the training regimes and the Control. Bars represent SEM. ER: Expression ratio. EPO: erythropoietin; EPOR: EPO receptor; VEGF: Vascular endothelial growth factor; VEGF-R2: VEGF receptor 2.  
doi:10.1371/journal.pone.0055056.g003

allocated  $TNF\alpha$  production to the cardiomyocytes and not to potential resident leukocytes. Another significantly up-regulated pro-inflammatory-related gene in H was the *interleukin (IL)6 receptor subunit alpha (IL6R $\alpha$ )*, while M triggered elevated transcription of *cyclooxygenase (COX)2*. Within the genes with anti-inflammatory properties, H significantly induced the transcription of *TNF decoy receptor* and *IL1 receptor antagonist (IL1RA)*. Further, *IL15*, which has been linked to muscle growth [41], was up-regulated by H (Figure 6C).

### Exercise Intensity

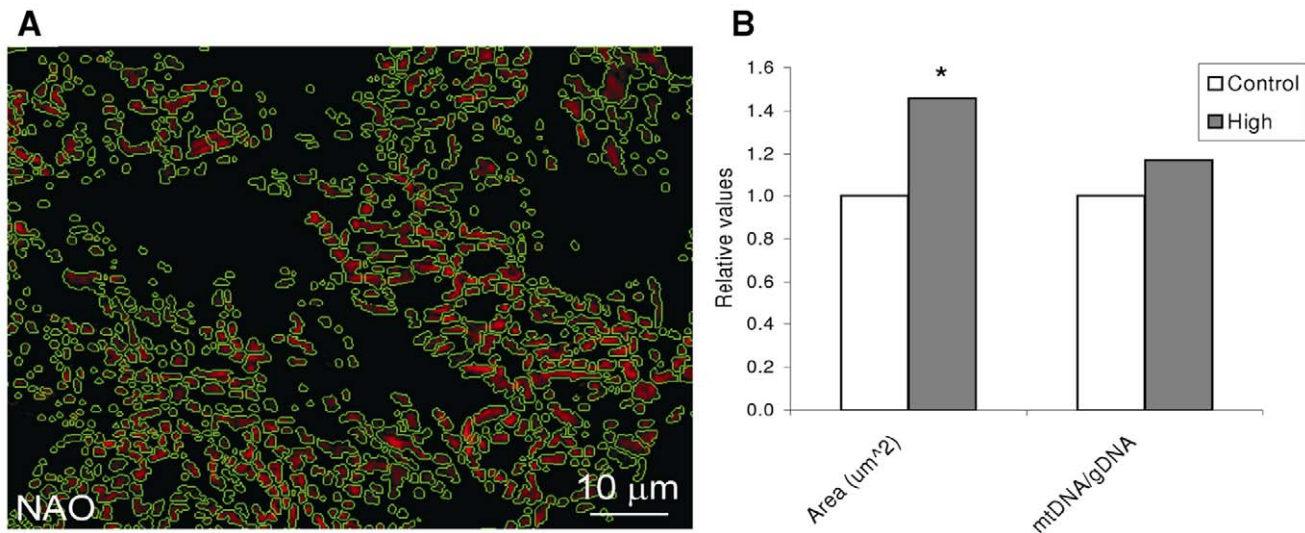
Overall, intensity of the training regime was directly related to the magnitude in the gene expression response (Pearson correlation;  $r = 0.99$ ;  $p = 0.032$ ). Furthermore, significant differences were found between the three groups ( $p < 0.0001$ ), with M and H

displaying a 10.9% and 37.8% higher gene expression than C, respectively.

### Discussion

In this study, we demonstrate that genes and proteins known to be key components of the molecular signature for mammalian cardiac growth stimulated by exercise also underlie the exercise-induced responses of the Atlantic salmon heart.

Training intensity influenced cardiac growth and gene expression, with lower values in C, a low-to-moderate effect in M and higher magnitude in H. While intense training has previously triggered cardiac improvements in mammals and fish, those that are not sufficiently intense or too short may not elicit cardiovascular changes [7,42,43]. Optimal effects of exercise training in



**Figure 4. Exercise effects on mitochondrial size and density.** A: Fluorescence microscopy of Acridine orange 10-nonyl bromide (NAO) stained mitochondria (pseudo coloured red) in spongy myocardium. The segmentation masks are shown as green lines around the mitochondria. B: Quantification of fluorescence intensity inside the segmentation masks showed that mitochondrial area within the cardiomyocytes of Atlantic salmon was significantly increased by the high-intensity training regime (approx. 16000 mitochondria from sections of 5 and 6 hearts from control and high-intensity regimes, respectively). The number of mitochondria per cell though, was not significantly different as shown by that the ratio between mitochondrial DNA and genomic DNA (mtDNA/gDNA). \*: Student's *t*-test  $p < 0.05$ , performed on metric and  $\log_2$ ER values for area and mtDNA/gDNA respectively.  $n = 12$ /group.  
doi:10.1371/journal.pone.0055056.g004

salmonids, including growth, reduced stress and disease resistance, are apparently achieved at swimming speeds between 1 and 1.5 body lengths (BL)  $s^{-1}$  [15,40,44], and so our significant effects with the H-training regime (1.31 BL  $s^{-1}$ ) are in line with previous studies, and add a molecular dimension to the training effects.

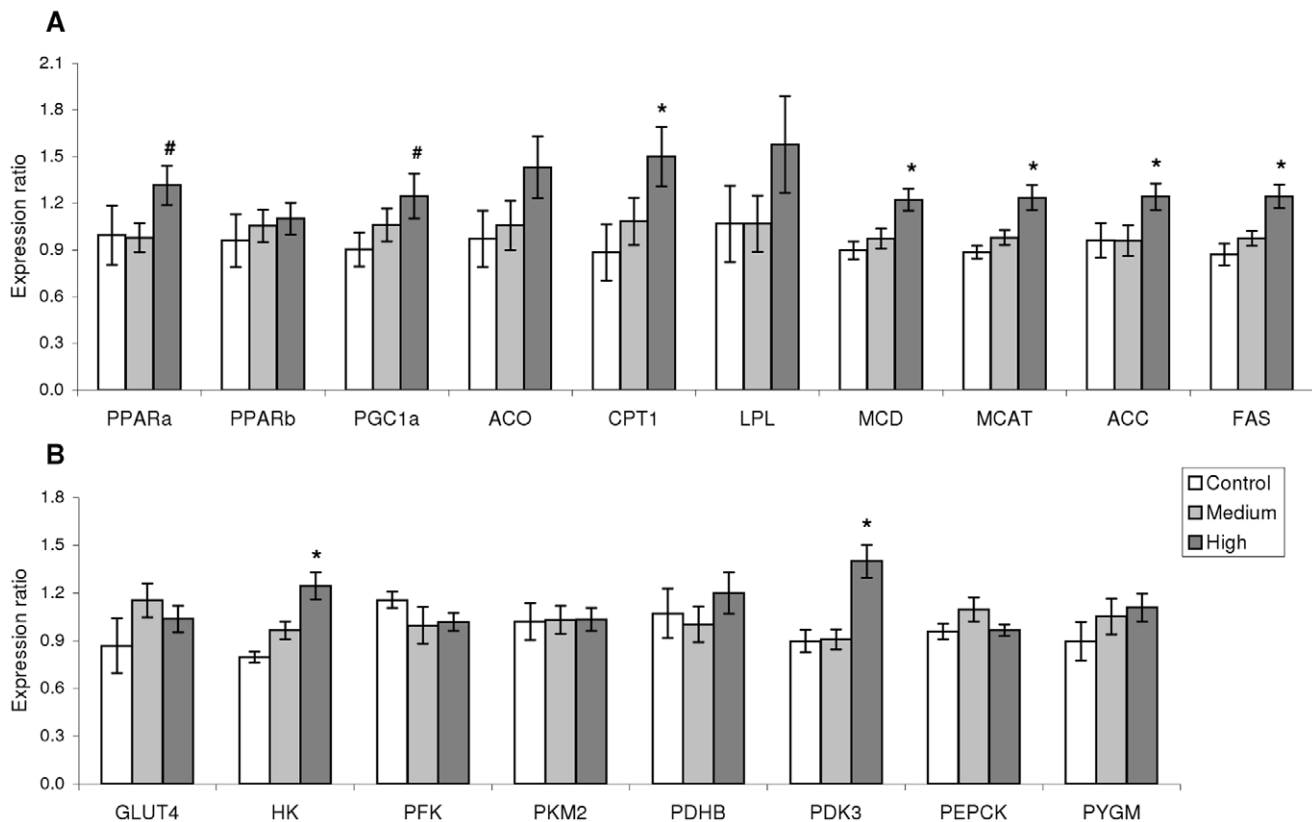
Fish robustness is thought to be enhanced by a relatively larger cardiac mass, perhaps improving cardiovascular capacity to satisfy the demands for simultaneous swimming and growth. Indeed, better swimmers and wild fish have a larger RVM. Here, the 19.4% RVM increment for the H regime is generally higher than in previous reports for exercise training in salmonids [7,13,45], though studies have found the opposite result [46]. We suggest that training-induced cardiac enlargement involved a mixture of hyperplasia and hypertrophy, given the higher protein levels of PCNA and the higher transcript amounts of the morphogenic- and hypertrophic-related genes *MEF2C*, *GATA4* and *ACTA1*. Cardiac growth in salmonids can also occur via both above-mentioned mechanisms in response to anemia or sexual maturation [19–21]. We did not attempt to resolve sexual dichotomy in training cardiac effects, but such differences should not be excluded. However, an enlarged heart working harder during exercise necessarily requires an improved contractile and metabolic capacity. Several observations were consistent with such thinking.

In mammals, improved contractile capacity is an important associated feature of physiological cardiac growth and is reflected by higher expression of  $Ca^{2+}$  channels and a better  $Ca^{2+}$  homeostasis [4,47]. Similarly, the H regime triggered higher transcription activity of genes involved in  $Ca^{2+}$  handling during EC coupling. Indeed, increased transcription of *FKBP1B* and *CALSEQ1* suggested higher reliance on SR-stored  $Ca^{2+}$  to support the higher cardiac contractility in the greater swimming activity of the H regime. In cardiac muscle, FKBP1B is a RYR modulator, while CALSEQ1 is the most important  $Ca^{2+}$  binding protein inside the SR [48]. While increased reliance on SR- $Ca^{2+}$  has been previously shown for cold acclimation in salmonids [49–51], the

present work is the first to suggest a similar response in response to exercise training. It must be noted that these results may also be reflective of an increased protein turnover due to exercise-induced cellular damage or increased activity.

The working myocardium needs oxygen and the coronary circulation to the compact layer of ventricle in salmon ensures delivery of freshly oxygenated blood to the working heart during intensive exercise [8]. The up-regulated mRNA levels of both VEGF and its receptor between H and C suggests increased cardiac capillarization with exercise training, especially since VEGF protein expression was localized to the myocardium even though IF did not resolve differences in VEGF expression. In mammals, exercise-induced VEGF and VEGF-R mRNA and protein levels are associated with amelioration of the ageing-related decrease in cardiac capillarization and blood supply [52–54]. Furthermore, higher levels of EPO mRNA in the H-trained group suggest an increased hematopoietic capacity, which in turn suggests a molecular mechanism underlying previously observed increases in haematocrit, haemoglobin concentration and blood oxygen carrying capacity in exercise-trained teleosts [15]. Similarly, EPO production is induced in response to exercise training in mammals, and is further associated with increased lipid metabolism, muscle hypertrophy and capillarization [55–58].

Larger cardiac mitochondrial size of H-trained fish further suggested improved respiratory capacity, while higher transcript abundance of PPAR $\alpha$ , PGC1 $\alpha$ , CPT1 and MCD suggests greater cardiac reliance on lipids oxidation for energy generation. PPAR $\alpha$  and PGC1 $\alpha$  are key drivers of mitochondrial biogenesis and  $\beta$ -oxidation [59,60], while PGC1 $\alpha$  appears to be a key mediator of several of the beneficial effects of exercise in mammals [61]. Conversely, PPAR $\alpha$  and PGC1 $\alpha$  transcription is repressed in pathological mammalian cardiac growth [38]. Increased mRNA expression of CPT1, whose transcription is stimulated by PPAR $\alpha$ , indicates higher transport of long-chain fatty acids into the mitochondria [59]. MCD converts malonyl-CoA into acetyl-CoA,



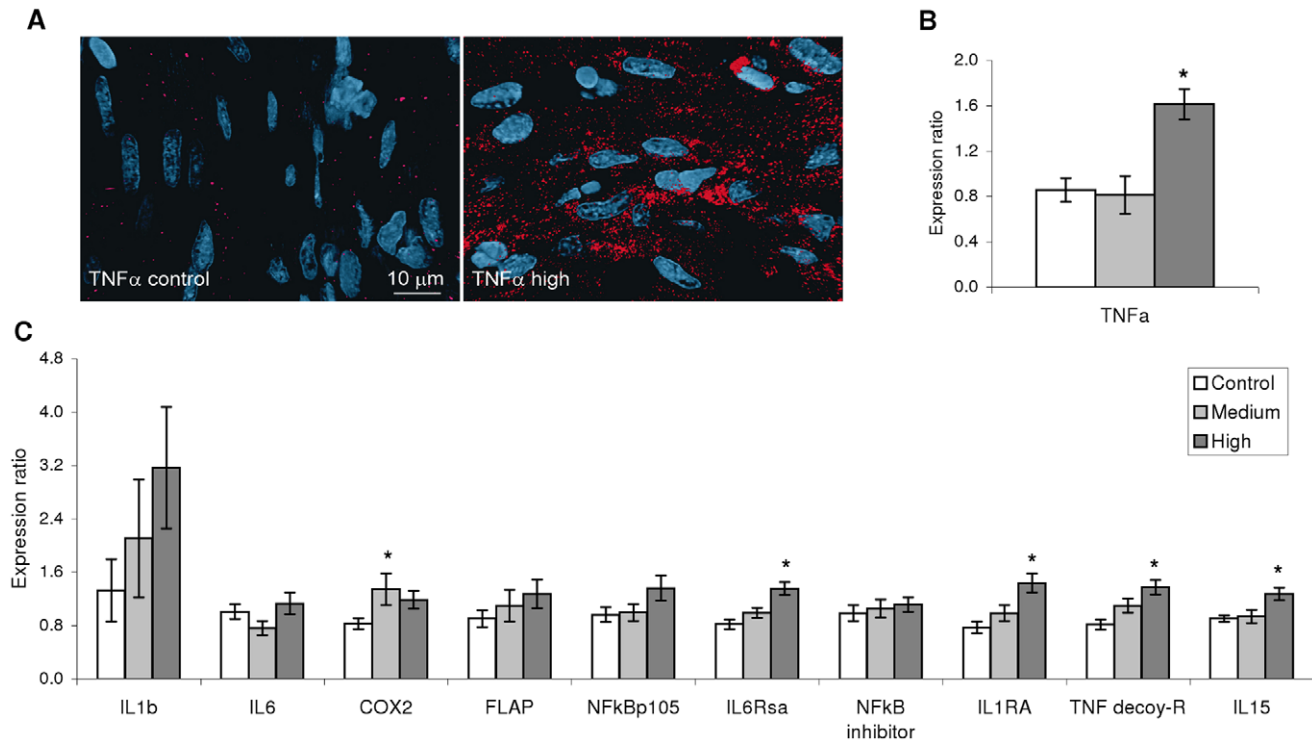
**Figure 5. Exercise affects cardiac metabolism.** A: A strong trend towards up-regulation of genes participating in the metabolism of lipids was seen only for the high-intensity regime compared with control, while the metabolism of carbohydrates (B) was not necessarily affected. \* denotes statistical difference ( $p < 0.05$ ; one-way ANOVA performed on log<sub>2</sub> transformed expression ratio values followed by Tukey's HSD;  $n = 9-12$ /group) between either of the training regimes and the Control. # denotes significant difference between C and H (Students *t*-test;  $p < 0.05$ ). Bars represent SEM. ER: Expression ratio. PPARa: Peroxisome proliferator activated receptor (PPAR) $\alpha$ ; PPARb: PPAR $\beta$ ; PGC1a: PPAR $\gamma$  coactivator 1 $\alpha$ ; ACO: Acyl-CoA oxidase; CPT1: Carnitine palmitoyltransferase 1; LPL: Lipoprotein lipase; MCD: Malonyl-CoA carboxylase; MCAT: Malonyl-CoA acyl carrier protein transacylase; ACC: Acetyl-CoA carboxylase; FAS: Fatty acid synthase; GLUT4: Glucose transporter type 4; HK: Hexokinase; PFK: Phosphofructokinase; PKM2: Pyruvate kinase isoform 2; PDHB: Pyruvate dehydrogenase E1 component subunit  $\beta$ ; PDK3: Pyruvate dehydrogenase kinase 3; PEPCK: phosphoenolpyruvatecarboxykinase; PYGM: Glycogen phosphorylase. doi:10.1371/journal.pone.0055056.g005

thereby reducing the inhibitory effects that malonyl-CoA imposes on  $\beta$ -oxidation and providing acetyl-CoA to the citric acid cycle. Curiously, up-regulated expression of genes related to lipogenesis, including *MCAT*, *ACC* and *FAS* which are involved in fatty acids synthesis from acetyl-CoA and malonyl-CoA, may be interpreted as a fine-tuning mechanism to build up intramuscular lipid reserves as well as increase their rate of oxidation. Similarly, molecular signs of increased cardiac lipid  $\beta$ -oxidation are reported for rainbow trout in response to exercise [8,9], sexual maturation [20] and cold acclimation [62], states that also induce cardiac enlargement.

Exercise training had weak effects on the transcription of enzymes involved in glucose metabolism with only *HK* and *PDK* genes being significantly up-regulated by training. Moreover, they metabolically counteract each other, with *HK* transforming glucose into glucose 6-phosphate (G6P) and favouring glycolysis, while *PDK* inactivates pyruvate dehydrogenase through phosphorylation, slowing glycolytic formation of acetyl-CoA. Farrell et al. [8] found that training induced elevated levels of enzymes involved in both lipid and glucose oxidation in heart of trained rainbow trout, suggesting an increased dependence on both fuels to cope with the higher demand.

The H-training regime induced cardiac expression of myokines and other inflammation-related factors. Transcriptional regulation

of cardiac myokines in response to six weeks of de-training was previously demonstrated in Atlantic salmon [40], with down-regulation of *TNF $\alpha$* , *IL1 $\beta$*  and *IL6* being associated with higher survival in a viral disease challenge test. Mammalian skeletal muscle is heavily involved in the production and release of myokines, which is further modulated by exercise training. A principal actor is *IL6*, which is induced by exercise and plays a fundamental role in both metabolic and anti-inflammatory mechanisms [39,63]. Here, the *IL6* receptor was similarly up-regulated by training. We also found higher cardiac levels of *TNF $\alpha$*  and *COX2*. *COX2* is central to production of prostaglandins, inflammatory mediators of lipid origin [64]. *TNF $\alpha$*  and *COX2* elevated expression could also be reflective of an oxidative environment caused by exercise [65–67]. The exercise-induced expression of the anti-inflammatory genes *IL1RA* and *TNF decoy receptor* may have occurred in response to the presence of pro-inflammatory molecules as they block the inflammatory effects of *IL1 $\beta$*  and *TNF $\alpha$* , respectively [68]. Thus, the overall net result of myokine activation in the exercised heart may be related to metabolic effects such as muscle growth and lipid oxidation. In light of the present results, as well as others studies showing the production of myokines in the cardiac muscle in response to different stimuli [69–73], we suggest that the term “cardiomyokine” should be used when referring to cytokines/myokines that



**Figure 6. Cardiac inflammatory response to exercise training.** Both protein (A) and transcript (B) levels of TNF $\alpha$  were significantly upregulated by the high-intensity training regime. A: Immunofluorescence detection of TNF $\alpha$  (red) in cardiomyocytes of Control (left picture) and High intensity (right) shows how TNF $\alpha$  is strongly induced by exercise training in the compact myocardium of Atlantic salmon ( $n = 12/\text{regime}$ ). Nuclei were labelled with DAPI (blue). B: qPCR revealed mRNA levels of TNF $\alpha$  being up-regulated by the high-intensity regime compared with control. C: Expression of a set of genes associated with both pro- and anti-inflammatory mechanisms was consistently induced by the High intensity regime, while expression of only two genes was significantly stimulated by Medium intensity training in relation to Control. \* denotes statistical difference ( $p < 0.05$ ; one-way ANOVA performed on log<sub>2</sub> transformed expression ratio values followed by Tukey's HSD;  $n = 9 - 12/\text{group}$ ). Bars represent SEM. ER: Expression ratio. IL1b: Interleukin 1 $\beta$ ; IL6: Interleukin 6; COX2: Cyclooxygenase 2; FLAP: 5-lipoxygenase-activating protein; NFkBp105: Nuclear factor  $\kappa$ Bp105; NFkB inhibitor: Nuclear factor  $\kappa$ B inhibitor  $\alpha$ 1; IL6Rsa: IL6 receptor subunit  $\alpha$ ; IL1RA: IL1 receptor antagonist; TNF decoy-R (receptor); IL15: Interleukin 15. doi:10.1371/journal.pone.0055056.g006

are directly expressed and produced by the cardiac muscle cells. Further research still is needed to establish if these molecules are released to the extracellular space.

In conclusion, we document that aerobic exercise training induces a range of cardiac molecular responses. These are similar to those underlying physiological cardiac growth in mammals, validating our hypothesis of a conserved exercise-induced molecular cardiac response within lower and higher vertebrates. The reported molecular cardiac signature suggests an exercise-induced strengthening of the heart. Similar responses have been seen when cardiac enlargement is induced in fish by other means other than exercise training. We suggest cardiac enlargement involved a mixture of cardiomyocyte enlargement and proliferation. Our gene expression results further imply that this was associated with a more effective contractile machinery, a higher capacity for delivering oxygen to the heart and a greater reliance on lipid oxidation in enlarged mitochondria to satisfy the increased energetic requirements imposed by exercise. Finally, the exercise-induced responses were manifested in an intensity-dependent fashion.

## Materials and Methods

### Experimental Fish

Juvenile Atlantic salmon belonging to the Salmobreed strain were produced and reared at Nofima AS, Sunndalsøra, Norway. Freshwater stage experimental procedures took place on the same

research station, which is an approved facility under the Norwegian Animal Research Authority (NARA). Stunning and sampling of fish was done in agreement with the Norwegian regulations. As fish were exposed to different sustainable water velocities that did not induce an un-physiological state, no specific NARA approval was required according to Dr. G. Baeverfjord, member of the national NARA board and local NARA officer at Nofima AS.

### Exercise Training Regimes

Before the start of the trial, all fish were tagged (Passive Integrated Transponder (PIT), Glass tag Unique 2.12 $\times$ 12 mm, Jojo Automasjon AS, Sola, Norway). After individual measurements of body mass ( $40.7 \pm 0.2$  g) and length ( $15.0 \pm 0.3$  cm), 77–86 fish were set in each of 9 cylindrical tanks (500 l; 82 cm in diameter) and allowed to acclimate for one week under minimum disturbance prior beginning of the experimental trial. The center of each experimental tank was fitted with a plastic pipe (31.5 cm diameter), which reduced the area in the tank with lowest water speed. A frequency-controlled pump (Hanning Elektro Werke, PS 18–300; Oerlinghausen, Germany) directed the water current and a wire mesh fence, attached between the pipe and the edge of the tank, prevented the fish from drifting backwards. The water speeds were calibrated by using the average speed measured at 12 points in the tank (four horizontal locations and three depths at each location (Höntzsch HFA propeller, Waiblingen, Germany with



HLOG software). Fish were subjected for 10 weeks to one of three swimming-induced training regimes. Each regime was run in triplicate tanks with constant water speeds of either 5.7 (C), 11.5 (M) and 23 (H)  $\text{cm s}^{-1}$ . At start of the experiment, these speeds were equivalent to 0.38, 0.77 and 1.53  $\text{BL s}^{-1}$  for C, M and H, respectively. Due to increases in fish length during the trial, relative water speeds were slightly reduced towards the end of training. Because fish had a similar length across the three groups, this reduction in relative water speed was similar among groups (75% of initial speed in  $\text{BL s}^{-1}$ ). Using average fish length during the trial, relative water speeds averaged 0.32 (C), 0.65 (M) and 1.31 (H)  $\text{BL s}^{-1}$  (Figure 7). To stimulate smoltification, fish were exposed to a short daylight regime (12–12 Light-Dark) the first 6 weeks, followed by continuous light (24 L) the remaining 4 weeks. Tanks were supplied with fresh water and temperature was measured daily ( $10.5 \pm 0.8^\circ\text{C}$ ). Oxygen saturation was measured weekly and was maintained over 85% with oxygen supplementation. Measurement of ATPase in gills ( $n = 10$ ) sampled from each group was conducted in a commercial laboratory, Havbruksinstituttet AS, Bergen, Norway, and confirmed that all fish were sampled within the smolt-window (data not shown).

### Relative Ventricular Mass (RVM)

At the end of the exercise-training period, a total of 30 fish per training regime were killed by a blow to the head; body mass and length were measured, and hearts were dissected out. Ventricles were weighed on an analytical scale after removal of the *atrium*, the *bulbus arteriosus* and any excess blood. RVM was calculated as ventricle weight (g)  $\cdot$  [body mass (g)]<sup>-1</sup>  $\cdot$  100.

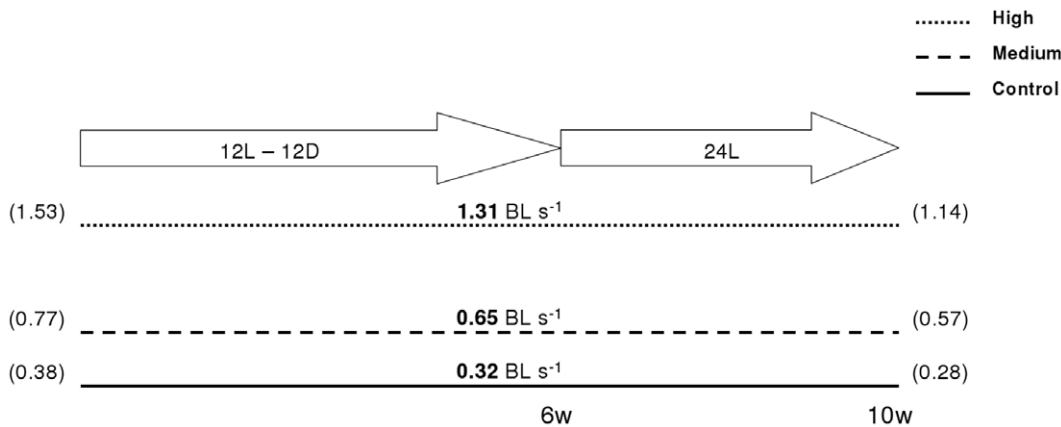
### Gene Expression

A total of 44 genes were analyzed for expression levels by quantitative real-time RT-PCR (qPCR). For this, ventricle samples ( $n = 12/\text{regime}$ ) were sampled at the end of the training experiment as previously described, and immediately frozen on liquid nitrogen prior to storage at  $-80^\circ\text{C}$  until analyzed. Total RNA was extracted from half a ventricle using TRIzol and purified with PureLink RNA Mini Kit (Invitrogen, Carlsbad, CA, USA) including on-column DNA digestion (RNase-free DNase set, Qiagen, MD, USA), following manufacturers guidelines and RNA concentration was measured using NanoDrop 1000

spectrophotometer (Thermo Fischer Scientific, Waltham, MA, USA). Synthesis of cDNA was performed on 0.5  $\mu\text{g}$  of total RNA using TaqMan® Reverse Transcription reagents (Applied Biosystems, Foster City, CA, USA) and primed with a mix of oligo dT and random hexamers. Reactions took place on 96 well optical plates on a LightCycler® 480 (Roche Diagnostics, Mannheim, Germany) using 2X SYBR Green Master mix (Roche), 5  $\mu\text{l}$  of cDNA and primer concentrations of 0.42  $\mu\text{M}$  each (final reaction volume was 12  $\mu\text{l}$ ). Thermal cycling protocol was as follows: 5 min pre-incubation at  $95^\circ\text{C}$ , followed by 45 amplification cycles of  $95^\circ\text{C}$  for 10 s,  $60^\circ\text{C}$  for 15 s and  $72^\circ\text{C}$  for 15 s, followed by a melting curve protocol ( $95^\circ\text{C}$  for 5 s, continuous increase from  $65^\circ\text{C}$  to  $97^\circ\text{C}$ ) for amplicon specificity assessment. Difference in gene expression ratio (ER) between the groups was assessed by the method described by Pfaffl et al. [74], normalized using an averaged value from two genes, *elongation factor 1 $\alpha$*  and *18S rRNA*. PCR efficiency was assessed by six 10-fold serial dilutions of pooled sample templates for each primer pair. The cDNA was diluted 10-fold before use for all the genes, except for the abundantly expressed *18S*, which was diluted 1000-fold. All primers were designed using ePrimer3 from the EMBOSS online package [75] and synthesized by Invitrogen (Table S1).

### Mitochondrial Quantification

The ratio of mitochondrial DNA to genomic DNA (mtDNA/gDNA) was calculated for the C and H regimes by qPCR, as an estimate of the number of mitochondria per cardiac cell. The same individual fish used for the gene expression study were analyzed ( $n = 12/\text{regime}$ ). Total DNA was isolated using Dneasy kit (Qiagen) according to manufacturer instructions and diluted 200-fold before use. Concentration was measured on NanoDrop 1000 spectrophotometer (Thermo Fischer Scientific) and quality was checked on a 1% agarose gel. The relative difference in the abundance of mitochondria per cell was calculated after qPCR amplification of specific mitochondrial (D-loop) and nuclear (*myoD*) DNA sequences. For the latter, primers spanned an intron-exon region (Table S1). Comparisons among groups, as well as the amplification reactions and primer efficiency calculations were performed similarly to the gene expression analyses described above, but using *myoD* as reference gene against which the levels of D-loop were normalized and quantified.



**Figure 7. Exercise training experimental design.** Atlantic salmon pre-smolts were exercise trained at different relative water speeds (body lengths per second ( $\text{BL s}^{-1}$ )) for ten weeks (w). Throughout the trial, swimming speeds experienced a constant decrease due to fish length increase. Speeds shown in the middle of the figure (bold) are average, while start and end speeds are shown in the left and right, respectively (brackets). The first six weeks took place under a short day-light photoregime (12L-12D), while the last 4 weeks were on a continuous light photoregime (24 L) to induce the smoltification process.

doi:10.1371/journal.pone.0055056.g007

## Immunofluorescence and Mitochondrial Staining

Hearts sampled for immunofluorescence (IF) were embedded in paraffin and 7  $\mu\text{m}$  sections were prepared. After paraffin removal and dehydration, microwave facilitated antigen retrieval was carried out for 20 min in 10 mM Tris-HCl pH 10. After rinsing in PBST (phosphate buffered saline with 0.02% Tween 20), the tissue sections were permeabilized for 20 min in 1 $\times$ PBST with 1% Triton X100. Blocking was carried out for 2 h in 1 $\times$  PBST with 5% skimmed dry milk. Polyclonal TNF $\alpha$  (100-fold dilution; obtained according to the method described in Bethke et al. [76] and provided by L. Mercado at Pontificia Universidad Catolica de Valparaiso, Chile) PCNA (70-fold dilution; PMID 17349083; Zymed Laboratories Inc., CA, USA) and VEGF (50-fold dilution; PMID 15177948; Santa Cruz Biotechnology, CA, USA) primary antibodies were diluted in 1 $\times$ PBST with 2% dry milk and 0.01% Triton X 100 and applied to the sections over night at 4°C. After extensive washing in 1 $\times$ PBST, the sections were incubated for 2 h with Alexa conjugated secondary antibodies diluted 200-fold (Invitrogen, Carlsbad, CA, USA). Finally, the sections were mounted after several washes in 1 $\times$ PBST and nuclear staining with DAPI. All images were captured using a Zeiss Axioplan Z1 microscope and post processed using the Zeiss Axiovision software. Identical exposure and image manipulation settings were applied to the images to enable comparison between swimming regimes. For visualization of TNF $\alpha$ , image stacks were deconvolved using an iterative algorithm in the Axiovision software.

Staining of cardiolipin in the mitochondrial membranes was carried out using 10-nonyl acridine orange (NAO; PMID 16172211). Briefly, paraffin was removed from 3  $\mu\text{m}$  sections before rehydration and permeabilization with 1% Triton X100 in 1 $\times$ PBST. Quenching of auto fluorescence was achieved by incubating the sections for 2 min in 0.1% Sudan black dissolved

in 70% ethanol. After washing in 1 $\times$ PBST, the sections were incubated for 10 min in 10  $\mu\text{M}$  NAO diluted in 1 $\times$ PBST, before washing and mounting. A total of 17700 and 15600 mitochondria from the control (n = 5) and exercised fish (n = 6), respectively, were analyzed for fluorescence intensity and size using a semi-automatic script which isolated the mitochondria from the background using fluorescence intensity and size segmentation.

## Statistics

Statistical analyses among the different groups were assessed by analysis of variance (ANOVA) and comparison between groups with Tukey's HSD post-hoc test. Student's *t*-test was performed between C and H groups for those analyses on which only these two groups were of interest (*a priori* comparisons for mtDNA/gDNA ratio, mitochondrial area, immunofluorescence and RVM). We have further used Student's *t*-test between C and H groups for those highly interesting genes on which p-value after ANOVA was close to significance ( $0.05 < p < 0.08$ ). Correlation between training intensity, RVM and gene expression was assessed by Pearson's *r* (SAS 9.1; SAS Institute Inc., NC, USA). Differences and correlations were considered significant at  $p < 0.05$ .

## Supporting Information

**Table S1** Genes and primer sequences used for the qPCR analyzes. (DOC)

## Author Contributions

Conceived and designed the experiments: HT BGH SH GC AF. Performed the experiments: VC BGH SH HT TK JT. Analyzed the data: VC BGH JT HT. Contributed reagents/materials/analysis tools: JT. Wrote the paper: VC BGH SH JT TK GC AF HT.

## References

1. Ellison GM, Waring CD, Vicinanza C, Torella D (2011) Physiological cardiac remodeling in response to endurance exercise training: cellular and molecular mechanisms. *Heart* 98: 5–10.
2. Hegglund J, Nilsberg GE, Hoff J, Morken G, Helgerud J (2011) Effects of high aerobic intensity training in patients with schizophrenia-A controlled trial. *Nord J Psychiat* 65: 269–275.
3. Helgerud J, Rodas G, Kemi OJ, Hoff J (2011) Strength and endurance in elite football players. *Int J Sports Med* 32: 677–682.
4. Bernardo BC, Weeks KL, Pretorius L, McMullen JR (2010) Molecular distinction between physiological and pathological cardiac hypertrophy: Experimental findings and therapeutic strategies. *Pharmacol Therapeut* 128: 191–227.
5. Gamperl AK, Farrell AP (2004) Cardiac plasticity in fishes: environmental influences and intraspecific differences. *J Exp Biol* 207: 2539–2550.
6. Khovanskiy IY, Natochin YV, Shakhmatova YI (1993) Effect of physical exercise on osmoregulatory capability in hatchery-reared juvenile chum salmon, *Oncorhynchus keta*. *J Ichthyol* 33: 36–43.
7. Gallagher PE, Thorarensen H, Kiessling A, Farrell AP (2001) Effects of high intensity exercise training on cardiovascular function, oxygen uptake, internal oxygen transport and osmotic balance in chinook salmon (*Oncorhynchus tshawytscha*) during critical speed swimming. *J Exp Biol* 204: 2861–2872.
8. Farrell AP, Johansen JA, Steffensen JF, Moyes CD, West TG, et al. (1990) Effects of exercise training and coronary ablation on swimming performance, heart size, and cardiac enzymes in rainbow trout, *Oncorhynchus mykiss*. *Can J Zool* 68: 1174–1179.
9. Farrell AP, Johansen JA, Suarez RK (1991) Effects of exercise-training on cardiac-performance and muscle enzymes in rainbow trout, *Oncorhynchus mykiss*. *Fish Physiol Biochem* 9: 303–312.
10. Davie PS, Wells RMG, Tetens V (1986) Effects of sustained swimming on rainbow trout muscle structure, blood oxygen transport, and lactate dehydrogenase isozymes: Evidence for increased aerobic capacity of white muscle. *J Exp Zool* 237: 159–171.
11. Sanger AM, Potscher U (2000) Endurance exercise training affects fast white axial muscle in the cyprinid species *Chalcalburnus chalcoides mento* (Agassiz, 1832), cyprinidae, teleostei. *Basic Appl Myol* 10: 297–300.
12. Farrell AP, Clutterham SM (2003) On-line venous oxygen tensions in rainbow trout during graded exercise at two acclimation temperatures. *J Exp Biol* 206: 487–496.
13. Hochachka PW (1961) The effect of physical training on oxygen debt and glycogen reserves in trout. *Can J Zool* 39: 767–776.
14. Thorarensen H, Gallagher PE, Kiessling AK, Farrell AP (1993) Intestinal blood-flow in swimming chinook salmon *Oncorhynchus tshawytscha* and the effects of hematocrit on blood-flow distribution. *J Exp Biol* 179: 115–129.
15. Davison W (1997) The effects of exercise training on teleost fish, a review of recent literature. *Comp Biochem Phys A* 117: 67–75.
16. Simonot DL, Farrell AP (2007) Cardiac remodelling in rainbow trout *Oncorhynchus mykiss* Walbaum in response to phenylhydrazine-induced anaemia. *J Exp Biol* 210: 2574–2584.
17. Simonot DL, Farrell AP (2009) Coronary vascular volume remodelling in rainbow trout *Oncorhynchus mykiss*. *J Fish Biol* 75: 1762–1772.
18. Sun X, Hoage T, Bai P, Ding Y, Chen Z, et al. (2009) Cardiac hypertrophy involves both myocyte hypertrophy and hyperplasia in anemic zebrafish. *PLoS ONE* 4: e6596. doi:10.1371/journal.pone.0006596.
19. Bailey JR, West JL, Driedzic WR (1997) Heart growth associated with sexual maturity in male rainbow trout (*Oncorhynchus mykiss*) is hyperplastic. *Comp Biochem Phys B* 118: 607–611.
20. Clark RJ, Rodnick KJ (1998) Morphometric and biochemical characteristics of ventricular hypertrophy in male rainbow trout (*Oncorhynchus mykiss*). *J Exp Biol* 201: 1541–1552.
21. McClelland GB, Dalziel AC, Fragoso NM, Moyes CD (2005) Muscle remodeling in relation to blood supply: implications for seasonal changes in mitochondrial enzymes. *J Exp Biol* 208: 515–522.
22. van der Meulen T, Schipper H, van den Boogaart JGM, Huisling MO, Kranenbarg S, et al. (2006) Endurance exercise differentially stimulates heart and axial muscle development in zebrafish (*Danio rerio*). *Am J Physiol-Reg I* 291: R1040–R1048.
23. Soonpaa MH, Kim KK, Pajak L, Franklin M, Field LJ (1996) Cardiomyocyte DNA synthesis and binucleation during murine development. *Am J Physiol-Heart C* 271: H2183–H2189.
24. Akazawa H, Komuro I (2003) Roles of cardiac transcription factors in cardiac hypertrophy. *Circ Res* 92: 1079–1088.

25. Saborido A, Molano F, Moro G, Megias A (1995) Regulation of dihydropyridine receptor levels in skeletal and cardiac-muscle by exercise training. *PLug Arch Eur J Phy* 429: 364–369.
26. Moran M, Saborido A, Megias A (2003) Ca<sup>2+</sup> regulatory systems in rat myocardium are altered by 24 weeks treadmill training. *PLug Arch Eur J Phy* 446: 161–168.
27. Rolim NPL, Medeiros A, Rosa KT, Mattos KC, Irigoyen MC, et al. (2007) Exercise training improves the net balance of cardiac Ca<sup>2+</sup> handling protein expression in heart failure. *Physiol Genomics* 29: 246–252.
28. Anttila K, Manttari S, Jarvilehto M (2006) Effects of different training protocols on Ca<sup>2+</sup> handling and oxidative capacity in skeletal muscle of Atlantic salmon (*Salmo salar* L.). *J Exp Biol* 209: 2971–2978.
29. Anttila K, Jarvilehto M, Manttari S (2008) The swimming performance of brown trout and whitefish: the effects of exercise on Ca<sup>2+</sup> handling and oxidative capacity of swimming muscles. *J Comp Physiol B* 178: 465–475.
30. Anttila K, Jokikokko E, Erkinaro J, Jarvilehto M, Manttari S (2011) Effects of training on functional variables of muscles in reared Atlantic salmon *Salmo salar* smolts: connection to downstream migration pattern. *J Fish Biol* 78: 552–566.
31. Sanger AM (1992) Quantitative fine-structural diversification of red and white muscle-fibers in cyprinids. *Environ Biol Fish* 33: 97–104.
32. Pelster B, Sanger AM, Siegle M, Schwerte T (2003) Influence of swim training on cardiac activity, tissue capillarization, and mitochondrial density in muscle tissue of zebrafish larvae. *Am J Physiol-Reg I* 285: R339–R347.
33. Yancopoulos GD, Davis S, Gale NW, Rudge JS, Wiegand SJ, et al. (2000) Vascular-specific growth factors and blood vessel formation. *Nature* 407: 242–248.
34. Chou CF, Tohari S, Brenner S, Venkatesh B (2004) Erythropoietin gene from a teleost fish, *Fugu rubripes*. *Blood* 104: 1498–1503.
35. Moyes CD, Mathieucostello OA, Brill RW, Hochachka PW (1992) Mitochondrial metabolism of cardiac and skeletal-muscles from a fast (*Katsuwonus pelamis*) and a slow (*Cyprinus carpio*) fish. *Can J Zool* 70: 1246–1253.
36. West TG, Arthur PG, Suarez RK, Doll CJ, Hochachka PW (1993) *In vivo* utilization of glucose by heart and locomotory muscles of exercising rainbow trout (*Oncorhynchus mykiss*). *J Exp Biol* 177: 63–79.
37. Moyes CD (1996) Cardiac metabolism in high performance fish. *Comp Biochem Phys A* 113: 69–75.
38. Lehman JJ, Kelly DP (2002) Transcriptional activation of energy metabolic switches in the developing and hypertrophied heart. *Clin Exp Pharmacol P* 29: 339–345.
39. Pedersen BK, Febbraio MA (2008) Muscle as an endocrine organ: Focus on muscle-derived interleukin-6. *Physiol Rev* 88: 1379–1406.
40. Castro V, Grisdale-Helland B, Helland SJ, Kristensen T, Jorgensen SM, et al. (2011) Aerobic training stimulates growth and promotes disease resistance in Atlantic salmon (*Salmo salar*). *Comp Biochem Phys A* 160: 278–290.
41. Pedersen BK, Akerstrom TCA (2007) Role of myokines in exercise and metabolism. *J Appl Physiol* 103: 1093–1098.
42. Kemi OJ, Haram PM, Loennechen JP, Osnes JB, Skomedal T, et al. (2005) Moderate vs. high exercise intensity: Differential effects on aerobic fitness, cardiomyocyte contractility, and endothelial function. *Cardiovasc Res* 67: 161–172.
43. Tjonna AE, Lee SJ, Rognmo O, Stolen TO, Bye A, et al. (2008) Aerobic interval training versus continuous moderate exercise as a treatment for the metabolic syndrome - A pilot study. *Circulation* 118: 346–354.
44. Jobling M, Baardvik BM, Christiansen JS, Jorgensen EH (1993) The effects of prolonged exercise training on growth performance and production parameters in fish. *Aquacult Int* 1: 95–111.
45. Greer Walker M, Emerson L (1978) Sustained swimming speeds and myotomal muscle function in trout, *Salmo gairdneri*. *J Fish Biol* 13: 475–481.
46. Houlihan DF, Laurent P (1987) Effects of exercise training on the performance, growth, and protein-turnover of rainbow trout (*Salmo gairdneri*). *Can J Fish Aquat Sci* 44: 1614–1621.
47. Ritchie RH, Delbridge LMD (2006) Cardiac hypertrophy, substrate utilization and metabolic remodelling: Cause or effect? *Clin Exp Pharmacol P* 33: 159–166.
48. Schredelseker J, Shrivastav M, Dayal A, Grabner M (2010) Non-Ca<sup>2+</sup>-conducting Ca<sup>2+</sup> channels in fish skeletal muscle excitation-contraction coupling. *P Natl Acad Sci USA* 107: 5658–5663.
49. Vornanen M, Shiels HA, Farrell AP (2002) Plasticity of excitation-contraction coupling in fish cardiac myocytes. *Comp Biochem Physiol A* 132: 827–846.
50. Shiels HA, Vornanen M, Farrell AP (2002) The force-frequency relationship in fish hearts - a review. *Comp Biochem Physiol A* 132: 811–826.
51. Shiels HA, Vornanen M, Farrell AP (2002) Temperature dependence of cardiac sarcoplasmic reticulum function in rainbow trout myocytes. *J Exp Biol* 205: 3631–3639.
52. Tomanek RJ (1970) Effects of age and exercise on extent of myocardial capillary bed. *Anat Rec* 167: 55–62.
53. Bloor CM, Leon AS (1970) Interaction of age and exercise on heart and its blood supply. *Lab Invest* 22: 160–165.
54. Iemitsu M, Maeda S, Jesmin S, Otsuki T, Miyauchi T (2006) Exercise training improves aging-induced downregulation of VEGF angiogenic signaling cascade in hearts. *Am J Physiol-Heart C* 291: H1290–H1298.
55. Hojman P, Brodin C, Gissel H, Brandt C, Zerahn B, et al. (2009) Erythropoietin over-expression protects against diet-induced obesity in mice through increased fat oxidation in muscles. *PLoS ONE* 4: e5894. doi:10.1371/journal.pone.0005894.
56. Rundqvist H, Rullman E, Sundberg CJ, Fischer H, Eisleitner K, et al. (2009) Activation of the erythropoietin receptor in human skeletal muscle. *Eur J Endocrinol* 161: 427–434.
57. Anagnostou A, Liu ZY, Steiner M, Chin K, Lee ES, et al. (1994) Erythropoietin receptor messenger-*ra* expression in human endothelial-cells. *P Natl Acad Sci USA* 91: 3974–3978.
58. Brines M, Cerami A (2005) Emerging biological roles for erythropoietin in the nervous system. *Nature Rev Neurosci* 6: 484–494.
59. Chinetti G, Fruchart JC, Staels B (2000) Peroxisome proliferator-activated receptors (PPARs): Nuclear receptors at the crossroads between lipid metabolism and inflammation. *Inflamm Res* 49: 497–505.
60. Handschin C, Spiegelman BM (2008) The role of exercise and PGC1 alpha in inflammation and chronic disease. *Nature* 454: 463–469.
61. Jager S, Handschin C, Pierre J, Spiegelman BM (2007) AMP-activated protein kinase (AMPK) action in skeletal muscle via direct phosphorylation of PGC-1 alpha. *P Natl Acad Sci USA* 104: 12017–12022.
62. Patey CP, Driedzic WR (1997) Cold acclimation increases activities of mitochondrial long-chain acyl-CoA synthetase and carnitine acyl-CoA transferase I in heart of rainbow trout (*Oncorhynchus mykiss*). *Can J Zool* 75: 324–331.
63. Pedersen BK (2009) The diseaseome of physical inactivity - and the role of myokines in muscle-fat cross talk. *J Physiol-London* 587: 5559–5568.
64. Funk CD (2001) Prostaglandins and leukotrienes: Advances in eicosanoid biology. *Science* 294: 1871–1875.
65. Tak PP, Firestein GS (2001) NF-kappa B: a key role in inflammatory diseases. *J Clin Invest* 107: 7–11.
66. Sachdev S, Davies KJA (2008) Production, detection, and adaptive responses to free radicals in exercise. *Free Radical Biol Med* 44: 215–223.
67. Allen RG, Tresini M (2000) Oxidative stress and gene regulation. *Free Radical Bio Med* 28: 463–499.
68. Arend WP, Malayak M, Guthridge CJ, Gabay C (1998) Interleukin-1 receptor antagonist: Role in biology. *Annu Rev Immunol* 16: 27–55.
69. Kapadia S, Lee J, Torreamione G, Birdsall HH, Ma TS, et al. (1995) Tumor-necrosis-factor-alpha gene and protein expression in adult feline myocardium after endotoxin administration. *J Clin Invest* 96: 1042–1052.
70. Yamauchitakahara K, Ihara Y, Ogata A, Yoshizaki K, Azuma J, et al. (1995) Hypoxic stress induces cardiac myocyte-derived interleukin-6. *Circulation* 91: 1520–1524.
71. Doyama K, Fujiwara H, Fukumoto M, Tanaka M, Fujiwara Y, et al. (1996) Tumor necrosis factor is expressed in cardiac tissues of patients with heart failure. *Int J Cardiol* 54: 217–225.
72. Gwechenberger M, Mendoza LH, Youker KA, Frangogiannis NG, Smith CW, et al. (1999) Cardiac myocytes produce interleukin-6 in culture and in viable border zone of reperfused infarctions. *Circulation* 99: 546–551.
73. Craig R, Larkin A, Mingo AM, Thuerlauf DJ, Andrews C, et al. (2000) p38 MAPK and NF-kappa B collaborate to induce interleukin-6 gene expression and release - Evidence for a cytoprotective autocrine signaling pathway in a cardiac myocyte model system. *J Biol Chem* 275: 23814–23824.
74. Pfaffl MW, Horgan GW, Dempfle L (2002) Relative expression software tool (REST©) for group-wise comparison and statistical analysis of relative expression results in real-time PCR. *Nucleic Acids Res* 30: e36. doi:10.1093/nar/30.9.e36.
75. Rice P, Longden I, Bleasby A (2000) EMBOS: The European molecular biology open software suite. *Trends Genet* 16: 276–277.
76. Bethke J, Rojas V, Berendsen J, Cardenas C, Guzman F, et al. (2012) Development of a new antibody for detecting natural killer enhancing factor (NKEF)-like in infected salmonids. *J Fish Dis*. In press.