



HAL
open science

Description of the biogeochemical features of the subtropical southeastern Atlantic and the Southern Ocean south of South Africa during the austral summer of the International Polar Year

F.A Le Moigne, Marie Boye, A. Masson, Rudolph Corvaisier, E. Grossteffan, A. Gueneugues, Philippe Pondaven

► To cite this version:

F.A Le Moigne, Marie Boye, A. Masson, Rudolph Corvaisier, E. Grossteffan, et al.. Description of the biogeochemical features of the subtropical southeastern Atlantic and the Southern Ocean south of South Africa during the austral summer of the International Polar Year. *Biogeosciences*, 2013, 10, pp.281-295. 10.5194/bg-10-281-2013 . hal-00789087

HAL Id: hal-00789087

<https://hal.univ-brest.fr/hal-00789087>

Submitted on 15 Feb 2013

HAL is a multi-disciplinary open access archive for the deposit and dissemination of scientific research documents, whether they are published or not. The documents may come from teaching and research institutions in France or abroad, or from public or private research centers.

L'archive ouverte pluridisciplinaire **HAL**, est destinée au dépôt et à la diffusion de documents scientifiques de niveau recherche, publiés ou non, émanant des établissements d'enseignement et de recherche français ou étrangers, des laboratoires publics ou privés.



Description of the biogeochemical features of the subtropical southeastern Atlantic and the Southern Ocean south of South Africa during the austral summer of the International Polar Year

F. A. C. Le Moigne^{1,3}, M. Boye¹, A. Masson¹, R. Corvaisier¹, E. Grossteffan², A. Guéneugues¹, and P. Pondaven¹

¹Institut Universitaire Européen de la Mer (IUEM) UMS3113, Laboratoire des Sciences de l'Environnement Marin UMR6539, Technopôle Brest Iroise, 29280 Plouzané, France

²Unité Mixte de Services (UMS3113), Institut Universitaire Européen de la Mer, Technopole Brest-Iroise, 29280 Plouzane, France

³present address: Ocean Biogeochemistry and Ecosystem, National Oceanography Centre, European Way, Southampton SO14 3ZH, UK

Correspondence to: F. A. C. Le Moigne (f.lemoigne@noc.soton.ac.uk)

Received: 19 January 2012 – Published in Biogeosciences Discuss.: 25 April 2012

Revised: 13 October 2012 – Accepted: 4 December 2012 – Published: 18 January 2013

Abstract. Meridional and vertical distributions of several biogeochemical parameters were studied along a section in the southeastern Atlantic and the Southern Ocean south of South Africa during the austral summer 2008 of the International Polar Year to characterize the biogeochemical provinces and to assess the seasonal net diatom production. Based on analyses of macro-nutrients, ammonium (NH_4), chlorophyll *a*, (Chl *a*), phaeopigments, biogenic silica (BSi), particulate inorganic carbon (PIC), and particulate organic carbon and nitrogen (POC and PON, respectively), four biogeochemical domains were distinguished along the section: the subtropical Atlantic, the confluence zone of the subtropical and subantarctic domains, the Polar Frontal Zone (PFZ) in the Antarctic Circumpolar Current (ACC), and the north-eastern branch of the Weddell Gyre. The subtropical region displayed extremely low nutrient concentrations featuring oligotrophic conditions, and sub-surface maxima of Chl *a* and phaeopigments never exceeded $0.5 \mu\text{g L}^{-1}$ and $0.25 \mu\text{g L}^{-1}$, respectively. The anticyclonic and cyclonic eddies crossed in the Cape Basin were characterized by a deepening and a rise, respectively, of the nutrients isoclines. The confluence zone of the subtropical domain and the northern side of the ACC within the subantarctic domain displayed remnant nitrate and phosphate levels, whereas silicate concentrations kept to extremely low levels. In this area, Chl *a* level of $0.4\text{--}0.5 \mu\text{g L}^{-1}$ distributed homogeneously within the

mixed layer, and POC and PON accumulated to values up to $10 \mu\text{M}$ and $1.5 \mu\text{M}$, respectively, indicative of biomass accumulation along the confluence zone during the late productive period. In the ACC domain, the Polar Frontal Zone was marked by a post-bloom of diatoms that extended beyond the Polar Front (PF) during this late summer condition, as primarily evidenced by the massive depletion of silicic acid in the surface waters. The accumulation of NH_4 to values up to $1.25 \mu\text{M}$ at 100 m depth centred on the PF and the accumulation of BSi up to $0.5 \mu\text{M}$ in the surface waters of the central part of the PFZ also featured a late stage of the seasonal diatom bloom. The silica daily net production rate based on the seasonal depletion of silicic acid was estimated to be $11.9 \pm 6.5 \text{ mmol m}^{-2} \text{ d}^{-1}$ in the domain of the vast diatom post-bloom, agreeing well with the previously recorded values in this province. The Weddell Gyre occasionally displayed relative surface depletion of silicic acid, suggesting a late stage of a relatively minor diatom bloom possibly driven by iceberg drifting releases of iron. In this domain the estimated range of silica daily net production rate (e.g. $21.1 \pm 8.8 \text{ mmol m}^{-2} \text{ d}^{-1}$) is consistent with previous studies, but was not significantly higher than that in the Polar Front region.

1 Introduction

The Southern Ocean is deemed to play an important role in the global carbon cycle due to unique features involving both physical circulation and biological processes. In particular, the outcropping of deep water masses allows for the exchange of gases such as carbon dioxide (CO₂) between the deep sea and the atmosphere, while the incomplete utilisation of nutrients by the marine phytoplankton in this high-nutrient, low-chlorophyll (HNLC) area of the world ocean allows the concentration of CO₂ in the atmosphere to be substantially greater than would be the case if nitrate was used efficiently. Furthermore, the polar–extrapolar communication of heat, freshwater and CO₂ helps to close the hydrological cycle through the production of Antarctic Intermediate Water (AAIW) and Subantarctic Mode Water (SAMW). These water masses transport nutrients northward within the thermocline; by vertical mixing and advection, nutrients can sustain a large part of the primary and export productions at the low latitudes (Sarmiento et al., 2004). The formation of AAIW, SAMW and Antarctic Bottom Water (AABW) can also provide a mechanism for uptake and transport of anthropogenic CO₂ (Caldeira and Duffy, 2000). Models indicate that the response of the Southern Ocean to the global warming will be a critical factor determining the future uptake of anthropogenic CO₂ by the ocean (Sarmiento and Toggweiler, 1984). However, the Southern Ocean is not a single vast biogeochemical system. For instance, biogeochemical features separate the Antarctic domain where the air–sea balance of CO₂ can be mainly controlled by the biological pump and circulation in the Antarctic deep-waters formation region, from the Subantarctic province where the global export production can be driven by the biological pump and the circulation in the region of the formation of AAIW and SAMW (Marinov et al., 2006). This dividing of the Southern Ocean has evolved into several complex sub-systems, some of which are highly productive whilst others remain biologically poor all year long (Tréguer and Jacques, 1992).

At first glance the development and accumulation of phytoplankton biomass in the Southern Ocean are mainly controlled by the light intensity (Nelson and Smith, 1991), the availability of trace elements, especially iron (Martin, 1990), and grazing pressure (Buma et al., 1991; Frost, 1996). However, in the beginning of the productive period, biomass maxima concentrate along the Polar Front (Quéguiner et al., 1997), and at the confluence zone of the Subantarctic Front (SAF) and the Subtropical Front (STF) (Banse, 1991), benefiting from favourable and seasonal growth conditions in those regions. The bloom of large, heavily-silicified diatoms developing in late spring in the Polar Front region (Bathmann et al., 1997) leads to a massive depletion in silicate (Quéguiner et al., 1997), and to biogenic silica burial, especially just south of the Polar Front (DeMaster, 1981). The export production in the spring bloom and the burial of biogenic silica in the Antarctic deep sea occur with very little co-

existing organic matter (DeMaster et al., 1991; Ragueneau et al., 2002). Annual production should be limited to that which can be supported by the annual supply of inorganic nutrients and trace elements to the euphotic zone.

The subtropical south-eastern Atlantic gyre is deemed to be an intense inter-ocean exchange area (Lutjeharms et al., 2003). Most of the leakage between the Indian Ocean and the South Atlantic indeed takes place within the retroflexion of the Agulhas current where large eddies are translated to the Atlantic Ocean (Lutjeharms and Vanballegooyen, 1988; Gladyshev et al., 2008). For instance, north of the Subtropical front, nutrients levels such as silicate, nitrate and phosphate may be extremely low, typical of an oligotrophic region (Longhurst, 1991). Furthermore, the accumulation of nutrients and chlorophyll *a* (chl *a*) generally follow the general patterns set by currents and meandering in this region (Lutjeharms and Vanballegooyen, 1988).

In this work we describe the biogeochemical features of the south-eastern Atlantic Ocean and the Southern Ocean south of South Africa based on the distributions of silicate, nitrate, phosphate, ammonium, chl *a*, phaeopigments, particulate organic carbon (POC), particulate organic nitrogen (PON), particulate inorganic carbon (PIC) and biogenic silica (BSi) along a section from the subtropical domain to the Weddell Sea Gyre along the Greenwich Meridian during the late austral summer of the 2008 International Polar Year.

2 Sampling and analytical procedures

2.1 Sampling

Samples were collected during the multidisciplinary MD166 BONUS-GoodHope cruise that took place during the International Polar Year in the austral summer 2008 (13 February 2008–24 March 2008) on board the French R/V *Marion-Dufresne II* sailing from Cape Town, South Africa, to 57° S along the Greenwich Meridian in the Southern Ocean (Fig. 1). The distribution of silicate, nitrate, phosphate (Fig. 2), ammonium (Fig. 3), chlorophyll *a* (Chl *a*) and phaeopigments (Fig. 4) was studied at 78 stations along the section from surface to 5000 m depth and in the upper 300 m for ammonium, Chl *a* and phaeopigments. Particulate stocks of organic carbon (POC) and nitrogen (PON), and inorganic carbon (PIC) were sampled at 68 stations in the upper 300 m along the transect, whereas those of biogenic silica (BSi) were sampled at 12 stations (Fig. 5). The distance between consecutive stations varied between 20 and 40 nautical miles. The samples were collected using a CTD-rosette (SBE 32 Seabird) equipped with Niskin bottles. Potential temperature (θ), salinity (*S*) and dissolved oxygen (O₂) were recorded using SBE 911+ Seabird probe with SBE3+, SBE4 and SBE43 sensors, respectively (Branellec et al., 2010).

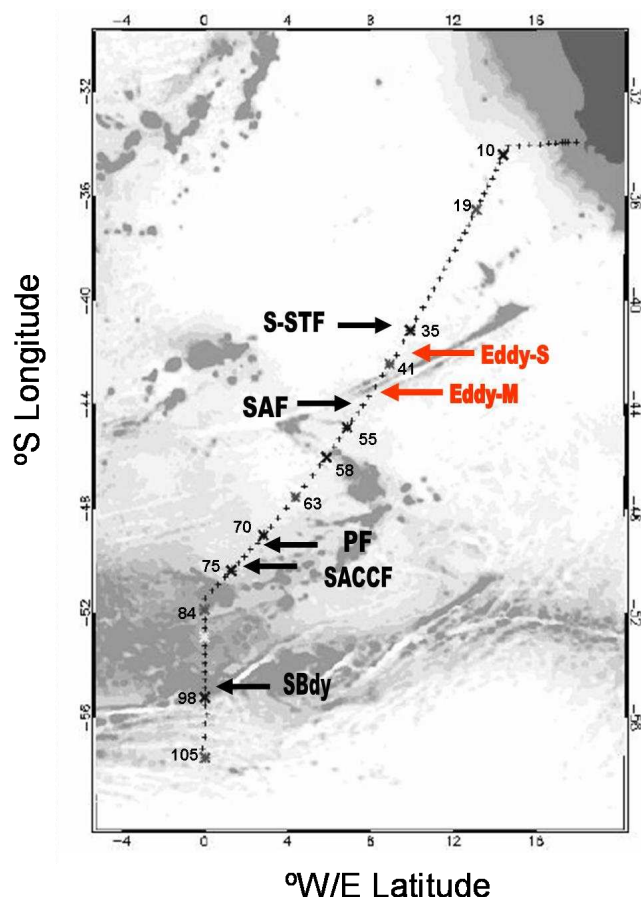


Fig. 1. Location of the stations sampled during the MD166 BONUS-GoodHope cruise. Smaller crosses are for the HYDRO stations, grey crosses the LARGE stations and black crosses the SUPER stations. The positions of fronts are also shown, with the southern branch of the Subtropical Front (S-STF; $\sim 42^{\circ}2'S$), the Sub-Antarctic Front (SAF; $44^{\circ}2'S$), the Polar Front (PF; $50^{\circ}22.4'S$), the Southern ACC Front (SACCF; $\sim 51^{\circ}52'S$) and the Southern Boundary of the ACC (SBdy; $\sim 55^{\circ}54.3'S$).

2.2 Analytical procedures

2.2.1 Nutrients and ammonium

Silicate, nitrate, phosphate and ammonium concentrations were measured on board the ship. Silicate and nitrate were analysed by standard method with a Bran+Luebbe AAIII auto-analyser as described by Tréguer and Le Corre (1979). Samples were run versus daily prepared standards diluted from stock standard solutions in artificial seawater. Phosphate was determined manually using a spectrophotometer (Shimadzu UV 1700) as described by Murphy and Riley (1962). Ammonium was analysed manually by spectrophotometry method (Shimadzu UV 1700) as described by Koroleff (1969). The detection limit for silicate, ni-

trate, phosphate and ammonium analyses were, respectively, $0.1 \mu\text{M}$, $0.04 \mu\text{M}$, $0.05 \mu\text{M}$ and $0.05 \mu\text{M}$.

2.2.2 Chl *a* and phaeopigments

Chl *a* and phaeopigments were determined after filtration of 1–2 L of seawater on GF/F filters using a vacuum pump. The filters were placed in 90 % (v/v) acetone/water and homogenized in a cell for a minimum of 4 h followed by a centrifugation. Chl *a* level was then measured by fluorescence detection using a TURNER Design 10-AN Fluorimeter. Phaeopigment concentration was determined in these samples after the addition of $100 \mu\text{M HCl}$ (1N) (Strickland and Parsons, 1972). Filters were measured within a few days after their collection on board. Detection limit of the measurement of Chl *a* and phaeopigment were, respectively, $0.005 \mu\text{g L}^{-1}$ and $0.075 \mu\text{g L}^{-1}$. Chl *a* analyses were calibrated versus a pure Chl *a* from spinach (Sigma).

2.2.3 Particulate matter

Total particulate carbon (TPC), particulate organic carbon (POC) and particulate organic nitrogen (PON) were analysed from a bulk of 2 L seawater filtered on 4 precombusted glass fiber filters (Whatman GF/F), as two filters were used for duplicate TPC determination and the other two for POC and PON duplicate analyses. The filters were kept frozen (-20°C) before their analyses in the shore-based laboratory. POC and PON were analysed after fuming of the filter with concentrated HCl for 4 h in a dessicator and drying at 60°C in an oven (Lorrain et al., 2003). POC and PON were measured using Carlo Erba Analyzer 1500. TPC was analysed using the same protocol and method, but without fuming the filters. The particulate inorganic carbon (PIC) concentrations were estimated from the difference between TPC and POC.

Biogenic silica (BSi) was determined from 1 L seawater samples filtered onto polycarbonate filters ($0.6 \mu\text{m}$ pore-size, diameter 47 mm) and the filters were dried at 60°C and stored for further analysis. Before analyses the filters were dried at 60°C for 24 h and then kept at room temperature. BSi was analysed after the digestion of the filter with 0.2 M NaOH for 45 min at 100°C (Ragueneau et al., 2005).

2.3 Daily production rate

In the Southern Ocean, unaltered remnant winter water is observed at the depth of the temperature minimum during summer. Salinity in the remnant winter waters layer is within 0.02 to 0.2 % of that observed at the sea surface during winter in the Indian sector of the Southern Ocean (Pondaven et al., 2000), and the silicate and nitrate concentrations in remnant winter waters are within 0.7 to 7 % of that at the sea surface (Jacques, 1991; Pondaven et al., 2000). Hence, integrated depletions of nitrate and silicate were calculated between the surface and the depth of the remnant winter waters

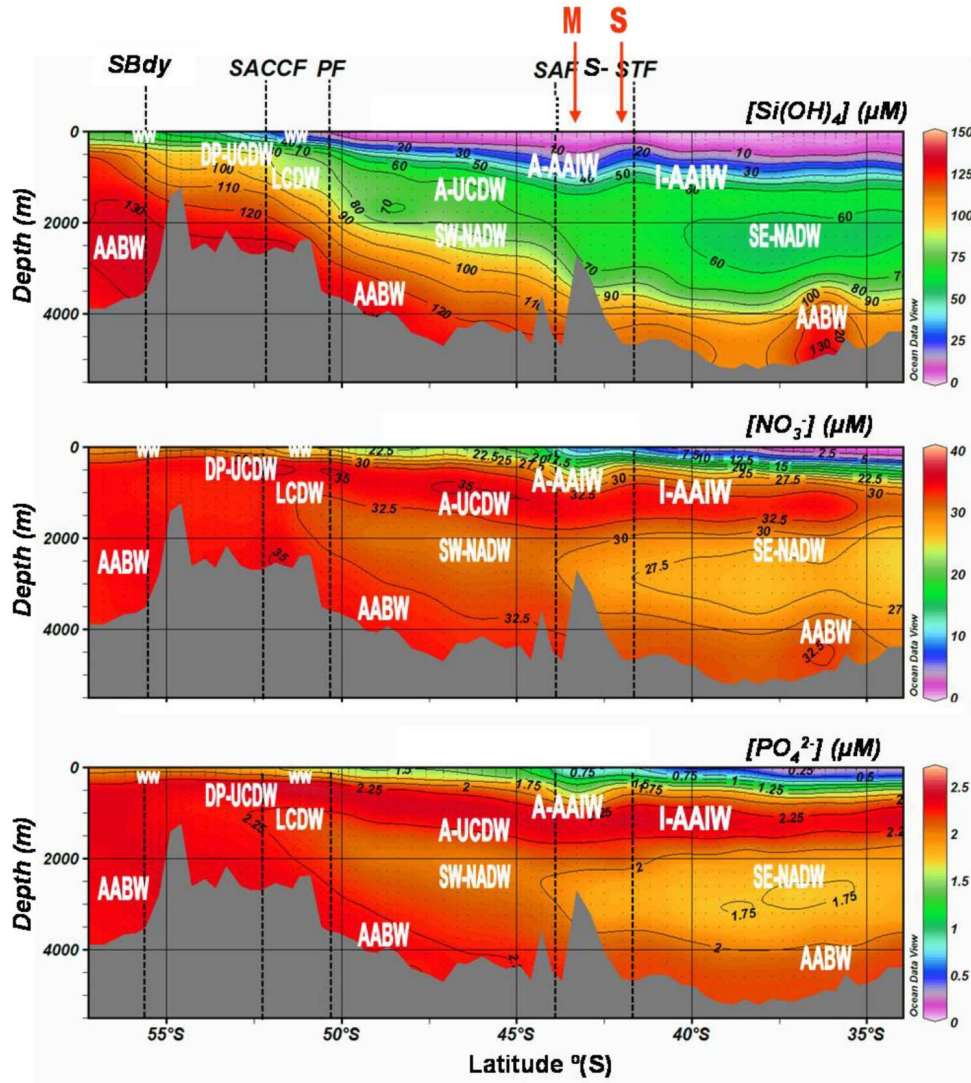


Fig. 2. Contour plots of silicate ($\text{Si}(\text{OH})_4^-$; μM), nitrate (NO_3^- ; μM), and phosphate (PO_4^{2-} ; μM) concentrations versus depth (m) and latitude along the MD166 BONUS-GoodHope section. The colour mapping extrapolation is based on the sampling resolution along the section of ~ 2600 km that was achieved with 79 stations separated by ~ 15 to 56 km, with a total of 22 sampling depths per station. Figure prepared using Ocean Data View (Schlitzer, 2012).

according to Eq. (1) using the vertical profiles:

$$\Delta\text{Nuts} = \sum_{Z_s}^{Z_{\text{minT}}} \left[(\text{Nut}_{\text{@minT}} - \frac{\text{Nut}_{Z_s} + \text{Nut}_{Z_{s+1}}}{2}) \times (Z_{s+1} - Z_s) \right] \quad (1)$$

where ΔNuts is the integrated nutrient depletion (referred to as ΔSi for silicate and ΔNO_3^- for nitrate), $\text{Nut}_{\text{@minT}}$ is the nutrient concentration at the depth of the winter waters, Nut_{Z_s} at the depth Z_s and $\text{Nut}_{Z_{s+1}}$ at the depth Z_{s+1} (Z_s and Z_{s+1} are inferior or equal to the depth of the winter waters).

Estimates of biogenic silica daily production rates (P Si) are derived from integrated silicate depletion (ΔSi) by assuming the nutrient depletion by phytoplankton occurs over a period of 90 days in this area, that is, from early November to early February (Jacques, 1991; Pondaven et al., 2000).

Then the daily production of biogenic silica (P Si) is theoretically calculated according to Eq. (2):

$$\text{P Si} = (\Delta\text{Si} + D_{\text{Si}} + A_{\text{Si}} + R_{\text{Si}})/90 \quad (2)$$

considering inputs of silicate into the surface layer by vertical diffusion (D_{Si}) and lateral advection (A_{Si}), and the regeneration of silicate through dissolution of biogenic silica within the surface mixed layer (R_{Si}). However, none of those later terms were estimated during the cruise, whereas they can represent 18 to 26 % of ΔSi (Pondaven et al., 2000). Our estimates are thus underestimations of the biogenic silica daily production rates.

Estimates of daily production rates of particulate organic nitrogen (PN) are derived from vertically integrated nitrate

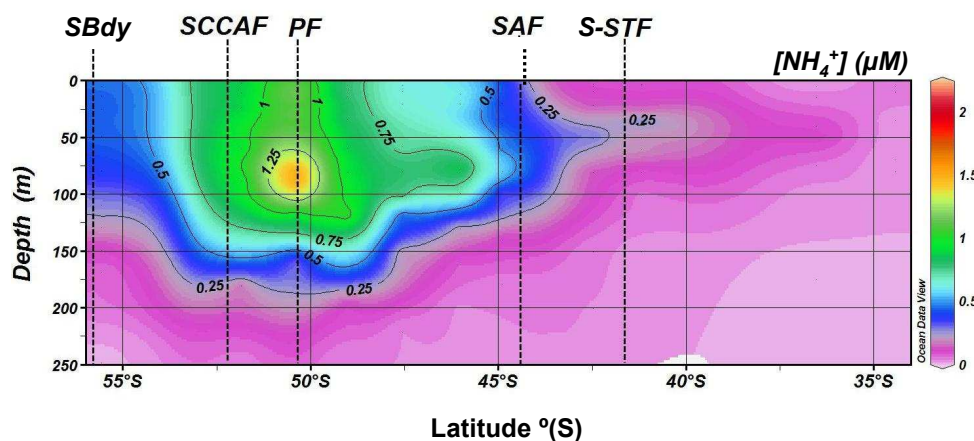


Fig. 3. Contour plot of ammonium concentrations (NH_4^+ ; μM) in the upper 250 m along the MD166 BONUS-GoodHope section. Figure prepared using Ocean Data View (Schlitzer, 2012).

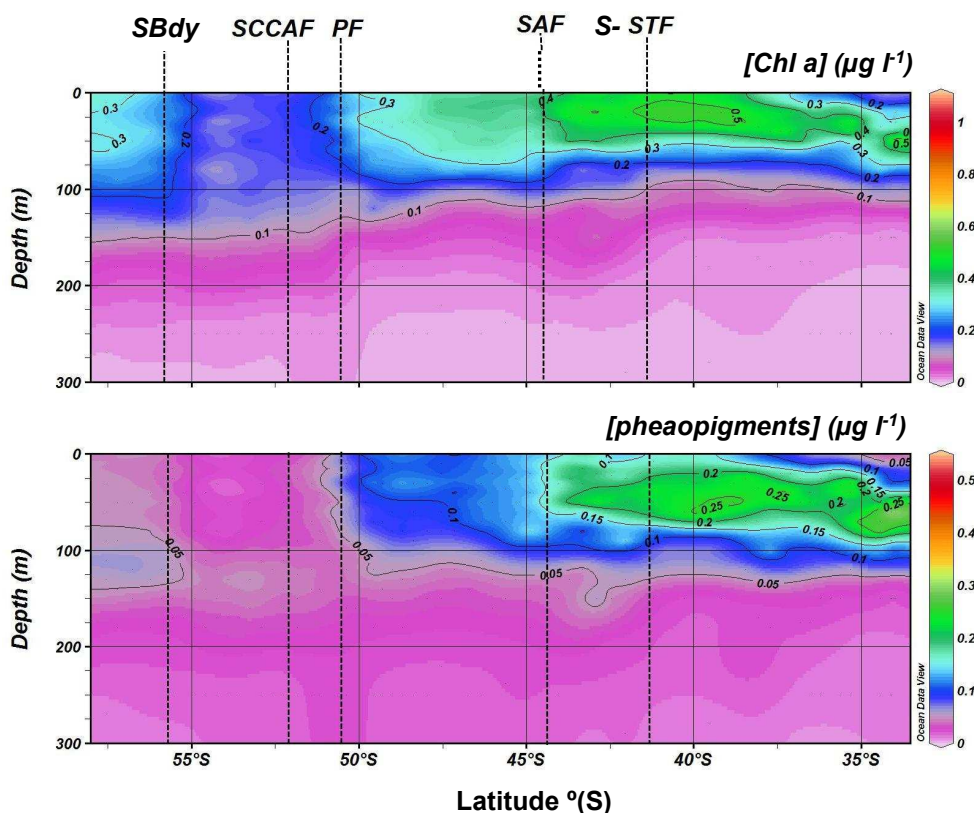


Fig. 4. Contour plots of Chlorophyll *a* ($\text{Chl } a$; $\mu\text{g L}^{-1}$) and phaeopigments (phaeopigments; $\mu\text{g L}^{-1}$) concentrations in the upper 300 m along the MD166 BONUS-GoodHope section. Figure prepared using Ocean Data View (Schlitzer, 2012).

depletion during the 90 days of the productive season, and are calculated theoretically according to Eq. (3):

$$PN = ((\Delta\text{NO}_3^- + D_{\text{NO}_3} + A_{\text{NO}_3} + R_{\text{NO}_3})/f\text{-ratio})/90 \quad (3)$$

considering the inputs of nitrate into the surface layer by vertical diffusion (D_{NO_3}), lateral advection (A_{NO_3}), and nitrite

oxidation rate (R_{NO_3}). Those later terms were not estimated during the cruise and not considered in our estimates, but they can represent 40 % of ΔNO_3^- (Pondaven et al., 2000). The fraction of total nitrogen production sustained by ammonium or urea was deduced from shipboard determination

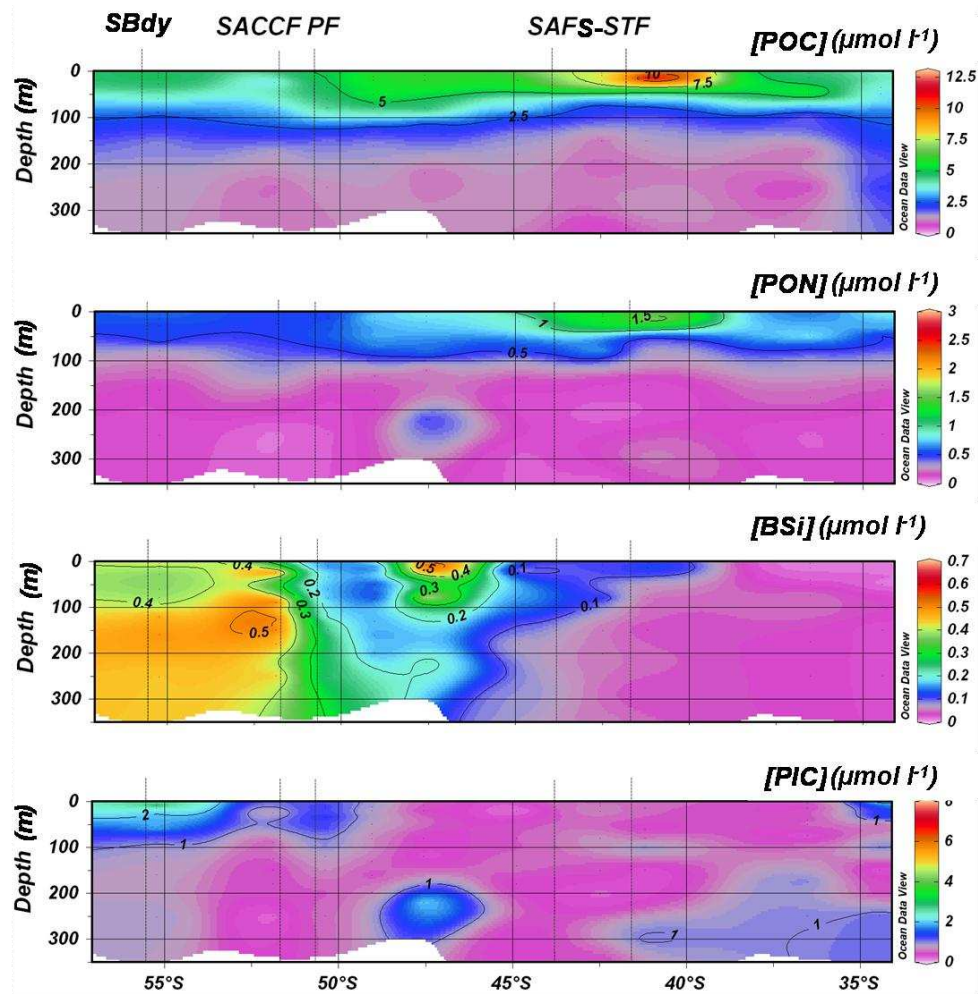


Fig. 5. Contour plots of particulate organic carbon (POC; $\mu\text{mol L}^{-1}$), particulate organic nitrogen (PON; $\mu\text{mol L}^{-1}$), biogenic silica (BSi; $\mu\text{mol L}^{-1}$) and particulate inorganic carbon (PIC; $\mu\text{mol L}^{-1}$) concentrations in the upper 350 m along the MD166 BONUS-GoodHope section. Figure prepared using Ocean Data View (Schlitzer, 2012).

of f-ratio (Joubert et al., 2011), where mean f-ratio characterizing each domain was used in our calculation.

3 Results

3.1 Hydrography

The section crossed the north of the subtropical domain that extended southward to the southern branch of the Subtropical Front (S-STF) (Gordon et al., 1992) at $\sim 42^{\circ}2'$ S. Southward it crossed the Antarctic Circumpolar Current (ACC) bounded in the north by the S-STF and in the south by the Southern Boundary of the ACC (SBdy; Orsi et al., 1995) at $\sim 55^{\circ}54.3'$ S, and then the region of the Weddell Sea Gyre at the southern end of the section (Fig. 1). Within the ACC, the subantarctic domain is bounded in the south by the Sub-Antarctic Front (SAF; Orsi et al., 1995; Belkin and Gor-

don, 1996), which was located at $44^{\circ}2'$ S; the Polar Frontal Zone (PFZ) is bounded in the south by the Polar Front (PF) at $50^{\circ}22.4'$ S. The Southern ACC Front (SACCF) was located at $\sim 51^{\circ}52'$ S and the Southern Boundary of the ACC (SBdy) at $\sim 55^{\circ}54'$ S. The mixed layer depth deepened southward from around 50 m in the subtropical and subantarctic domains, to 60 m in the Polar Frontal Zone, to 88 m in the southern side of the ACC and down to 90 m in the Weddell Gyre.

The subtropical domain was characterized by a turbulent dynamical regime commonly observed in this region (Gladyshchev et al., 2008). Warm and salty anticyclonic eddies commonly interact with slope waters in the South Atlantic waters (Baker-Yeboah et al., 2010). The anticyclonic eddies are generally referred to as Agulhas rings and are ejected from the western boundary current of the southwest Indian Ocean, the Agulhas Current, at its retroflexion (Lutjeharms and Vanballegooyen, 1988). During the expedition, two large eddies of subtropical origin were intersected in the subantarctic zone

(Arhan et al., 2011). A cyclonic eddy (*S*) was crossed just south of the S-STF (at station 39) and was marked by pronounced low oxygen and CFCs anomalies revealing an origin at the South Africa continental slope (Arhan et al., 2011). In addition a large and intense anticyclonic eddy (*M*) that was an Agulhas ring had crossed the Agulhas Ridge and was observed adjacent to the SAF (at station 46; Arhan et al., 2011). In this domain Antarctic Intermediate Waters originated from the Indian Ocean (I-AAIW; Belkin and Gordon, 1996) were depicted between 800 and 1200 m closer to Africa. Another variety of AAIW was observed to the south featuring the AAIW formed in the subantarctic domain of the southwest Atlantic (A-AAIW; Piola and Gordon, 1989). Deeper, centred at about 2500 m, a diluted variety of North Atlantic Deep Water which had flowed along the southwest African continental shelf (SE-NADW; Arhan et al., 2003) was identified north of S-STF. At the bottom, an old variety of Antarctic Bottom Water (AABW) likely formed in the Weddell Sea (Gladyshev et al., 2008) was observed in the Cape Basin abyssal plain below 3500 m depth, characterized by low salinity and cold temperature.

In the ACC domain, south of the Agulhas Ridge, the surface water (SW) was marked by a southward decrease of temperature from 4 °C to 2 °C. Below lays the Atlantic variety of AAIW (A-AAIW), which subducts along the SAF. The A-AAIW waters were detected between depths of 300 and 600 m. At greater depths the Upper Circumpolar Deep Water originated from the southwest Atlantic (A-UCDW; Whitworth and Nowlin, 1987) was depicted north of the PF at about 1000–1500 m. North of the PF, the deeper waters (1500–3000 m) exhibited properties of diluted South West NADW (SW-NADW), which flows along the continental slope of South America, down to the Argentinean Basin before being injected into the ACC in the southwestern Atlantic (Whitworth and Nowlin, 1987). At the bottom a variety of fresher and colder bottom water than AABW depicted in the Cape Abyssal plain was found below 3250 m on the northern flank of the Mid-Atlantic Ridge. South of the PF, deep waters exhibited properties of UCDW which had passed through the Drake Passage (DP-UCDW; Whitworth and Nowlin, 1987) between 250 and 700 m, and deeper those of Lower Circumpolar Deep Water (LCDW) with lower salinity than SW-NADW. South of the ACC domain, the whole water column was impacted by waters of the Weddell Gyre; those waters are much colder and those near the bottom were a younger variety of AABW than those observed in the Cape Basin, as they are characterized by higher dissolved O₂ concentrations. Winter waters (WW) were detected at depth of the temperature minimum in the ACC domain and the Weddell Gyre between 100 and 250 m, with temperature below 1 °C as described in Bown et al., (2011).

3.2 Nutrients

Nitrate distribution showed a meridional gradient in the surface waters with a southward increase from sub-micromolar levels in the subtropical domain up to 30 μM at the Polar Front and beyond (Fig. 2). Phosphate also followed a southward increase from sub-micromolar values in the subtropical domain to 1.75 μM at the Polar Front, and up to 2 μM south of 52° S (Fig. 2). The concentrations of silicate kept to low values (sub-micromolar range) from the subtropical domain towards the southern side of the Polar Front, beyond which they increased up to 75 μM in the southern side of the ACC (Fig. 2). Surface nitrate and phosphate concentrations started to increase southward in the subantarctic domain, while silicate concentrations started to increase south of the Polar Front (Fig. 2).

Among other specific features of nutrients distribution, a bowl-shaped feature in the silicate, nitrate and phosphate profiles that extended down to about 800 m was observed between the S-STF and the SAF at 44° S south of the Agulhas ridge, corresponding to the core of the anticyclonic eddy-*M* (Fig. 2). Furthermore, silicate isoclines were deepening northward from the PF (Fig. 2).

Relatively low nutrients concentrations were recorded at depth within the core of the SE-NADW observed from 33° S to 44° S between roughly 2000 and 4000 m depth (Fig. 2), with concentrations of 60 μM for silicate, 1.75 μM for phosphate and 27 μM for nitrate. Silicate concentrations ranged from 10 to 20 μM in the A-AAIW, and nitrate and phosphate were in the range of 10 to 30 μM and 1 to 2 μM, respectively. In the WW, nutrients concentrations were similar to those recorded in the A-AAIW. Finally, silicate concentrations were relatively high (130 μM) in the core of the “old variety” of AABW depicted at roughly 36° S below 4000 m depth (Fig. 2).

3.3 Ammonium

Ammonium concentrations were very low in the upper 250 m depth of the subtropical domain, within sub-micromolar range (Fig. 3). Subsurface maximum of about 1.25 μM was observed between 70 and 100 m centred on the Polar Front (Fig. 3). Ammonium concentrations (ranging from 0.25 to 0.75 μM) extended northward of this maximum in the Polar Frontal Zone, and southward in the southern branch of the ACC (Fig. 3).

3.4 Chlorophyll *a* and phaeopigments

The Chl-*a* concentrations never exceeded 0.5 μg L⁻¹ in the surface waters along the section (Fig. 4). Sub-surface relative maxima (< 0.4 μg L⁻¹) were shallower southward along the subtropical region (Fig. 4), and Chl *a* accumulated in the top 50 m with a relative maximum of Chl *a* (~0.5 μg L⁻¹) observed at 25 m along the confluence of the subtropical and

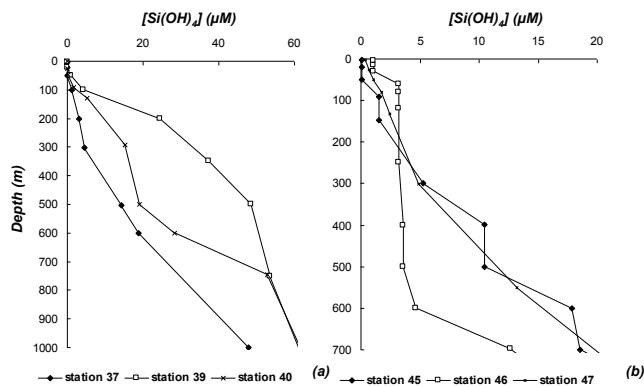


Fig. 6. Vertical distributions of silicate concentrations (Si(OH)_4^- ; μM), **(a)** in the core of the cyclonic eddy-S (station 39) and the surrounding stations (stations 37 and 40); and **(b)** in the core of the anticyclonic eddy-M (station 46) and the surrounding stations (stations 45 and 47).

the subantarctic zones (Fig. 4). In the Polar Frontal Zone, the Chl-*a* concentration was about $0.3 \mu\text{M}$ in the upper 70 m (Fig. 4), corresponding to the mixed layer depth. The southern side of the ACC (between PF and SBby) was marked by extremely low Chl *a* concentrations ($0.1\text{--}0.2 \mu\text{g L}^{-1}$), whereas they were slightly higher ($0.3 \mu\text{g L}^{-1}$) in the Weddell Gyre (Fig. 4). The distribution of the phaeopigments that are degradation products of the Chl *a* also dispatched a subsurface maximum of $0.25 \mu\text{g L}^{-1}$ centred at around 25 m depth at the confluence of the subtropical and subantarctic domains (Fig. 4). The phaeopigment pattern followed similar southward trend as the Chl *a* in these domains, with a subsurface maximum becoming a surface maximum (Fig. 4). In the Polar Frontal Zone, the levels of phaeopigments were extremely low, of about $0.1 \mu\text{g L}^{-1}$ in the upper 70 m (Fig. 4). Phaeopigment concentrations were the lowest in the top 100 m in the southern side of the ACC, while relatively higher levels ($0.06 \mu\text{g L}^{-1}$) were recorded at about 100 m depth in the Weddell Gyre (Fig. 4).

3.5 Particulate matter

3.5.1 Particulate organic carbon and nitrogen

The particulate organic carbon (POC) and the particulate organic nitrogen (PON) ranged from below detection limit to $15 \mu\text{M}$, and below detection limit to $2 \mu\text{M}$, respectively, in the mixed layers along the section (Fig. 5). The highest concentrations of POC and PON were recorded in the upper 50 m at the confluence zone of the subtropical and subantarctic domains. POC and PON concentrations were lower south of the PF, of about $2.5\text{--}5 \mu\text{M}$ and $0.5 \mu\text{M}$ respectively; whereas POC levels were relatively higher at the SBdy and in the PFZ as compared to values recorded at the SACCF (Fig. 5).

3.5.2 Biogenic silica and particulate inorganic carbon

Biogenic silica (BSi) concentrations increased southward in the top 100 m, from below detection limit in the subtropical province to $0.5 \mu\text{M}$ in the Polar Frontal Zone (Fig. 5). Then the distribution was marked by extremely low concentrations in the top 350 m at the PF and its northern side ($< 0.2 \mu\text{M}$), while BSi concentrations were slightly higher and fairly homogenous (at around $0.3 \mu\text{M}$) in the upper 350 m between PF and SACCF (Fig. 5). Accumulation of BSi ($0.55 \mu\text{M}$) occurred south of the SACCF between 150 and 350 m (Fig. 5).

Particulate inorganic carbon (PIC) concentrations generally kept to low values ($< 4 \mu\text{M}$) along the section. The largest accumulation of PIC ($4 \mu\text{M}$) was observed in the top 50 m on the southern side of the ACC and in the Weddell Gyre (Fig. 5). Lower relative accumulations were recorded in deeper waters (200–300 m) in the PFZ ($2 \mu\text{M}$), and in the upper 50 m ($2 \mu\text{M}$) and below 300 m depth ($1 \mu\text{M}$) in the northern part of the subtropical domain off the South African shelf.

4 Discussion

4.1 Biogeochemical features of the subtropical domain and its confluence with the subantarctic zone

Silicate, nitrate and phosphate concentrations were extremely low ($<$ sub-micromolar levels) in the upper 200 m of the subtropical region, and kept to low levels in the subantarctic domain despite a slight increase of nitrate and phosphate concentrations (Fig. 2). Such extremely low nutrients concentrations compared well with those previously observed at the same latitudes slightly earlier in the season (e.g. January) along 45°E (Table 1; Mohan et al., 2004).

In the subtropical domain, the subsurface relative maxima of Chl *a* associated with the extremely low concentrations of nutrients (close to detection limit) were typical of oligotrophic system conditions. It is likely that the ammonium which is kept at low value here was rapidly taken up. Oligotrophic conditions were further supported by ^{15}N incubation experiments which showed that the new production rate was low in this domain, unlike the regenerated production, as exemplified by a *f*-ratio of 0.24 compared to *f*-ratios of 0.41–0.49 south of this domain (Joubert et al., 2011). PIC and BSi concentrations were extremely low in this area, indicating that the biomass resulted from non-mineralizing phytoplankton. Furthermore, the radionuclides derived export production (e.g. $^{234}\text{Th}/^{238}\text{U}$) showed that the transfer rate of carbon to the mesopelagic zone was quite low in this domain (Planchon et al., 2012), consistent with a low new production (Joubert et al., 2011), and probably leading to the relative accumulation of particulate organic N and C observed in the subtropical region (Fig. 5). These observations all support that waters were strongly oligotrophic in the subtropical

gyre south of South Africa, and production was sustained by recycling processes.

At the confluence zone of the subtropical and subantarctic domains, Chl *a* and phaeopigments (degradation pigments) displayed their highest levels (Fig. 4), as well as particulate organic C and N (Fig. 5). The accumulation of particulate material can partly result from a low export rate, as evidenced by $^{234}\text{Th}/^{238}\text{U}$ measurements (Planchon et al., 2012), the biomass being remineralized or grazed within the mixed layer, as further supported by an ammonium peak in this area (Fig. 3). The transition between the two domains was marked by a slight increase in nitrate and phosphate concentrations southward (Fig. 2). The accumulation of particulate organic material (Figs. 4–5) and the low biominerals concentrations (Fig. 5) also occurred where the highest cell abundance was recorded along the section (Beker and Boye, 2010). Taxonomy study using an inverted microscope showed that unidentified nanoflagellates ($< 5\ \mu\text{m}$) and dinoflagellates (*Gymnodinium* spp.) were the most abundant phytoplankton groups in the subtropical domain (Beker and Boye, 2010). Furthermore, cyanobacteria are often too small to be recognized clearly in light-microscope studies, but the cyanobacteria *Synechococcus* sp. and *Prochlorococcus* sp. often dominate the picophytoplankton assemblage in oligotrophic regions (Partensky et al., 1999; Zhang et al., 2008). At the confluence zone of the subtropical and subantarctic domains, the concentrations of dissolved iron (DFe) ranged between 0.098 and 0.179 nM in surface waters (Chever et al., 2010). Cyanobacteria are capable of adapting to such low DFe by activating siderophore-mediated iron transport systems (Wilhelm, 1995). Culture experiments have also shown that the growth of *Synechococcus* sp. is significantly reduced below 10^{-14} – 10^{-13} M of DFe (Timmermans et al., 2005), suggesting that the growth of cyanobacteria was probably not limited at the confluence zone. Additionally, the coastal dinoflagellates *Gymnodinium chlorophorum* have cellular Fe/P quotas of $14.4\ \text{mol mol}^{-1}$ (giving a Fe/C quota of $0.13\ \text{mol mol}^{-1}$; Ho et al., 2003; and using a ratio C/P of 106), and the coastal nanoflagellates have Fe/C quotas of 0.10 to $0.12\ \text{mol mol}^{-1}$ (adapted from Ho et al., 2003). Those cellular Fe/C quotas are much higher than that of the oceanic cyanobacteria *Synechococcus* sp. (e.g. Fe/C = $5.8\ \text{nmol mol}^{-1}$; Timmermans et al., 2005), suggesting higher requirement for DFe than the cyanobacteria. However, oceanic species of dino- and nanoflagellates can have lower DFe requirement than their coastal counterparts.

In the subantarctic zone, silicate distribution appeared as upward pointing tongues of high values (and low values for CFCs; Arhan et al., 2011) in the core of the cyclonic eddy (Figs. 2 and 6a). This also appears in nitrate and phosphate distribution (Fig. 2). However, as the tongue-shaped patterns generally cross the density contours, these eddy anomalies were probably more than just an isopycnal uplift of properties, and reflected trapping and transport of distant water by the eddy (Arhan et al., 2011). The nutrients signatures of

the Agulhas anticyclone ring observed adjacent to the SAF were characterized by pronounced low values at the core station down to $\sim 600\ \text{m}$, relative to values at the surrounding stations (Figs. 2 and 6b) indicative of winter convection. Both eddies were found to transport subtropical water and illustrated the capacity of eddies to transfer subtropical and along-slope water properties, such as nutrients, into the subantarctic zone (Arhan et al., 2011).

4.2 Biogeochemical features of the central and southern Antarctic Circumpolar Current domain and the Weddell Gyre

4.2.1 The diatom bloom along the Polar Front

In the surface waters, the nutrients distributions showed meridional gradients with a southward increase, whereas the location of the sharp increase differed for the silicate gradient relative to the nitrate and phosphate (Fig. 2). The highest gradient of silicate was indeed located southward of the PF in these late summer conditions, while for nitrate and phosphate they were highest at the PF (Fig. 2), consistently with previous observations (Pollard et al., 2002). In the Polar Frontal Zone, silicate concentrations were lower in the late austral summer (this study) compared to spring (e.g. October 1992; Löscher, 1999), while nitrate and phosphate levels were within the same range (Table 1). This suggests that silicate is depleted over the productive season in the PFZ, unlike nitrate and phosphate. Similar southward move of the sharp gradient of silicate across the PF from spring towards late austral summer has already been observed in the Pacific sector of the Southern Ocean (Franck et al., 2000; Nelson et al., 2002). Conversely, the southern side of the ACC was marked by relatively high silicate levels (and high nitrate and phosphate) in the surface waters, with no seasonal variability (Table 1). The spatial and temporal variability of the silicate gradient in the vicinity of the PF is caused by the migration of the PF, and by the shifts in space and time of the production of the Antarctic diatoms (Bathmann et al., 1997; Pollard et al., 2002). Early spring blooms of large diatoms are indeed reported in the Polar Frontal Zone (Bathmann, 1998). These blooms cause the depletion of silicate in the Polar Frontal Zone over the productive season, hence resulting in the southward migration of the sharp gradient of silicate observed here in late summer. Besides the depletion of silicate (Fig. 2), the extremely low concentrations of Chl *a* and phaeopigments reported here (Fig. 4) associated with the relative accumulation of ammonium (Fig. 3) further reflected a post-diatom blooms situation centred on the PF during the late summer conditions. The flourishing diatoms are heavy silicified due to iron limitation (De Baar et al., 1997), whereas their biological uptake of nitrate can decrease (De La Rocha et al., 2000). This causes a strong depletion of silicate relative to nitrate. In the surface waters of the diatoms post-bloom area, the value of Si^* (defined as $[\text{Si}]-[\text{NO}_3]$;

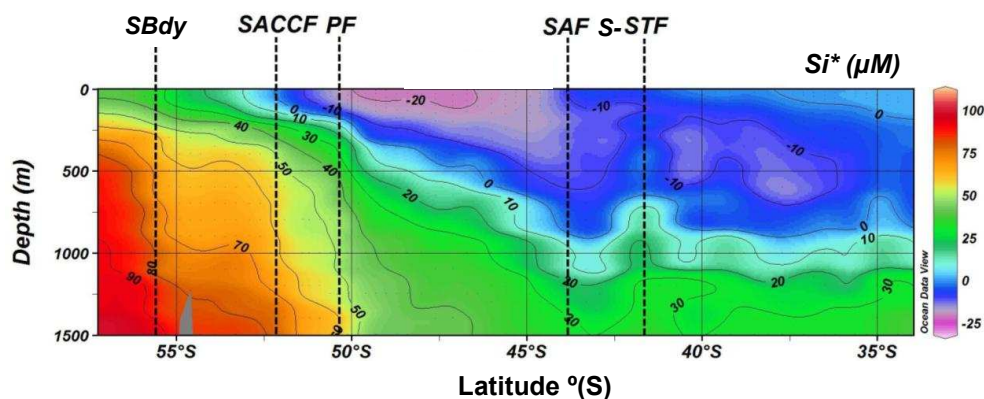


Fig. 7. Contour plot of Si^* (defined as $[\text{Si}]-[\text{NO}_3^-]$) in μM ; Sarmiento et al., 2004) in the upper 1500 m along the MD166 BONUS-GoodHope section. Figure prepared using Ocean Data View (Schlitzer, 2012).

Table 1. Surface concentrations of silicate and nitrate (> 200 m) recorded in the several oceanic provinces of the Southern Ocean delimited by the frontal systems at different seasons

Area	Longitude	Season	[silicate] (μM)	[nitrate] (μM)	[phosphate] (μM)	Reference
North STF	45° E	Jan./Mar.	1–6	0–7	0–1.6	Mohan et al. (2004)
	0° E	Feb./Mar.	0–5	0–5	0–1.5	This study
STF-SAF	45° E	Jan./Mar.	2–10	1–23	0–1.5	Mohan et al. (2004)
	0° E	Feb./Mar.	0–5	5–20	0.3–1.6	This study
SAF-PF	6° E	Oct.	18–73	24–32	1.2–1.9	Löscher et al. (1997)
	6° E	Nov.	1–60	23–35	1.1–2.0	Löscher et al. (1997)
	0° E	Feb./Mar.	0–5	15–30	1.2–2.3	This study
PF-SACCF	6° E	Oct.	28–82	27–36	1.8–2.3	Löscher et al. (1997)
	6° E	Nov.	27–87	27–35	1.9–2.5	Löscher et al. (1997)
	0° E	Feb./Mar.	0–41	25–35	1.6–2.5	This study
SACCF-SBdy	6° E	Oct.	28–82	27–36	1.8–2.3	Löscher et al. (1997)
	6° E	Nov.	27–87	27–35	1.9–2.5	Löscher et al. (1997)
	0° E	Feb./Mar.	41–72	26–35	1.7–2.4	This study

Sarmiento et al., 2004) was indeed negative (Fig. 7), further suggesting a decoupling between the silicon and nitrogen export in the vicinity of the PF. These blooms generate intense flux of BSi towards the deep ocean. The BSi is remineralized slowly in the deep ocean (Tréguer and Jacques, 1992), resulting in relatively high opal levels in the sediment of the Polar Frontal Zone (DeMaster, 1981). Within the PF, the lower BSi concentrations in the upper water column compared to that observed in the central PFZ (Fig. 5) can be due to an increase in export of particulate material, as exemplified by the relatively high ^{234}Th derived POC export recorded at $\sim 51^\circ\text{S}$ (Planchon et al., 2012). POC and PON concentrations were also low at the PF (Fig. 5), consistent with an efficient export of particulate material. The export of POC has been estimated between 2.6 and $4.7 \text{ mmol C m}^{-2} \text{ d}^{-1}$ in the PFZ (Planchon et al., 2012), and the export of BSi to be approximately $3 \text{ mmol Si m}^{-2} \text{ d}^{-1}$ (Fripiat et al., 2011). Using these

estimates, the C/Si ratio in the exported material ranges between 0.9 and 1.6 in the PFZ, a ratio lower than those expected in diatoms (e.g. ~ 7 , Brzezinski, 1985). Production of heavily silicified diatoms due to iron limitation (De La Rocha et al., 2000) may have caused the increase of BSi relative to organic carbon in the exported material within the PFZ and PF. Large Antarctic diatoms such as *Chaetoceros brevis* and *Actinocyclus* sp. have a higher requirement for DFe than smaller Antarctic diatoms like *Chaetoceros dictyota*, with half-saturation constants for DFe of 1.12–1.14 nM and 0.59 pM, respectively, for large and smaller species (Timmermans et al., 2001, 2004). Hence, the low DFe concentrations observed in surface waters around the PF (0.121–0.249 nM; Chever et al., 2010) would be strongly limiting the growth of the large Antarctic diatoms, and less severely the growth of the smaller species. A recent study suggests, however, that iron limitation in the Southern Ocean can be

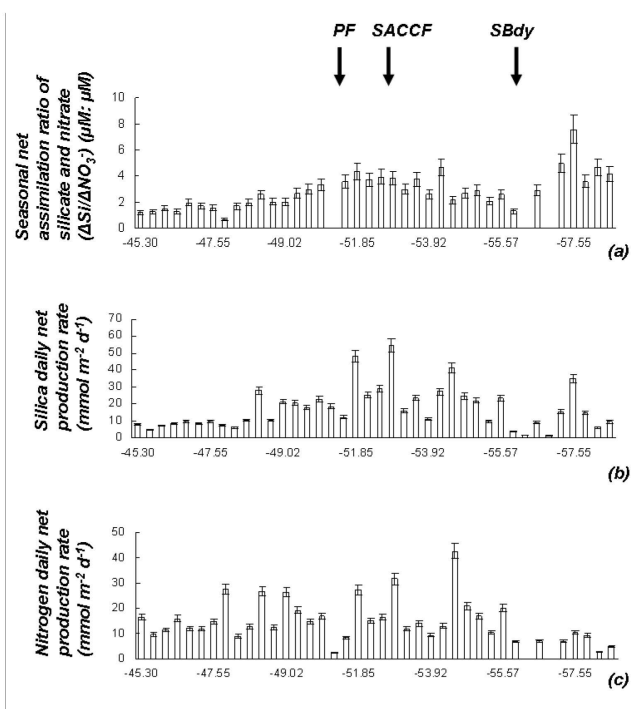


Fig. 8. (a) Seasonal net assimilation ratio of silicate and nitrate ($\Delta\text{Si}/\Delta\text{NO}_3^-$) in the surface waters in the Antarctic Circumpolar Current (ACC) along the MD-166 BONUS-GOODHOPE cruise (see text for calculation method). Front positions are indicated: (b) silica daily net production rate ($\text{mmol m}^{-2} \text{d}^{-1}$) and (c) nitrogen daily net production rate ($\text{mmol m}^{-2} \text{d}^{-1}$) (see text for calculation methods). All the uncertainties are based on observations that nitrate and silicate concentrations in the remnant winter waters are within $\pm 7\%$ of that at the sea surface.

less severe than previously estimated (Strzepek et al., 2011). Furthermore, DFe concentrations recorded during the cruise (Chever et al., 2010) may not reflect the DFe concentrations at the beginning of the productive season, which were likely higher.

The Antarctic Intermediate Water (AAIW) and Subantarctic Mode Water (SAMW) transport nutrients within the thermocline, which can drive a large part of the primary and export production at low latitudes (Sarmiento et al., 2004). However, the production of SAMW can be insignificant in the Atlantic sector of the Southern Ocean (Whitworth and Nowlin, 1987; McCartney, 1975). The water masses encountered along the section did not reveal the occurrence of SAMW. Contrastingly, the Atlantic variety of AAIW formed in the subantarctic region of the southwest Atlantic (A-AAIW; Piola and Gordon, 1989) was depicted in the ACC south of the Agulhas Ridge, as those waters subduct northward along the SAF (Arhan et al., 2011). These waters were also observed in the southern side of the subtropical domain (Arhan et al., 2011). These waters were characterized by negative Si^* values ($< -10 \mu\text{M}$; Fig. 7), reflecting the nutrient

depletion of silicate (and to a lesser extent of nitrate) in the PFZ (Fig. 2) generated by the early spring diatom bloom. According to the model (Sarmiento et al., 2004), the negative Si^* signature of the A-AAIW can lead to a decrease in export production outside the Southern Ocean as these waters likely fuel the low latitudes productivity with nutrients. Furthermore, Si^* is deemed to be an indicator of nutrient status related to the requirements of diatoms, provided Si/N ratio of non-starving diatoms (e.g. by light, macro- and micro-nutrients) is close to 1 (Brzezinski, 1985), which requires $\text{Si}^* \geq 0$ (Sarmiento et al., 2004). Thus, the negative value of Si^* recorded in the A-AAIW can provide indirect evidence of limiting conditions for diatom growth in the upper layers of the Polar Front region during summer conditions.

Estimations of the seasonal net silicate/nitrate removal ratios ($\Delta\text{Si}/\Delta\text{NO}_3^-$) (e.g. biological uptake minus regeneration) in the mixed layer of the ACC domain varied from 0.7/1 to $4.8/1 \mu\text{M} \mu\text{M}^{-1}$ (Fig. 8a). Those estimates were similar to those previously recorded in the Indian sector of the Southern Ocean (Le Corre and Minas, 1983) and in the Weddell Sea (Hoppema et al., 2007). Furthermore, the $\Delta\text{Si}/\Delta\text{NO}_3^-$ ratios estimated in the diatom post-bloom region were above 1 (Fig. 8a), suggesting a lower seasonal net nitrate uptake relative to that of silicate. This is in line with the decrease of nitrate uptake rate and the unaffected silicate uptake rate of diatoms observed in culture experiments under Fe-depleted conditions (De La Rocha et al., 2000). Nevertheless, the seasonal net nitrogen and dissolved silicon removal may be higher than that estimated for nitrate (ΔNO_3^-) and silicate (ΔSi) due to the nitrite oxidation and the remineralisation of BSi, respectively, as neither were considered in our estimations. Another silicate assimilation rate based on a mass balance in the mixed layer was estimated on average at $3.0 \pm 0.8 \text{ mol Si m}^{-2} \text{ yr}^{-1}$ south of the PF (Fripiat et al., 2011), which can also be underestimated due to the supply of dissolved silicon to the mixed layer during the stratification period (Fripiat et al., 2011). Therefore, the seasonal net assimilation ratio $\Delta\text{Si}/\Delta\text{NO}_3^-$ could be actually higher than our estimates, but still supporting lower seasonal net nitrate consumption as compared to that of silicate.

The silica daily production rate (PSi) ranged from 1.5 to $55.5 \text{ mmol m}^{-2} \text{ d}^{-1}$ in the ACC domain (Fig. 8b). These values are similar to those reported at these latitudes (Table 2; Pondaven et al., 2000). P Si was slightly higher in the vicinity of the PF (Fig. 8b), in line with the diatom post-bloom condition. Iron-limited Antarctic diatom blooms of *Fragilariopsis kerguelensis* reported at these latitudes in spring (Bathmann et al., 1997; de Baar et al., 1997) accumulate a large amount of silicate to grow, possibly accounting for the relatively higher P Si in the vicinity of the PF. Nevertheless, the silica daily production rates could have been underestimated by not taking into account additional Si inputs in the surface waters. The nitrogen daily production rate (PN) spreads from 2.3 to $48.4 \text{ mmol m}^{-2} \text{ d}^{-1}$ in surface waters of the ACC, with no significant meridional trend (Fig. 8c). This range is

Table 2. Comparison of the estimated daily net production rate of silica (PSi, $\text{mmol m}^{-2} \text{d}^{-1}$) and nitrate (PN, $\text{mmol m}^{-2} \text{d}^{-1}$) in the Atlantic sector of the Southern Ocean during summer 2008 (this study) and in 1994 (Pondaven et al., 2000).

Area	PSi ($\text{mmol m}^{-2} \text{d}^{-1}$)	PN ($\text{mmol m}^{-2} \text{d}^{-1}$)	Reference
SAF-PF	$11.9 \pm 6.5^*$	$16.1 \pm 6.1^*$	This study
	20.2 ± 4.4	16.1 ± 8.8	Pondaven et al. (2000)
PF-SBdy	$21.1 \pm 8.8^*$	$14.2 \pm 9.5^*$	This study
	30.3 ± 6.0	13.5 ± 6.7	Pondaven et al. (2000)

*Uncertainties are calculated from the confidence interval of the mean $p < 0.05$.

similar to those reported at these latitudes (Table 2; Pondaven et al., 2000). As already mentioned, the nitrogen daily production rates may have been underestimated since the nitrite oxidation rate was ignored here, whereas recent studies about nitrification suggest that the nitrification can be significant in the photic zone (Yool et al., 2007).

4.2.2 The Weddell Gyre

Relatively high levels of BSi persisted in the upper water column (Fig. 5), possibly suggesting a low dissolution rate of BSi leading to an accumulation of BSi. Low temperatures are deemed to limit the BSi dissolution rate (Natori et al., 2006). Another interesting feature of the northern branch of the Weddell Gyre is the relatively small depletion of silicate (at stations 103–104), associated with a slight increase of Chl *a* and phaeopigments concentrations (Fig. 4), suggesting a late stage of a relatively minor diatom bloom. The diatom-dominated assemblage observed here contained degraded frustules with small or absent chloroplasts (Beker and Boye, 2010), also suggesting a late stage of a diatom bloom. Such production of diatoms has been already reported south of the SBdy (Arrigo et al., 1999).

In the Weddell Gyre, surface DFe was fairly low although more variable than in the PFZ (e.g. $0.064\text{--}0.313 \text{ nM}$; Chever et al., 2010). Such low DFe would strongly limit the growth of the large Antarctic diatoms such as *Chaetoceros brevis* and *Actinocyclus* sp. (e.g. half-saturation constant for DFe of $1.12\text{--}1.14 \text{ nM}$; Timmermans et al., 2001, 2004). However, it is possible that sea-ice melting stimulated the diatom production, as recently suggested in the Weddell Sea (Smith et al., 2007), providing sea-ice can be a source of iron to the surrounding waters (Boye et al., 2001; Lannuzel et al., 2008; Klunder et al., 2011; Boyd et al., 2012) that can support local and episodic diatom production. Despite being late in the season and at northerly latitudes of the Weddell Gyre ($55\text{--}57^\circ \text{ S}$), a large number of drifting icebergs were indeed observed there, which can support this hypothesis.

In the Weddell Gyre, PSi and PN were similar compared to the ACC (Fig. 8b–c), suggesting that consumption of Si

and N were comparable in the ACC and in the Weddell Gyre on the seasonal timescale.

5 Conclusions

Comprehensive datasets of several biogeochemical parameters were presented in the under-sampled HNLC region of the Southern Ocean during late summer. Different biogeochemical provinces were identified in the southeastern Atlantic and the Southern Ocean based on their previously known biogeochemical features. The subtropical region was characterized by oligotrophic conditions with extremely low nutrients concentrations. The confluence zone between the subtropical and the subantarctic domains was characterized by a relative sub-surface maximum of Chl *a* and by the accumulation of particulate matter due to low export production and significant recycled production. In the ACC, the occurrence of a vast diatom post-bloom was depicted in the vicinity of the Polar Front during the late summer. The preferential removal of silicate by diatoms relative to that of nitrate under iron-limited conditions can lead to the surface depletion of silicate in the post-bloom area and the southward migration of the silicate gradient beyond the Polar Front. Coupled biogenic silica production and accumulation throughout the water column suggest that low dissolution has played a significant role in the silicon cycle in the ACC and the Weddell Gyre.

Acknowledgements. We thank the captain and the crew of the French research vessel *Marion Dufresne II* for their wonderful work at sea during the IPY MD166 BONUS-GOODHOPE cruise. The project coordinators and chief scientists of the cruise, S. Speich (LPO, Brest, France) and M. Boye (LEMAR, Brest, France) are gratefully acknowledged. Special thanks also to their collaborators during the cruise, M. Arhan (LPO, Brest, FR) and F. Dehairs (VUB, Brussels, Belgium). We are grateful to the colleagues of the nutrient CTD sampling team, and to Sebastien Aubin (LEMAR) for assisting biogenic silica analyses. This investigation was supported by the French LEFE National Program of INSU at CNRS, the National Agency for Research Funding (ANR–07–BLAN–0146) and the French Polar Institut Paul Emile Victor (IPEV). F. Dehairs is also warmly acknowledged for improving the manuscript. This work was part of the Master degree research of F. A. C. Le Moigne. It is a contribution to the International Polar Year and the International ICED programs.

Edited by: S. Speich



The publication of this article is financed by CNRS-INSU.

References

- Arhan, M., Mercier, H., and Park, Y. H.: On the deep water circulation of the eastern south Atlantic ocean, Deep-Sea Research Part I-Oceanographic Research Papers, 50, 889–916, doi:10.1016/s0967-0637(03)00072-4, 2003.
- Arhan, M., Speich, S., Messenger, C., Dencausse, G., Fine, R. A., and Boye, M.: Anticyclonic and cyclonic eddies of subtropical origin in the subtropical zone south of Africa, J. Geophys. Res., 116, C11004, doi:10.1029/2011JC007140, 2011.
- Arrigo, K. R., Robinson, D. H., Worthen, D. L., Dunbar, R. B., DiTullio, G. R., VanWoert, M., and Lizotte, M. P.: Phytoplankton community structure and the drawdown of nutrients and CO₂ in the Southern Ocean, Science, 283, 365–367, 1999.
- Baker-Yeboah, S., Flierl, G. R., Sutyryn, G. G., and Zhang, Y.: Transformation of an Agulhas eddy near the continental slope, Ocean Sci., 6, 143–159, doi:10.5194/os-6-143-2010, 2010.
- Banse, K.: Rates of phytoplankton cell-division in the field and in iron enrichment experiments, Limnol. Oceanogr., 36, 1886–1898, 1991.
- Bathmann, U. V.: Ecology and biogeochemistry in the atlantic sector of the Southern Ocean during austral spring: The first JGOFS expedition aboard R/V *Polarstern*, J. Marine Syst., 17, 77–85, 1998.
- Bathmann, U. V., Scharek, R., Klaas, C., Dubischar, C. D., and Smetacek, V.: Spring development of phytoplankton biomass and composition in major water masses of the Atlantic sector of the Southern Ocean, Deep-Sea Res. Pt. II, 44, 51–67, 1997.
- Beker, B. and Boye, M.: Phytoplankton assemblages in the Southern Ocean during the International Polar Year. Ocean Sciences Meeting, 22–26 February 2010, Portland, USA, 2010.
- Belkin, I. M. and Gordon, A. L.: Southern Ocean fronts from the Greenwich meridian to Tasmania, J. Geophys. Res.-Oceans, 101, 3675–3696, 1996.
- Bown, J., Boye, M., Baker, A., Duvieilbourg, E., Lacan, F., Le Moigne, F., Planchon, F., Speich, S., and Nelson, D. M.: The biogeochemical cycle of dissolved cobalt in the Atlantic and the Southern Ocean south off the coast of south Africa, Mar. Chem., 126, 193–206, 2011.
- Boyd, P. W., Arrigo, K. R., Strzepek, R., and van Dijken, G. L.: Mapping phytoplankton iron utilization: Insights into southern ocean supply mechanisms, J. Geophys. Res., 117, C06009, doi:10.1029/2011JC007726, 2012.
- Boye, M., Van den Berg, C. M. G., De Jong, J. T. M., Leach, H., Croot, P., and de Baar, H. J.: Organic complexation of iron in the Southern Ocean, Deep-Sea Res. Pt. I, 48, 1477–1497, 2001.
- Branellec, P., Arhan, M., Speich, S.: Projet GoodHope, campagne BONUS-GoodHope, Rapport de données CTD-O₂, Rapport interne IFREMER, OPS/LPO/10-02, 61 pp., 2010.
- Brzezinski, M. A.: The Si/C/N ratio of marine diatoms - interspecific variability and the effect of some environmental variables, J. Phycol., 21, 347–357, 1985.
- Buma, A. G. J., Debaar, H. J. W., Nolting, R. F., and Vanbennek, A. J.: Metal enrichment experiments in the Weddell-Scotia seas - effects of iron and manganese on various plankton communities, Limnol. Oceanogr., 36, 1865–1878, 1991.
- Caldeira, K. and Duffy, P. B.: The role of the Southern Ocean in uptake and storage of anthropogenic carbon dioxide, Science, 287, 620–622, 2000.
- Chever, F., Bucciarelli, E., Sarthou, G., Speich, S., Arhan, M., Penven, P., and Tagliabue, A.: Physical speciation of iron in the atlantic sector of the Southern Ocean along a transect from the subtropical domain to the Weddell Sea gyre, J. Geophys. Res., 115, C10059, doi:10.1029/2009JC005880, 2010.
- de Baar, H. J. W., VanLeeuwe, M. A., Scharek, R., Goeyens, L., Bakker, K. M. J., and Fritsche, P.: Nutrient anomalies in *Fragilariopsis kerguelensis* blooms, iron deficiency and the nitrate/phosphate ratio (a.c. Redfield) of the Antarctic Ocean, Deep-Sea Res. Pt. II, 44, 229–260, 1997.
- De La Rocha, C. L., Hutchins, D. A., Brzezinski, M. A., and Zhang, Y. H.: Effects of iron and zinc deficiency on elemental composition and silica production by diatoms, Mar. Ecol.-Prog. Ser., 195, 71–79, 2000.
- DeMaster, D. J.: The supply and accumulation of silica in the marine environment, Geochim. Cosmochim. Ac., 45, 1715–1732, 1981.
- DeMaster, D. J., Brewster, D. C., McKee, B. A., and Nittrouer, C. A.: Rates of particle scavenging, sediment reworking, and longitudinal ripple formation at the Hebble site based on measurements of ²³⁴Th and ²¹⁰Pb, Mar. Geol., 99, 423–444, 1991.
- Franck, V. M., Brzezinski, M. A., Coale, K. H., and Nelson, D. M.: Iron and silicate concentrations regulate Si uptake north and south of the Polar Frontal Zone in the Pacific sector of the Southern Ocean, Deep-Sea Res. Pt. II, 47, 3315–3338, 2000.
- Fripiat, F., Cavagna, A.-J., Dehairs, F., Speich, S., André, L., and Cardinal, D.: Silicon pool dynamics and biogenic silica export in the Southern Ocean inferred from Si-isotopes, Ocean Sci., 7, 533–547, doi:10.5194/os-7-533-2011, 2011.
- Frost, B. W.: Phytoplankton bloom on iron ratios, Nature, 383, 475–476, 1996.
- Gladyshev, S., Arhan, M., Sokov, A., and Speich, S.: A hydrographic section from south Africa to the southern limit of the Antarctic Circumpolar Current at the Greenwich meridian, Deep-Sea Res. Pt. I, 55, 1284–1303, doi:10.1016/j.dsr.2008.05.009, 2008.
- Gordon, A. L., Weiss, R. F., Smethie, W. M., and Warner, M. J.: Thermocline and intermediate water communication between the south-Atlantic and Indian oceans, J. Geophys. Res.-Oceans, 97, 7223–7240, 1992.
- Ho, T. Y., Quigg, A., Finkel, Z. V., Milligan, A. J., Wyman, K., Falkowski, P. G., and Morel, F. M. M.: The elemental composition of some marine phytoplankton, J. Phycol., 39, 1145–1159, 2003.
- Hoppema, M., Middag, R., de Baar, H. J. W., Fahrback, E., van Weerlee, E. M., and Thomas, H.: Whole season net community production in the Weddell Sea, Polar Biol., 31, 101–111, doi:10.1007/s00300-007-0336-5, 2007.
- Joubert, W. R., Thomalla, S. J., Waldron, H. N., Lucas, M. I., Boye, M., Le Moigne, F. A. C., Planchon, F., and Speich, S.: Nitrogen uptake by phytoplankton in the Atlantic sector of the Southern Ocean during late austral summer, Biogeosciences, 8, 2947–2959, doi:10.5194/bg-8-2947-2011, 2011.
- Klunder, M. B., Laan, P., Middag, R., de Baar, H. J. W., and van Ooijen, J. C.: Dissolved Fe in the Southern Ocean (Atlantic sector), Deep-Sea Res. Pt. II, 58, 2678–2694, doi:10.1016/j.dsr.2010.10.042, 2011.
- Koroleff, F.: Direct determination of ammonia in natural water as indophenol blue, Information on Techniques and Methods for the

- Seawater Analysis, 1969.
- Lannuzel, D., Schoemann, V., de Jong, J., Chou, L., Delille, B., Becquevort, S., and Tison, J.-L.: Iron study during a time series in the western Weddell pack ice, *Mar. Chem.*, 108, 85–95, 2008.
- Le Corre, P. and Minas, H. J.: Distribution et évolution des éléments nutritifs dans le secteur indien de l'Océan Antarctique en fin de période estivale, *Oceanol. Acta*, 6, 365–381, 1983.
- Longhurst, A. R.: Large marine ecosystems – patterns, processes and yields, *Mar. Policy*, 15, 377–378, 1991.
- Lorrain, A., Savoye, N., Chauvaud, L., Paulet, Y. M., and Naullet, N.: Decarbonation and preservation method for the analysis of organic C and N contents and stable isotope ratios of low-carbonated suspended particulate material, *Anal. Chim. Acta*, 491, 125–133, doi:10.1016/s0003-2670(03)00815-8, 2003.
- Löscher, B. M.: Relationships among Ni, Cu, Zn, and major nutrients in the Southern Ocean, *Mar. Chem.*, 67, 67–102, 1999.
- Lutjeharms, J. R. E. and Vanballegooyen, R. C.: The retroflection of the Agulhas current, *J. Phys. Oceanogr.*, 18, 1570–1583, 1988.
- Lutjeharms, J. R. E., Boebel, O., and Rossby, H. T.: Agulhas cyclones, *Deep-Sea Res.*, 50, 13–34, 2003.
- Marinov, I., Gnanadesikan, A., Toggweiler, J. R., and Sarmiento, J. L.: The Southern Ocean biogeochemical divides, *Nature*, 441, 964–967, doi:10.1038/nature04883, 2006.
- Martin, J. H.: Glacial-interglacial CO₂ change: The iron hypothesis, *Paleoceanography*, 5, 1–13, 1990.
- McCartney, M. S.: Subantarctic Mode Water, *EOS T. Am. Geophys. UN*, 56, 1011–1011, 1975.
- Mohan, R., Mergulhao, L. P., Guptha, M. V. S., Rajakumar, A., Thamban, M., AnilKumar, N., Sudhakar, M., and Ravindra, R.: Ecology of coccolithophores in the Indian sector of the Southern Ocean, *Mar. Micropaleontol.*, 67, 30–45, doi:10.1016/j.marmicro.2007.08.005, 2004.
- Murphy, J. and Riley, J. P.: A modified single solution method for the determination of phosphorus in natural waters, *Anal. Chim. Acta*, 27, 31–36, 1962.
- Natori, Y., Haneda, A., Suzuki, Y.: Vertical and seasonal differences in biogenic silica dissolution in natural seawater in Suruga Bay, Japan: Effects of temperature and organic matter, *Mar. Chem.*, 102, 230–241, 2006.
- Nelson, D. M. and Smith, W. O.: Sverdrup revisited – critical depths, maximum chlorophyll levels, and the control of southern-ocean productivity by the irradiance-mixing regime, *Limnol. Oceanogr.*, 36, 1650–1661, 1991.
- Nelson, D. M., Anderson, R. F., Barber, R. T., Brzezinski, M. A., Buesseler, K. O., Chase, Z., Collier, R. W., Dickson, M. L., Francois, R., Hiscock, M. R., Honjo, S., Marra, J., Martin, W. R., Sambrotto, R. N., Sayles, F. L., and Sigmon, D. E.: Vertical budgets for organic carbon and biogenic silica in the Pacific sector of the Southern Ocean, 1996–1998, *Deep-Sea Res. Pt. II*, 49, 1645–1674, 2002.
- Orsi, A. H., Whitworth, T., and Nowlin, W. D.: On the meridional extent and fronts of the Antarctic Circumpolar Current, *Deep-Sea Res. Pt. I*, 42, 641–673, 1995.
- Partensky, F., Hess, W. R., and Vaulot, D.: *Prochlorococcus*, a marine photosynthetic prokaryote of global significance, *Microbiol. Molecular Biol. Rev.*, 63, 106–127, 1999.
- Piola, A. R. and Gordon, A. L.: Intermediate waters in the southwest Atlantic, *Deep-Sea Res. A*, 36, 1–16, 1989.
- Planchon, F., Cavagna, A.-J., Cardinal, D., André, L., and Dehairs, F.: Late summer particulate organic carbon export and twilight zone remineralisation in the Atlantic sector of the Southern Ocean, *Biogeosciences Discuss.*, 9, 3423–3477, doi:10.5194/bgd-9-3423-2012, 2012.
- Pollard, R. T., Lucas, M. I., and Read, J. F.: Physical controls on biogeochemical zonation in the Southern Ocean, *Deep-Sea Res. Pt. II*, 49, 3289–3305, 2002.
- Pondaven, P., Ragueneau, O., Tréguer, P., Hauvespre, A., Dezileau, L., and Reyss, J. L.: Resolving the 'opal paradox' in the Southern Ocean, *Nature*, 405, 168–172, 2000.
- Quéguiner, B., Tréguer, P., Peeken, I., and Scharek, R.: Biogeochemical dynamics and the silicon cycle in the Atlantic sector of the Southern Ocean during austral spring 1992, *Deep-Sea Res. Pt. II*, 44, 69–89, 1997.
- Ragueneau, O., Dittert, N., Pondaven, P., Tréguer, P., and Corrin, L.: Si/C decoupling in the world ocean: Is the Southern Ocean different?, *Deep-Sea Res. Pt. II*, 49, 3127–3154, 2002.
- Ragueneau, O., Savoye, N., Del Amo, Y., Cotten, J., Tardiveau, B., and Leynaert, A.: A new method for the measurement of biogenic silica in suspended matter of coastal waters: Using Si:Al ratios to correct for the mineral interference, *Cont. Shelf Res.*, 25, 697–710, doi:10.1016/j.csr.2004.09.017, 2005.
- Sarmiento, J. L. and Toggweiler, J. R.: A new model for the role of the oceans in determining atmospheric pCO₂, *Nature*, 308, 621–624, 1984.
- Sarmiento, J. L., Gruber, N., Brzezinski, M. A., and Dunne, J. P.: High-latitude controls of thermocline nutrients and low latitude biological productivity, *Nature*, 427, 56–60, doi:10.1038/nature02127, 2004.
- Schlitzer, R.: Ocean Data View, <http://odv.awi.de>, 2012.
- Smith, K. L., Robison, B. H., Helly, J. J., Kaufmann, R. S., Ruhl, H. A., Shaw, T. J., Twining, B. S., and Vernet, M.: Free-drifting icebergs: Hot spots of chemical and biological enrichment in the Weddell Sea, *Science*, 317, 478–482, doi:10.1126/science.1142834, 2007.
- Strickland, J. D. H. and Parsons, T. R.: A practical handbook of seawater analysis, Fisheries Research Board of Canada, 2nd Edn., 1972.
- Strzepek, R. F., Maldonado, M. T., Hunter, K. A., Frew, R. D., and Boyd, P. W.: Adaptive strategies by Southern Ocean phytoplankton to lessen iron limitation: Uptake of organically complexed iron and reduced cellular iron requirements, *Limnol. Oceanogr.*, 56, 1983–2002, 2011.
- Timmermans, K. R., Gerringa, L. J. A., de Baar, H. J. W., van der Wagt, B., Veldhuis, M. J. W., de Jong, J. T. M., Croot, P. T., and Boye, M.: Growth rates of large and small Southern Ocean diatoms in relation to availability of iron in natural seawater, *Limnol. Oceanogr.*, 46, 260–266, 2001.
- Timmermans, K. R., van der Wagt, B., and de Baar, H. J. W.: Growth rates, half-saturation constants, and silicate, nitrate, and phosphate depletion in relation to iron availability of four large, open-ocean diatoms from the Southern Ocean, *Limnol. Oceanogr.*, 49, 2141–2151, 2004.
- Timmermans, K. R., van der Wagt, B., Veldhuis, M. J. W., Maatman, A., de Baar, H. J. W.: Physiological responses of three species of marine pico-phytoplankton to ammonium, phosphate, iron and light limitation, *J. Sea Res.*, 53, 109–120, 2005.

- Tréguer, P. and Le Corre, P.: Ratios of nitrate, phosphate, and silicate during uptake and regeneration phases of the Moroccan upwelling regime, *Deep-Sea Res. A*, 26, 163–184, 1979.
- Tréguer, P. and Jacques, G.: Dynamics of nutrients and phytoplankton, and fluxes of carbon, nitrogen and silicon in the Antarctic Ocean, *Polar Biol.*, 12, 149–162, 1992.
- Wilhelm, S.: Ecology of iron-limited cyanobacteria: a review of physiological responses and implications for aquatic systems, *Aquat. Microb. Ecol.*, 9, 295–303, 1995.
- Whitworth, T. and Nowlin, W. D.: Water masses and currents of the Southern Ocean at the Greenwich meridian, *J. Geophys. Res.-Oceans*, 92, 6462–6476, 1987.
- Yool, A., Martin, A. P., Fernandez, C., and Clark, D. R.: The significance of nitrification for oceanic new production, *Nature*, 447, 999–1002, doi:10.1038/nature05885, 2007.
- Zhang, Y., Jiao, N. Z., and Hong, N.: Comparative study of picoplankton biomass and community structure in different provinces from subarctic to subtropical oceans, *Deep-Sea Res. Pt. II*, 55, 1605–1614, 2008.