



HAL
open science

Recent population expansion and connectivity in the hydrothermal shrimp *Rimicaris exoculata* along the Mid Atlantic Ridge

Sara Teixeira, Marie-Anne Cambon-Bonavita, Ester Serrão, Daniel Desbruyeres, Sophie Arnaud-Haond

► To cite this version:

Sara Teixeira, Marie-Anne Cambon-Bonavita, Ester Serrão, Daniel Desbruyeres, Sophie Arnaud-Haond. Recent population expansion and connectivity in the hydrothermal shrimp *Rimicaris exoculata* along the Mid Atlantic Ridge. *Journal of Biogeography*, 2011, 38 (3), pp.564-574. 10.1111/j.1365-2699.2010.02408.x. hal-00617580

HAL Id: hal-00617580

<https://hal.univ-brest.fr/hal-00617580>

Submitted on 5 Sep 2013

HAL is a multi-disciplinary open access archive for the deposit and dissemination of scientific research documents, whether they are published or not. The documents may come from teaching and research institutions in France or abroad, or from public or private research centers.

L'archive ouverte pluridisciplinaire **HAL**, est destinée au dépôt et à la diffusion de documents scientifiques de niveau recherche, publiés ou non, émanant des établissements d'enseignement et de recherche français ou étrangers, des laboratoires publics ou privés.

1 Article type: Original Article

2 Recent population expansion and connectivity in the hydrothermal shrimp
3 *Rimicaris exoculata* along the Mid-Atlantic Ridge

4

5 Sara Teixeira ^{1,2}, Marie-Anne Cambon-Bonavita ³, Ester A. Serrão ², Daniel Desbruyères ¹, Sophie
6 Arnaud-Haond ^{1*}

7 ¹Department “Environnement Profond” Centre de Brest de l’IFREMER, B.P. 70, 2980 Plouzané,
8 France

9 ²Centre of Marine Sciences, CIMAR, University of Algarve, Campus of Gambelas, 8005-139 Faro,
10 Portugal

11 ³ Ifremer Centre de Brest, Laboratoire de Microbiologie des Environnements Extrêmes,
12 DEEP/LMEE, UMR 6197 UBO-CNRS-Ifremer, 29280 Plouzané, France

13 *Corresponding author: Sophie Arnaud-Haond, Department “Environnement Profond” Centre de
14 Brest de l’IFREMER, B.P. 70, 2980 Plouzané, France. E-mail: Sophie.Arnaud@ifremer.fr

15

16 Running head: Genetic diversity of a hydrothermal vent shrimp

17

18 **Abstract**

1 **Aim:** Deep-sea hydrothermal vents are unstable habitats that are both spatially and temporally
2 fragmented. In vent species, a ‘short-term insurance’ hypothesis would lead us to expect mostly self
3 recruitment, limiting the loss of larvae in the deep ocean or water column and increasing genetic
4 differentiation over the time elapsed since colonization. Alternatively, a ‘long-term insurance’
5 hypothesis would support the prediction of selection for large scale dispersal, to ensure long-term
6 persistence in these ephemeral habitats. The main goal of this study was to infer the spatial and
7 temporal distribution of genetic diversity of the shrimp *Rimicaris exoculata*, which forms high
8 density local populations on hydrothermal vents along the Mid-Atlantic ridge.

9 **Location:** Deep-sea hydrothermal vents along the Mid-Atlantic Ridge.

10 **Methods:** We used sequences of mitochondrial cytochrome *c* oxidase subunit I (COI, 710 bp) to
11 assess the spatio-temporal distribution of genetic diversity across five hydrothermal fields from 36
12 °N to 4 °S.

13 **Results:** In contrast to previous results from pioneer studies, very high haplotype diversity was
14 observed in vents across the entire region (i.e. 0.69 to 0.82), indicating current large effective
15 population size and low drift. The star-like shape of the network of haplotypes, the lack of spatial
16 genetic structure and the significance of tests reflecting demographic effects, together with the fitting
17 of a population expansion model, all support a recent population expansion.

18 **Main conclusions:** Our results suggest a very recent common history of *R. exoculata*
19 populations/demes along the Mid-Atlantic Ridge, derived after a common bottleneck or founder
20 event and followed by a concomitant demographic expansion. This study therefore suggests large
21 effective population size and/or high dispersal capacity, as well as a possible recent (re)colonization
22 of the Mid-Atlantic hydrothermal vents by *R. exoculata*.

23

24 **Keywords:** Bottleneck, deep sea biogeography, dispersal, genetic diversity, hydrothermal vents,
25 marine biogeography, Mid-Atlantic Ridge, *Rimicaris exoculata*, spatio-temporal distribution.

1

2 **Introduction**

3 Dispersal plays a central role in both the dynamics and evolution of species. Effective dispersal (i.e.,
4 gene flow) attenuates genetic differences *among* populations and increases the genetic variability
5 *within* populations (Billiard & Lenormand, 2005). Dispersal is a risky strategy as immigrants may
6 never reach a suitable habitat, or face higher mortality and lower reproductive success in the receiver
7 population (Ims & Andreassen, 2000; Garant *et al.*, 2007). Yet, dispersal can also offer clear
8 advantages, particularly in fragmented ephemeral habitats, as it allows areas to be explored for more
9 favourable habitats and extinction to be avoided by escaping locally deteriorating physical or biotic
10 conditions, such as competition (Hamilton & May, 1977; Olivieri *et al.*, 1995). By enabling
11 populations to randomly spread their progeny more evenly among different sites dispersal may
12 indeed represent a favourable bet-hedging strategy in temporally variable or ephemeral ecosystems
13 (Ronce & Olivieri, 2004).

14 Deep-sea hydrothermal vents are an extreme example of a spatially and temporally unstable
15 environment. Environments of this type are scattered worldwide along the global mid-ocean ridge
16 system, and are sometimes thousands of kilometres apart (Tunnicliffe & Fowler, 1996; Van Dover,
17 2000). They are extreme and unique habitats, with communities composed of specialized animals,
18 dependent on chemoautotrophic microorganisms that exploit the reduced compounds (mainly H₂S
19 and CH₄) abundant in vent fluids (Desbruyères *et al.*, 2000). Each hydrothermal vent has a
20 characteristic profile that may differ in depth, temperature and/or chemical composition (Van Dover,
21 2000), adding abiotic heterogeneity to the spatial component of habitat fragmentation that potentially
22 influences the patchy community distribution and limited effective dispersal. Besides the distance
23 separating successive hydrothermal vents, communities may also become genetically isolated across
24 transform faults, which act as potential barriers between populations and limit effective dispersal

1 among sites (Plouviez *et al.*, 2009). This hypothesis is supported by the high levels of endemism
2 found across biogeographic provinces (Van Dover *et al.*, 2002; Fabri *et al.*, 2006; Bachraty *et al.*,
3 2009; Moalic *et al.* submitted) as well as by the rather high genetic differentiation found across some
4 neighbouring sites (e.g. Jollivet *et al.*, 1999; Won *et al.*, 2003; Hurtado *et al.*, 2004; Matabos *et al.*,
5 2008; Young *et al.*, 2008; Plouviez *et al.*, 2009), which indeed suggest a limited effective dispersal
6 over large distances. On the other hand, depending on the sea floor geology and magmatic and
7 tectonic events, individual hydrothermal vents have a relatively short lifespan of 1 to 100 years for
8 fast spreading ridges such as the East Pacific Rise (Hessler *et al.*, 1988; Lalou *et al.*, 1993), and up to
9 300 years in more stable, slow spreading ridges such as the Mid-Atlantic Ridge (Brazelton *et al.*,
10 2010). These common temporal fluctuations in vent activity and changes in the geochemical profile
11 of their habitat prevent long-term local population persistence (Tunnicliffe, 1991; Jollivet, 1996).
12 Those species that escape local extinction due to habitat disappearance and which are capable of
13 (re)colonizing newly active sites may also have the capacity for long-distance effective migration.
14 Species associated with hydrothermal vents should therefore also have good colonization abilities
15 with high rates of dispersal, growth and fecundity (Vrijenhoek, 1997; Tyler & Young, 1999). Indeed,
16 in 1991 the formation of new hydrothermal vents in the East Pacific Rise was studied and,
17 astonishingly, microbe-derived material was found in active areas of the vent immediately following
18 their formation. Within the first year, mobile vent and non-vent fauna such as amphipods, copepods,
19 crabs and non-vent shrimps then proliferated (Shank *et al.*, 1998a). These vastly differing sources of
20 influence lead to contradictory expectations about strategy, which have yet to be tested. On one
21 hand, low effective dispersal and high self recruitment may be favoured across limited distances due
22 to the patchy nature of vent distribution and abiotic characteristics. On the other hand, larger scale
23 dispersal potential may be selected for in the long term, allowing species persistence despite
24 instability of vent activity. Finally, temporal instability (Desbruyères *et al.*, 1998), although

1 apparently less pronounced in the Mid-Atlantic Ridge (MAR) than in the East Pacific Rise (EPR)
2 (Copley *et al.*, 2007 on one site), may also result in short-term changes in genetic composition.

3 Along the Mid-Atlantic Ridge (MAR), vent communities are dominated by shrimps, mussels,
4 anemones and crabs (Tunnicliffe, 1991; Van Dover, 1995). The first described and the most
5 abundant species is the shrimp *Rimicaris exoculata* Williams & Rona, 1986. This species is often
6 present in high-density swarms (> 1500 individuals/m²) around high-temperature sulphide chimneys
7 at deeper hydrothermal vent sites (Segonzac *et al.*, 1993; Copley *et al.*, 1997). The species has highly
8 modified eyes that form a single dorsal organ, which has been suggested to detect black-body
9 radiation associated with high temperature vents (Van Dover *et al.*, 1989; Van Dover, 1995). This
10 shrimp does not seem to be a scavenger or a predator because its gut is filled with minerals, mainly
11 iron oxides and sulphurs, and its nutrition is hypothesized to be derived from several epibiotic
12 bacterial sources, mainly those located in the gill chambers and gut (see Durand *et al.*, 2010 and
13 references therein). Although hydrothermal vents at MAR have been known since 1985 (Rona *et al.*,
14 1986), little is known about population genetic structure of its most abundant shrimp species. Genetic
15 studies conducted to date have focused on clarifying the systematic status of the juvenile morphotype
16 of *R. exoculata* (Creasey *et al.*, 1996; Shank *et al.*, 1998b). The allozyme analyses conducted in these
17 studies showed very low genetic diversity within sites and essentially no genetic differentiation
18 between populations, suggesting that there is high gene flow.

19 The main goal of this study was to infer the spatial and temporal distribution of genetic diversity of
20 *R. exoculata* from different hydrothermal vents along the Mid-Atlantic Ridge, in order to assess the
21 extent of effective population sizes, rates of dispersal and recent demographic histories at these sites.
22 We used mitochondrial cytochrome *c* oxidase subunit I (COI) as a molecular marker to estimate the
23 level of genetic variability in natural populations, to test for genetic subdivision and to obtain
24 insights into population history, dynamics and demography at the ridge level. In order to assess the

1 effect of potential temporal instability of hydrothermal activity and population dynamics of
2 associated species, two of the five populations studied were analysed at time intervals of one or ten
3 years.

4

5 **Materials and Methods**

6 *Sampling and DNA extraction*

7 Samples were collected from five locations corresponding to different hydrothermal vent fields
8 (Rainbow, Logatchev, TAG, Ashadzé and South MAR) along the Mid-Atlantic Ridge (Fig. 1, Table
9 1). For two locations (Rainbow and Logatchev), samples from different years were used to assess
10 temporal variability; a time interval of 10 years (Rainbow 1997 and 2007) and 3 consecutive one
11 year intervals (Logatchev 2005, 2006, 2007) were used. Samples were collected using a slurp-gun
12 from the ROV (Remotely Operated Vehicle) or the Nautilie. Prior to each dive, the bowls used for
13 collecting the shrimps were aseptically washed with ethanol (96 %) before being filled with sterile
14 seawater. Once on board, live specimens were either entirely frozen or immediately dissected into
15 body components under sterile conditions and frozen or stored in 70 % alcohol. DNA extraction was
16 performed using the CTAB (cetyl trimethyl ammonium bromide) method (Doyle & Doyle, 1990) on
17 muscle tissue. Sampling size could not be pre-defined to a constant value across all sampling sites
18 and times due to the overall difficulty in obtaining samples from deep hydrothermal vents; in some
19 sites sampling size was thus limited to the shrimp samples available from Ifremer research cruises
20 for each particular location and time, and (for the 4 °S location) some samples kindly provided by
21 Max Plank Institute (N. Dubilier).

22

1 *Polymerase chain reaction and sequencing*

2 Mitochondrial COI was amplified using the universal primers LCO1490 and HCO2198 described by
3 Folmer *et al.* (1994). All polymerase chain reaction (PCR) amplifications were carried out in 50 μ L
4 volumes containing 50 ng DNA, 1 \times reaction buffer (GoTaq, Promega), 0.2 mM of each dNTP, 2.5
5 mM MgCl₂, 0.4 U Taq DNA polymerase (GoTaq, Promega, Madison, WI, USA) and 0.6 μ M of each
6 primer. The PCR amplification was conducted in a Perkin-Elmer Gene Amp System 7200 (Waltham,
7 MA, USA) with the following program: 2 min. at 95 °C; 35 cycles composed of 1 min denaturation
8 at 95 °C, 1 min at 52 °C and 1.5 min elongation at 72 °C, followed by a final elongation step of 7 min
9 at 72 °C. PCR products were sent to be purified and sequenced commercially at Macrogen, Inc.
10 (Seoul, Korea). Sequences were proofread and aligned using Geneious software (Drummond *et al.*,
11 2009). The 18S rDNA (~1.7 kb) was amplified for 4 individuals of all sampled locations and years
12 (except for the Ashadzé population, where only the three individuals available were amplified) using
13 18S-82F/18S-1498R primers (López-García *et al.*, 2003) and sequenced in an ABI 3130 XL
14 automatic sequencer (Applied Biosystems, Foster City, CA, USA), to provide hints into nuclear
15 variation. The nuclear regions ITS 1 and 2 (~931 bp) were also amplified for four individuals of
16 three populations (Rainbow, Logatchev and South MAR) using the primer pair ITS 1 and 4 (Kumar
17 & Shukla, 2005). The obtained sequences were cloned (PGem-T easy vector, Promega) following the
18 supplier's protocol; four clones per individual were sequenced using the ABI 3130 XL automatic
19 sequencer (Applied Biosystems).

20 No diversity was detected across the 4 individuals from the 5 sites sequenced for 1200 bp of 18S
21 rDNA. The amplified regions ITS1 and 2 proved to be too variable to be used: all the sequences
22 obtained were different, including sequences from different clones of the same individual.

23

24 *Data analysis*

1 ARLEQUIN version 3 (Schneider *et al.*, 2000) was used to estimate gene diversity and conduct
2 statistical tests. For each population, the following statistics were computed: haplotype (h) (Nei,
3 1987) and nucleotide diversities (π_2) (Nei, 1987), and mean number of pairwise differences (π_1)
4 (Tajima, 1983). For populations with significantly different sample sizes, a re-sampling method was
5 applied using R to generate files for 100 random re-samplings of the population haplotype
6 frequencies to a minimum common size. The 100 generated files were then analysed with the batch
7 file function of ARLEQUIN software to re-estimate gene diversity in these sub-samples. To assess
8 population differentiation, pairwise F_{ST} values were calculated following the method of Hudson *et*
9 *al.* (1992) and exact tests of differentiation were conducted following the method of Raymond &
10 Rousset (1995).

11 In order to analyse and illustrate the phylogenetic relationships among haplotypes, i) a median-
12 joining network was constructed using Network v. 4.1.0.9 (Bandelt *et al.*, 1999) to infer the most
13 parsimonious branch connections between the sampled haplotypes, and ii) a neighbour-joining
14 phylogram was constructed using the mutation model HKY (Geneious software; Drummond *et al.*,
15 2009) and the bresiliid sister species *Alvinocaris* sp. as an outgroup.

16 We tested whether the sampled populations fitted mutation drift equilibrium expectations, and
17 assessed which population demographic model was most appropriate, i.e. the size-stationary model
18 or the expansion model. We determined Fu's F_s (Fu, 1996) and Tajima's D (Tajima, 1989), which
19 are sensitive to departures from both selective neutrality and from population size equilibrium caused
20 by expansions or bottlenecks (Tajima, 1996; Fu, 1997). Both statistics result in negative values after
21 a population expansion (Ray *et al.*, 2003) or a selective sweep, whereas positive values are expected
22 under balancing selection of recent bottlenecks. ARLEQUIN was used to perform tests and estimate
23 the associated P -values. Mismatch curves were drawn for each population and observed values were

1 compared to the expected curves fitted for the constant population size model and for the population
2 growth/decline model, using the DnaSP 4.0 program (Rozas *et al.*, 2003).

3

4 **Results**

5 *Genetic diversity and population differentiation*

6 A total of 47 haplotypes were recovered from the 152 individuals analysed, 30 (63.8 %) of the
7 haplotypes were “private”, i.e. unique to a single locality (Table 2; Fig. 1; accession numbers:
8 HM125910 to HM125956). The most common haplotype was present in all population samples and
9 was the most abundant haplotype across all populations, identified in 49 % of all the sampled
10 individuals across the entire study region. This main haplotype was also central to all other
11 haplotypes, most of these represented by a single individual and divergent by a single point mutation,
12 leading to this haplotype being the core of a star-like cluster topography (Fig. 2). The remaining
13 haplotypes (36.2 %), although not unique, were mainly (27.7 %) represented by only one individual
14 in each population. Accordingly, the neighbour-joining phylogram revealed extremely unresolved
15 clusters supported by poor bootstrap values (see Appendix S1 in Supporting Information).

16 At a temporal scale of a 10-year sampling interval (Rainbow 1997 and 2007), the unique haplotypes
17 (present in one year and not on the other) represented 56 % of the total haplotypes found, whereas on
18 the temporal scale of a one year sampling interval (Logatchev 2005, 2006, 2007) the proportion of
19 unique haplotypes was higher (88.5 %).

20 Haplotype diversity (h) was high, ranging from 0 to 1 in populations with small sample sizes
21 (Ashadzé: 3 individuals and 1 haplotype; South MAR: 4 individuals and 4 haplotypes) and 0.69 to
22 0.82 in populations with larger sample sizes (>11 individuals). Considering these rather high values

1 of haplotype diversity, nucleotide diversity (π_2) was low, ranging from 0 to 0.0033 (Table 2). Highest
2 diversities were recorded in the South MAR population, although the sample size was very low (4
3 individuals), followed by the Rainbow 2007 population. Populations sampled in more than one year
4 presented different diversity indices across years. The Rainbow population sampled in 2007 showed
5 more polymorphic sites, and higher haplotype and nucleotide diversity than when it was sampled in
6 1997, even though the number of samples was lower in 2007 (26 individual) than in 1997 (32
7 individual). A random re-sampling method was therefore not needed for Rainbow, as the sample
8 with the fewest individuals already presented the higher diversity indices. Random resampling was,
9 however, performed for Logatchev, where samples had more contrasting sizes (12 to 31 individuals)
10 with no obvious diversity trend through time. In order to dissociate a putative biological effect from
11 a sampling size effect, the random re-sampling (100 times) was therefore performed to a minimum
12 common size of 12 individuals per sampling time, and no significant differences were found in any
13 of the diversity indices over time (Table 3).

14 No significant population differentiation was detected between any of the sampling sites or years
15 using pairwise F_{ST} estimates (Table 4).

16 *Historical demography*

17 Demographic analyses suggested the occurrence of population expansions, as highly significant
18 negative values for Tajima's D and Fu's F_S were obtained for all populations (Table 2). Mismatch
19 distribution curves were consistent with models of population expansion, displaying a unimodal
20 distribution (Fig. 3). When comparing the expected and observed mismatch curves under constant
21 population size *versus* the growth/decline model (Fig. 4), there is an excess of rare variants in the
22 observed curves in relation to that expected under constant population size. Furthermore, the
23 observed curves seem to better follow the expected curve for the growth/decline model.

1

2 **Discussion**

3 The analysis of mtDNA haplotypes from a total of 152 individuals from five discrete vent localities
4 along the Mid-Atlantic Ridge showed an overall high genetic variability within the studied
5 populations. Both the number of haplotypes per population (1 to 16) and gene diversity (0.69 to 0.82)
6 are within the range of values found for other vent organisms studied with the same marker,
7 including tubeworms (e.g. *Riftia pachyptila*, *Alvinella pompejana*), limpets (e.g. *Lepetodrilus*
8 *elevatus*) and bivalves (e.g. *Bathymodiolus azoricus*, *Calyptogena magnifica*) (e.g. Hurtado *et al.*,
9 2004; Johnson *et al.*, 2006; Plouviez *et al.*, 2009). However, these results contradict those obtained
10 for *Rimicaris exoculata* with allozymes, where genetic variability was amongst the lowest reported
11 for vent organisms (Creasey *et al.*, 1996). This may be due to the different properties of the distinct
12 markers because allozymes may exhibit lower polymorphism than mtDNA, possibly associated with
13 protein constraints. Mitochondrial DNA polymorphism is classically considered as less influenced by
14 possible selective processes (Ballard & Whitlock, 2004), although it was recently demonstrated that
15 this may not be a systematic rule (Galtier *et al.*, 2009). In any case, DNA sequences retain more
16 polymorphisms than proteins, as polymorphic DNA sequences include synonymous mutations;
17 higher variability can, therefore, be detected by DNA sequences than by allozymes. On the other
18 hand, a differential imprint of demographic events on mitochondrial *versus* nuclear DNA may be
19 evoked, although lower diversity is usually expected for mtDNA in relation to nuclear DNA, due to
20 the difference in effective population size. Such discrepancies may also be affected by the more
21 restricted sampling that was available for the allozyme study, which included only two sampling
22 locations despite the higher overall number of samples analysed (448 individuals).

1 The rather unresolved phylogram, with low bootstrap values, shows a generally low divergence
2 without a geographical imprint. Together with the non-significant F_{ST} values obtained in this study,
3 these results indicate a lack of geographic partitioning of the numerous but slightly divergent
4 haplotypes among the sampled populations. This lack of genetic structure may be due to several non-
5 mutually exclusive factors: high levels of effective dispersal (gene flow) between all populations of
6 the Mid-Atlantic ridge, i.e., panmixia at the ridge level; large effective population sizes (N_e); and/or
7 recent common population history. The life cycle of *Rimicaris* is poorly understood. Some authors
8 have suggested that *R. exoculata* might feed in the upper water column during larval dispersal
9 (Dixon & Dixon, 1996), and others that the juvenile stages of these shrimp differ physiologically
10 from the adults (Pond *et al.*, 1997; Allen *et al.*, 1998) in traits such as wax-ester reserves and
11 possibly photosynthetically derived lipids. These findings led the authors to hypothesize that the
12 species had a long planktotrophic phase with long-distance migration achieved *via* the surface, so
13 that some of the barriers usually considered, (depth, seafloor topology and transform faults) would
14 not constrain this species. Yet, such a hypothesis implies either a huge risk factor in the case of
15 passive dispersal, or an extremely sophisticated mechanism of active and deterministic migration
16 (that has not been identified so far) allowing a return to hydrothermal habitat at the end of larval
17 development. In any case, whether dispersal occurs *via* the surface or not, the little information
18 available to date on *R. exoculata* suggests a significant dispersal potential either at larval or at adult
19 stage (although no observations of adults away from hydrothermal sites have been reported so far).

20 The low degree of genetic differentiation among populations may also be attributed to a relatively
21 recent common history together with large effective population sizes, which limit genetic drift
22 (Crow, 1986). The scenario of (1) high levels of gene flow and that of (2) low gene flow since a
23 recent divergence and large N_e may both leave similar signatures of low genetic structure of
24 populations. The hypothesis of large effective population sizes limiting drift is concordant with the

1 population biology of this species, as *R. exoculata* is reported to have remarkably high population
2 densities of over 1500 individuals / m² (Copley *et al.*, 1997). Such large population sizes may, in the
3 absence of temporal fluctuation or significant variance in reproductive success, result in large
4 effective population sizes, limiting the differentiating effects of drift. Yet, the haplotype phylogram
5 and network, together with the analyses of population history, indicate a recently very low effective
6 population size as they show: (1) a star-like haplotype network where many new haplotypes are
7 derived from one dominant haplotype via single mutation steps, indicating that they are the product
8 of recent mutation events; (2) negative and highly significant values of Tajima's *D* and Fu's *F_S* tests,
9 as expected under population bottleneck/expansion scenarios; and (3) the expected and observed
10 mismatch curves that follow a growth/decline model. This profile supports a scenario of relatively
11 young populations sharing a recent common history of bottleneck or founder events, and expansion.
12 Recent study of epibionts of the *R. exoculata* gill chamber (Petersen *et al.*, 2009) showed spatial
13 clustering of bacterial sequences across the different sites (Rainbow, Logatchev and South MAR).
14 Such geographical segregation of the symbionts compared to host homogeneity may be due either to
15 the influence of environment on symbionts, or to the very recent common history of *R. exoculata*
16 populations with recent divergence only detectable on short generation symbionts but still
17 undetectable on the genetics of their hosts.

18 The analysis of temporal variability revealed a lack of genetic differentiation among samples
19 separated by time steps of one (Logatchev) and ten years (Rainbow), although within population
20 diversity increased within a decade in Rainbow. In contrast to Logatchev, where no significant
21 differences were observed across three consecutive years, Rainbow exhibited a significantly higher
22 genetic diversity in 2007 compared with ten years earlier, despite the lower sample size and equal
23 number of haplotypes (but more evenly distributed) in 2007. Genetic diversity, quantified both in
24 terms of allelic richness and heterozygosity, increased significantly over the ten year interval in

1 Rainbow, in agreement with a possible ongoing effect of population expansion (Table 2). Such
2 trends were not detected in the diversity indices for the one year interval samples, possibly indicating
3 that temporal variations in diversity are not sufficiently large to be detected over the shorter time
4 scale of one year intervals. The pattern of variability across temporal samples therefore suggests a
5 contemporary expansion, over one decade, at least in Rainbow. However, population growth tests are
6 known not to perform well when population expansion is very recent (Ramos-Onsins & Rozas,
7 2002), and any expansion episodes detected using the growth decline model are, therefore, likely to
8 be older than a decade. Altogether, with the star-like cluster of haplotypes revealing the
9 accumulation of mutations over a recent evolutionary scale, these results imply either successive
10 episodes of expansion or one long-term expansion episode affecting the pattern of haplotype
11 diversity at both ecological and evolutionary time scales.

12 Considering the demographic history of these apparently rather young genetic lineages, which have
13 probably undergone rather recent recolonization and/or expansion events, the lack of genetic
14 differentiation among sites does not allow us to make inferences about the ongoing occurrence of
15 extensive or restricted gene flow among the hydrothermal sites distributed along the Mid-Atlantic
16 Ridge. Yet, in the absence of any selective hypothesis explaining the star-like pattern of COI
17 polymorphism, the hypothesis of such a recent and global (re)colonization also implies a high
18 dispersal potential *per se* in the rather recent past. Recent bottlenecks and/or expansion have also
19 been observed across populations of several hydrothermal invertebrates along other oceanic ridges
20 (Young *et al.*, 2008; Faure *et al.*, 2009; Plouviez *et al.*, 2009) and such profiles of young lineages
21 may be a rule rather than an exception for hydrothermal vent-associated species, due to the dynamic
22 nature of vents subject to recurrent extinction events. In other ridges, such as the East Pacific Rise,
23 most species studied to date also display a clear North/South genetic differentiation and in some
24 cases even highly significant F_{ST} values within the north and south populations (Hurtado *et al.*, 2004;

1 Matabos *et al.*, 2008; Plouviez *et al.*, 2009). This genetic differentiation reported among populations
2 of different vent species may be due to a lower dispersal potential and/or effective population size of
3 these organisms, or to a higher occurrence or strength of physical and abiotic barriers to gene flow,
4 such as transform faults, in the East Pacific Rise than in the Mid-Atlantic Ridge (but see O'Mullan *et*
5 *al.*, 2001). Other species, however, do not exhibit such cleavage (Won *et al.*, 2003; Hurtado *et al.*,
6 2004; Plouviez *et al.*, 2009), which may indicate a species-specific characteristic (such as dispersal
7 potential or population size), or might simply reflect different sampling schemes. Large gaps in the
8 sampling were indeed observed for most species where a north/south cleavage was shown and such a
9 sampling scheme was demonstrated by Audzijonyte & Vrijenhoek (2010) to have the potential to
10 result in artificially inflated F_{ST} values. Yet, in the study of the sister mussel species *Bathymodiolus*
11 *azoricus* and *B. puteoserpentis* and their hybrids (O'Mullan *et al.*, 2001), the clear distinction in
12 species distribution between north (Rainbow, Lucky strike and Menez Gwen vents) and south (Snake
13 Pit and Logatchev vents) along the MAR, suggests the existence of an ancient vicariance event that
14 apparently does not affect *Rimicaris exoculata*, possibly due to a more recent history, higher
15 effective population sizes, or higher dispersal potential in this shrimp species.

16 As few species have been studied so far in the MAR compared with the more extensively studied
17 East Pacific Rise (EPR), a generalized comparison is not yet possible, but a species-specific
18 hypothesis may be put forward to explain the lack of structure observed for *R. exoculata*. High
19 dispersal potential, including long-distance migration as a bet-hedging strategy enabling escape from
20 extinction, is thought to be a factor of risk in a fragmented environment due to the possible loss of
21 progeny in non suitable habitats. In *R. exoculata*, this risk may be compensated by a high fecundity,
22 as suggested for other species (Llodra *et al.*, 2000), and/or by an environmentally driven delay in
23 larval development, suggested by O'Connor *et al.* (2007) to be a possible adaptation associated with
24 large scale dispersal. Moreover, it has been suggested that *R. exoculata* may detect black-body

1 radiation associated with high-temperature vents (Van Dover *et al.*, 1989, Herring *et al.*, 1999); this
2 may be a specific adaptation of this species to locate its exceptional habitat during large scale
3 dispersal, allowing the benefit of the large scale dispersal to be kept while minimizing the associated
4 risk of loss at the time of settlement. However, empirical data have shown that the detection of
5 temperature in seawater may only be possible within a small area around the chimneys where the
6 seawater is actually warmer (Segonzac *et al.*, 1993). The putative mechanism that may allow *R.*
7 *exoculata* larvae to settle in their habitat after this hypothetical long-distance dispersal is therefore
8 not elucidated, it may be temperature-associated or based on chemical signals linked to the presence
9 of adults, as has been demonstrated for other marine invertebrates such as the oyster *Ostrea*
10 *uelchana*, where preferential settlement of spat occurs close to the adults due to a chemical stimulus
11 (Pascual & Zampatti, 1995).

12 This study makes a novel contribution to our understanding of the biogeography of the Mid-Atlantic
13 Ridge by providing new insight into the population biology and biogeographic structure of a key
14 species of shrimp from the unique, extreme and remote marine habitats of hydrothermal vents. Our
15 results indicate that, across this very remote biogeographic region, all vent populations of this shrimp
16 have a recent common history derived from a bottleneck or founder event, followed by a
17 demographic expansion toward apparently large effective population sizes. Associated with high
18 dispersal potential, such history possibly results in the absence of significant drift effects.
19 Interestingly, these results may indicate a possible common source or centre of origin of a
20 (re)colonization event at the origin of the lineages sampled from the MAR in our study. The
21 identification of such a potential source population is, unfortunately, rendered particularly difficult in
22 these ecosystems because the sampling of hydrothermal vents is necessarily as fragmented in space
23 and time as the ecosystems themselves are. Finally, more species should be studied on the MAR to
24 compare results with the more extensively studied EPR (East Pacific Rise) in order to test for the

- 1 possible influence of the shape of ridges and transform faults on the pattern of evolution and genetic
- 2 differentiation of species associated with hydrothermal vents.

3

1 **Acknowledgements**

2 The authors wish to thank Alex Canton, Rui Candeias, Olivier Mouchel, Valérie Cueff-Gauchard and
3 Stéphane L'Harridon, for technical help in the lab; Filipe Alberto for help with R; Didier Jollivet and
4 Stéphane Hourdez for interesting discussions; Jillian Petersen and Nicole Dubilier for kindly
5 providing samples from South MAR; the captain and crews of the vessels R/V *Atalante*, *Pourquoi*
6 *Pas?* and *Meteor*, and the crew of the submersible *Nautile* and ROV Victor6000; and the cruise
7 chiefs D. Desbruyers, A. Godfroy, Y. Fouquet, F. Gaill and J. Dymont for the cruises MARVEL
8 1997, EXOMAR 2005, SERPENTINE 2007, and MoMARDREAM-Naut 2007, respectively. We
9 also thank Robert Vrijenhoek and an anonymous referee for the helpful comments and suggestions
10 on this manuscript and Helen McCombie for the professional editing of this manuscript. S.T. was
11 supported by a postdoctoral fellowship from FCT, Portuguese Science Foundation and ESF
12 (European Social Fund), S.T, M-A C-B. and S.A-H were supported by Ifremer funds (DeepOases,
13 ANR project).

14

15

16

17

18

19

20

21

1 **References**

- 2 Allen, C.E., Copley, J.T.P., Tyler, P.A. & Varney, M.S. (1998) Lipid profiles of hydrothermal vent
3 shrimps. *Cahiers de Biologie Marine*, **39**, 229-231.
- 4 Audzijonyte, A. & Vrijenhoek, R.C. (2010) When gaps really are gaps: statistical phylogeography of
5 hydrothermal vent invertebrates. *Evolution*, doi: 10.1111/j.1558-5646.2010.00987.x.
- 6 Bachraty, C., Legendre, P. & Desbruyères, D. (2009) Biogeographic relationships among deep-sea
7 hydrothermal vent faunas at global scale. *Deep-Sea Research I*, **56**, 1371 -1378.
- 8 Ballard, J.W. & Whitlock, M.C. (2004) The incomplete natural history of mitochondria. *Molecular*
9 *Ecology*, **13**, 729-744.
- 10 Bandelt, H.J., Forster, P. & Röhl, A. (1999) Median-joining networks for inferring intraspecific
11 phylogenies. *Molecular Biology and Evolution*, **16**, 37–48.
- 12 Billiard, S. & Lenormand, T. (2005) Evolution of migration under kin selection and local adaptation.
13 *Evolution*, **59**, 13-23.
- 14 Brazelton, W.J., Ludwig, K.A., Sogin, M.L., Andreishcheva, E.N., Kelley, D.S., Shen, C.-C.,
15 Edwards, R.L. & Baross, J.A. (2010) Archaea and bacteria with surprising microdiversity show
16 shifts in dominance over 1,000-year time scales in hydrothermal chimneys. *Proceedings of the*
17 *National Academy of Sciences USA*, **107**, 1612-1617.
- 18 Copley, J.T.P., Tyler, P.A., Murton, B.J. & van Dover, C.L. (1997) Spatial and interannual variation
19 in the faunal distribution at Broken Spur vent field (29°N, Mid-Atlantic Ridge). *Marine Biology*, **129**,
20 723-733.
- 21 Copley, J.T.P., Jorgensen, P.B.K. & Sohn, R.A. (2007) Assessment of decadal-scale ecological
22 change at a deep Mid-Atlantic hydrothermal vent and reproductive time-series in the shrimp

- 1 *Rimicaris exoculata*. *Journal of the Marine Biological Association of the United Kingdom*, **87**, 859-
2 867.
- 3 Creasey, S., Rogers, A.D. & Tyler, P.A. (1996) Genetic comparison of two populations of the deep-
4 sea vent shrimp *Rimicaris exoculata* (Decapoda: Bresiliidae) from the Mid-Atlantic Ridge. *Marine*
5 *Biology*, **125**, 473-482.
- 6 Crow, J. (1986) *Basic concepts in population, quantitative, and evolutionary genetics*. Freeman, San
7 Francisco, CA.
- 8 Desbruyères, D., Chevaldonné, P., Alayse, A.-M., Jollivet, D., Lallier, F.H., Jouin-Toulmond, C.,
9 Zal, F., Sarradin, P.-M., Cosson, R., Caprais, J.-C., Arndt, C., O'Brien, J., Guezennec, J., Hourdez,
10 S., Riso, R., Gaill, F., Laubier, L. & Toulmond, A. (1998) Biology and ecology of the “Pompeii
11 worm” (*Alvinella pompejana* Desbruyères and Laubier), a normal dweller of an extreme deep-sea
12 environment: A synthesis of current knowledge and recent developments. *Deep-Sea Research II*, **45**,
13 383-422.
- 14 Desbruyères, D., Almeida, A., Biscoito, M., Comtet, T., Khripounoff, A., Le Bris, N., Sarradin,
15 P.M. & Segonzac, M. (2000) A review of the distribution of hydrothermal vent communities along
16 the northern Mid-Atlantic Ridge: dispersal vs. environmental controls. *Hydrobiologia*, **440**, 201-216.
- 17 Dixon, D.R. & Dixon, L.R.J. (1996) Results of DNA analyses conducted on vent shrimp postlarvae
18 collected above the Broken Spur vent field during the CD95 cruise, August 1995. *BRIDGE*
19 *Newsletter*, **11**, 9–15.
- 20 Doyle, J.J. & Doyle, J.L. (1990) Isolation of plant DNA from fresh tissue. *Focus*, **12**, 13–15.
- 21 Drummond, A.J., Ashton, B., Cheung, M., Heled, J., Kearse, M., Moir, R., Stones-Havas, S.,
22 Thierer, T. & Wilson, A. (2009) Geneious v4.7. <http://www.geneious.com/>.
- 23 Durand, L., Zbinden, M., Cuff-Gauchard, V., Duperron, S., Roussel, E.G., Shillito, B. & Cambon-
24 Bonavita, M.-A. (2010) Microbial diversity associated with the hydrothermal shrimp *Rimicaris*

- 1 *exoculata* gut and occurrence of a resident microbial community. *FEMS Microbiology and Ecology*,
2 **71**, 291-303.
- 3 Fabri, M.C., Galéron, J., Larour, M. & Maudire, G. (2006) Combining the Biocean database for
4 deep-sea benthic data with the online Ocean Biogeographic Information System. *Marine Ecology*
5 *Progress Series*, **316**, 215-224.
- 6 Faure, B., Jollivet, D., Tanguy, A., Bonhomme, F. & Bierne, N. (2009) Speciation in the deep sea:
7 multi-locus analysis of divergence and gene flow between two hybridizing species of hydrothermal
8 vent mussels. *PLoS ONE* **4**(8), e6485. doi:10.1371/journal.pone.0006485.
- 9 Folmer, O., Hoeh, W.R., Black, M.B. & Vrijenhoek, R.C. (1994) Conserved primers for PCR
10 amplification of mitochondrial DNA from different invertebrate phyla. *Molecular Marine Biology*
11 *and Biotechnology*, **3**, 294-299.
- 12 Fu, Y.X. (1996) New statistical tests of neutrality for DNA samples from a population. *Genetics*,
13 **143**, 557-570.
- 14 Fu, Y.X. (1997) Statistical tests of neutrality of mutations against population growth, hitchhiking and
15 background selection. *Genetics*, **147**, 915-925.
- 16 Galtier, N., Nabholz, B., Glémin, S. & Hurst, G.D.D. (2009) Mitochondrial DNA as a marker of
17 molecular diversity: a reappraisal. *Molecular Ecology*, **18**, 4541-4550.
- 18 Garant, D., Forde, S.E. & Hendry, A.P. (2007) The multifarious effects of dispersal and gene flow on
19 contemporary adaptation. *Functional Ecology*, **21**, 434-443.
- 20 Hamilton, W.D. & May, R.M. (1977) Dispersal in stable habitats. *Nature*, **269**, 578-581.
- 21 Herring, P.J., Gaten, E., & Sheldon, P.M.J. (1999) Are vent shrimps blinded by science? *Nature*,
22 **398**, 116.

- 1 Hessler, R.R., Smithey, W.M., Boudrias, M.A., Keller, C.H., Lutz, R.A. & Childress, J.J. (1988)
2 Temporal change in megafauna at the rose garden hydrothermal vent (Galapagos Rift; eastern
3 tropical Pacific). *Deep-Sea Research*, **35**, 1681-1709.
- 4 Hudson, R.R., Slatkin, M. & Maddison, W.P. (1992) Estimation of levels of gene flow from DNA-
5 sequence data. *Genetics*, **132**, 583–589.
- 6 Hurtado, L., Lutz, R. & Vrijenhoek, R. (2004) Distinct patterns of genetic differentiation among
7 annelids of eastern Pacific hydrothermal vents. *Molecular Ecology*, **13**, 2603–2615.
- 8 Ims, R.A. & Andreassen, H.P. (2000) Spatial synchronization of vole population dynamics by
9 predatory birds. *Nature*, **408**, 194-196.
- 10 Johnson, S.B., Young, C.R., Jones, W.J., Waren, A. & Vrijenhoek, R.C. (2006) Migration, isolation,
11 and speciation of hydrothermal vent limpets (Gastropoda; Lepetodrilidae) across the Blanco
12 transform fault. *The Biological Bulletin*, **210**, 140–157.
- 13 Jollivet, D. (1996) Specific and genetic diversity at deep-sea hydrothermal vents: an overview.
14 *Biodiversity and Conservation*, **5**, 1619-1653.
- 15 Jollivet, D., Chevaldonné, P. & Planque, B. (1999) Hydrothermal-vent alvinellid polychaete
16 dispersal in the eastern Pacific. 2. A metapopulation model based on habitat shifts. *Evolution*, **53**,
17 1128–1142.
- 18 Kumar, M. & Shukla, P.K. (2005) Use of PCR targeting of internal transcribed spacer regions and
19 single-stranded conformation polymorphism analysis of sequence variation in different regions of
20 rRNA genes in fungi for rapid diagnosis of mycotic keratitis. *Journal of Clinical Microbiology*, **43**,
21 662-668.
- 22 Lalou, C., Reyss, J-L., Bricchet, E., Arnold, M., Thompson, G., Fouquet, Y. & Rona, P.A. (1993)
23 New age data for Mid-Atlantic Ridge hydrothermal sites: TAG and Snakepit chronology revisited.
24 *Journal of Geophysical Research*, **98**, 9705-9713.

- 1 Llodra, E.R., Tyler, P.A. & Copley, J.T.P. (2000) Reproductive biology of three caridean shrimp,
2 *Rimicaris exoculata*, *Chorocaris chacei* and *Mirocaris fortunata* (Caridea: Decapoda), from
3 hydrothermal vents. *Journal of the Marine Biological Association of the United Kingdom*, **80**, 473-
4 484.
- 5 López-García, P., Philippe, H., Gail, F. & Moreira, D. (2003) Autochthonous eukaryotic diversity in
6 hydrothermal sediment and experimental microcolonizers at the Mid-Atlantic Ridge. *Proceedings of*
7 *the National Academy of Sciences USA*, **100**, 697–702.
- 8 Matabos, M., Thiébaud, E., Le Guen, D., Sadosky, F., Jollivet, D. & Bonhomme, F. (2008)
9 Geographic clines and stepping-stone patterns detected along the East Pacific Rise in the
10 vetigastropod *Lepetodrilus elevatus* reflect species crypticism. *Marine Biology* **153**, 545-563.
- 11 Nei, M. (1987) *Molecular evolutionary genetics*. Columbia University Press, New York.
- 12 Olivieri, I., Michalakis, Y. & Gouyon, P.H. (1995) Metapopulation genetics and the evolution of
13 dispersal. *The American Naturalist*, **146**, 202-228.
- 14 O'Connor, M.I., Bruno, J.F., Gaines, S.D., Halpern, B.S., Lester, S.E., Kinlan, B.P. & Weiss, J.M.
15 (2007) Temperature control of larval dispersal and the implications for marine ecology, evolution,
16 and conservation. *Proceedings of the National Academy of Sciences USA*, **104**, 1266-1271.
- 17 O'Mullan, G.D., Maas, P.A.Y., Lutz, R.A. & Vrijenhoek, R.C. (2001) A hybrid zone between
18 hydrothermal vent mussels (Bivalvia: Mytilidae) from the Mid-Atlantic Ridge. *Molecular Ecology*,
19 **10**, 2819-2831.
- 20 Pascual, M.S. & Zampatti, E.A. (1995) Evidence of a chemically mediated adult-larval interaction
21 triggering settlement in *Ostrea puelchana*: applications in hatchery production. *Aquaculture*, **133**,
22 33-44.
- 23 Petersen, J.M., Ramette, A., Lott, C., Cambon-Bonavita, M.-A., Zbinden, M. & Dubilier, N. (2009)
24 Dual symbiosis of the vent shrimp *Rimicaris exoculata* with filamentous gamma- and

- 1 epsilonproteobacteria at four Mid-Atlantic Ridge hydrothermal vent fields. *Environmental*
2 *Microbiology*, doi:10.1111/j.1462-2920.2009.02129.x
- 3 Pond, D., Dixon, D. & Sargent, J. (1997) Wax-ester reserves facilitate dispersal of hydrothermal vent
4 shrimps. *Marine Ecology Progress Series*, **146**, 289-290.
- 5 Plouviez, S., Shank, T.M., Faure, B., Daguin-Thiébaud, C., Viard, F., Lallier, F.H. & Jollivet, D.
6 (2009) Comparative phylogeography among hydrothermal vent species along the East Pacific Rise
7 reveals vicariant processes and population expansion in the South. *Molecular Ecology*, **18**, 3903-
8 3917.
- 9 Ramos-Onsins, S.E. & Rozas, J. (2002) Statistical properties of new neutrality tests against
10 population growth. *Molecular Biology and Evolution*, **19**, 2092-2100.
- 11 Ray, N., Currat, M. & Excoffier, L. (2003) Intra-deme molecular diversity in spatially expanding
12 populations. *Molecular Biology and Evolution*, **20**, 76–86.
- 13 Raymond, M. & Rousset, F. (1995) Genepop (version 3.2): population genetics software for exact
14 tests and ecumenicism. *Journal of Heredity*, **86**, 248–249.
- 15 Rona, P.A., Klinkhammer, G., Nelsen, T.A., Trefry, J.H. & Elderfield, H. (1986) Black smokers,
16 massive sulphides and vent biota at the Mid-Atlantic Ridge. *Nature*, **321**, 33-37.
- 17 Ronce, O. & Olivieri, I. (2004) Life history evolution in metapopulations. *Ecology, genetics, and*
18 *evolution of metapopulations* (ed. by I. Hanski and O.E. Gaggiotti), pp. 227- 258. Amsterdam
19 Academic, Amsterdam.
- 20 Rozas, J., Sánchez-DelBarrio, J.C., Messeguer, X. & Rozas, R. (2003) DnaSP, DNA polymorphism
21 analyses by the coalescent and other methods. *Bioinformatics*, **19**, 2496–2497.

- 1 Schneider, S., Roessli, D. & Excoffier, L. (2000) *Arlequin (V2.0): Software for population genetics*
2 *data analysis*. Genetics and biometry laboratory, Department of Anthropology, University of
3 Geneva, Geneva.
- 4 Segonzac, M., DeSaintLaurent, M. & Casanova, B. (1993) Enigma of the trophic adaptation of the
5 shrimp Alvinocarididae in hydrothermal areas along the Mid-Atlantic Ridge. *Cahiers de Biologie*
6 *Marine*, **34**, 535-571.
- 7 Shank, T.M., Lutz, R.A. & Vrijenhoek, R.C. (1998b) Molecular systematic of shrimp (Decapoda:
8 Bresiliidae) from deep-sea hydrothermal vents, I: Enigmatic “small orange” shrimp from the Mid-
9 Atlantic Ridge are juvenile *Rimicaris exoculata*. *Molecular Marine Biology and Biotechnology*, **7**,
10 88-96.
- 11 Shank, T.M., Fornari, D.J., Von Damm, K.L., Lilley, M.D., Haymon, R.M. & Lutz, R.A. (1998a)
12 Temporal and spatial patterns of biological community development at nascent deep-sea
13 hydrothermal vents (9°50'N, East Pacific Rise). *Deep-Sea Research II*, **45**, 465-515.
- 14 Tajima, F. (1983) Evolutionary relationships of DNA sequences in finite populations. *Genetics*, **105**,
15 437-460
- 16 Tajima, F. (1989) Statistical-method for testing the neutral mutation hypothesis by DNA
17 polymorphism. *Genetics*, **123**, 585-595.
- 18 Tajima, F. (1996) The amount of DNA polymorphism maintained in a finite population when the
19 neutral mutation rate varies among sites. *Genetics*, **143**, 1457-1465.
- 20 Tunnicliffe, V. (1991) The biology of hydrothermal vents: ecology and evolution. *Oceanography*
21 *and Marine Biology: Annual Review*, **29**, 319-407.
- 22 Tunnicliffe, V. & Fowler, M.R. (1996) Influence of sea-floor spreading on the global hydrothermal
23 vent fauna. *Nature*, **379**, 531-533.

- 1 Tyler, P.A. & Young, C.M. (1999) Reproduction and dispersal at vents and cold seeps. *Journal of*
2 *the Marine Biological Association of the United Kingdom*, **79**, 193-208.
- 3 Van Dover, C.L. (1995) Ecology of Mid-Atlantic Ridge hydrothermal vents. *Hydrothermal vents and*
4 *processes* (ed by L.M. Parson, C.L. Walker and D.R. Dixon), pp. 257-294. Geological Society,
5 London.
- 6 Van Dover, C.L. (2000) *The Ecology of Deep-Sea Hydrothermal Vents*. Princeton University Press,
7 Princeton.
- 8 Van Dover, C.L., Szuts, E.Z., Chamberlain, S.C. & Cann, J.R. (1989) A novel eye in 'eyeless'
9 shrimp from hydrothermal vents of the Mid-Atlantic Ridge. *Nature*, **337**, 458-460.
- 10 Van Dover, C.L., German, C.R., Speer, K.G., Parson, L.M. & Vrijenhoek, R.C. (2002) Evolution
11 and biogeography of deep-sea vent and seep invertebrates. *Science*, **295**, 1253-1257.
- 12 Vrijenhoek, R.C. (1997) Gene flow and genetic diversity in naturally fragmented metapopulations of
13 deep-sea hydrothermal vent animals. *Journal of Heredity*, **88**, 285-293.
- 14 Williams, A.B. & Rona, P.A. (1986) Two new caridean shrimps (Bresiliidae) from a hydrothermal
15 vent field on the Mid-Atlantic Ridge. *Journal of Crustacean Biology*, **6**, 446-462.
- 16 Won, Y., Young, C.R., Lutz, R.A. & Vrijenhoek, R.C. (2003) Dispersal barriers and isolation among
17 deep-sea mussel populations (Mytilidae: *Bathymodiolus*) from eastern Pacific hydrothermal vents.
18 *Molecular Ecology*, **12**, 169-184.
- 19 Young, C.R., Fujio, S. & Vrijenhoek, R.C. (2008) Directional dispersal between mid-ocean ridges:
20 deep-ocean circulation and gene flow in *Ridgeia piscesae*. *Molecular Ecology*, **17**, 1718-1731.

21

22 **Supporting information**

1 Additional Supporting Information may be found in the online version of this article:

2

3 **Appendix S1** Neighbour-joining phylogram constructed with 152 COI mitochondrial sequences of
4 *Rimicaris exoculata*

5

6 As a service to our authors and readers, this journal provides supporting information supplied by the
7 authors. Such materials are peer-reviewed and may be re-organized for online delivery, but are not
8 copy-edited or typeset. Technical support issues arising from supporting information (other than
9 missing files) should be addressed to the authors.

10

11

12 **Biosketches**

13 The researchers involved in this study have a long-standing interest in Biogeography, Ecology and
14 Evolution of marine organisms and especially deep-sea hydrothermal vent communities (D.D.) and
15 their symbiotic relationships (M.A-C.B). Author contributions: S.A-H. and D.D. conceived the ideas;
16 M-A.C-B. collected most of the samples, S.T. collected the data; S.T., S.A.-H. and E.S. analysed the
17 data; and all authors contributed to the writing.

18 Editor: Craig McClain

19

1 **Tables**

2 **Table 1.** Geographic coordinates, depth and cruise details for the populations of organisms sampled
 3 along the Mid-Atlantic Ridge.

Population	Year	GPS coordinates	Depth	Cruise
Rainbow	2007	036°08'44''N; 034°00'02''W	2200 m	MoMAR; ROV Victor6000; RV Pourquoi pas?
TAG	2005	26°02'34''N; 044°54'00''W	3650 m	EXOMAR; ROV Victor6000; RV L'Atalante
Logatchev (Irina2)	2007	14°44'62''N; 046°35'59''W	2860 m	SERPENTINE; ROV Victor6000; RV Pourquoi pas?
Ashadzé (SE1)	2007	12°50'71''N; 044°54'47''W	3200 m	SERPENTINE; ROV Victor6000; RV Pourquoi pas?
SouthMAR	2006	4°47'S; 12°22'W	3048 m	M64/1; ROV Meteor/Quest

4

5

1 **Table 2.** Genetic diversity indices calculated for each sampled population and year, of the deep-sea
 2 shrimp *Rimicaris exoculata* sampled along the Mid-Atlantic Ridge. (*n*) sample size; (*Nh*) number of
 3 haplotypes; (*Nph*) number of private haplotypes, i.e. the number of haplotypes that only appeared in
 4 one population; (*k*) number of polymorphic sites; (*h*) haplotype diversity; (π_1) mean number of
 5 pairwise differences; (π_2) nucleotide diversity. Neutrality and population expansion tests: *D*=
 6 Tajima's D-test; F_S = Fu's F_S test. All values obtained for the neutrality tests were significant at the 5
 7 % level.

Population	Year	<i>n</i>	<i>k</i>	<i>Nh</i>	<i>h</i>	π_1	π_2	<i>D</i>	F_S	<i>Nph</i>
Rainbow	2007	26	18	14	0.82±0.07	1.67	0.0033	-2.292(0.002)	-11.01(0)	3
	1997	32	14	14	0.69±0.09	1.05	0.0021	-2.298(0.001)	-13.87(0)	7
Logatchev	2007	31	20	16	0.77±0.08	1.41	0.0028	-2.487(0)	-15.38(0)	8
	2006	12	9	7	0.77±0.13	1.50	0.0030	-2.016(0.004)	-3.52(0.003)	3
	2005	13	8	8	0.81±0.11	1.36	0.0027	-1.831(0.012)	-5.25(0)	3
TAG	2005	31	16	16	0.77±0.08	1.09	0.0022	-2.454(0)	-18.32(0)	6
Ashadzé	2007	3	0	1	0	0	0	0	0	0
SouthMAR	2006	4	3	4	1.00±0.18	1.50	0.0030	-0.754(0.23)	-2.37(0.008)	0

8

9

10

11

1 **Table 3.** Genetic diversity indices for the temporal samples of the population of *Rimicaris exoculata*
 2 from Logatchev. Diversity indices for the sampling years of 2005 and 2007 are given as averages
 3 (\pm SD) due to the random re-sampling (100 times) to a minimum common size of 12 individuals per
 4 population. (N_h) number of haplotypes; (k) number of polymorphic sites; (h) haplotype diversity;
 5 (π_2) nucleotide diversity.

Year	N_h	k	h	π_2
2005	5.26 \pm 1.1	5.1 \pm 1.46	0.74 \pm 0.12	0.0024
2006	7	9	0.77 \pm 0.13	0.0030
2007	5.9 \pm 1.51	6.78 \pm 2.25	0.73 \pm 0.15	0.0026

6

7

8

9

10

11

12

13

14

15

1 **Table 4.** Pairwise F_{ST} values based on haplotype frequencies obtained for the species *Rimicaris*
 2 *exoculata* sampled along the Mid-Atlantic Ridge. None of the F_{ST} values were significant at the 5 %
 3 level.

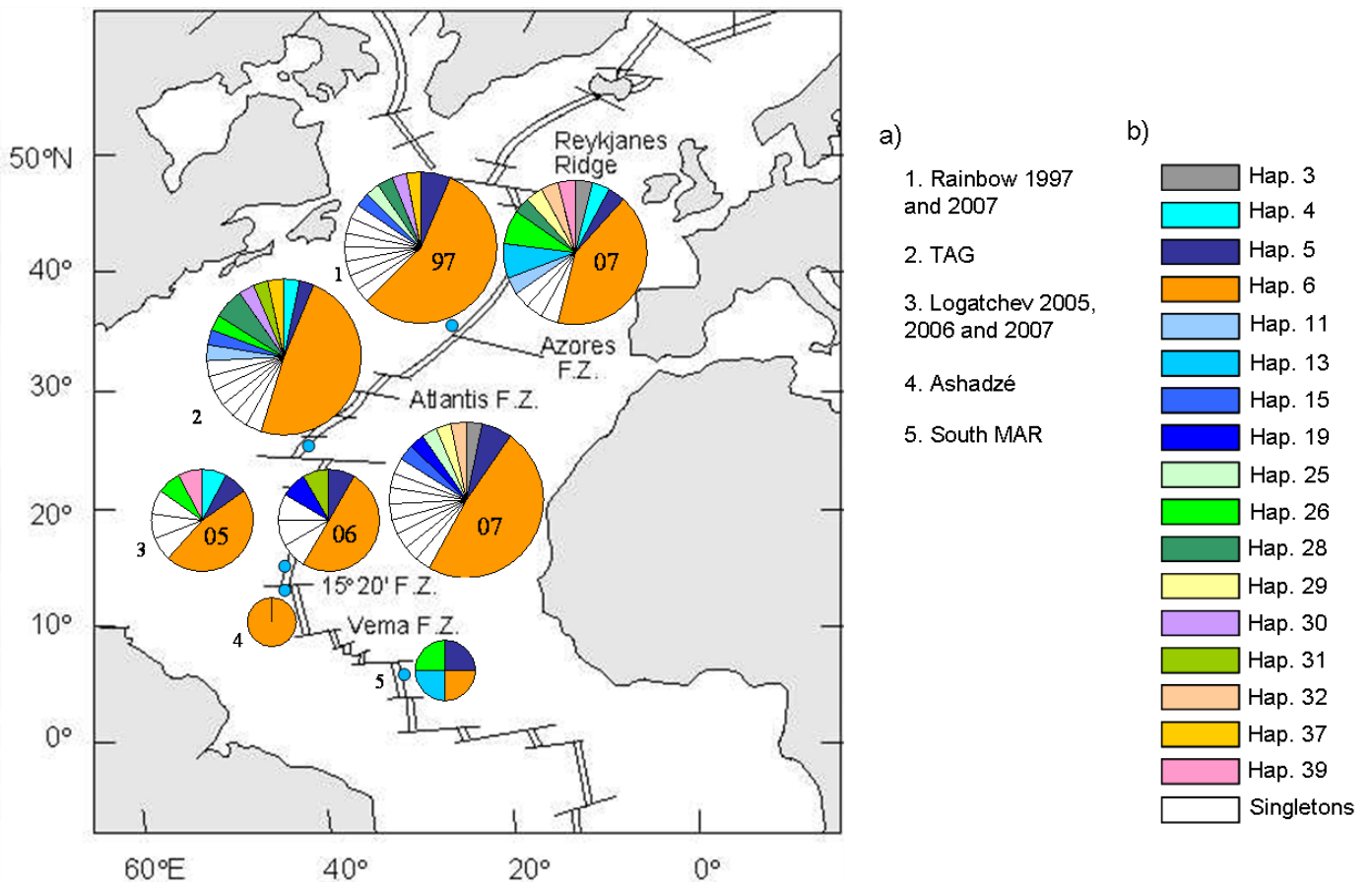
Pops	Rainbow 07	Rainbow 97	Logatchev 07	Logatchev 06	Logatchev 05	TAG	Ashadzé	South MAR
Rainbow07								
Rainbow97	0.00245							
Logatchev07	-0.0115	-0.01243						
Logatchev06	-0.0184	-0.0221	-0.0298					
Logatchev05	-0.0335	-0.0144	-0.0227	-0.0360				
TAG	-0.0147	-0.0138	-0.0122	-0.0262	-0.0260			
Ashadzé	0.0480	-0.0230	0.0140	0.0145	0.0331	0.014 0		
South MAR	-0.0589	0.0452	0.0031	-0.0147	-0.0495	0.003 1	0.250	

4

5

1 Figures

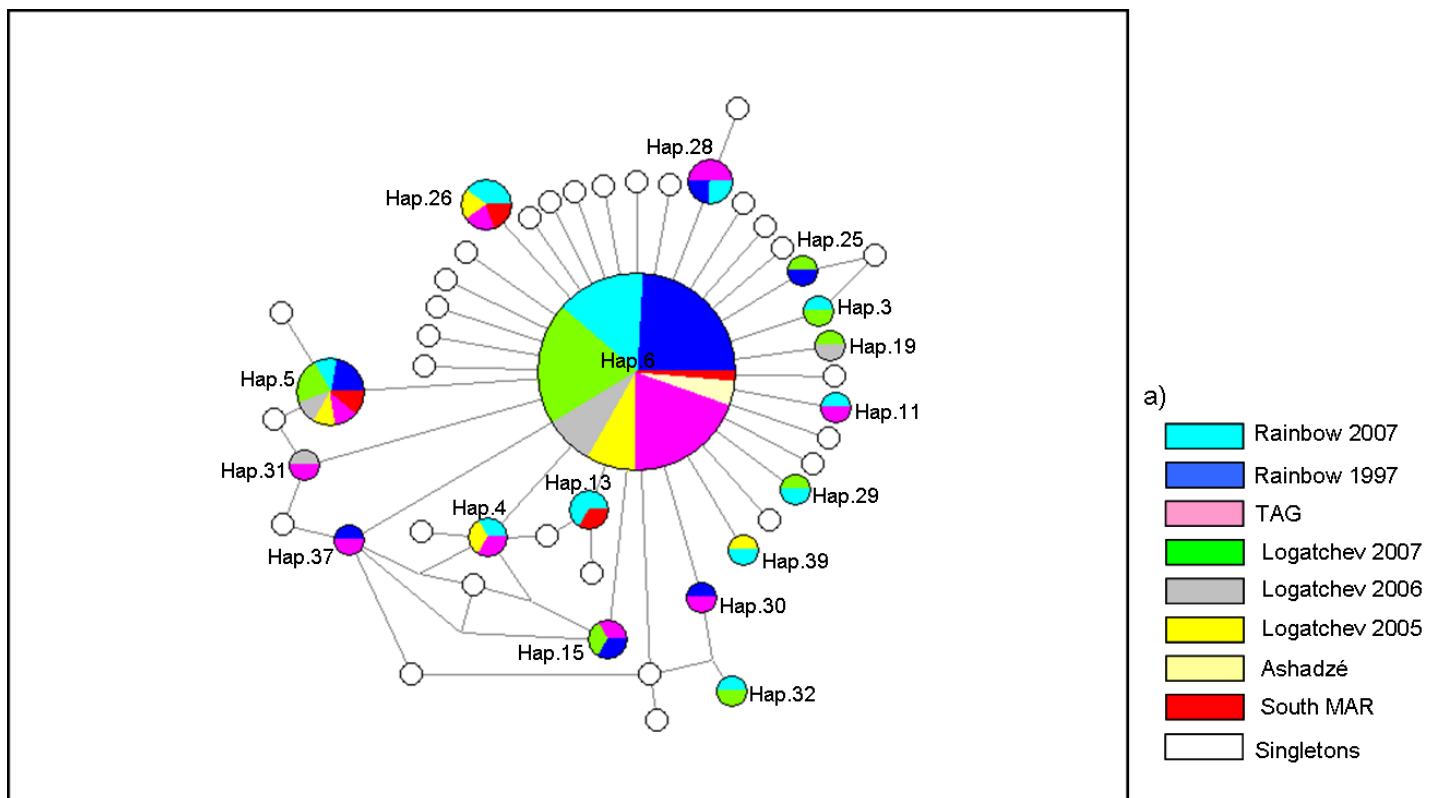
2 **Figure 1.** Location of the *Rimicaris exoculata* populations sampled along the Mid-Atlantic Ridge,
 3 and the respective mtDNA haplotype distribution (pie charts) per population. The size of the pie
 4 charts is proportional to the number of individuals sampled from each population, and each colour in
 5 the pie charts represents a different haplotype; the singletons (haplotypes that appear only once in
 6 one population) are coded as white, the same haplotype found in different populations is represented,
 7 by the same colour in the corresponding pie charts. a) Key of the locations analysed along the MAR;
 8 b) colour key for the haplotypes found.



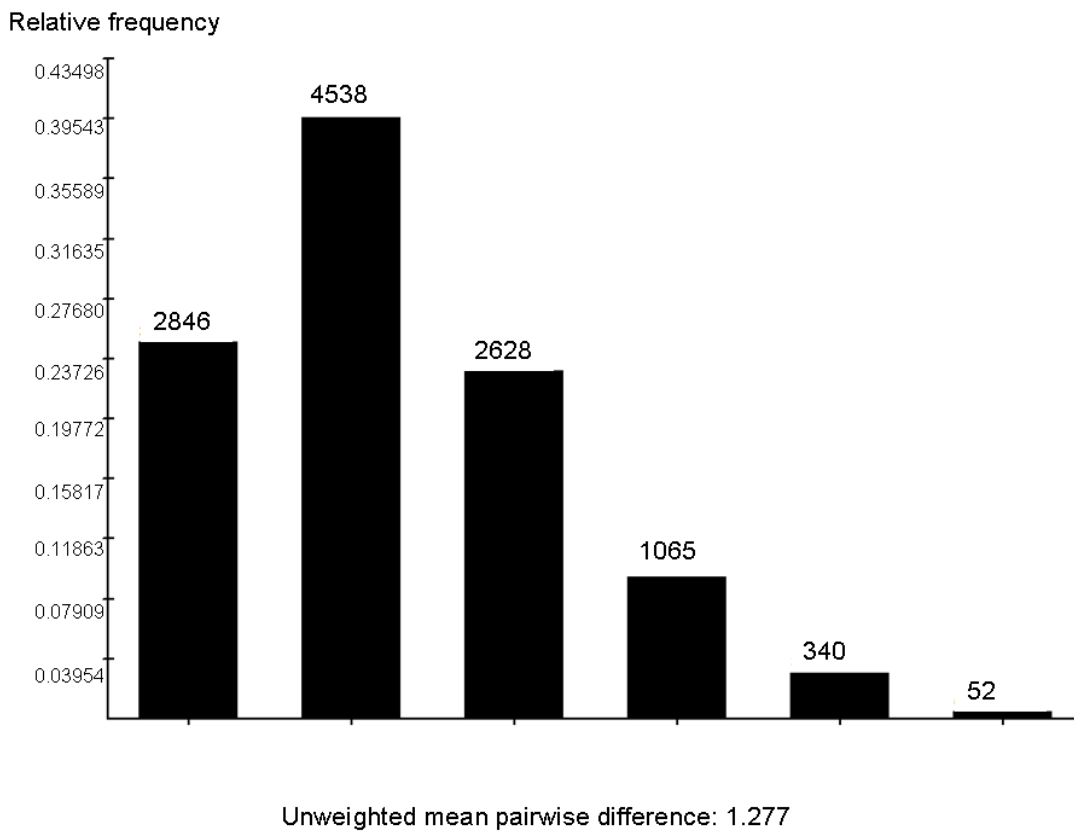
9

10

1 **Figure 2.** Haplotype network of the obtained mtDNA haplotypes of *Rimicaris exoculata* sampled
 2 along the Mid-Atlantic Ridge. Each circle represents a different haplotype, with the size of each
 3 circle proportional to the number of individuals displaying that particular haplotype. The white
 4 circles represent singletons (haplotypes that occur only once, represented by a single individual), the
 5 haplotypes found in more than one individual are identified and represented by pie charts, the colours
 6 used represent the locations where that haplotype was found. Segment size is proportional to the
 7 relative frequency of a haplotype in each population where it is present. a) Colour key to the
 8 locations where each haplotype was present.



- 1 **Figure 3.** Mismatch distribution of nucleotide pairwise differences for all the mitochondrial COI
2 sequences analysed (152) for *Rimicaris exoculata* sampled along the Mid-Atlantic Ridge.

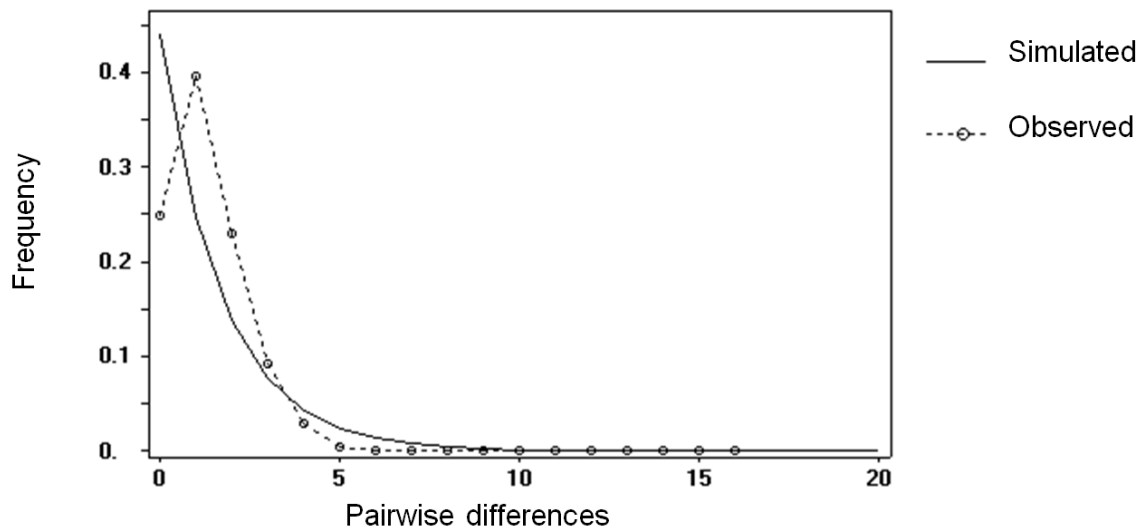


3

4

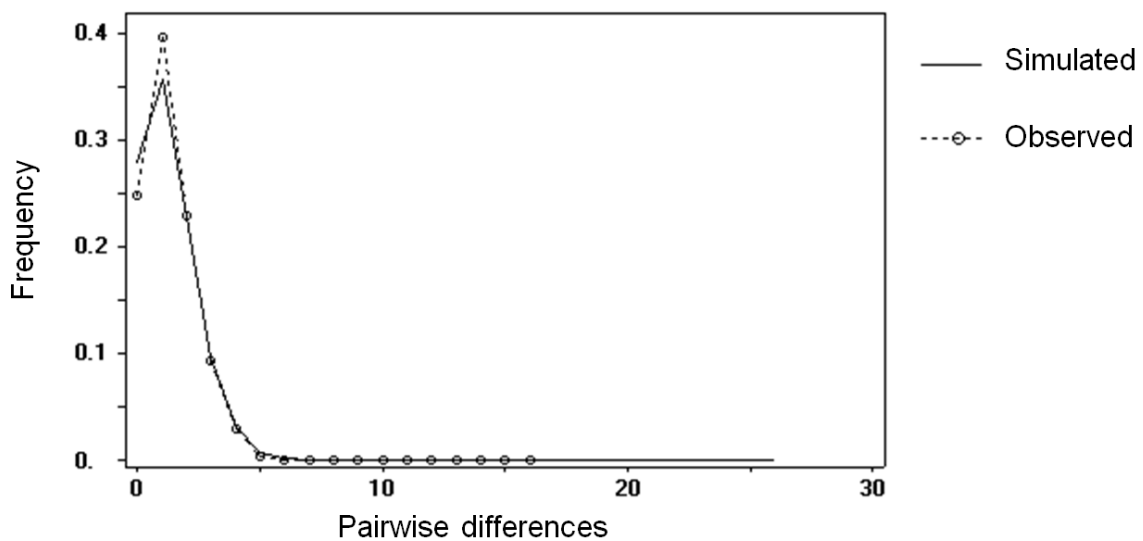
1 **Figure 4.** Observed and simulated mismatch curves of nucleotide pairwise differences of
2 mitochondrial COI sequences of *Rimicaris exoculata* sampled along the Mid-Atlantic Ridge. The
3 graphs represent a comparison of the observed curve of nucleotide pairwise differences to (a) a
4 simulated curve assuming constant population size and (b) to a simulated curve assuming a
5 population growth/decline model.

a)



6

b)



7

8

1 **Supporting information**

2 **Fig. S1.** Neighbour-joining phylogram constructed under the HKY mutation model with 152 COI
3 mitochondrial sequences of *Rimicaris exoculata*. The outgroup used was the bresiliid shrimp
4 *Alvinocaris* sp. All bootstrap values are shown. a) Colour key to the geographic location where the
5 sequences were present.

